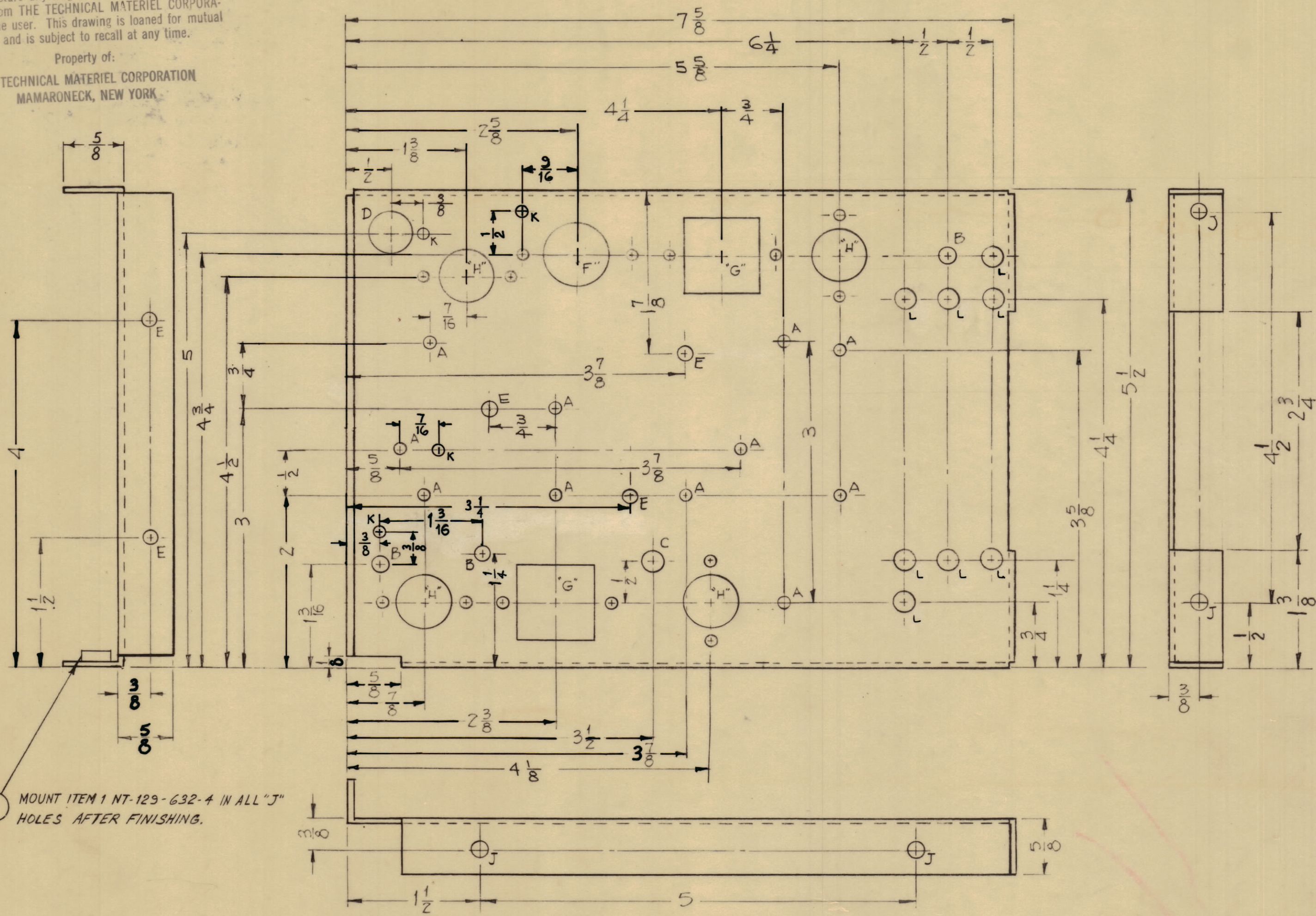


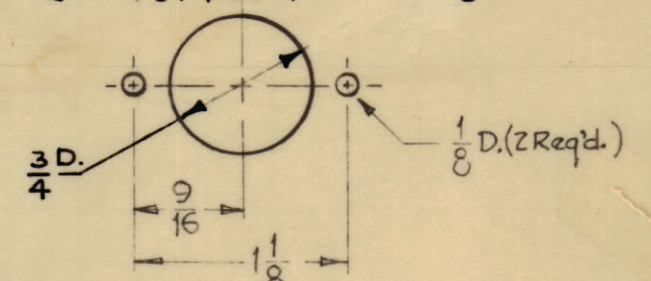
NOTICE TO PERSONS RECEIVING THIS DRAWING

THE TECHNICAL MATERIEL CORPORATION claims proprietary right in the material disclosed herein. This drawing is issued in confidence for engineering information only and may not be reproduced or used to manufacture anything shown herein without permission from THE TECHNICAL MATERIEL CORPORATION to the user. This drawing is loaned for mutual assistance and is subject to recall at any time.

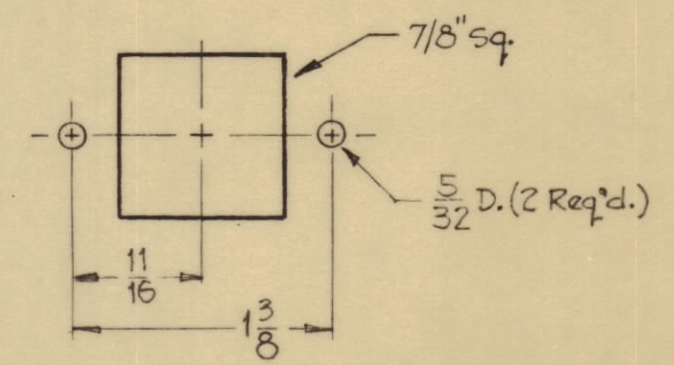
Property of:
THE TECHNICAL MATERIEL CORPORATION
MAMARONECK, NEW YORK



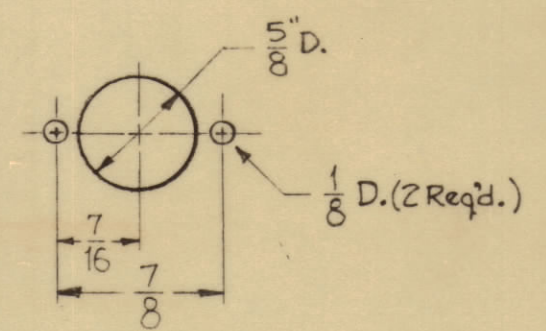
HOLES	REQ'D.
A ~ 9/64" Dia	7
B ~ 3/16" "	3
C ~ 1/4" "	1
D ~ 1/2" "	1
E ~ 11/64" "	5
J ~ .191-.194 D	6
K - 1/8 DIA	4
L - 13/64 (.203)	8



"F" DETAIL
1 REQ.



"G" DETAIL
2 REQ.



"H" DETAIL
4 REQ.

NOTE:
USE MATERIAL THICKNESS FOR MAX. RADIUS ON ALL BENDS UNLESS OTHERWISE SPECIFIED.

1 MOUNT ITEM 1 NT-129-632-4 IN ALL "J" HOLES AFTER FINISHING.

HOLE PATTERN SAME ON OPPOSITE SIDE

REF: LD-929 (4)

REQ. ITEM	PART NO.	DESCRIPTION	SYMBOL
6	1	NT-129-632-4 NUT, ROUND, SWAGE TYPE	
		.062 THK.	
		STOCK SIZE	
		ALUMINUM	
		MATERIAL	
		5052-H32	
		TYPE & TEMPER	
		HEAT TREAT. SPEC.	
		5-404 IRIDITE	
		FINISH & SPEC. NO.	

THE TECHNICAL MATERIEL CORP.	NEW YORK
MAMARONECK, NEW YORK	
CHASSIS, SYNTHESIZER	
W. A. F.	J. D.
DRAWN	ELEC. DES. APP.
CHECKED	MECH. DES. APP.
FINAL APPROVAL	
MS-2592 A	

ISSUE	ZONE	DESCRIPTION	DATE	CH. NO.	DRAFTS	CHECKER	ENG. APP.
A	P,F,4	8" C-HOLES CHANGED TO "L"-HOLES	1.21.65	13327	ASB		

TOLERANCES

SCALE: FULL (DO NOT SCALE)

DEC. DIM. ±
FRAC. DIM. ± .004
ANGULAR DIM. ±

MAXIMUM ALLOWABLE TOLERANCES HAVE BEEN DETERMINED AND ANY DEVIATIONS WILL BE CAUSE FOR REJECTION. REMOVE ALL BURRS AND SHARP EDGES

REQ PER UNIT	MODEL	SECTION	ASSY. NO.	DATE
1	CHG-2	SYNTH.		5-29-61