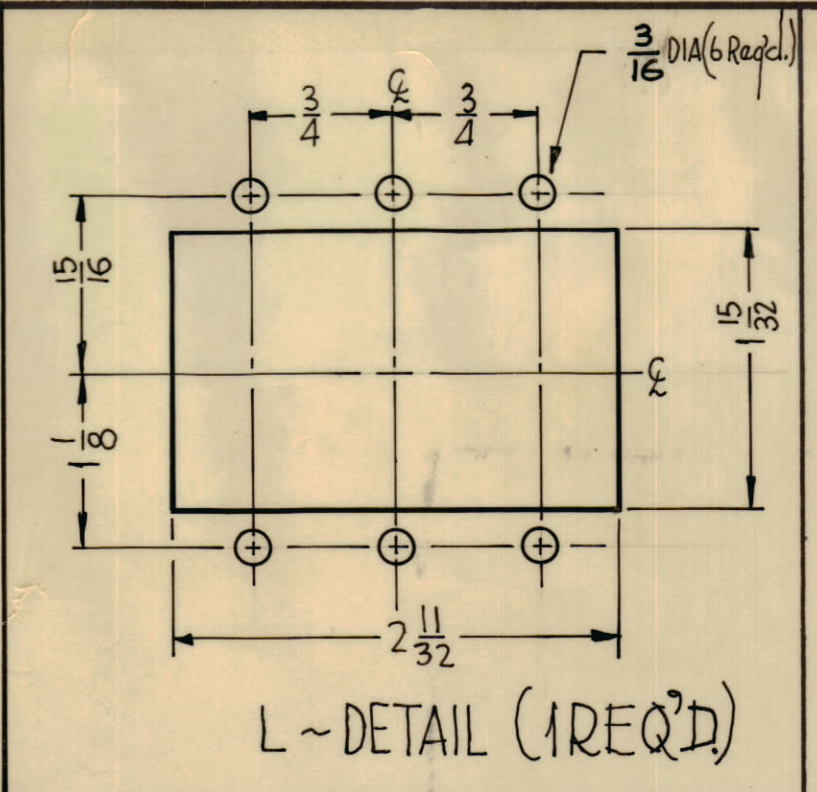
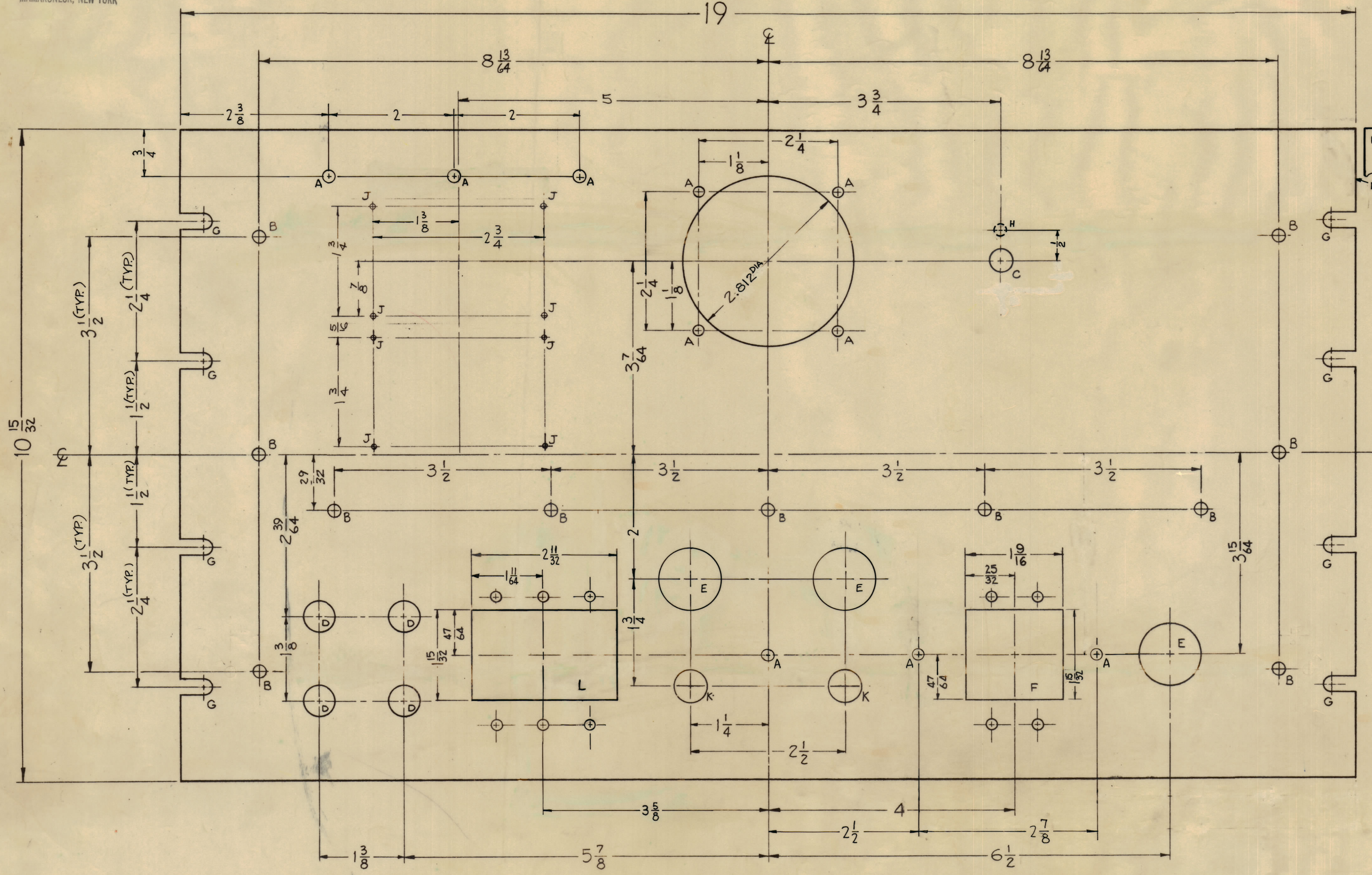


IF IT IS FOUND DESIRABLE TO CHANGE ANY TOLERANCE OR OTHER DETAIL SPECIFIED ON THIS DRAWING NOTIFY THE PURCHASER PROMPTLY.
 MAXIMUM ALLOWABLE TOLERANCES HAVE BEEN DETERMINED AND DEVIATIONS WILL BE CAUSE FOR REJECTION.
 REMOVE ALL BURRS AND SHARP EDGES

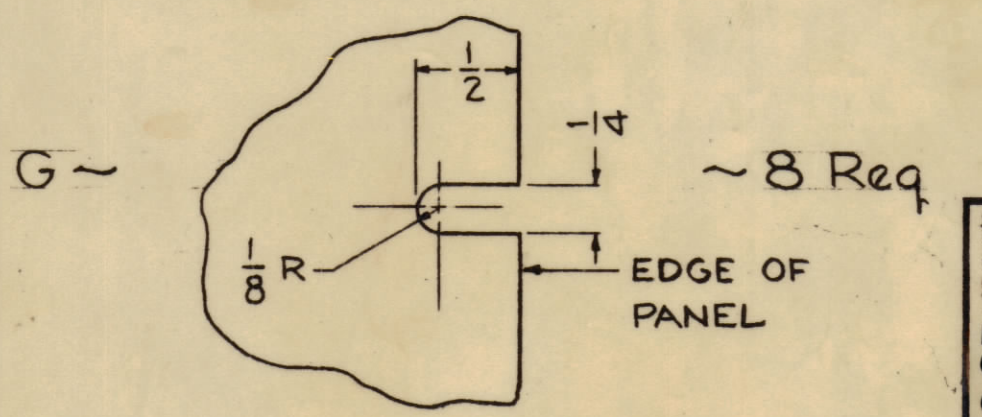
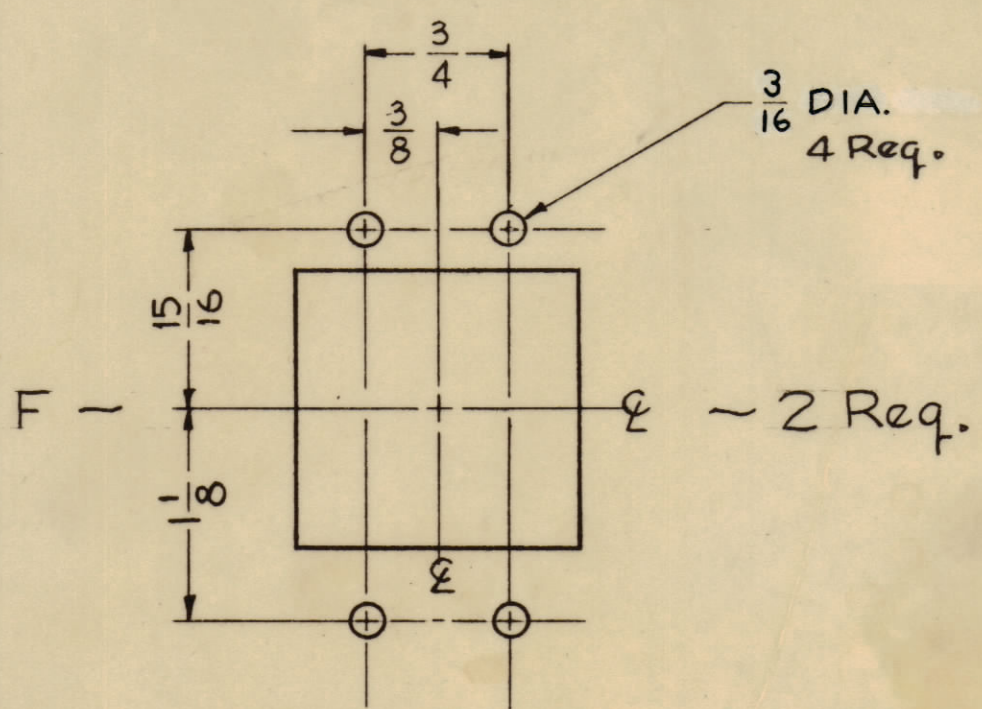
NOTICE TO PERSONS RECEIVING THIS DRAWING

THE TECHNICAL MATERIEL CORPORATION claims proprietary right in the material disclosed hereon. This drawing is issued in confidence for engineering information only and may not be reproduced or used to manufacture anything shown hereon without permission from THE TECHNICAL MATERIEL CORPORATION to the user. This drawing is loaned for mutual assistance and is subject to recall at any time.

Property of:
 THE TECHNICAL MATERIEL CORPORATION
 MAMARONECK, NEW YORK



- A ~ 11/64 (.171) DIA. 10 Req.
- B ~ 13/64 (.203) DIA. 11 Req.
- C ~ 25/64 (.390) DIA. 1 Req.
- D ~ 1/2 (.500) DIA. 4 Req.
- E ~ 1" (1.000) DIA. 3 Req.
- H ~ #7 DRILL (.201) DIA HOLE, 1/8 DEEP FROM REAR OF PANEL.



MS-2601-D
 METAL STAMP TMC PART NO. 1/8" HIGH
 GOTHIC ON REAR OF PANEL AS SHOWN ON DETAIL, WITH LATEST REVISION LETTER.

- J ~ #47 DRILL 8 REQ.
- K ~ 17/32 DIA. 2 REQ.

NOTES

FINISH
 S404 YELLOW IRIDITE
 S114 ~ ZINC CHROMATE PRIMER
 S115 ~ TMC SMOOTH GREY ENAMEL OR PRIME & PAINT TO CUST. SPEC.
 FRONT & EDGES ONLY.

MACHINING
 1 ~ LATERAL BOW OF PANEL MUST BE KEPT TO .031 TOLERANCE.
 2 ~ MILL ALL EDGES.
 3 ~ HOLES MUST BE DRILLED.
 4 ~ PANEL MUST BE FREE OF ALL MACHINING MARKS, GOUGES, AND SCRATCHES. IF NECESSARY SAND FRONT OF PANEL WITH NO. 120 GRIT SANDPAPER.

D	1	ON PICTORIAL DIM. 2.812 DIA. 2 3/4 DIA.	3-4-65	13606	GDL		
C	2	H WAS 3/16 (187) DIA. H HOLE RELOCATED	11-4-64	12865	LB		
B	1	DEL 2 "A" HOLES	3-19-64	11058	AM		
A	1	3/16 DIA. HOLES WERE 1/16 DIA. ON L & F DETAILS	1-3-61	5800	AA		

TOLERANCES
 ALL DEC. DIM. 1/64
 OTHERS ANGULAR DIM. 1/64
 SCALE: DRILL, PUNCH, COMMERCIAL STOCK SIZES AND MANUFACTURERS TOLERANCES ARE NOT INCLUDED.

1	PS-4A	PAL-1KA	6-1-61
REQ. PER UNIT	MODEL	PROJECT NO.	DATE
		ASSY. NO.	USED ON

REF-TMC DWG NO. 8LD-942	
REQ. ITEM	PART NO.
3/16 THICK	THE TECHNICAL MATERIEL CORP.
STOCK SIZE	MAMARONECK, NEW YORK
ALUMINUM	PANEL, FRONT
MATERIAL	WEIGHT PER PC.
2024-T3	PS-4A
TYPE & TEMPER	D.D. Mam
HEAT TREAT. SPEC.	PK
SEE FINISH NOTE	FINAL APPROVAL
FINISH & SPEC. NO.	MS-2601 D