

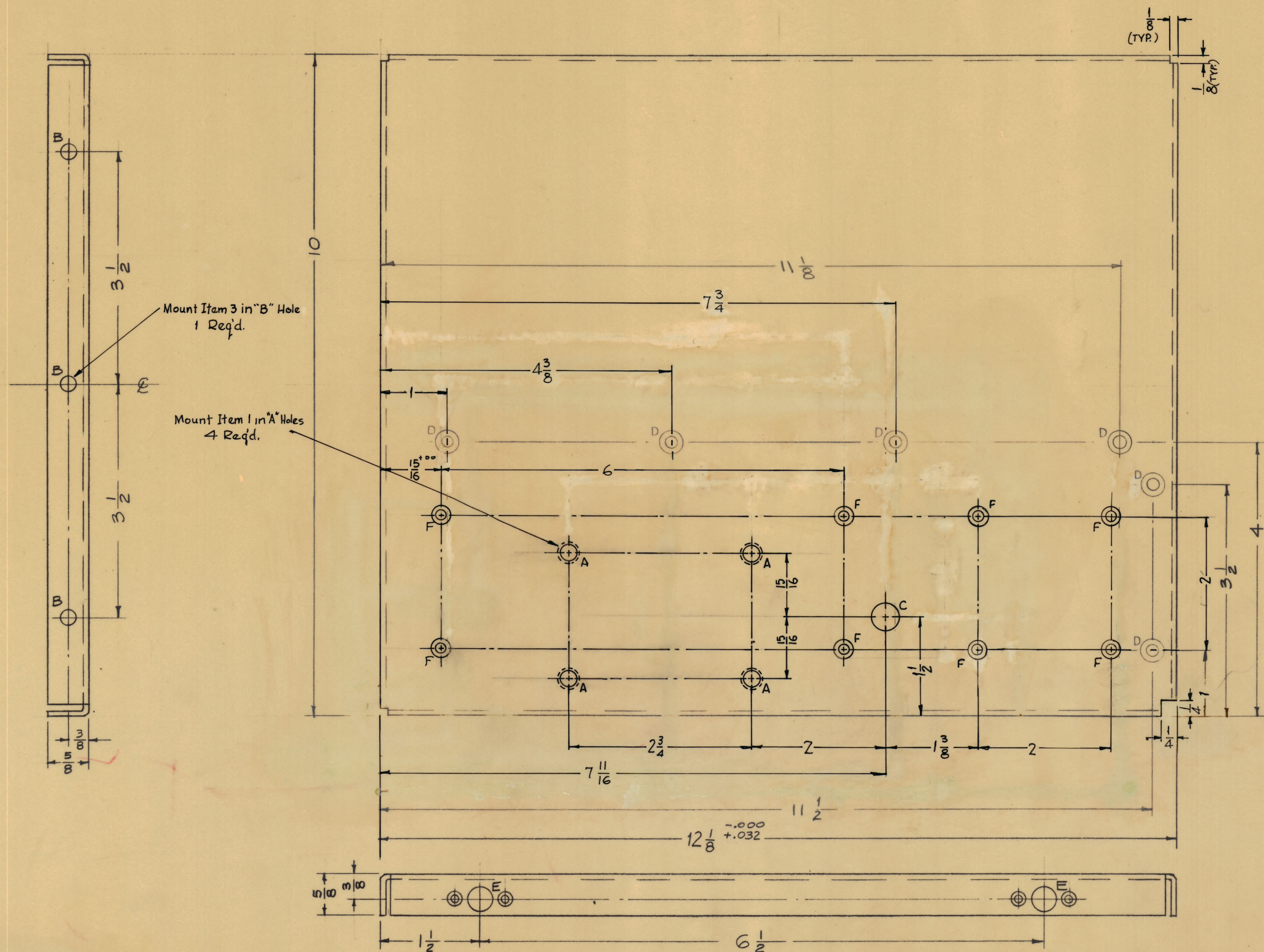
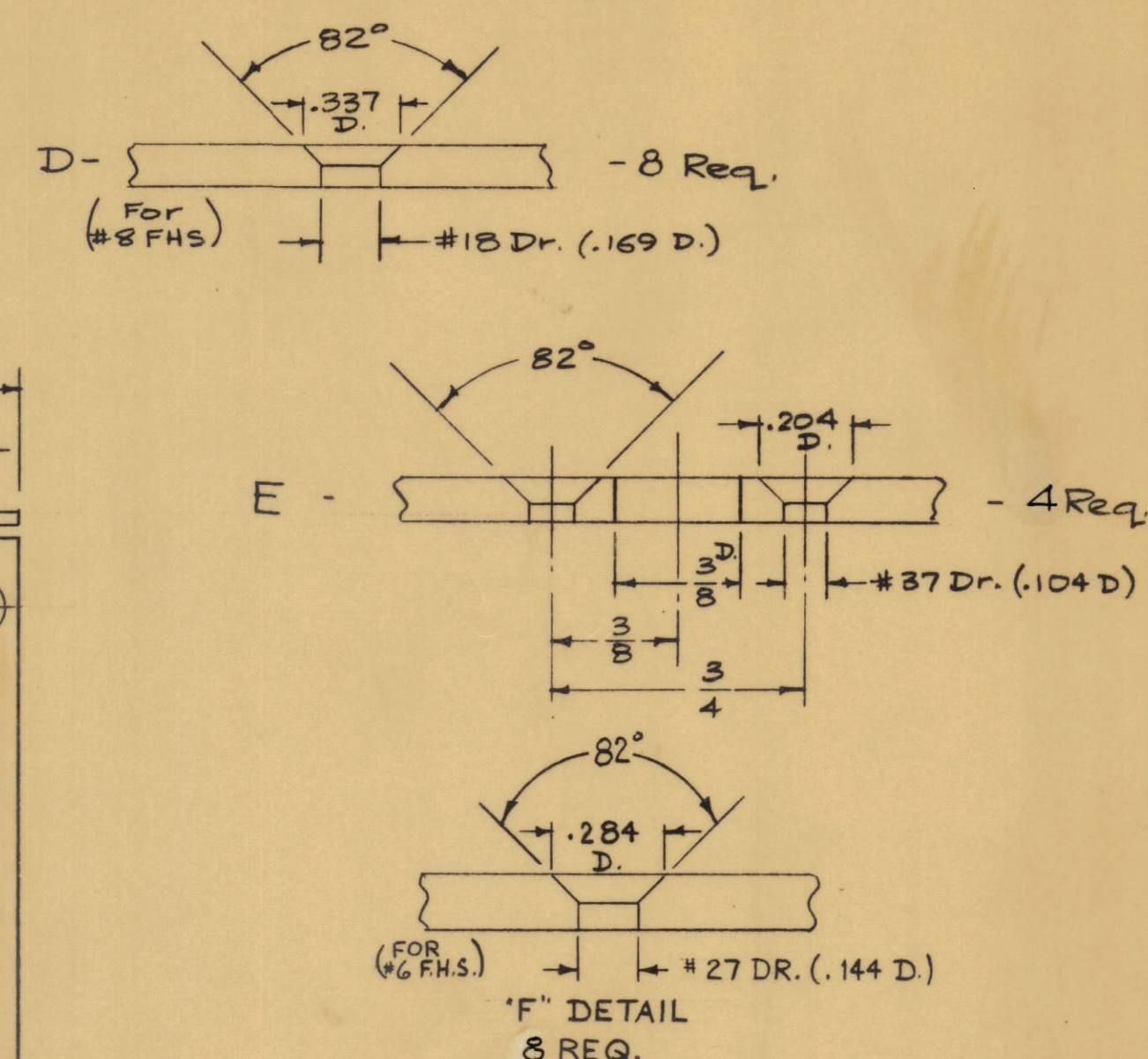
IF IT IS FOUND DESIRABLE TO CHANGE ANY TOLERANCE OR OTHER DETAIL SPECIFIED ON THIS DRAWING NOTIFY THE PURCHASER PROMPTLY.  
 MAXIMUM ALLOWABLE TOLERANCES HAVE BEEN DETERMINED AND DEVIATIONS WILL BE CAUSE FOR REJECTION. REMOVE ALL BURRS AND SHARP EDGES

**NOTICE TO PERSONS RECEIVING THIS DRAWING**

THE TECHNICAL MATERIEL CORPORATION claims proprietary right in the material disclosed herein. This drawing is issued in confidence for engineering information only and may not be reproduced or used to manufacture anything shown herein without permission from THE TECHNICAL MATERIEL CORPORATION to the user. This drawing is loaned for mutual assistance and is subject to recall at any time.

Property of:  
 THE TECHNICAL MATERIEL CORPORATION  
 MAMARONECK, NEW YORK

- A - (.224 DIA.) 4 Req.
- B -  $\frac{15}{64}$  (.234) D. 3 Req.
- C - "Z" Dr. (.413 D.) 1 Req. (For NT-129-524-4)



Mount Item 3 in "B" Hole  
 1 Req'd.

Mount Item 1 in "A" Holes  
 4 Req'd.

Mount ITEM 2 in "C" Hole.  
 1 Req'd.

USE MATERIAL THICKNESS FOR MAX. RADIUS ON ALL BENDS UNLESS OTHERWISE SPECIFIED

MOUNT INSERTS AFTER FINISHING

NOTE:  
 USE MATERIAL THICKNESS FOR MAX. RADIUS UNLESS OTHERWISE SPECIFIED.  
 MOUNT INSERTS AFTER FINISHING

MS-2604

ISSUE	ITEM	CHANGED FROM	DATE	CH. NO.	DRAFTS	CHECKER	ENG. APP.
TOLERANCES							
SCALE: FULL (Do Not Scale)							
DRILL, PUNCH, COMMERCIAL STOCK SIZES AND MANUFACTURERS TOLERANCES ARE NOT INCLUDED.							

1	PS-4A	PAL-1KA		6-1-61
REQ. PER UNIT	MODEL	PROJECT NO.	ASBY. NO.	DATE

1	3	NT-129-1032-4	Nut, Round, Swage Type	
1	2	NT-129-524-4	Nut, Round, Swage Type	
4	1	NT-129-832-4	Nut, Round, Swage Type	
REQ. ITEM	PART NO.	DESCRIPTION		SYMBOL
.081 Thk.		THE TECHNICAL MATERIEL CORP. MAMARONECK, NEW YORK		
ALUMINUM		SIDEPLATE, RIGHT		
5052-H32		(PS-4A)		
TYPE & TEMPER		DRAWN: J. J. MAM		CHKD: RK
HEAT TREAT. SPEC.		ELEG. DES. APP.:		MECH. DES. APP.:
S404 Iridite		CHECKED: JOE		FINAL APPROVAL: Ron Kohn
FINISH & SPEC. NO.				MS-2604