

NOTICE TO PERSONS RECEIVING THIS DRAWING

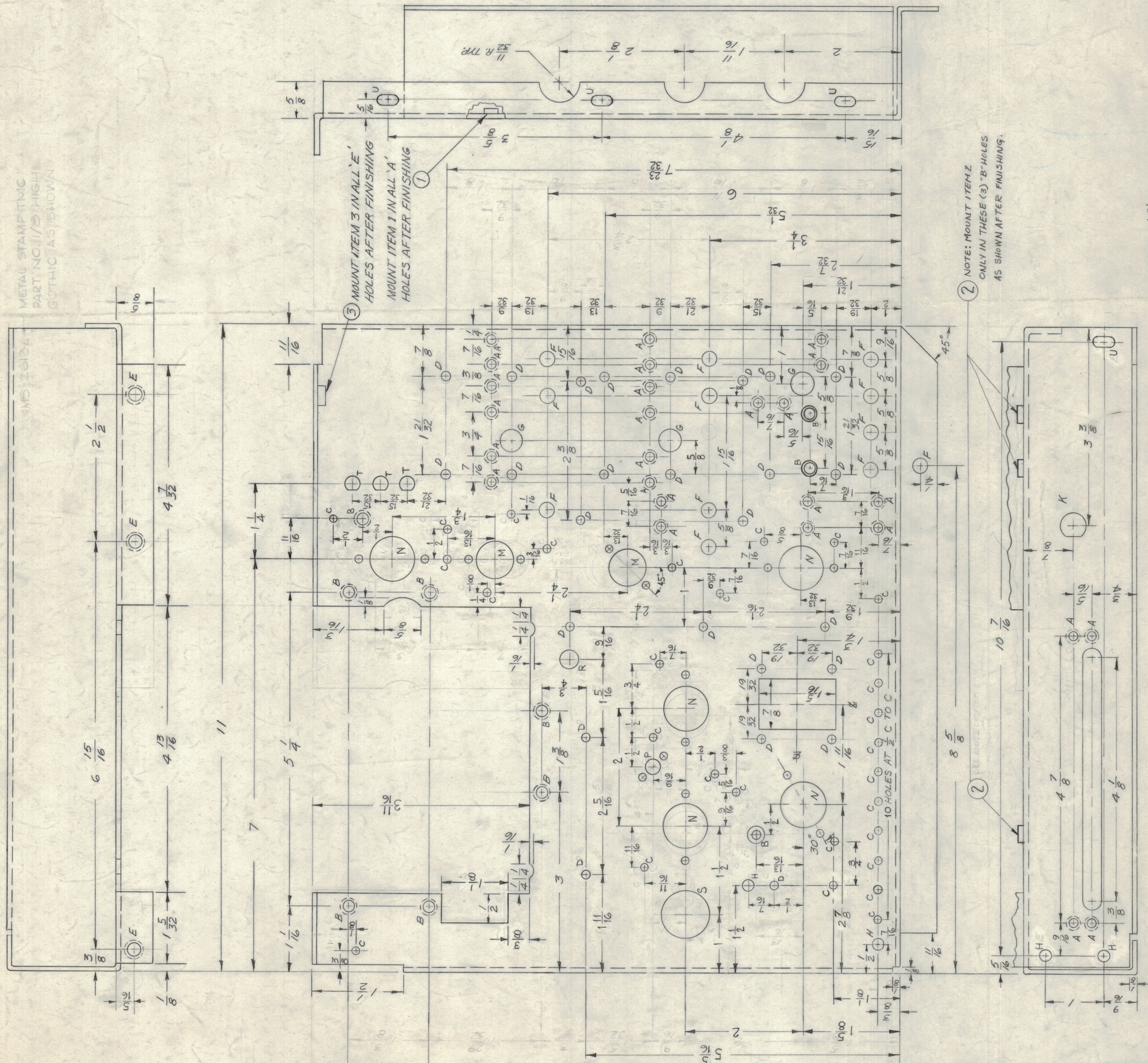
THE TECHNICAL MATERIEL CORPORATION claims proprietary right in the material disclosed herein. This drawing is issued in confidence for engineering information only and may not be reproduced or used to manufacture anything shown, herein without permission from THE TECHNICAL MATERIEL CORPORATION. To the user, this drawing is loaned for mutual assistance and is subject to recall at any time.

Property of:
THE TECHNICAL MATERIEL CORPORATION
MAMARONECK, NEW YORK

MS-2612-0

② MOUNT ITEM 2 IN ALL 'B' HOLES AFTER FINISHING

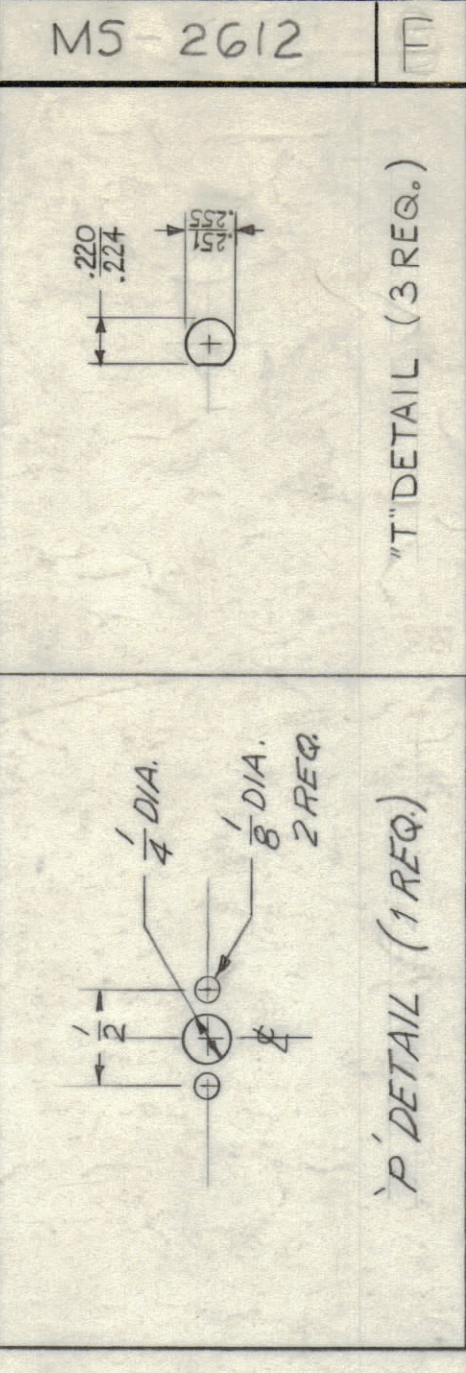
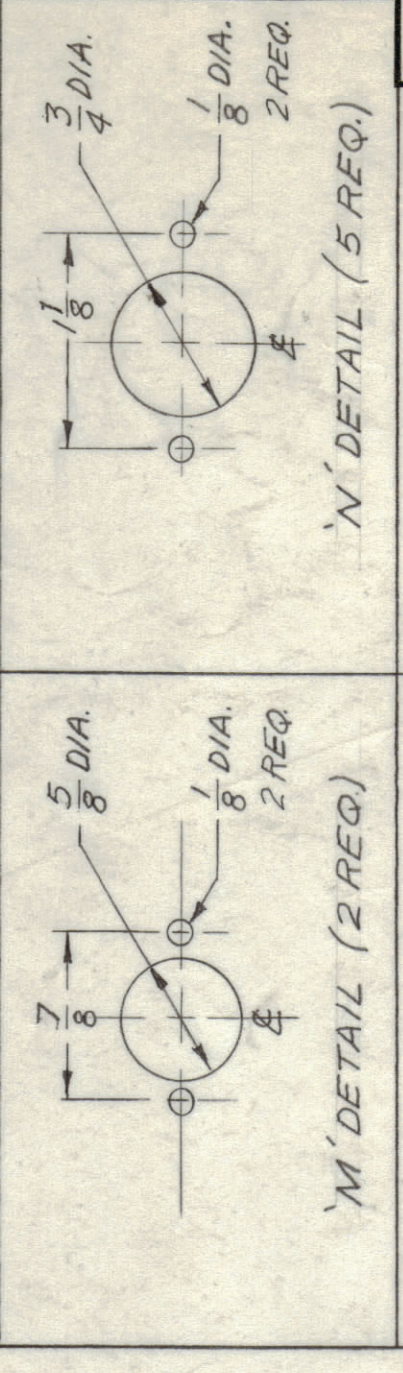
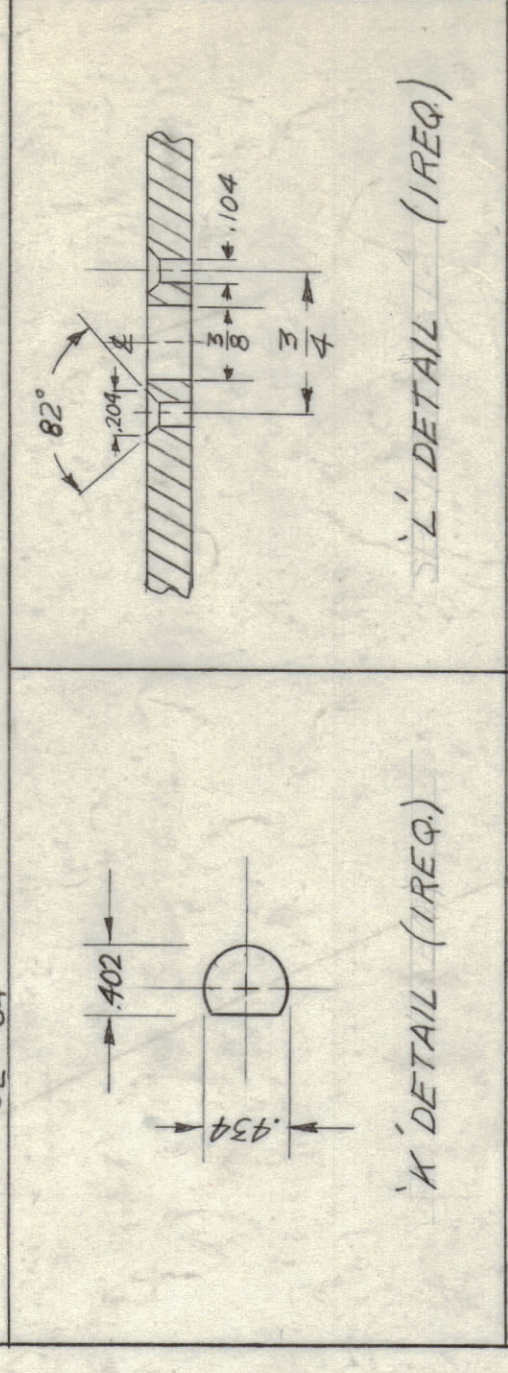
METAL STAMP TMC PART NO. AS SHOWN IN HIGH GOTHIC. W/LATEST REV. LETTER.



HOLE

A	.161 - .164 DIA.
B	.191 - .194 DIA.
C	$\frac{1}{8}$ DIA.
D	$\frac{3}{32}$ DIA.
E	.221 - .224 DIA.
F	$\frac{1}{4}$ DIA.
G	$\frac{3}{8}$ DIA.
H	$\frac{1}{2}$ DIA.
R	$\frac{1}{16}$ DIA.
S	$\frac{13}{16}$ DIA.
U	$\frac{11}{32} \times \frac{11}{64}$ SLOT

30 REQ.
10 REQ.
27 REQ.
26 REQ.
3 REQ.
12 REQ.
3 REQ.
6 REQ.
1 REQ.
1 REQ.
4 REQ.



SYM	ZONE	DESCRIPTION	DATE	CH. NO.	DRAFTS	CHECKED	ENG. APP.
F		4 H HOLES WERE .14 WAS C.S. ITEM 3 DELETED	10-3-61	16962			
E		2 C HOLES ADDED	12-24-61	15312			
D		U SLOT WAS 1/16 X 1/16	8/18/64	11594			
C		ITEM 3 WAS 11 HOLES WAS 25 IF HOLE	4/23/64	11268			
B		E4 WAS 11 U HOLES WERE 11 U HOLES	11-30-61	7732			
A		10 P HOLES ADDED (11 H HOLES DELETED)	11-30-61	5002			
		ON TOP VIEW, 8 U HOLES CLARIFIED	11-30-61	5002			
		10 P HOLES 10 P HOLES	11-30-61	5002			

REF. LD-951(8)

REQ. ITEM	PART NO.	DESCRIPTION	SYMBOL
3	NT129-832-4	NUT, ROUND, SWAGE TYPE	E
10	NT129-832-4	NUT, ROUND, SWAGE TYPE	B
30	NT129-440-4	NUT, ROUND, SWAGE TYPE	A

THE TECHNICAL MATERIEL CORP.	DATE	DRYERS	CHECKED	ENG. APP.
MAMARONECK, NEW YORK	4-22-64			
CHASSIS, MAIN	8-19-61			

MATERIAL	HEAT TREAT SPEC.	FINISH & SPEC. NO.
ALUMINUM	5052-H32	5-404 YEL. IRIDITE
STOCK SIZE		
.064 THICK		

W/A	W/A	MS 2612
DRAWN	CHECKED	MECH. DES. APP.
DESIGNED	DESIGNED	ELEC. DES. APP.
APPROVED	APPROVED	SHEET
		OF