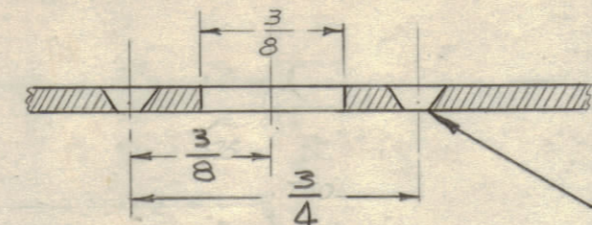


IF IT IS FOUND DESIRABLE TO CHANGE ANY TOLERANCE OR OTHER DETAIL SPECIFIED ON THIS DRAWING NOTIFY THE PURCHASER PROMPTLY.

MAXIMUM ALLOWABLE TOLERANCES HAVE BEEN DETERMINED AND DEVIATIONS WILL BE CAUSE FOR REJECTION. REMOVE ALL BURRS AND SHARP EDGES.

- A ~ DR. & C'SK FOR 8-32 F.H.S. 3 REQ.
- B ~ $\frac{11}{64} \times \frac{11}{32}$ SLOT 4 REQ.
- C ~ SEE DETAIL 4 REQ.
- D ~ .277-.280 DIA. 3 REQ.

'C' DETAIL

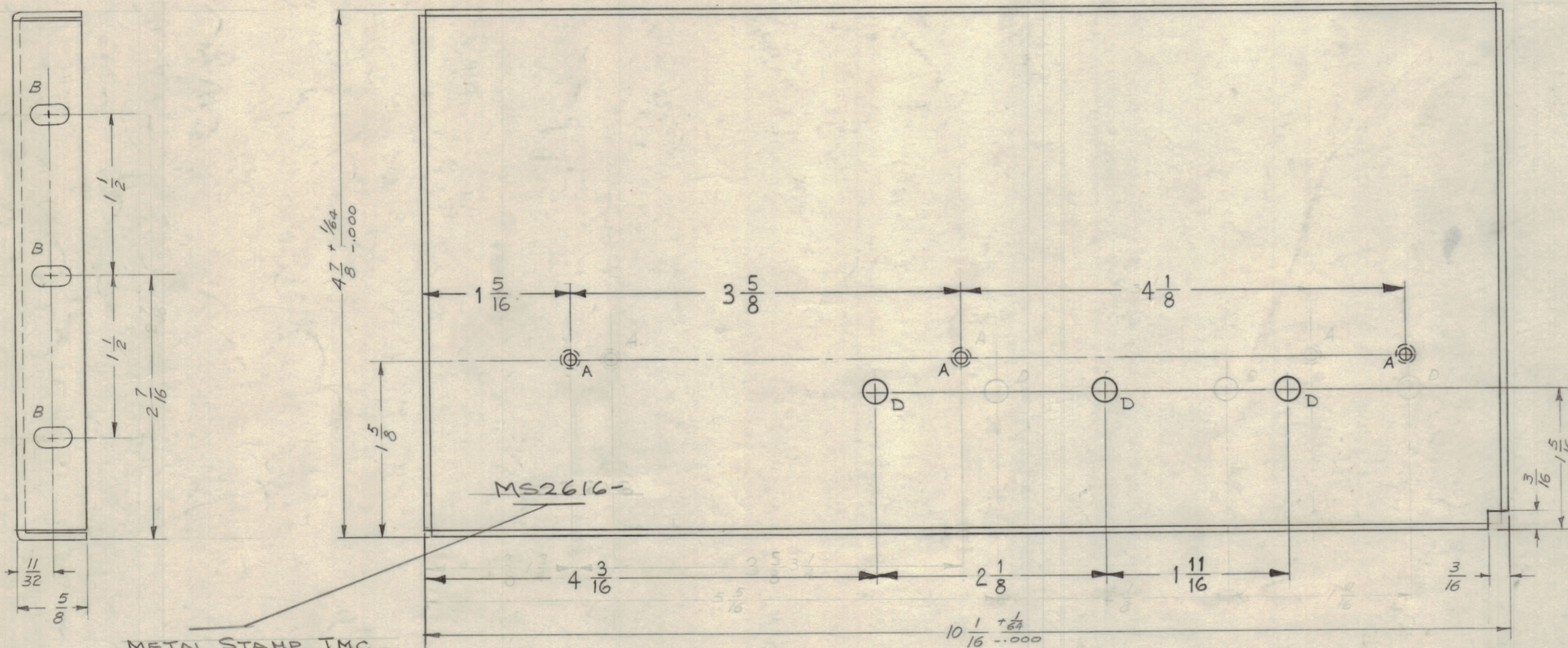
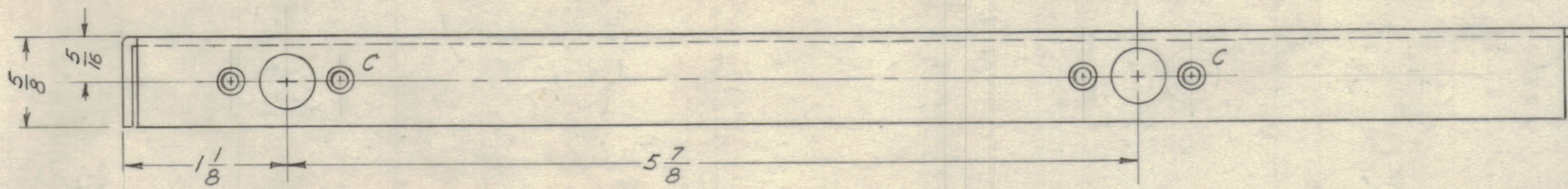


DRILL & C'SINK FOR 3-48 FLAT HEAD SCREW (2 REQ)

NOTICE TO PERSONS RECEIVING THIS DRAWING

THE TECHNICAL MATERIEL CORPORATION claims proprietary right in the material disclosed hereon. This drawing is issued in confidence for engineering information only and may not be reproduced or used to manufacture anything shown hereon without permission from THE TECHNICAL MATERIEL CORPORATION to the user. This drawing is loaned for mutual assistance and is subject to recall at any time.

Property of:
THE TECHNICAL MATERIEL CORPORATION
MAMARONECK, NEW YORK

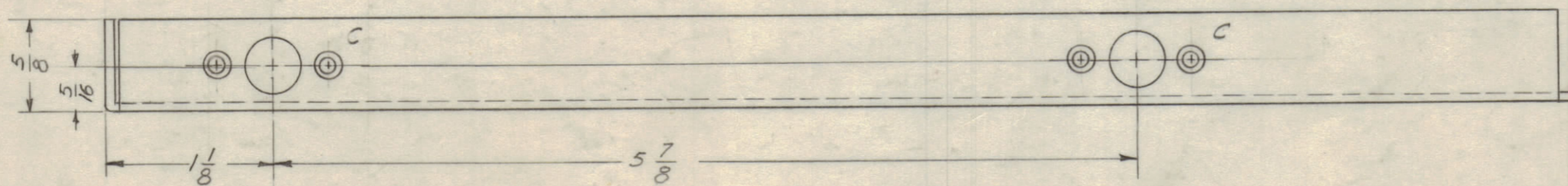


MS2616-

METAL STAMP TMC
PART NO. AS SHOWN
V8 HIGH GOTHIC, W/LATEST
REVISION LETTER.

1
MOUNT
IN ALL
'D' HOLES
AFTER
FINISHING

MS 2616 B



B	D HOLES WERE 7/32 DIA (W/LATEST REV LET) ADD TO DIM #	4-18-61	16098	WHW		
A	15/16 DIM WAS 1 3/8	11-8-61	5802	G.D.L.		
ISSUE	ITEM	CHANGED FROM	DATE	CH. NO.	DRAFTS	CHECKER
TOLERANCES		SCALE: FULL				
ALL OTHERS	DEC. DIM. ± FRAC. DIM. ± ANGULAR DIM. ±	DRILL, PUNCH, COMMERCIAL STOCK SIZES AND MANUFACTURERS TOLERANCES ARE NOT INCLUDED.				

UNLESS OTHERWISE SPECIFIED DIMENSIONS ARE IN INCHES AND INCLUDE CHEMICALLY APPLIED OR PLATED FINISHES

DECIMALS	FRACTIONS
X ± .05	± 1/64
.XX ± .01	ANGLES ± 0° 30'
.XXX ± .005	

CUT HERE GUARANTEED 2-66

1	GPE-1	PROJECT NO.	ASSY. NO.	DATE
REQ. PER UNIT	MODEL	PROJECT NO.	ASSY. NO.	DATE

B-1	NT129-1224-4	NUT, PLN. SDLINE	
REQ. ITEM	PART NO.	DESCRIPTION	SYMBOL
.064 THK		THE TECHNICAL MATERIEL CORP.	
STOCK SIZE		MAMARONECK, NEW YORK	
ALUMINUM	ff	LEFT SIDE PLATE	
MATERIAL	WEIGHT PER PC.		
5052-H32			
TYPE & TEMPER	ff		
HEAT TREAT. SPEC.			
5404-VEL-IRIDITE			
FINISH & SPEC. NO.			

MS 2616 B