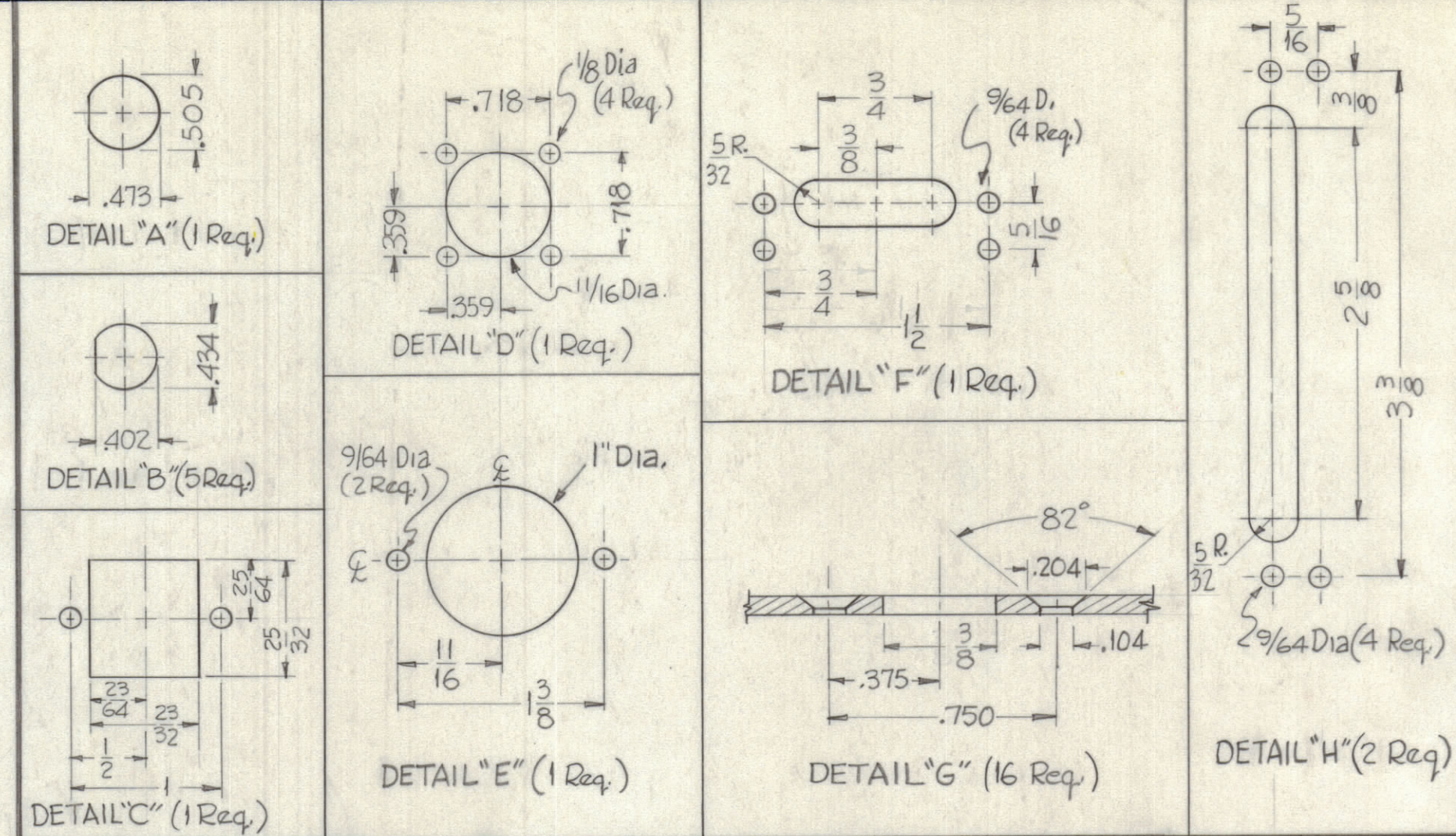
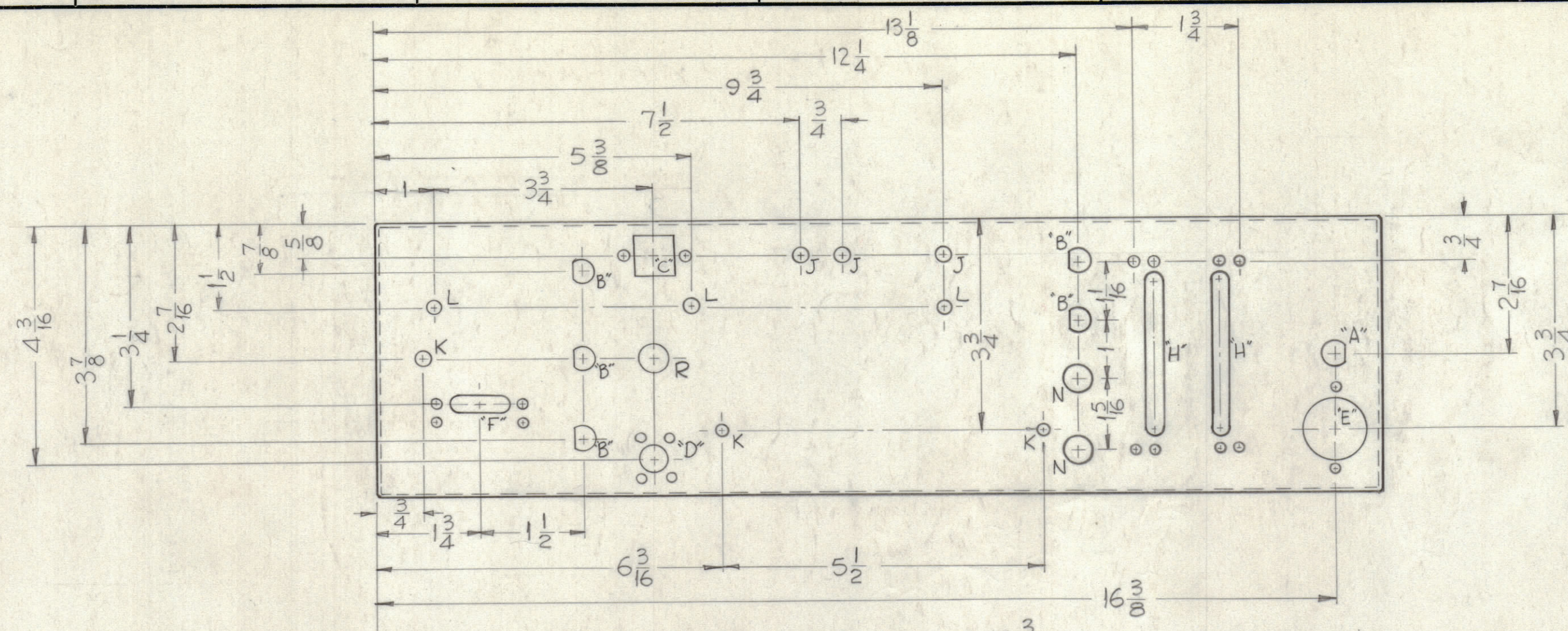


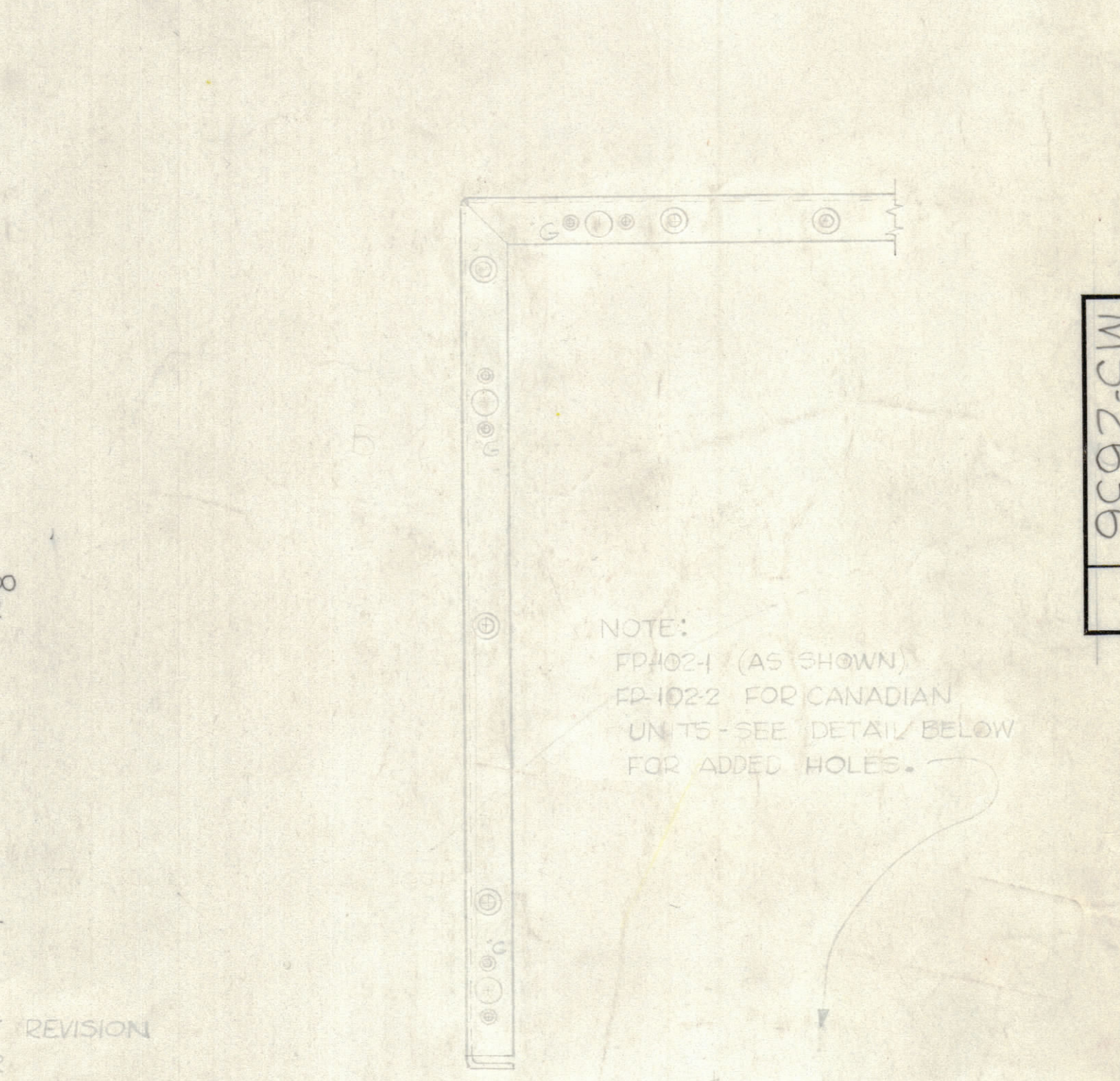
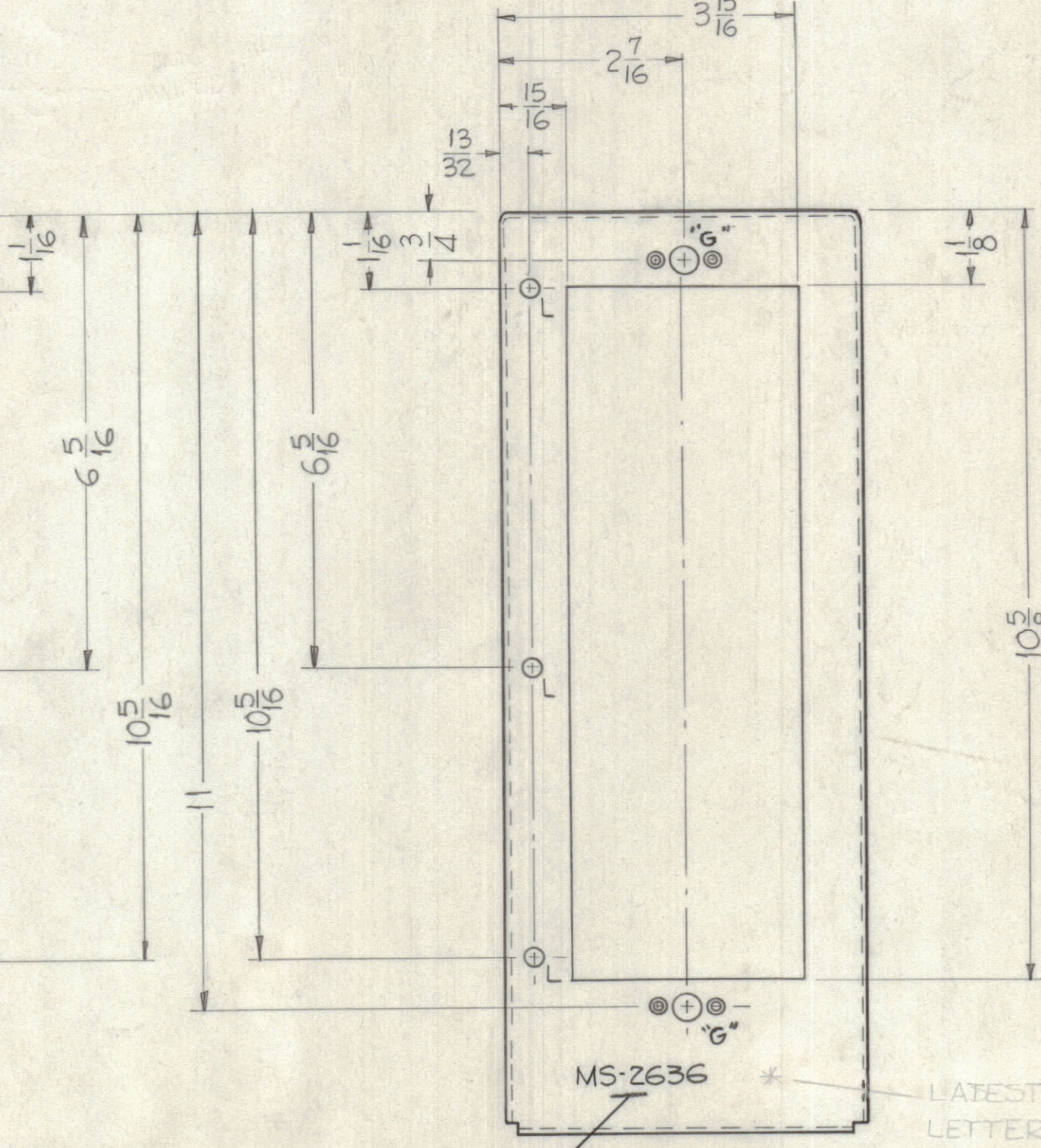
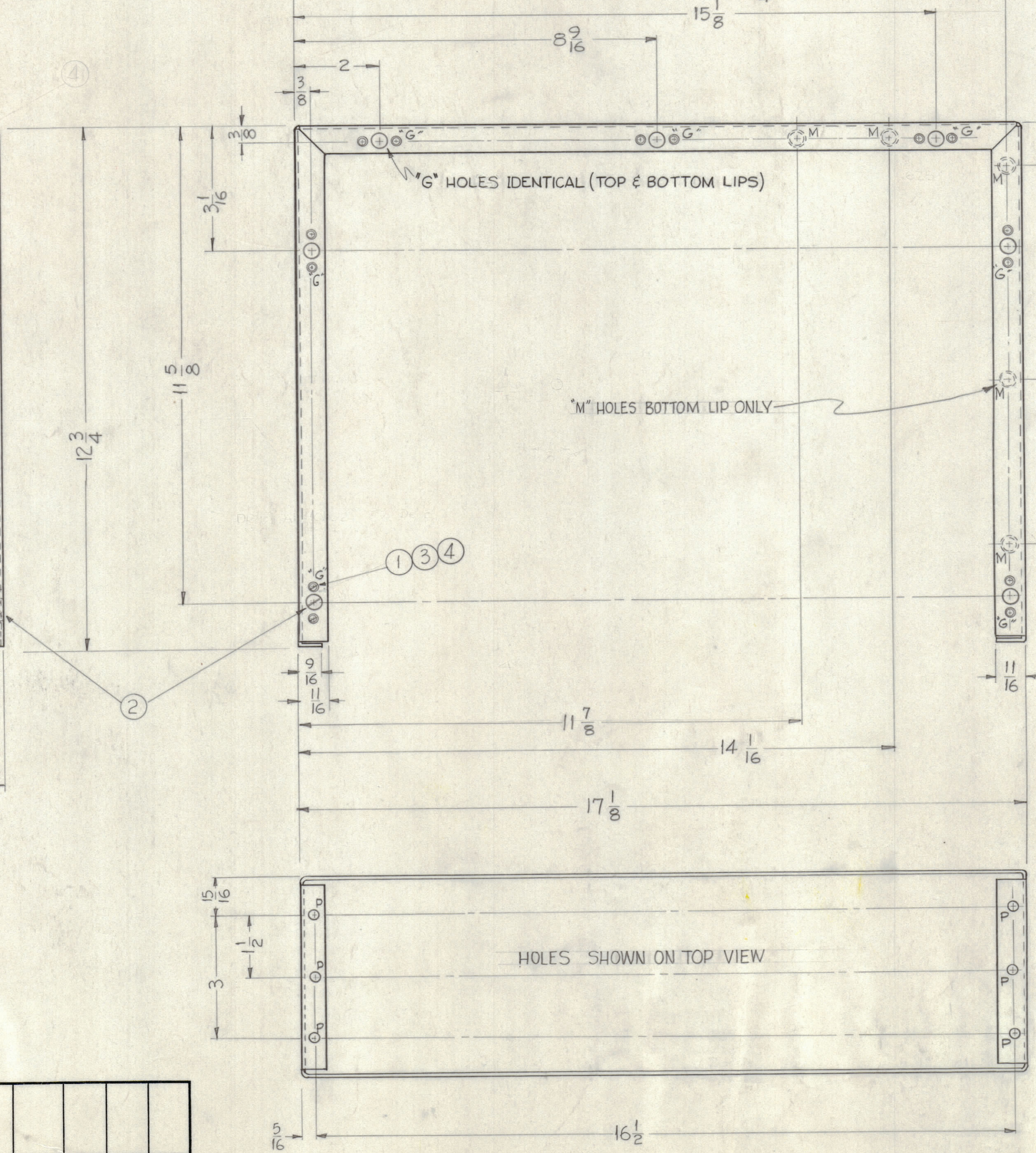
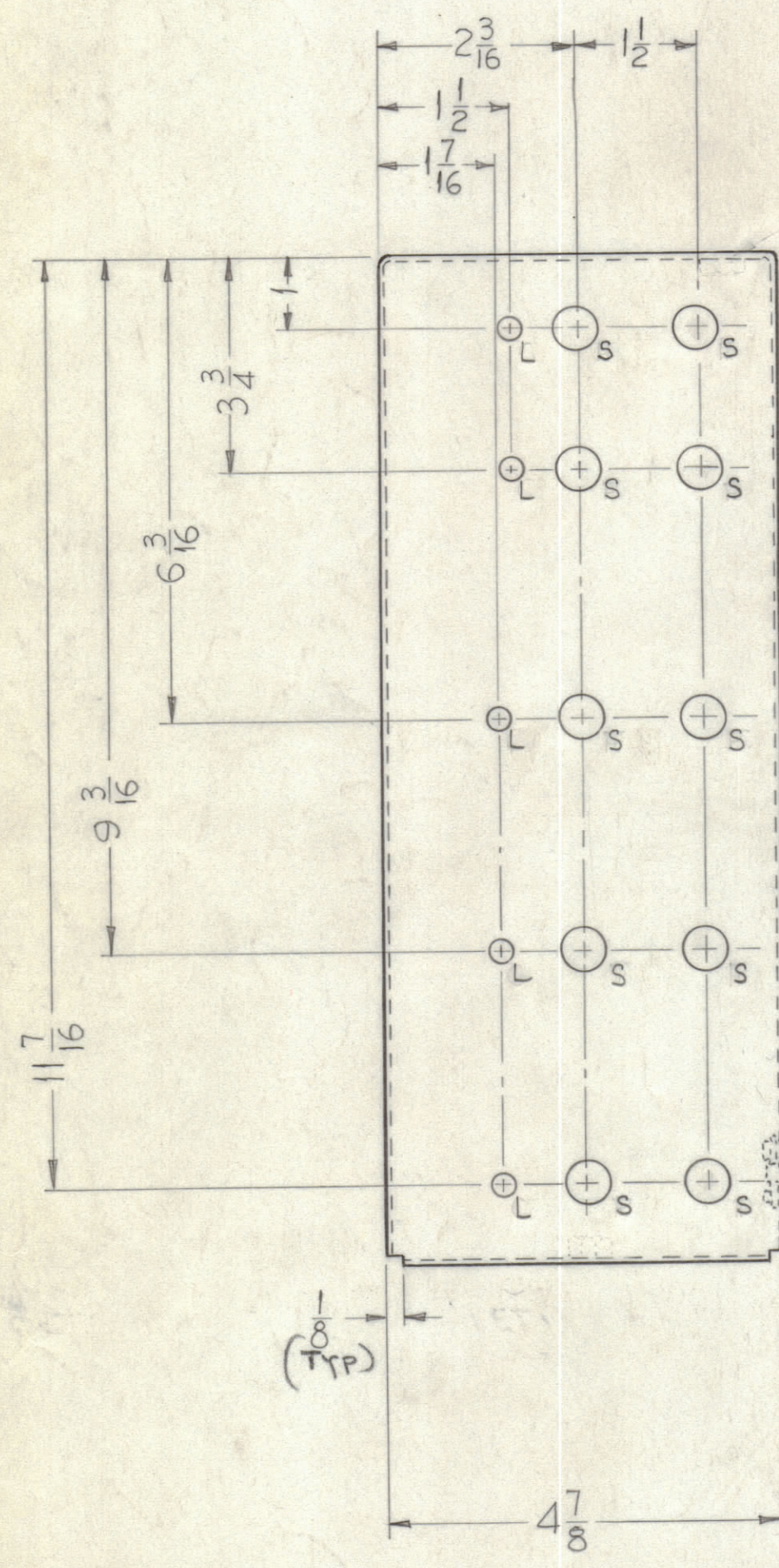
**NOTICE TO PERSONS RECEIVING THIS DRAWING**

THE TECHNICAL MATERIEL CORPORATION claims proprietary right in the material disclosed hereon. This drawing is issued in confidence for engineering information only and may not be reproduced or used to manufacture anything shown hereon without permission from THE TECHNICAL MATERIEL CORPORATION to the user. This drawing is loaned for mutual assistance and is subject to recall at any time.

Property of:  
THE TECHNICAL MATERIEL CORPORATION  
MAMARONECK, NEW YORK



HOLES	REQ.
J- 9/64 Dia.	3
K- 1/64 Dia.	3
L- 13/64 Dia.	11
M- Dr. & CSink for #6 F.H.S.	5
N- 1/2 Dia.	2
P- 1/4 Dia.	6
R- 1/16 Dia.	1
S- 3/8 DIA.	10
T- 1/8 Dia.	10



NOTE:  
FD-1024 (AS SHOWN)  
FD-1022 FOR CANADIAN  
UNITS - SEE DETAIL BELOW  
FOR ADDED HOLES.

TMC PART NO TO BE METAL STAMPED  
1/8 HIGH GOTHIC AS SHOWN

- NOTES:
- 1/16 Radius on all Bends.
  - All bends to be 90°.
  - Mount Inserts after finishing.

REQ. ITEM	PART NO.	DESCRIPTION	SYMBOL
32 4	NTH0348BN6	Nut, Hex.	
32 3	LWS03LRN	Lockwasher, Split	
16 2	F5-102-1	Spring Unit	
32 1	SCFS0348BN4	Screw, Machine	

MATERIAL		FINISH & SPEC. NO.	
.064 THK. STOCK SIZE		THE TECHNICAL MATERIEL CORP. MAMARONECK, NEW YORK	
ALUMINUM		CHASSIS FRAME	
525-H32		FFR-35	
TYPE & TEMPER		HEAT TREAT. SPEC.	
S-404 YELLOW IRIDIOTE		ELEC. DES. APP. MECH. DES. APP.	

REQ. PER UNIT	MODEL	SECTION	ASSY. NO.	DATE	USED ON
1	FFR-35			7-31-61	

SYM	ZONE	DESCRIPTION	DATE	CH. NO.	DRAFTS	CHECKER	ENG. APP.

UNLESS OTHERWISE SPECIFIED: DIMENSIONS ARE IN INCHES AND INCLUDE CHEMICALLY APPLIED OR PLATED FINISHES.

TOLERANCES: DECIMALS ±.005, FRACTIONS ± 1/64, ANGLES ± 30°

SCALE: Half

MAXIMUM ALLOWABLE TOLERANCES HAVE BEEN DETERMINED AND ANY DEVIATIONS WILL BE CAUSE FOR REJECTION. REMOVE ALL BURRS & SHARP EDGES.

MS-2636