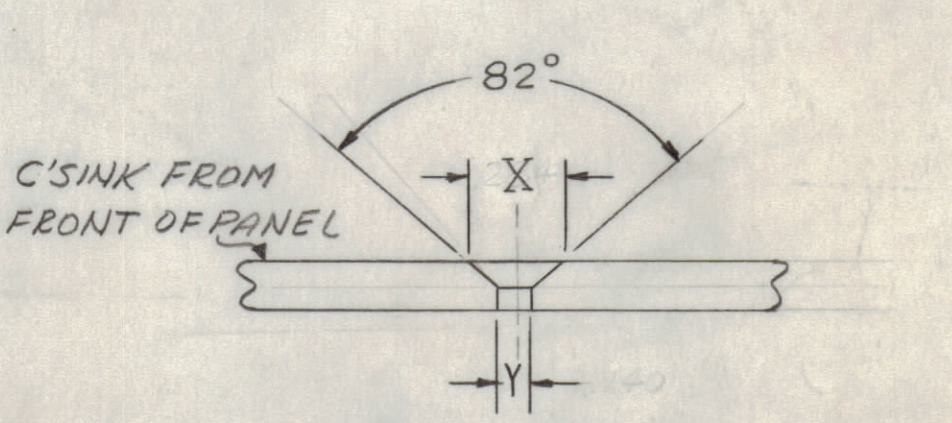
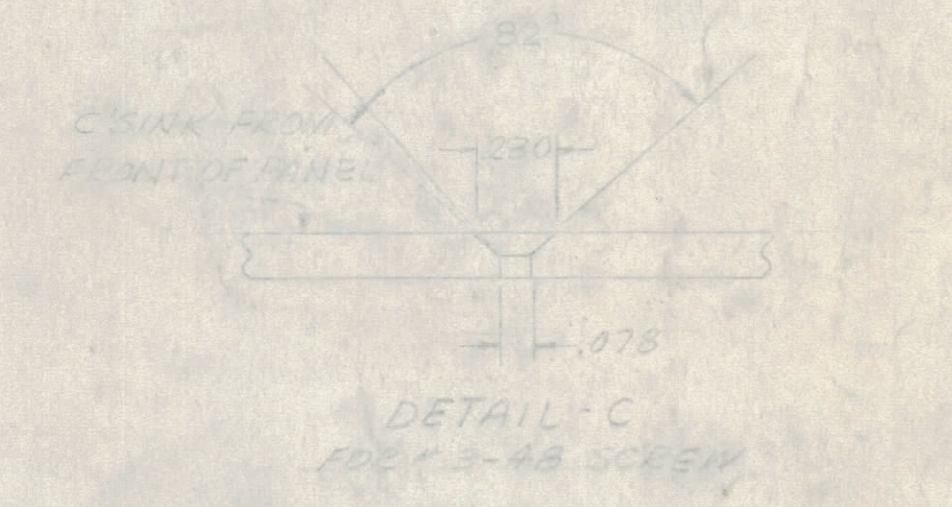
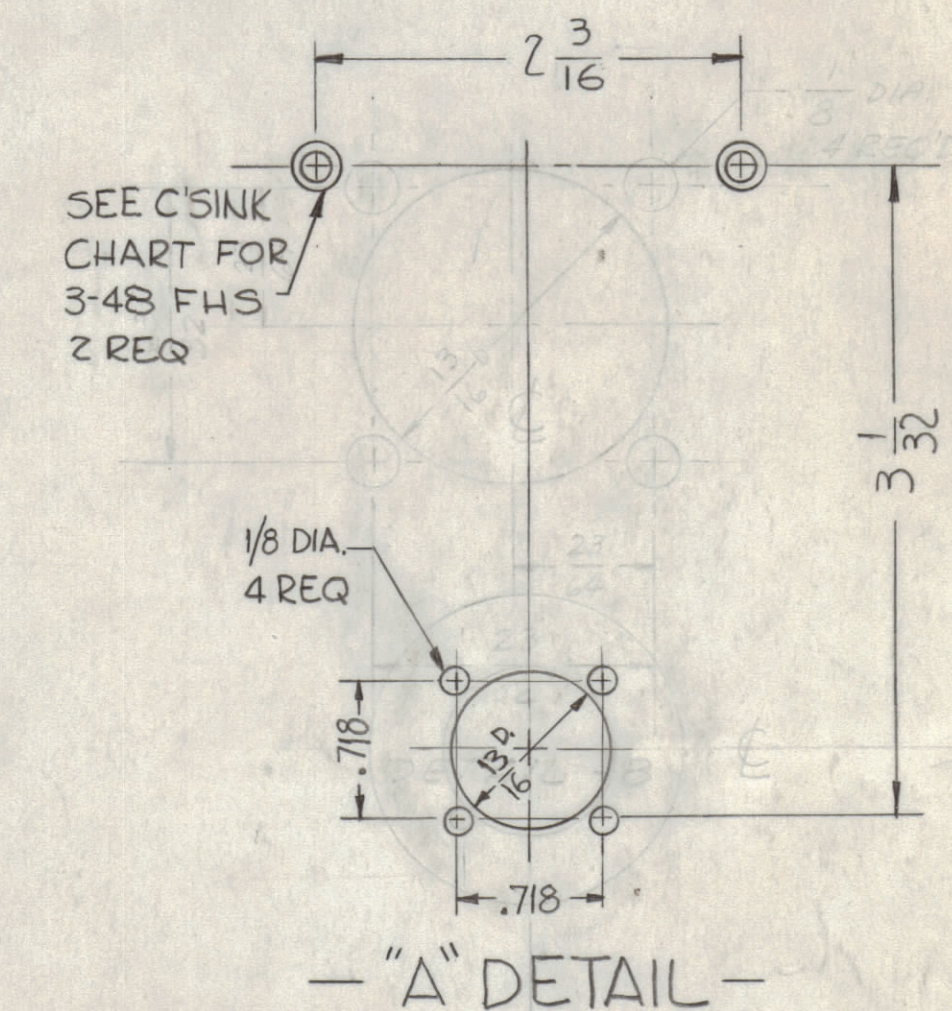
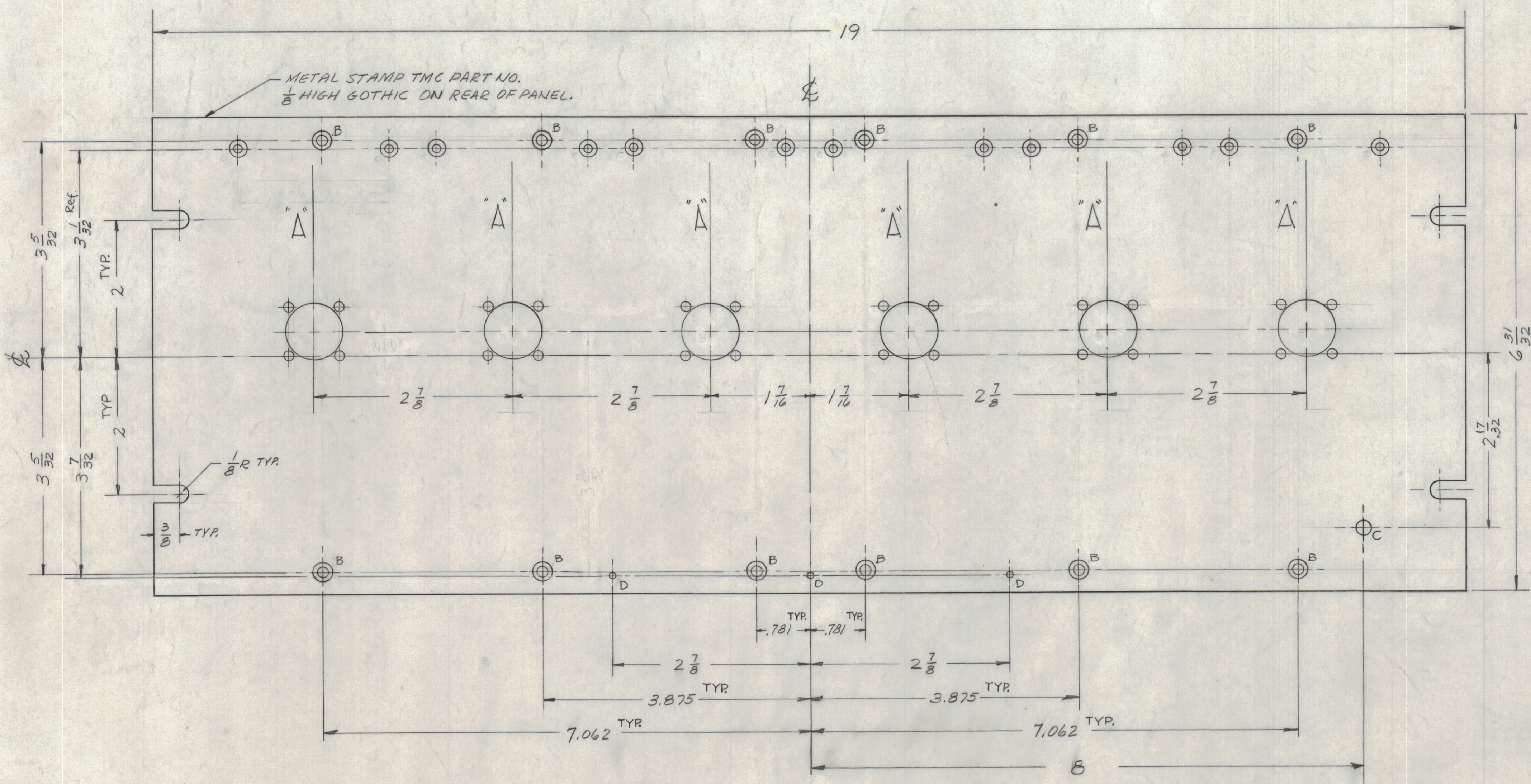


NOTICE TO PERSONS RECEIVING THIS DRAWING

THE TECHNICAL MATERIEL CORPORATION claims proprietary right in the material disclosed herein. This drawing is issued in confidence for engineering information only and may not be reproduced or used to manufacture anything shown hereon without permission from THE TECHNICAL MATERIEL CORPORATION to the user. This drawing is loaned for mutual assistance and is subject to recall at any time.

Property of:
THE TECHNICAL MATERIEL CORPORATION
MAMARONECK, NEW YORK

HOLES -
A - SEE DETAIL 6 REQ'D.
B - SEE CHART 12 REQ'D.
C - $\frac{13}{64}$ DIA. 1 REQ'D.
D - .078 DIA 3 REQ'D.



CHART

HOLES	SCREW TYPE	X	Y
A DETAIL	3-48 FHS	.204	← DRILL & TAP FOR 3-48
B	6-32 FHS	.284	.144

MACHINING -
1- LATERAL BOW OF PANEL, MUST BE KEPT TO .031 TOL.
2- MILL ALL EDGES.
3- HOLES MUST BE DRILLED.
4- ALL THREADED HOLES & HOLE DIAM. MUST BE HELD AFTER ETCHING.
5- PANEL MUST BE FREE OF ALL MACHINING MARKS, GOUGES & SCRATCHES.
IF NECESSARY SAND FRONT, WITH NO. 120 GRIT SANDPAPER.

FINISH -
S404 - YELLOW IRIDITE
S114 - ZINC CHROMATE PRIMER
S115 - TMC SMOOTH GREY ENAMEL } FRONT & EDGES ONLY
OR
PRIME & PAINT PER CUSTOMER

UNLESS OTHERWISE SPECIFIED DIMENSIONS ARE IN INCHES AND INCLUDE CHEMICALLY APPLIED OR PLATED FINISHES

DECIMALS	FRACTIONS	TOLERANCES
XX ± .01	XX ± 1/64	ANGLES ± 1/2°
XXX ± .004		

SYM	ZONE	DESCRIPTION	DATE	CH. NO.	DRAFTS	CHECKER	ENG. APP.
A	CI	Was .104 Dia. On "A" Detail	11-29-61	5962	5		

DIMENSIONS ARE IN INCHES
TOLERANCES ON FRACTIONS ± 1/64 DECIMALS ± .005 ANGLES ± 1/2°

SCALE
MAXIMUM ALLOWABLE TOLERANCES HAVE BEEN DETERMINED AND ANY DEVIATIONS WILL BE CAUSE FOR REJECTION. REMOVE ALL BURRS & SHARP EDGES

REQ. PER UNIT	MODEL	SECTION	ASS'Y. NO.	DATE	USED ON
1	JPP-7DGX6			10-2-61	

REQ. ITEM	PART NO.	DESCRIPTION	SYMBOL
	3/16 THICK	THE TECHNICAL MATERIEL CORP. MAMARONECK, NEW YORK	
	ALUMINUM	PANEL, FRONT	
	2024-T3		
		DRWN	RUZZO
		CHECKED	
		HEAT TREAT. SPEC.	
		FINISH & SPEC. NO.	
		ELEC. DES. APP.	
		MECH. DES. APP.	
		SHEET	OF

MS-2670

MS-2670