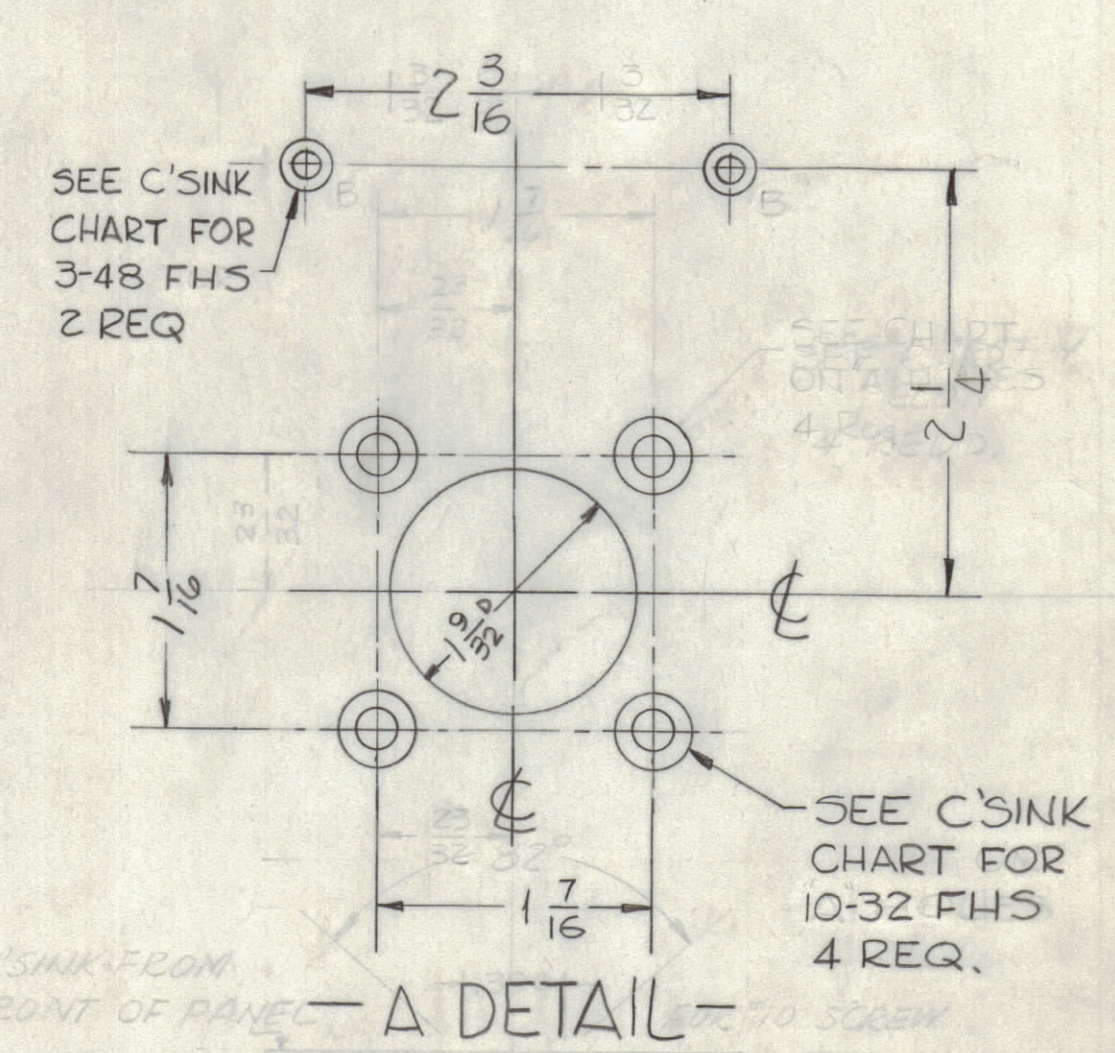
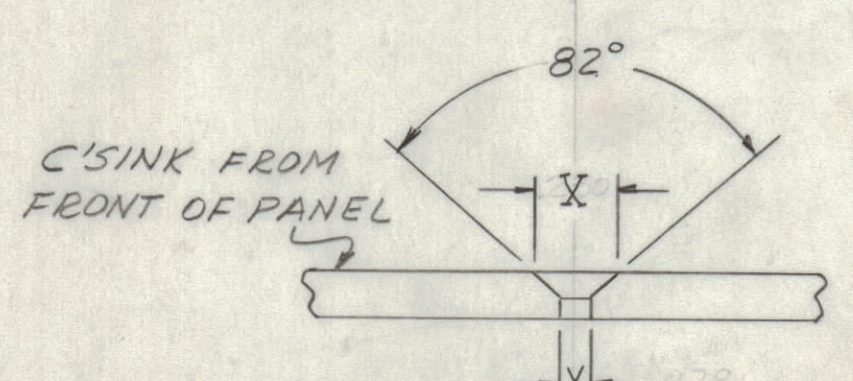


- HOLES -**
- A - SEE DETAIL 4 REQ'D.
 - B - .078 DRILL 3 REQ'D
 - C - SEE CHART 12 REQ'D.
 - D - 1/32 DIA. 1 REQ'D.
 - E - .078 DRILL 3 REQ'D.



SEE C'SINK CHART FOR 10-32 FHS 4 REQ.



HOLES	SCREW TYPE	X	Y
A' DETAIL	10-32	.390	.196
A' DETAIL	3-48 FHS	.204	
C	6-32 FHS	.284	.144

DRILL & TAP FOR 3-48

NOTICE TO PERSONS RECEIVING THIS DRAWING

THE TECHNICAL MATERIEL CORPORATION claims proprietary right in the material disclosed hereon. This drawing is issued in confidence for engineering information only and may not be reproduced or used to manufacture anything shown hereon without permission from THE TECHNICAL MATERIEL CORPORATION to the user. This drawing is loaned for mutual assistance and is subject to recall at any time.

Property of:
THE TECHNICAL MATERIEL CORPORATION
MAMARONECK, NEW YORK

- MACHINING -**
- 1- LATERAL BOW OF PANEL MUST BE KEPT TO .031 TOL.
 - 2- MILL ALL EDGES.
 - 3- HOLES MUST BE DRILLED.
 - 4- ALL THREADED HOLES & HOLE DIAM. MUST BE HELD AFTER ETCHING.
 - 5- PANEL MUST BE FREE OF ALL MACHINING MARKS, GOUGES & SCRATCHES. IF NECESSARY SAND FRONT, WITH NO. 120 GRIT SANDPAPER.

- FINISH -**
- S404 - YELLOW IRIDITE
 - S114 - ZINC CHROMATE PRIMER
 - S115 - TMC SMOOTH GREY ENAMEL
- FRONT & EDGES ONLY
OR
PRIME & PAINT PER CUSTOMER

UNLESS OTHERWISE SPECIFIED DIMENSIONS ARE IN INCHES AND INCLUDE CHEMICALLY APPLIED OR PLATED FINISHES	
DECIMALS: ± .005	FRACTIONS: ± 1/64
ANGLES: ± 30'	

UNLESS OTHERWISE SPECIFIED:	SCALE
DIMENSIONS ARE IN INCHES	
TOLERANCES ON FRACTIONS ± 1/64	MAXIMUM ALLOWABLE TOLERANCES HAVE BEEN DETERMINED AND ANY DEVIATIONS WILL BE CAUSE FOR REJECTION. REMOVE ALL BURRS & SHARP EDGES
DECIMALS ± .005	
ANGLES ± 1/2°	

REQ. PER UNIT	MODEL	SECTION	ASS'Y. NO.	DATE
1	JPP-9F9X4			10-2-61

REQ. ITEM	PART NO.	DESCRIPTION	SYMBOL
3/16 THICK		THE TECHNICAL MATERIEL CORP. MAMARONECK, NEW YORK	
ALUMINUM		PANEL, FRONT	
2024-T3	08	RUZZO	CHK
TYPE & TEMPER	HEAT TREAT, SPEC.	DRAWN	CHECKED
SEE NOTES			FINAL APPROVAL
FINISH & SPEC. NO.	ELEC. DES. APP.	MECH. DES. APP.	SHEET OF
			MS-2672

MS-2672