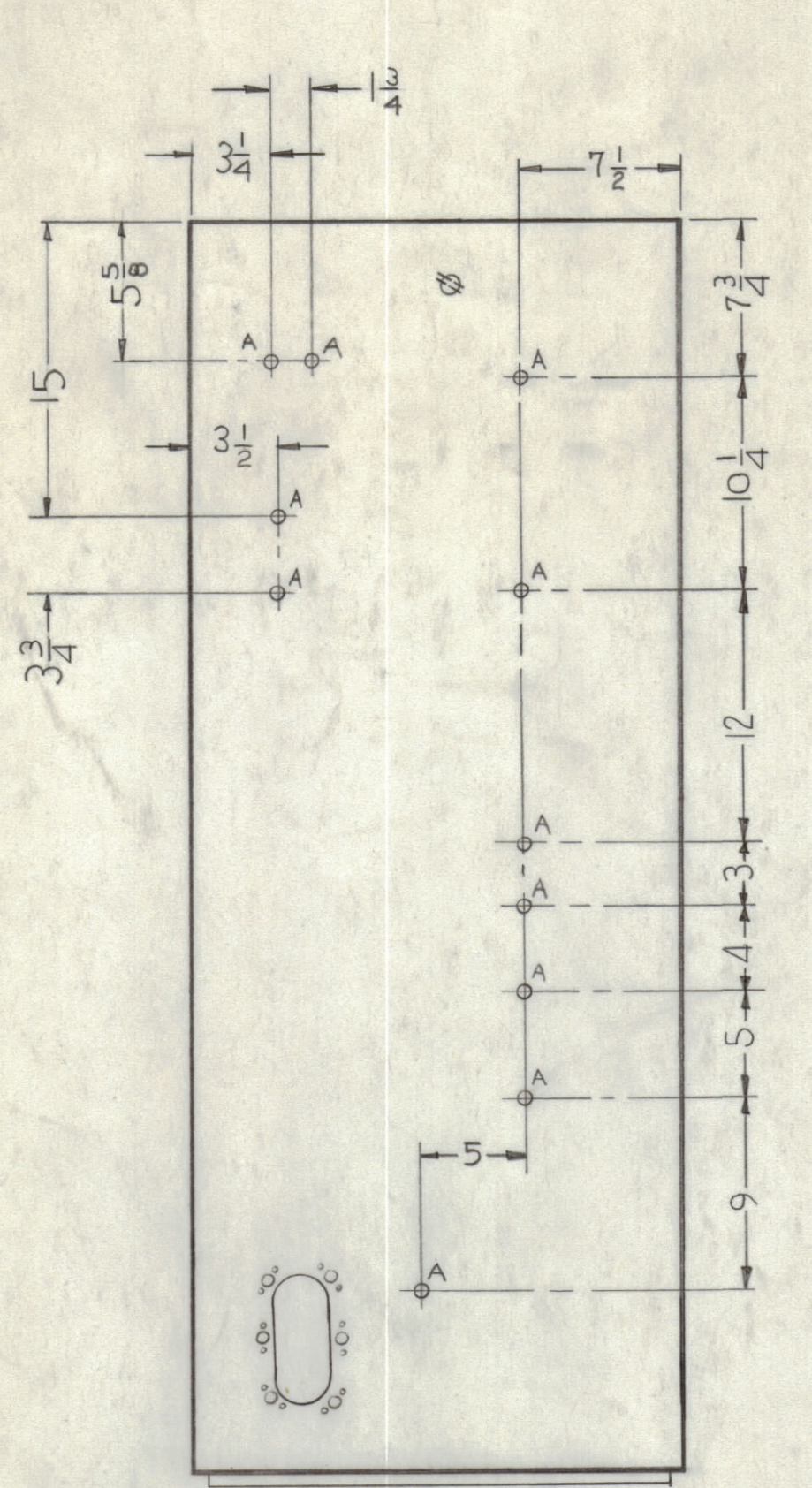
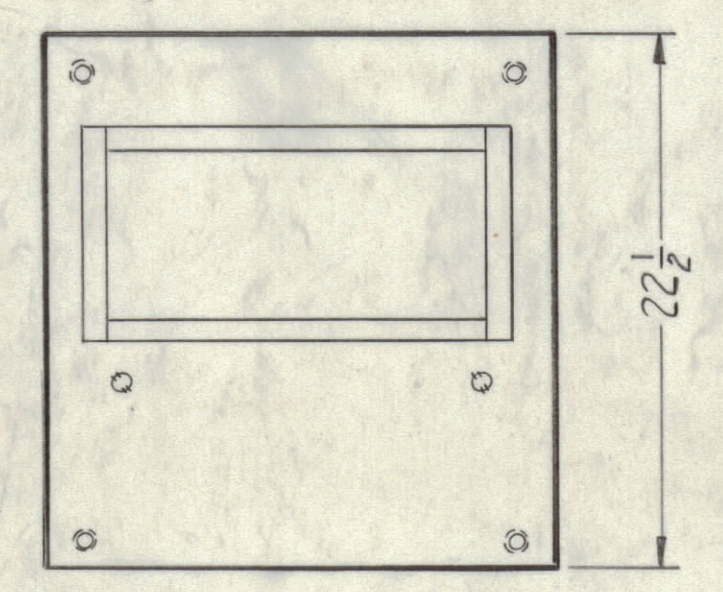


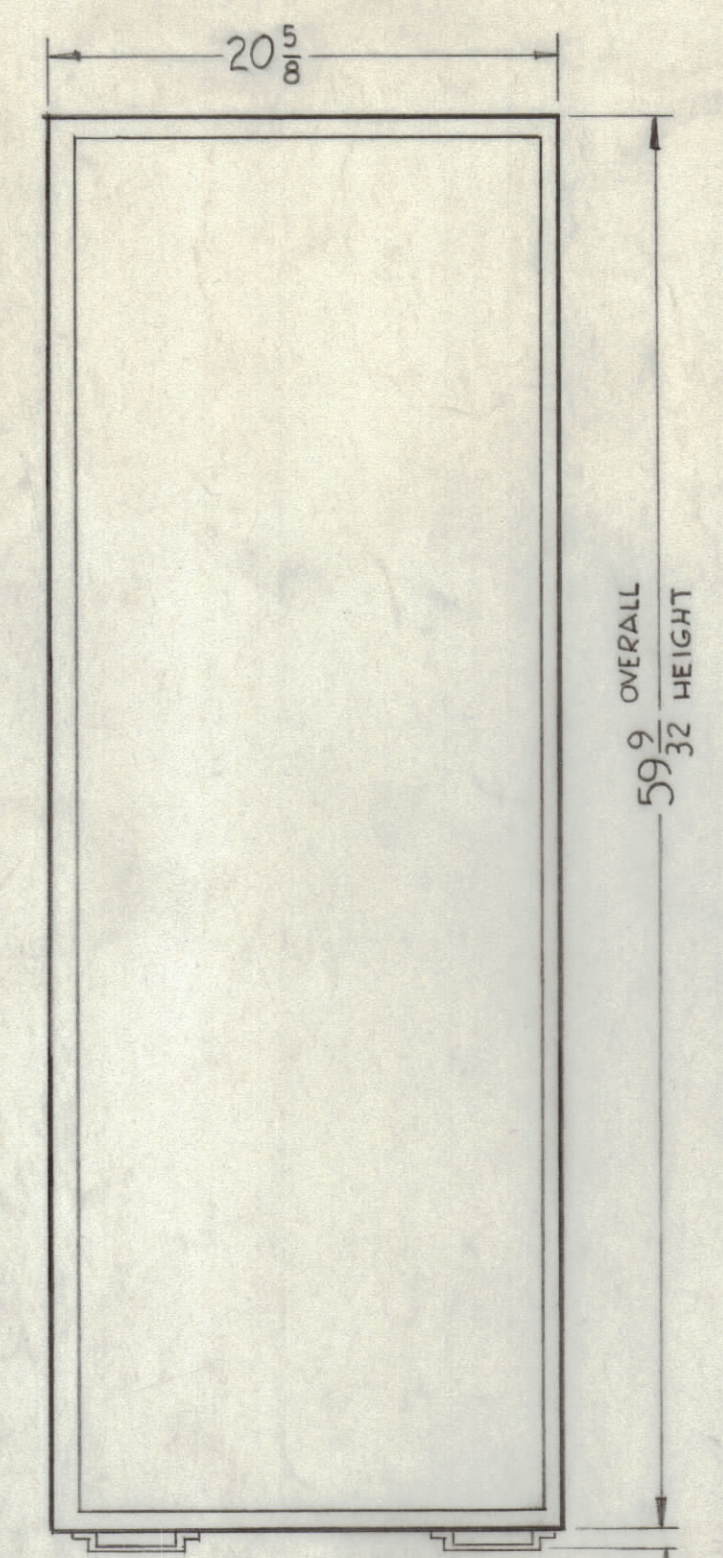
NOTICE TO PERSONS RECEIVING THIS DRAWING
 THE TECHNICAL MATERIEL CORPORATION claims proprietary right in the material disclosed herein. This drawing is issued in confidence for engineering information only and may not be reproduced or used to manufacture anything shown hereon without permission from THE TECHNICAL MATERIEL CORPORATION to the user. This drawing is loaned for mutual assistance and is subject to recall at any time.
 Property of:
 THE TECHNICAL MATERIEL CORPORATION
 MAMARONECK, NEW YORK



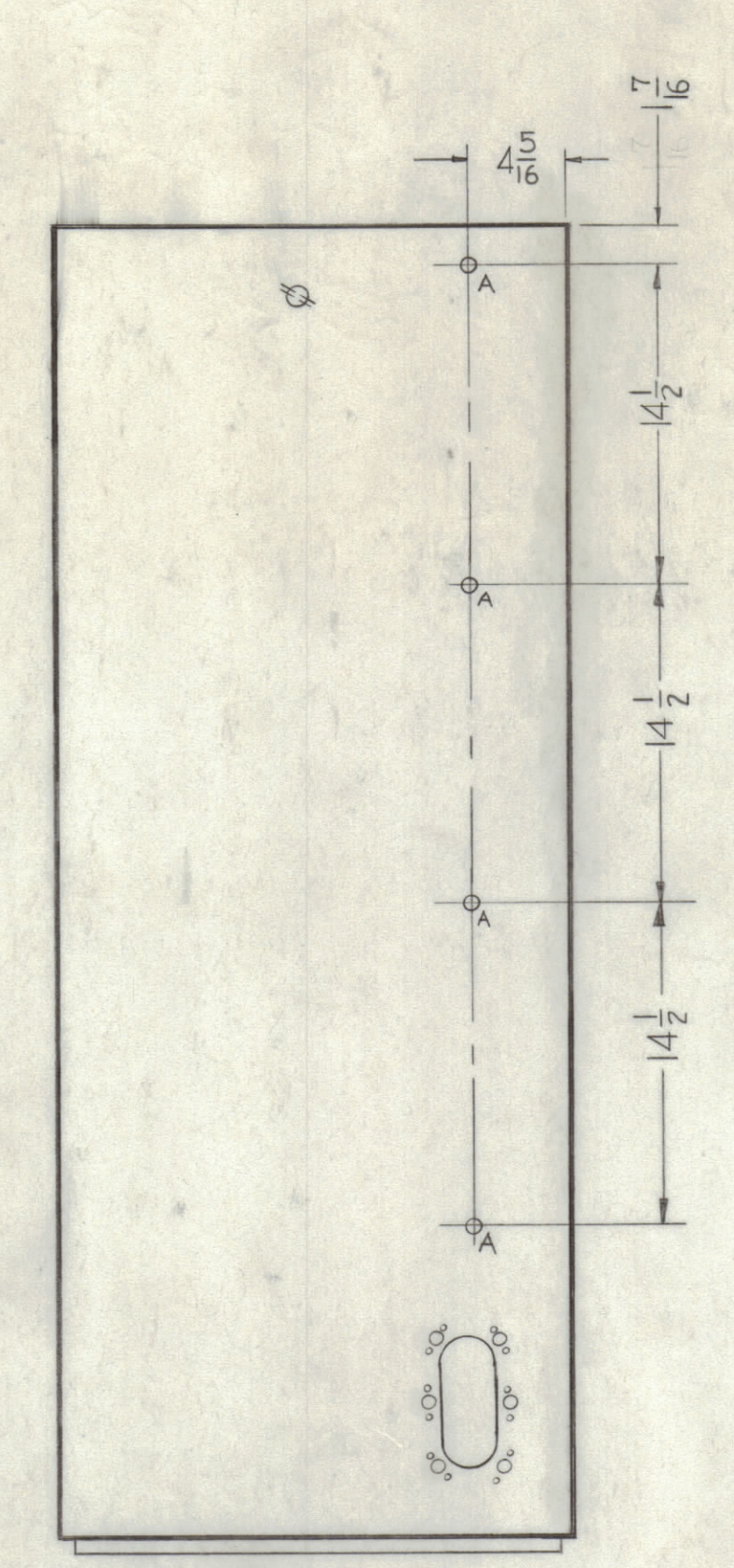
—LEFT SIDE—



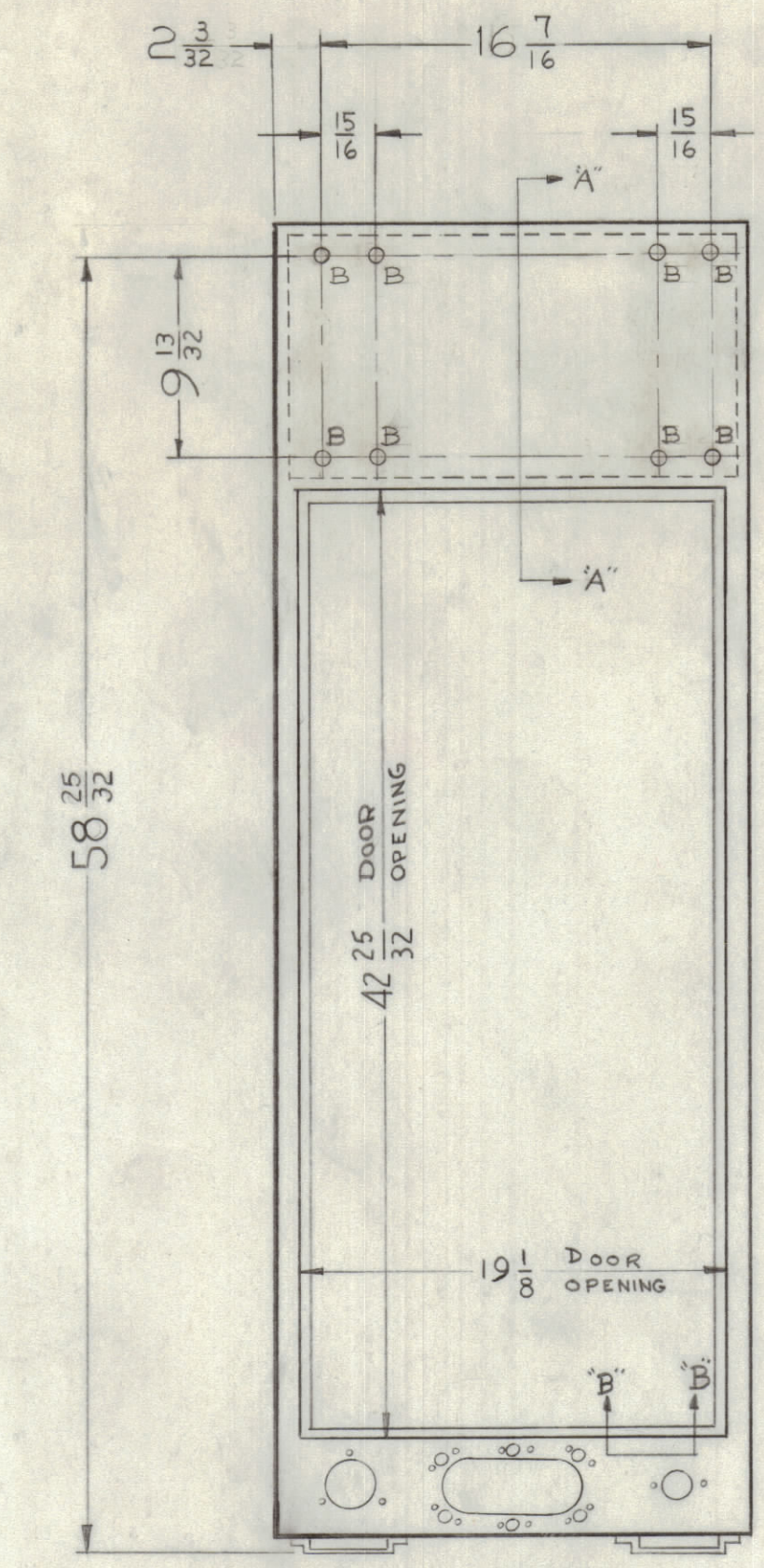
—TOP—



—FRONT—

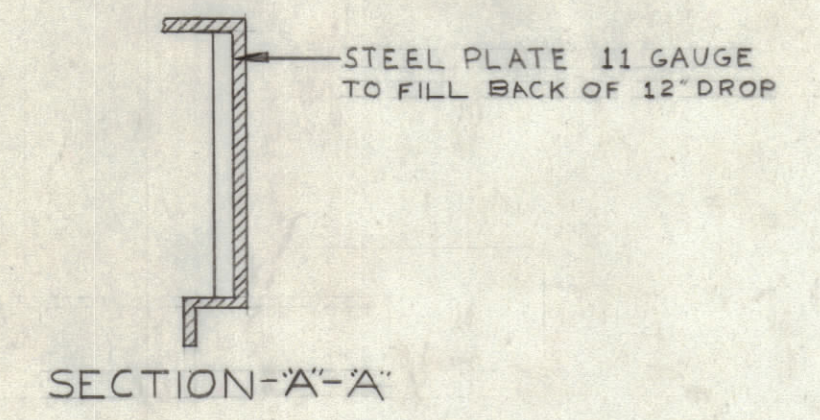


—RIGHT SIDE—

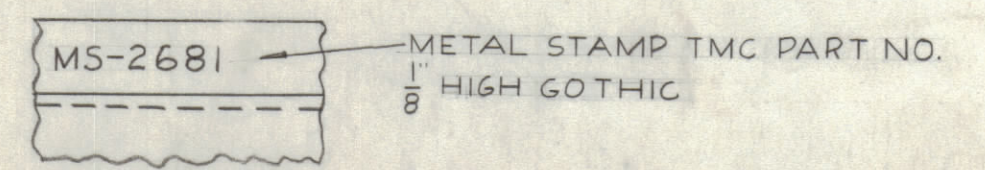


—REAR—

HOLES REQ'D
 A ~ 3/16 (.187) DIA. 15
 B ~ 1/2 (.500) DIA. 8



SECTION-A-A



REF- MS-2516 (REAR DOOR).
 REF-LD-633 (LETTERING, REAR VIEW BOTTOM).
 NOTE-USE STANDARD RACK (MS-2509-3)
 AND MODIFY AS SHOWN.

UNLESS OTHERWISE SPECIFIED
 DIMENSIONS ARE IN INCHES AND INCLUDE
 CHEMICALLY APPLIED OR PLATED FINISHES
 DECIMALS ± .005 FRACTIONS ± 1/64 ANGLES ± 1/2°
 TOLERANCES
 DECIMALS ± .005 FRACTIONS ± 1/64 ANGLES ± 1/2°

| SYM | ZONE | DESCRIPTION | DATE | CH. NO. | DRAFTS | CHECKER | ENG. APP. |
|--|------|-------------|------|--|--------|---------|-----------|
| UNLESS OTHERWISE SPECIFIED: | | | | | | | |
| DIMENSIONS ARE IN INCHES | | | | SCALE | | | |
| TOLERANCES ON FRACTIONS ± 1/64 DECIMALS ± .005 ANGLES ± 1/2° | | | | MAXIMUM ALLOWABLE TOLERANCES HAVE BEEN DETERMINED AND ANY DEVIATIONS WILL BE CAUSE FOR REJECTION. REMOVE ALL BURRS & SHARP EDGES | | | |

| REQ. PER UNIT | ITEM | PART NO. | DESCRIPTION | SYMBOL |
|---------------|------|----------|---|--------|
| | | | THE TECHNICAL MATERIEL CORP. MAMARONECK, NEW YORK | |
| | | | MODIFICATIONS FOR RAK-24 | |
| | | | MATERIAL | |
| | | | TYPE & TEMPER | |
| | | | HEAT TREAT. SPEC. | |
| | | | FINISH & SPEC. NO. | |
| | | | ELEC. DES. APP. | |
| | | | MECH. DES. APP. | |
| | | | SHEET | |
| | | | OF | |

MS-2681