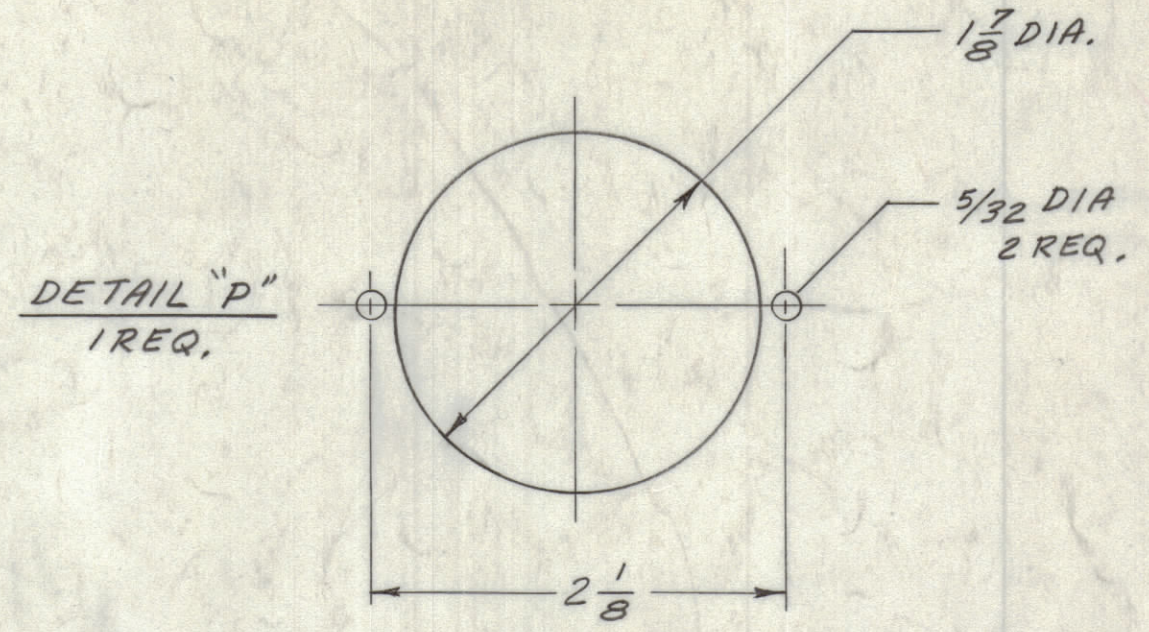
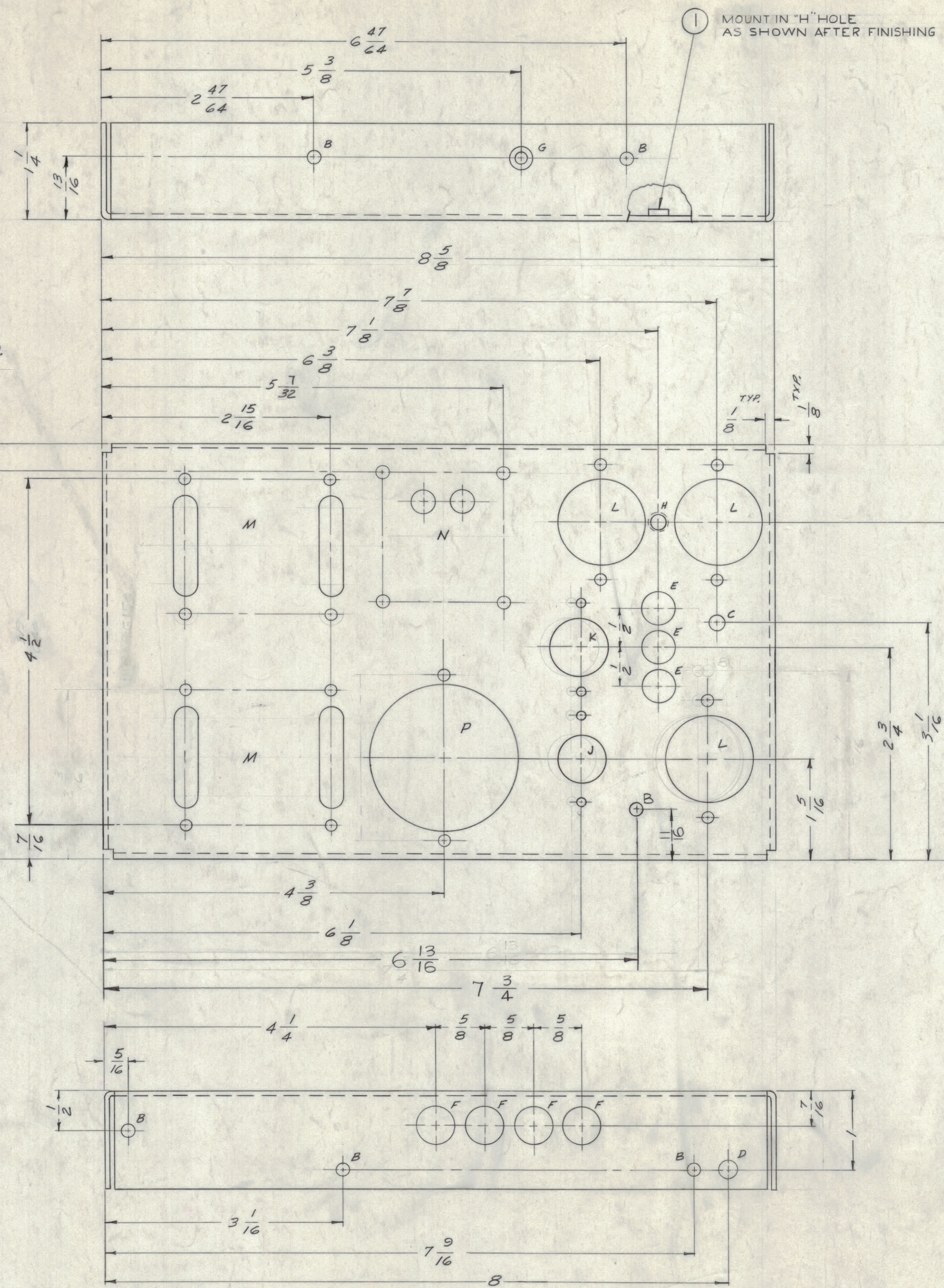
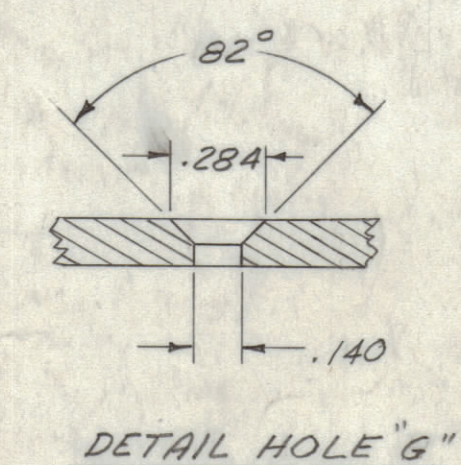
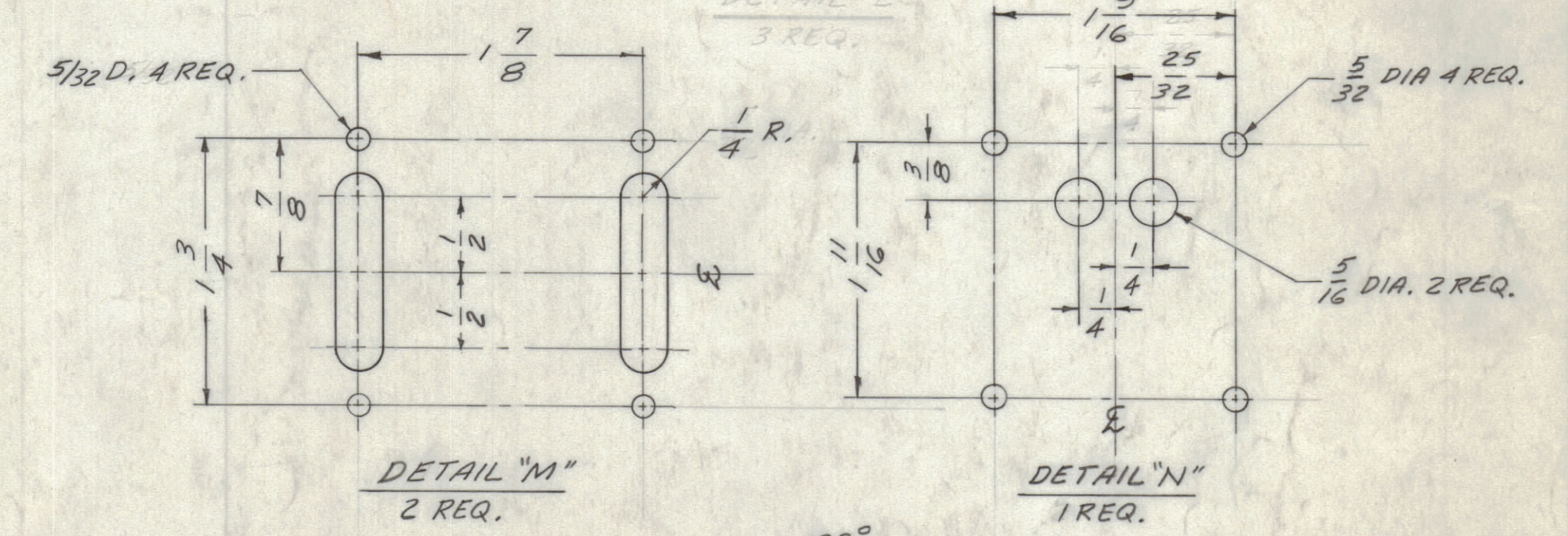
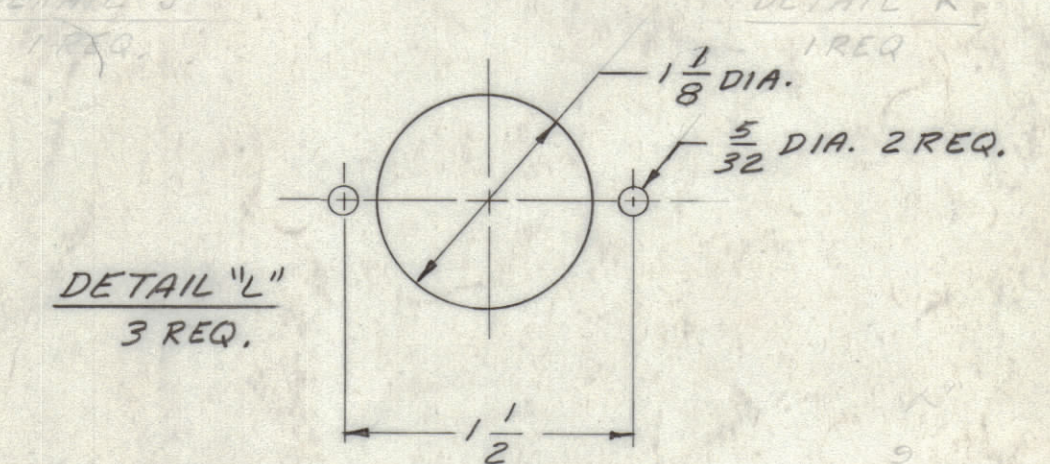
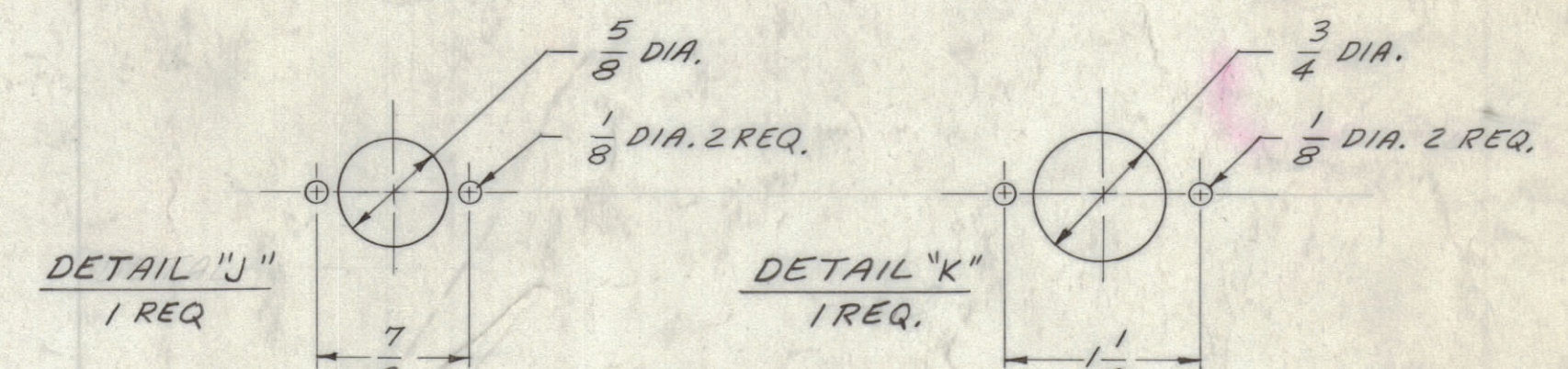


NOTICE TO PERSONS RECEIVING THIS DRAWING  
 THE TECHNICAL MATERIEL CORPORATION claims proprietary right in the material disclosed herein. This drawing is issued in confidence for engineering information only and may not be reproduced or used to manufacture anything shown herein without permission from THE TECHNICAL MATERIEL CORPORATION to the user. This drawing is loaned for mutual assistance and is subject to recall at any time.  
 Property of:  
 THE TECHNICAL MATERIEL CORPORATION  
 MAMARONECK, NEW YORK



LEGEND		
HOLE	DESCRIPTION	REQ.
A	5/32 DIA.	3
B	11/64 DIA.	8
C	13/64 DIA.	1
D	1/4 DIA.	1
E	7/16 DIA.	3
F	1/2 DIA.	4
G	DRILL & C'SINK FOR G-32 (SEE DETAIL 1)	1
H	.191-.194 DIA	1



NOTES:  
 1. USE MATERIAL THICKNESS FOR MAX. RADIUS ON ALL BENDS UNLESS OTHERWISE SPECIFIED  
 2. MOUNT INSERTS AFTER FINISHING (ITEM 1)

UNLESS OTHERWISE SPECIFIED	
DIMENSIONS ARE IN INCHES AND INCLUDE CHEMICALLY APPLIED OR PLATED FINISHES	TOLERANCES
DECIMALS ± .05 ± .01 ± .005	FRACTIONS ± 1/64 ± 1/32 ± .005

SYM	ZONE	DESCRIPTION	DATE	CH. NO.	DRAFTS	CHECKER	ENG. APP.
C	A3	ADDED REF: LD-987	3-20-64	11069	A.M.		
B	D7	(B) HOLE RELOCATED	2-23-62	6439	E.L.		
A	D3	1/4" WAS 5/32" ON DETAIL "M"	10-31-61	5780	E.E.		

UNLESS OTHERWISE SPECIFIED:  
 DIMENSIONS ARE IN INCHES  
 TOLERANCES ON FRACTIONS ± 1/64 DECIMALS ± .005 ANGLES ± 1/2°

SCALE  
 MAXIMUM ALLOWABLE TOLERANCES HAVE BEEN DETERMINED AND ANY DEVIATIONS WILL BE CAUSE FOR REJECTION. REMOVE ALL BURRS & SHARP EDGES

REF: LD-987

REQ. ITEM	PART NO.	DESCRIPTION	SYMBOL
1	NT-129-632-4	NUT, SWAGE TYPE	H
STOCK SIZE			
MATERIAL			
THE TECHNICAL MATERIEL CORP. MAMARONECK, NEW YORK			
CHASSIS, ELECTRICAL EQUIPMENT, REGULATOR			
MATERIAL			
ALUMINUM			
TYPE & TEMPER			
5052-H32			
HEAT TREAT. SPEC.			
5404 YEL IRIDITE			
FINISH & SPEC. NO.			
DRAWN			
W.S. AID			
CHECKED			
RK			
ELEC. DES. APP.			
MECH. DES. APP.			
FINAL APPROVAL			
MS-2685			
SHEET OF			

REQ. PER UNIT	MODEL	SECTION	ASSY. NO.	DATE	USED ON
1	585-1	PWR SUPPLY	A-2209-1	10-16-61	

MS-2685