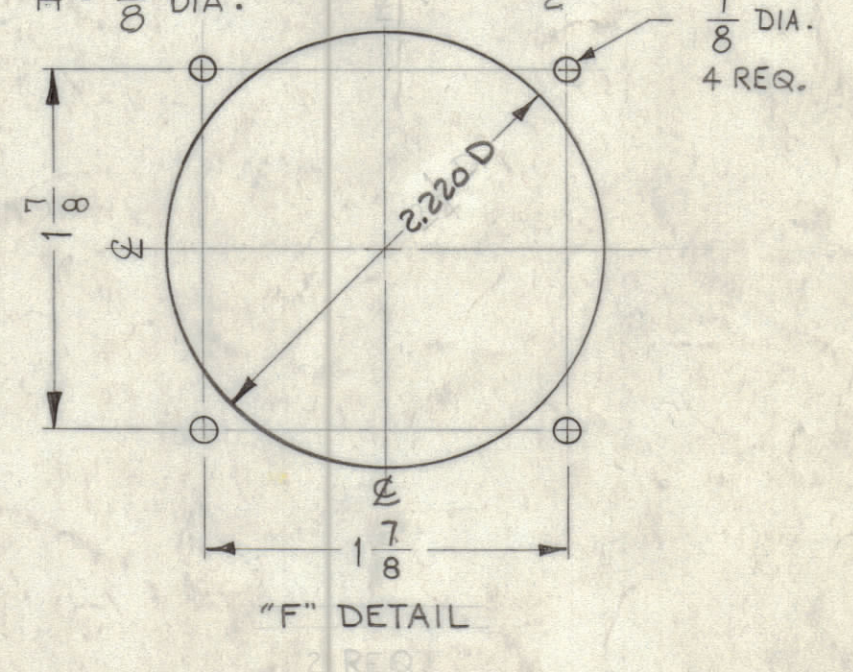
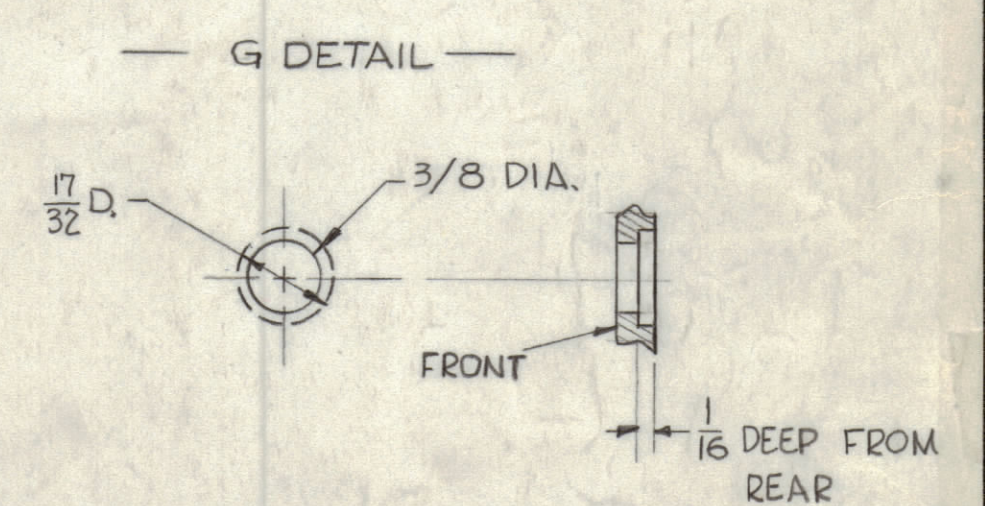
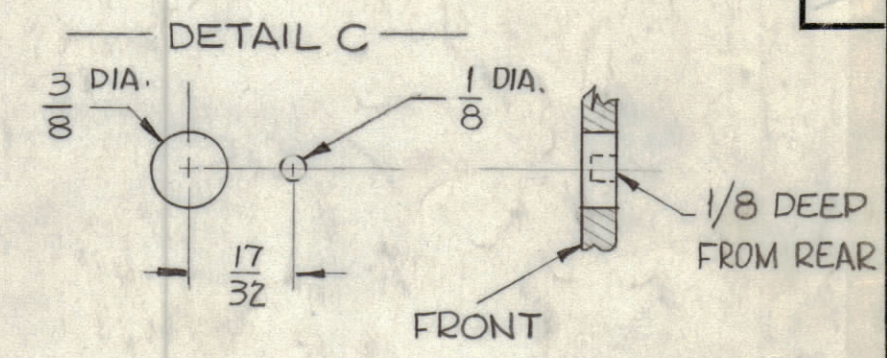


- A - $\frac{11}{64}$ DIA. 7 REQ.
- B - $\frac{7}{32}$ DIA. 4 "
- C - SEE DETAIL 13 "
- D - $\frac{15}{32}$ DIA. 2 "
- E - .076 DIA. 8 "
- F - SEE DETAIL 2 "
- G - SEE DETAIL 1 "
- H - $\frac{3}{8}$ DIA. 2 "



METAL STAMP TMC PART ON REAR AS SHOWN $\frac{1}{8}$ HIGH GOTHIC. W/LATEST REVISION LETTER.



MACHINING~
 1~ LATERAL BOW OF PANEL MUST BE KEPT TO .031 TOLERANCE.
 2~ MILL ALL EDGES.
 3~ HOLES MUST BE DRILLED.
 4~ PANEL MUST BE FREE OF ALL MACHINING MARKS GOUGES & SCRATCHES.
 IF NECESSARY SAND FRONT OF PANEL WITH NO. 120 GRIT SANDPAPER.

FINISH~
 S404 YELLOW IRIDITE
 S114 ZINC CHROMATE PRIMER FRONT &
 S115 TMC SMOOTH GREY ENAMEL EDGES ONLY.

NOTICE TO PERSONS RECEIVING THIS DRAWING
 THE TECHNICAL MATERIEL CORPORATION claims proprietary right in the material disclosed hereon. This drawing is issued in confidence for engineering information only and may not be reproduced or used to manufacture anything shown hereon without permission from THE TECHNICAL MATERIEL CORPORATION to the user. This drawing is loaned for mutual assistance and is subject to recall at any time.
 Property of:
 THE TECHNICAL MATERIEL CORPORATION
 MAMARONECK, NEW YORK

REF: LD-989 (8) 2SHEETS

UNLESS OTHERWISE SPECIFIED	
DIMENSIONS ARE IN INCHES AND INCLUDE CHEMICALLY APPLIED OR PLATED FINISHES	
DECIMALS	FRACTIONS
± .05	± 1/4
± .01	± 1/8
± .005	± 1/32
TOLERANCES	
ANGLES	± 1/2°
± 1/2°	± 1/2°

SYM	ZONE	DESCRIPTION	DATE	CH. NO.	DRAFTS	CHECKER	ENG. APP.
B	F2	DET 'F', 2.220 DIA HOLE WAS 2/4 DIA	2-10-65	13420			
A	H	DEL: 29/32 DIM. CHG: A' HOLE FR: 5/32 TO 1/4	3-23-64	11059	AM		
UNLESS OTHERWISE SPECIFIED:		SCALE DO NOT SCALE					
DIMENSIONS ARE IN INCHES		MAXIMUM ALLOWABLE TOLERANCES HAVE BEEN DETERMINED AND ANY DEVIATIONS WILL BE CAUSE FOR REJECTION. REMOVE ALL BURRS & SHARP EDGES					
TOLERANCES ON		A					
FRACTIONS ± 1/64		DECIMALS ± .005		ANGLES ± 1/2°			

REQ. PER UNIT	MODEL	SECTION	ASSY. NO.	DATE	FINISH & SPEC. NO.	ELEC. DES. APP.	MECH. DES. APP.	SHEET	OF
1	SBS-1			10-10-61				MS-2690	B
USED ON						MATERIAL			
2024-T3						ALUMINUM			
TYPE & TEMPER						HEAT TREAT. SPEC.			
SEE NOTE						DRAWN			
						CHECKED			
						FINAL APPROVAL			

MS-2690 B