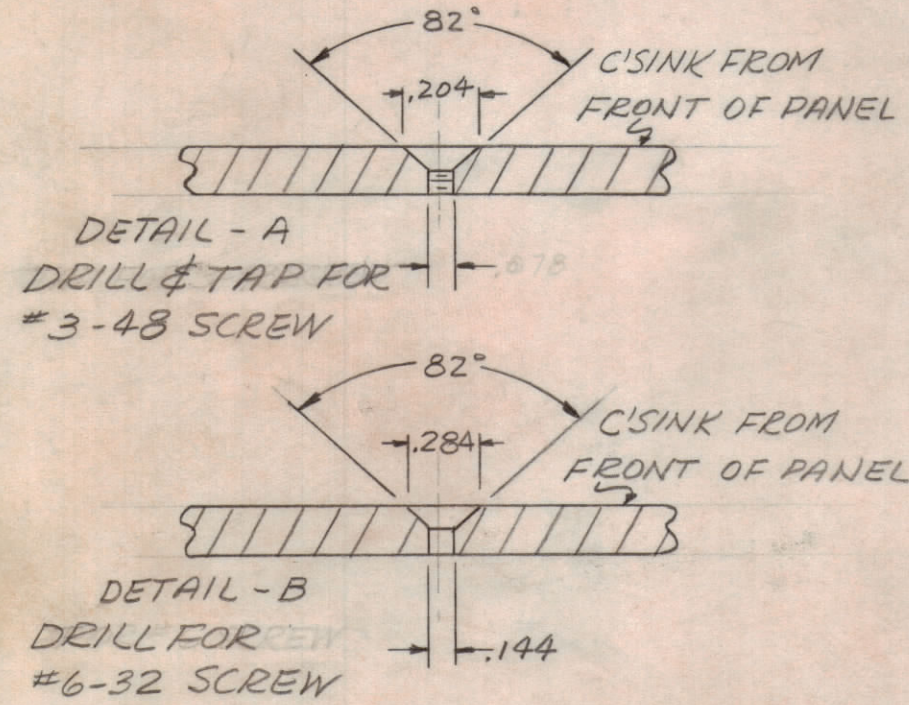


METAL STAMP TMC PART NO. 1/8 HIGH GOTHIC REAR OF PANEL



- NOTES -
- 1- LATERAL BOW OF PANEL MUST BE KEPT TO .031 TOL.
  - 2- HOLES MUST BE DRILLED.
  - 3- MILL ALL EDGES.
  - 4- ALL THREADED HOLES & HOLE DIA. MUST BE HELD AFTER ETCHING.
  - 5- ALL "B" HOLES TO BE HELD TO DECIMAL TOL. AS SHOWN.
  - 6- ALL "A" HOLES TO BE HELD TO FRACTIONAL TOL. AS SHOWN.

- HOLES ~
- A - SEE DETAIL 12 REQ'D.
  - B - SEE DETAIL 12 REQ'D.
  - C - 13/16 DIA. 12 REQ'D.
  - D - #47 DRILL 3 REQ'D.
  - E - SLOTS, 1/4 X 13/32 4 REQ'D.

FINISH - FRONT & EDGES ONLY  
 S404 - YELLOW IRIDITE  
 S114 - ZINC CHROMATE PRIMER  
 S115 - SMOOTH GREY ENAMEL

UNLESS OTHERWISE SPECIFIED DIMENSIONS ARE IN INCHES AND INCLUDE CHEMICALLY APPLIED OR PLATED FINISHES

DECIMALS	FRACTIONS
.X ± .05	± 1/64
.XX ± .01	ANGLES ± 0° 30'
.XXX ± .005	

TOLERANCES

SYM	ZONE	DESCRIPTION	DATE	CH. NO.	DRAFTS	CHECKER	ENG. APP.
UNLESS OTHERWISE SPECIFIED:							
DIMENSIONS ARE IN INCHES			SCALE				
TOLERANCES ON			MAXIMUM ALLOWABLE TOLERANCES HAVE BEEN DETERMINED AND ANY DEVIATIONS WILL BE CAUSE FOR REJECTION. REMOVE ALL BURRS & SHARP EDGES				
FRACTIONS ± 1/64		DECIMALS ± .005	ANGLES ± 1/2°				

1	SPP-4SP6			10-10-61
REQ. PER UNIT	MODEL	SECTION	ASS'Y. NO.	DATE

REQ. ITEM	PART NO.	DESCRIPTION	SYMBOL
	3/16	ALUMINUM	
2024-T3		THE TECHNICAL MATERIEL CORP. MAMARONECK, NEW YORK	
SEE NOTES		PANEL, FRONT	
TYPE & TEMPER	HEAT TREAT. SPEC.	ab	
		DRAWN	CHECKED
		FINAL APPROVAL	
		MS-2691	
FINISH & SPEC. NO.		ELEC. DES. APP.	MECH. DES. APP.
		SHEET OF	