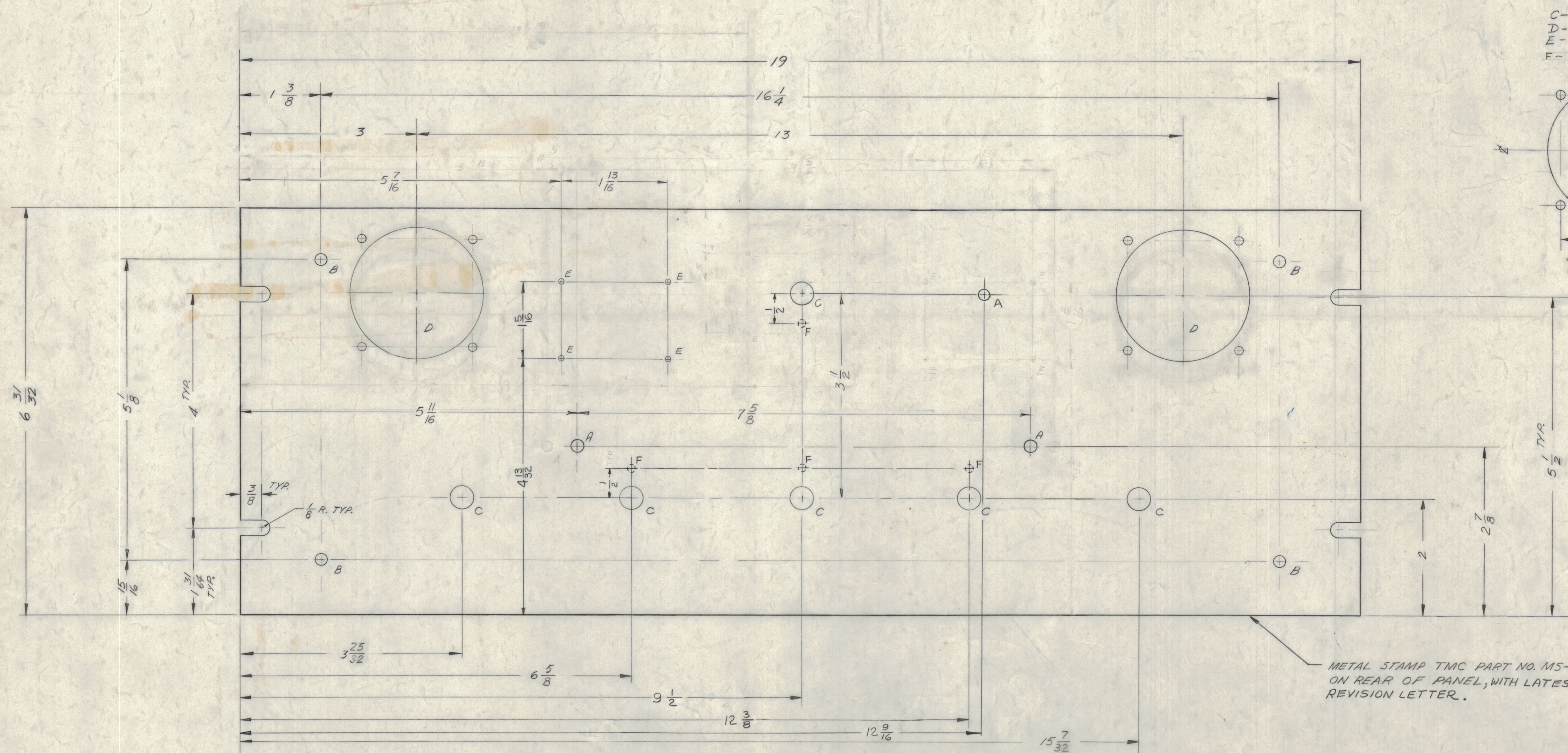
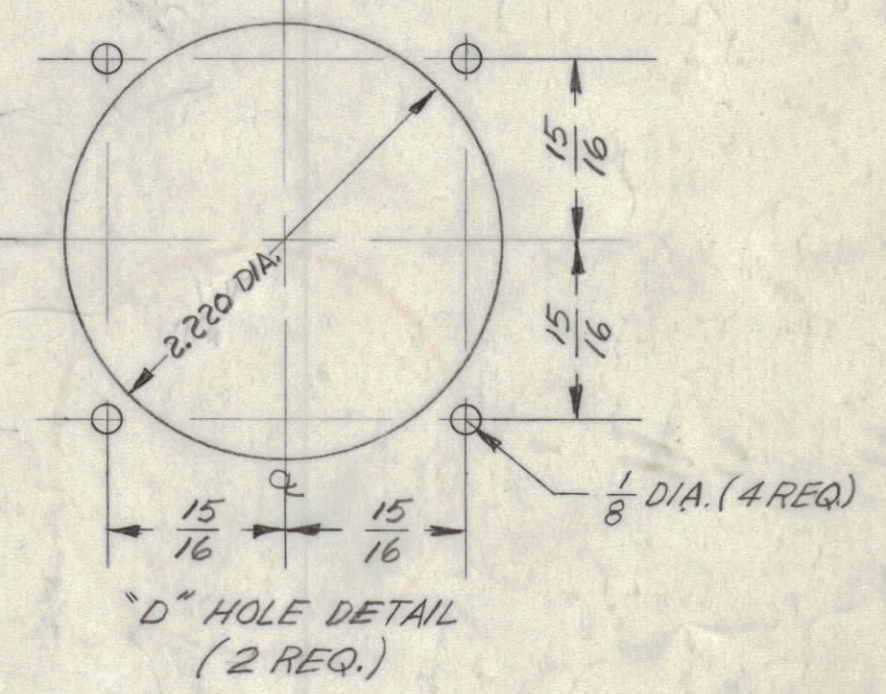


**HOLES:**  
 A - 1/64 DIA. 3 REQ.  
 B - 7/32 DIA. 4 REQ.  
 C - 3/8 DIA. 6 REQ.  
 D - SEE DETAIL 2 REQ.  
 E - 3/16 DIA. 4 REQ.  
 F - 1/8 DIA., 1/8 DR FROM REAR OF PANEL - 4 REQ.



METAL STAMP TMC PART NO. MS-2695- ON REAR OF PANEL, WITH LATEST REVISION LETTER.

**MACHINING**  
 1. LATERAL BOW OF PANEL MUST BE KEPT TO .031 TOLERANCE.  
 2. MILL ALL EDGES.  
 3. HOLES MUST BE DRILLED.  
 4. PANEL MUST BE FREE OF ALL MACHINING MARKS, GOUGES & SCRATCHES. IF NECESSARY SAND FRONT OF PANEL WITH NO.120 GRIT SANDPAPER.

**FINISH**  
 S404 YELLOW IRIDITE  
 S114 ZINC CHROMATE PRIMER } FRONT & EDGES ONLY  
 S115 TMC SMOOTH GRAY ENAMEL }

**NOTICE TO PERSONS RECEIVING THIS DRAWING**  
 THE TECHNICAL MATERIEL CORPORATION claims proprietary right in the material disclosed herein. This drawing is issued in confidence for engineering information only and may not be reproduced or used in manufacture anything shown hereon without permission from THE TECHNICAL MATERIEL CORPORATION to the user. This drawing is loaned for mutual assistance and is subject to recall at any time.  
 Property of:  
 THE TECHNICAL MATERIEL CORPORATION  
 MAMARONECK, NEW YORK

UNLESS OTHERWISE SPECIFIED DIMENSIONS ARE IN INCHES AND INCLUDE CHEMICALLY APPLIED OR PLATED FINISHES	
DECIMALS X 25 .005 X 10 .01 XXX .002	FRACTIONS ± 1/64 ANGLES ± 9' 30"
TOLERANCES	

C	F2	DET. "D", 2.220 DIA HOLE WAS 2 1/4 DIA	2-10-65	13420	AM	9/16	9/16
B	E5	(1) "A" HOLE ADDED	8-12-64	12119	MB	9/16	9/16
A	F2	(4) "F" HOLES ADDED	3-27-62	6547	MB	9/16	9/16
SYM	ZONE	DESCRIPTION	DATE	CH. NO.	DRAFTS	CHECKER	ENG. APP.
UNLESS OTHERWISE SPECIFIED:			SCALE DO NOT SCALE				
DIMENSIONS ARE IN INCHES			MAXIMUM ALLOWABLE TOLERANCES HAVE BEEN DETERMINED AND ANY DEVIATIONS WILL BE CAUSE FOR REJECTION. REMOVE ALL BURRS & SHARP EDGES				
TOLERANCES ON			A				
FRACTIONS ± 1/64			DECIMALS ± .005				
			ANGLES ± 1/2°				

REF: LD-1045

REQ. PER UNIT	MODEL	SECTION	ASSY. NO.	DATE	TYPE & TEMPER	HEAT TREAT. SPEC.	FINISH & SPEC. NO.
1	HFI-1			10-10-61	2024-T3		SEE NOTE
USED ON							
MATERIAL				MATERIAL			
ALUMINUM				ALUMINUM			
STOCK SIZE				STOCK SIZE			
3/16				3/16			
PART NO.				PART NO.			
M. GELLMAN				M. GELLMAN			
DESCRIPTION				DESCRIPTION			
THE TECHNICAL MATERIEL CORP.				THE TECHNICAL MATERIEL CORP.			
MAMARONECK, NEW YORK				MAMARONECK, NEW YORK			
SYMBOL				SYMBOL			
MS-2695 C				MS-2695 C			
DRAWN				DRAWN			
WA				WA			
CHECKED				CHECKED			
R.P.S.				R.P.S.			
MECH. DES. APP.				MECH. DES. APP.			
KLEC.				KLEC.			
SHEET				SHEET			
OF				OF			