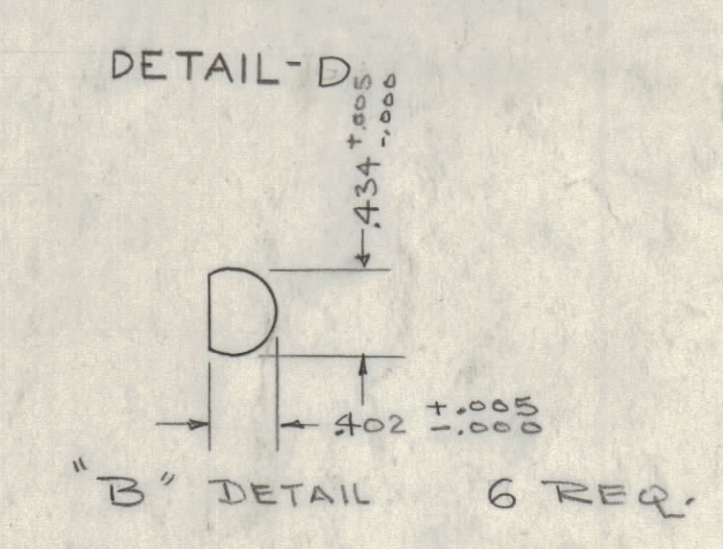
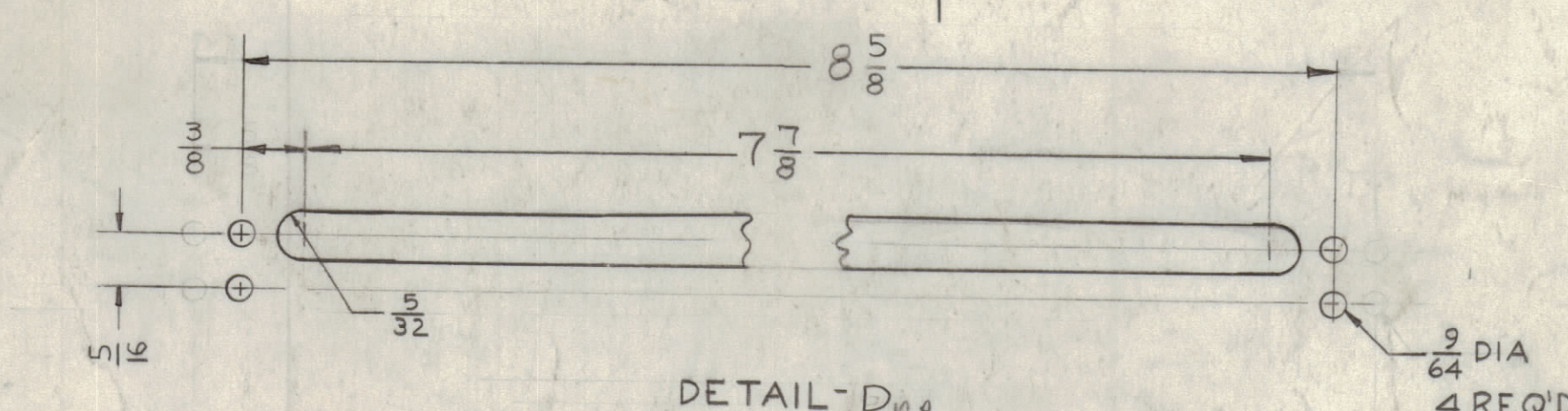
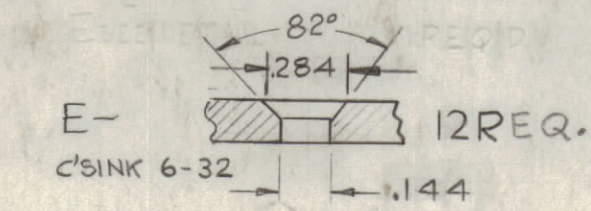


**NOTICE TO PERSONS RECEIVING THIS DRAWING**

THE TECHNICAL MATERIEL CORPORATION claims proprietary right in the material disclosed herein. This drawing is issued in confidence for engineering information only and may not be reproduced or used to manufacture anything shown herein without permission from THE TECHNICAL MATERIEL CORPORATION to the user. This drawing is loaned for mutual assistance and is subject to recall at any time.

Property of:  
THE TECHNICAL MATERIEL CORPORATION  
MAMARONECK, NEW YORK

- HOLES~**
- A-  $\frac{5}{32}$  DIA. 17 REQ.
  - B- SEE DETAIL 6 REQ.
  - C-  $\frac{1}{4}$  DIA. 3 REQ.
  - D- SEE DETAIL 1 REQ.
  - E-  $\frac{9}{64}$  DIA. 12 REQ.
  - F-  $\frac{1}{2}$  DIA. 1 REQ.

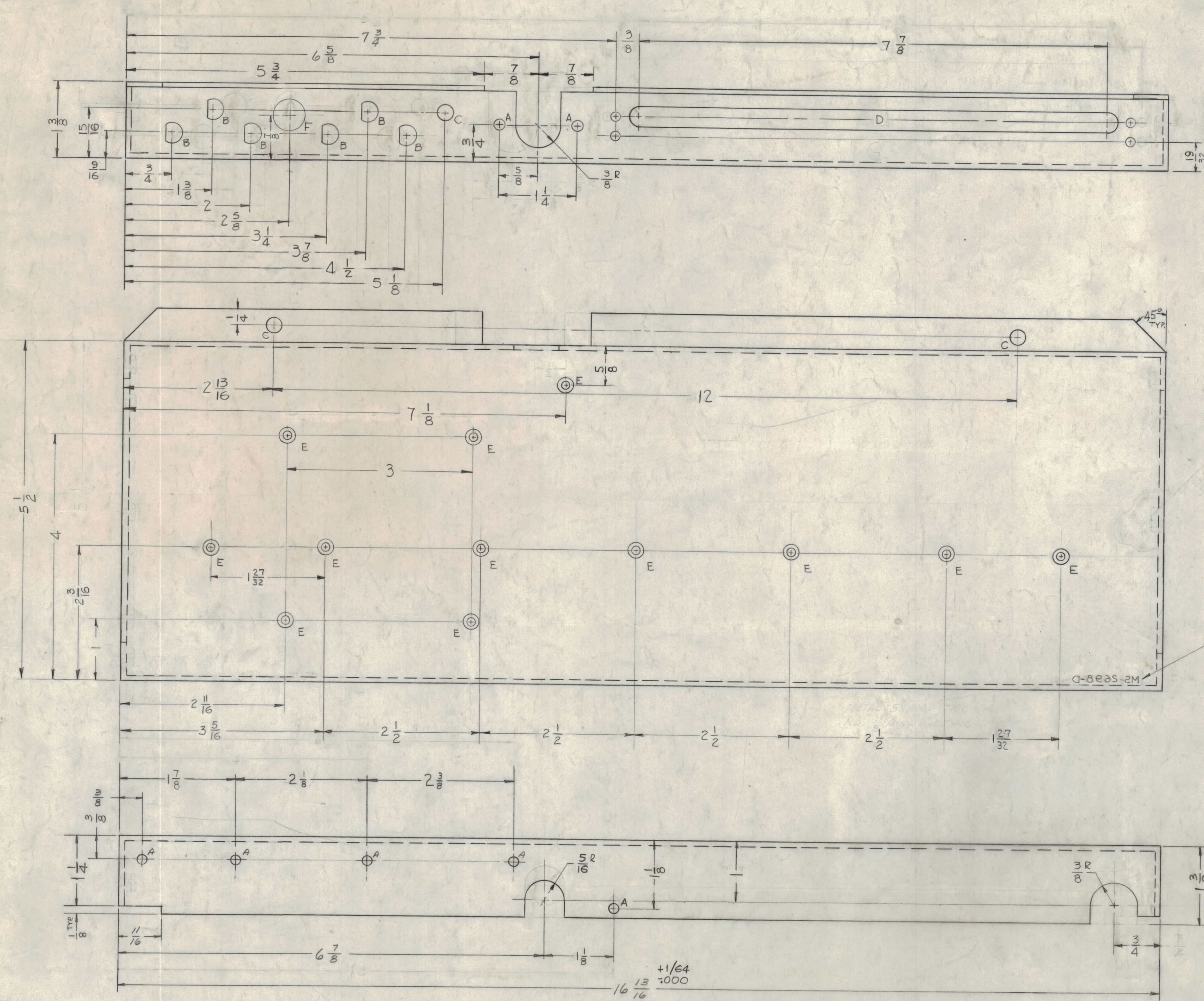


1. MOUNT ITEM IN ALL 'B' HOLES AS SHOWN AFTER FINISHING

METAL STAMP TMC PART  
1/8 HIGH GOTHIC AS SHOWN ON REAR

OPPOSITE SIDE  
IDENTICAL

USE MATERIAL THICKNESS FOR MAX. RADIUS  
ON ALL BENDS UNLESS OTHERWISE SPECIFIED



D	69	1	⊕ HOLE WAS ⊙ HOLE	1-9-62	6162	YLS		
C	62 DIA	3	E HOLES ADDED, 6-32CSK WAS 4-40CSK	11-21-61	5951	YLS		
B	65	1	ON BOTTOM VIEW DIM. 3/4 WAS 1/2	11-16-61	5879	GDL		
A	68	1	⊕ 'E' HOLES ADDED	10-21-61	5192	GA		

UNLESS OTHERWISE SPECIFIED:  
DIMENSIONS ARE IN INCHES  
TOLERANCES ON  
FRACTIONS ± 1/64  
DECIMALS ± .005  
ANGLES ± 1/2°

MAXIMUM ALLOWABLE TOLERANCES HAVE BEEN DETERMINED AND ANY DEVIATIONS WILL BE CAUSE FOR REJECTION. REMOVE ALL BURRS & SHARP EDGES

REF: LD-1005

REQ. ITEM	PART NO.	DESCRIPTION	SYMBOL
1	SBS-1	REAR APRON INTERCONNECT SECTION	
MATERIAL		ALUMINUM	
STOCK SIZE		.081 THK.	
TYPE & TEMPER		5052-H32	
HEAT TREAT. SPEC.		S404-YEL-IRIDITE	
FINISH & SPEC. NO.		MS-2698	

DEFIANCE NO. 1025 2812

MS-2698