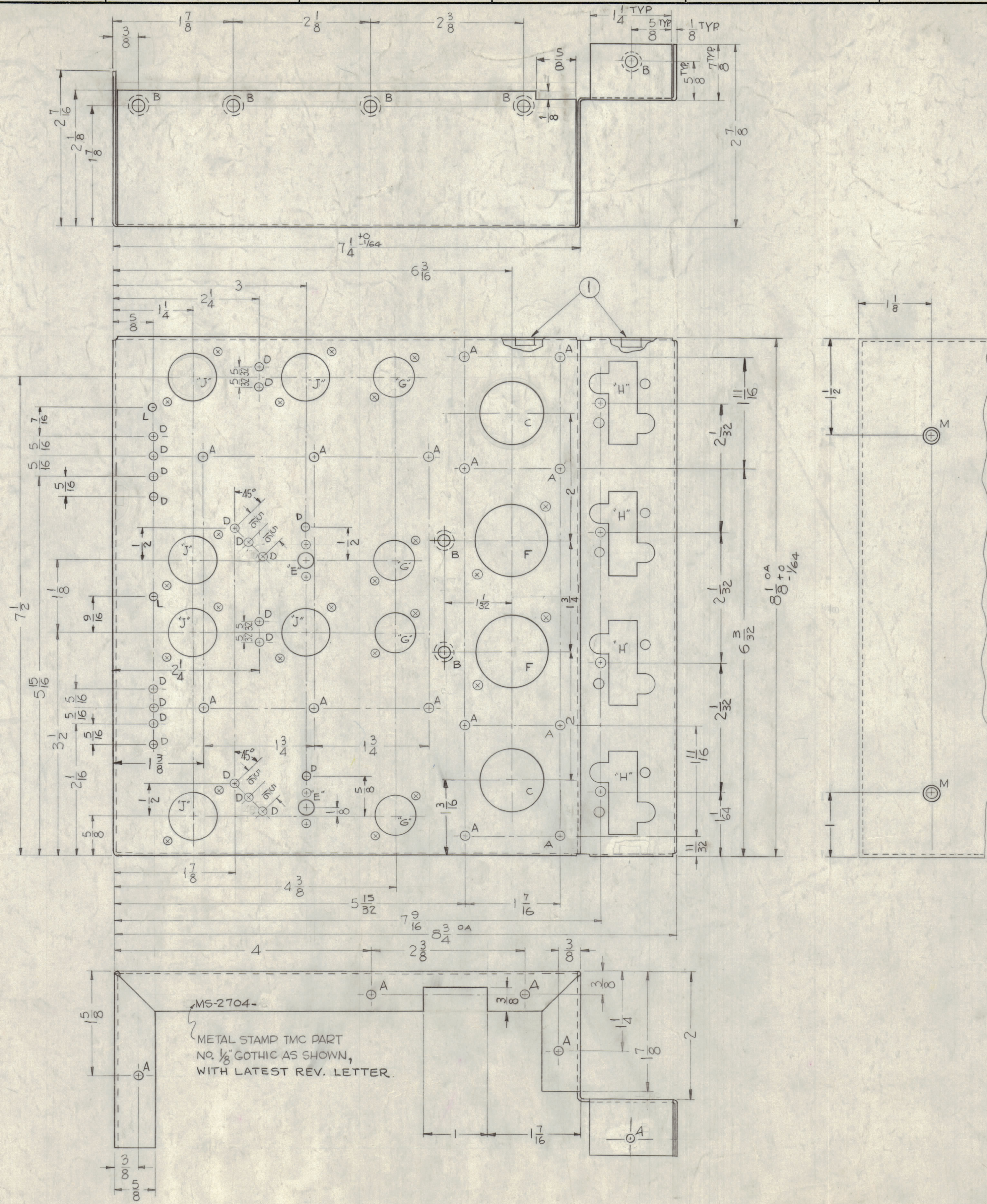
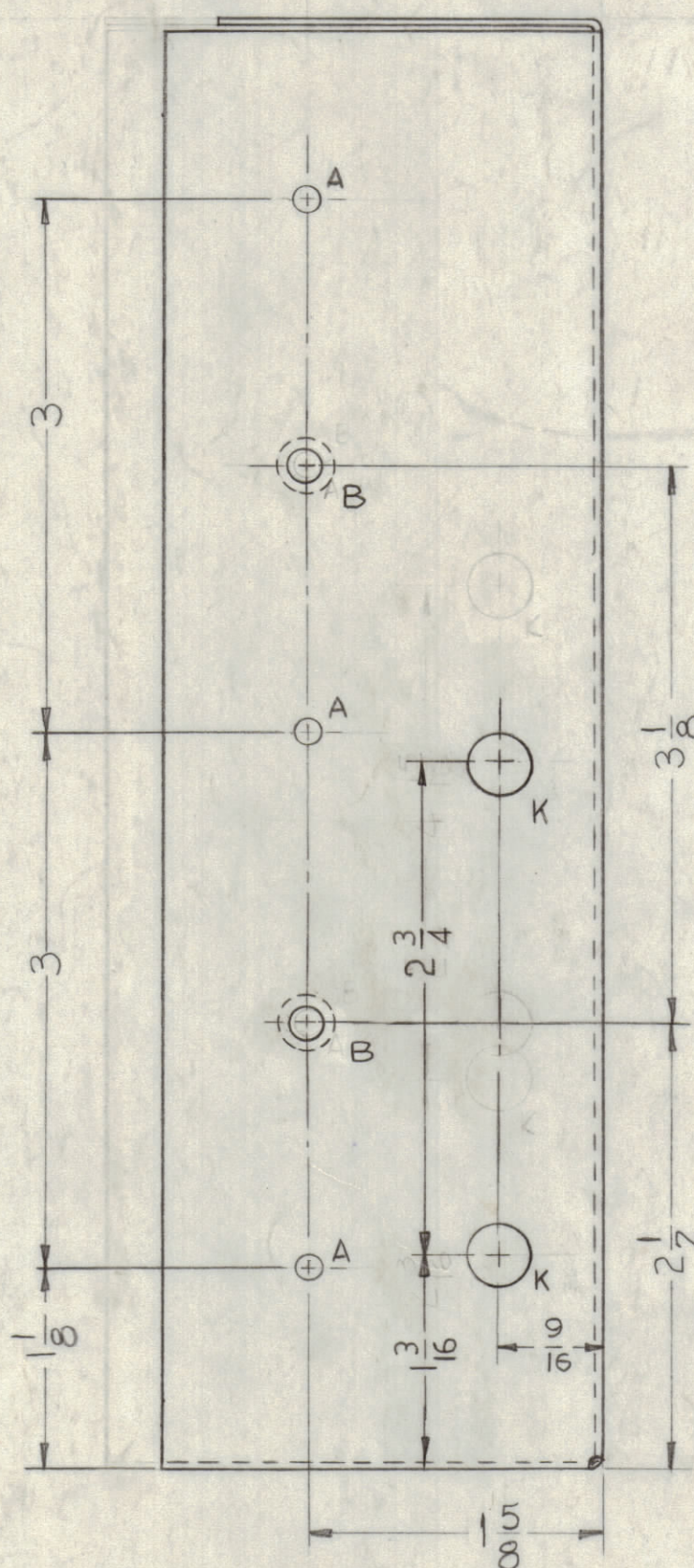


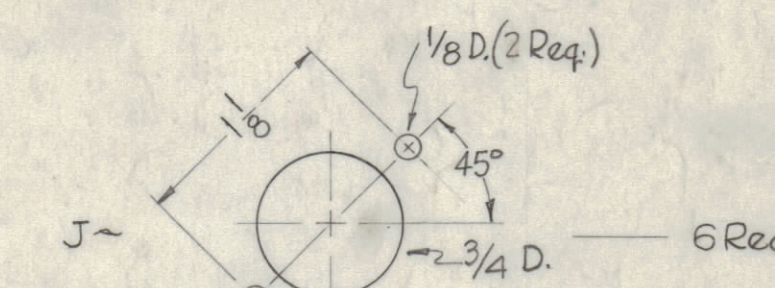
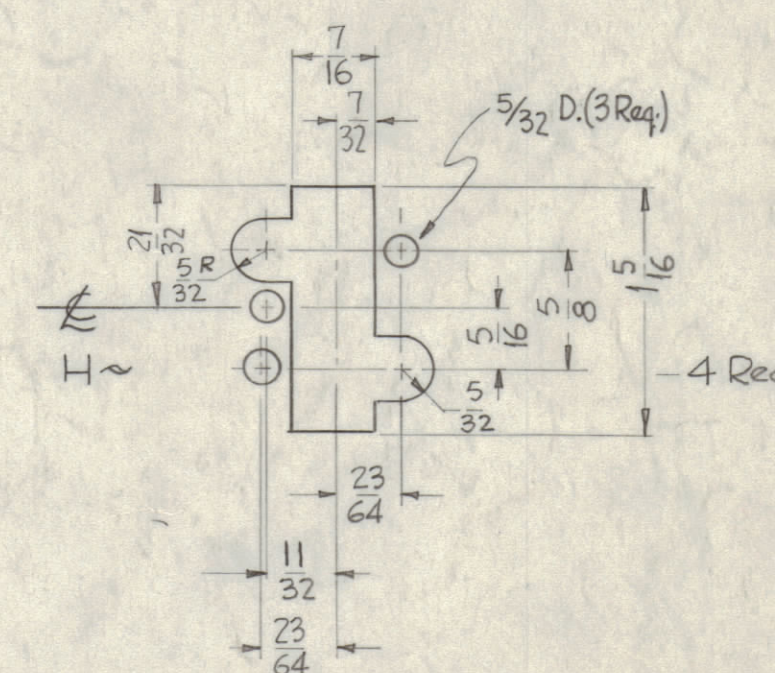
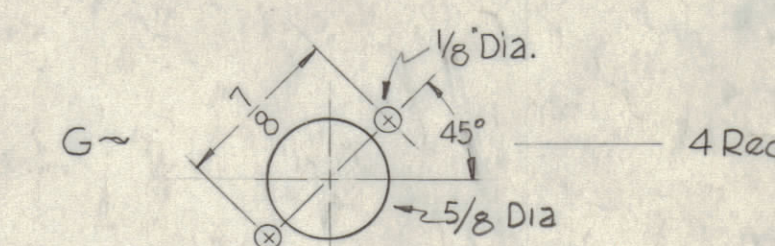
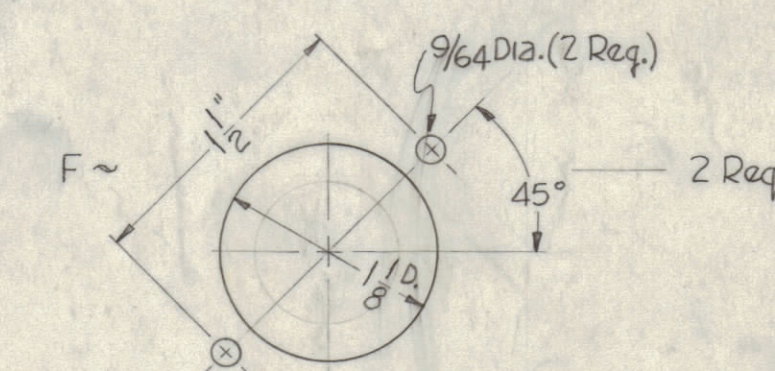
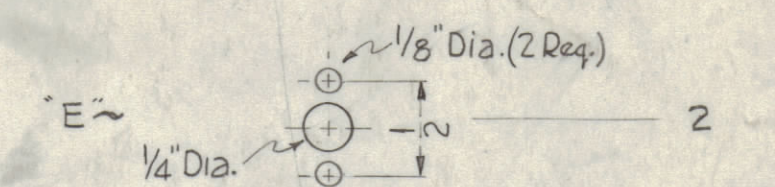
NOTICE TO PERSONS RECEIVING THIS DRAWING

THE TECHNICAL MATERIEL CORPORATION claims proprietary right in the material disclosed hereon. This drawing is issued in confidence for engineering information only and may not be reproduced or used to manufacture anything shown hereon without permission from THE TECHNICAL MATERIEL CORPORATION to the user. This drawing is loaned for mutual assistance and is subject to recall at any time.

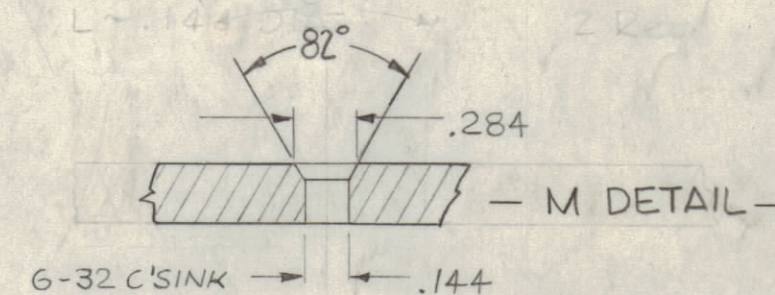
Property of:
THE TECHNICAL MATERIEL CORPORATION
MAMARONECK, NEW YORK



HOLES	REQ.
A ~ 5/32 DIA.	22
B ~ 1/16 TO MOUNT NT-129-632-4	9
C ~ 1" DIA.	2
D ~ 1/8 "	20



K ~ 3/8 DIA — 2 REQ
L ~ .158 DIA — 2 REQ
M ~ SEE DETAIL — 2 REQ



USE MATERIAL THICKNESS FOR MAX. RADIUS ON ALL BENDS UNLESS OTHERWISE SPECIFIED

MOUNT INSERTS AFTER FINISHING

REF: LD-1001

DECIMALS	FRACTIONS
± .05	± 1/64
± .01	± .005
± .005	± 30°

SYM	ZONE	DESCRIPTION	DATE	CH. NO.	DRAFTS	CHECKER	ENG. APP.
F	B3	B HOLE WAS CHANGED TO AN A HOLE	12/16	15299	RMC	QCB	
E		CLERICAL CHANGE	9/21/64		AB		
D	E, D, 3/6	4" Holes changed to 1/8" holes. IT-1 WAS 6 REQ. IT-2 WAS 25 REQ.	8/31/64	12188	AB		
C	C2	7" HOLES WERE .144 DIA	4-30-63	8841			
B	G8	2-7/16 DIM. WAS 2-3/4 ON TOP VIEW	1-19-62	6184	EF		
A	D3	Dim. 1 3/16 WAS 2 3/16, 2 3/4 WAS 4 15/16	11-29-61	5951	EF		
		DB-603 2 (A) Holes Added; 2 (W) Holes Added; 1 X 3/8 Output Added					

UNLESS OTHERWISE SPECIFIED:
DIMENSIONS ARE IN INCHES
TOLERANCES ON FRACTIONS ± 1/64 DECIMALS ± .005 ANGLES ± 1/2°

SCALE: A
MAXIMUM ALLOWABLE TOLERANCES HAVE BEEN DETERMINED AND ANY DEVIATIONS WILL BE CAUSE FOR REJECTION. REMOVE ALL BURRS & SHARP EDGES

REQ. ITEM	PART NO.	DESCRIPTION	SYMBOL
9	NT-129-632-4	Nut, Round Swage Type	B
MATERIAL			
.064 STOCK SIZE			
ALUMINUM			
THE TECHNICAL MATERIEL CORP. MAMARONECK, NEW YORK			
CHASSIS, ELECTRICAL EQUIPMENT AUDIO			
MATERIAL			
5052-H32			
DRAWN: [Signature] CHECKED: [Signature] FINAL APPROVAL: [Signature]			
TYPE & TEMPER: 5-404 Yellow Iridite HEAT TREAT. SPEC.			
FINISH & SPEC. NO.			
ELEC. DES. APP. MECH. DES. APP. SHEET OF			

MS-2704