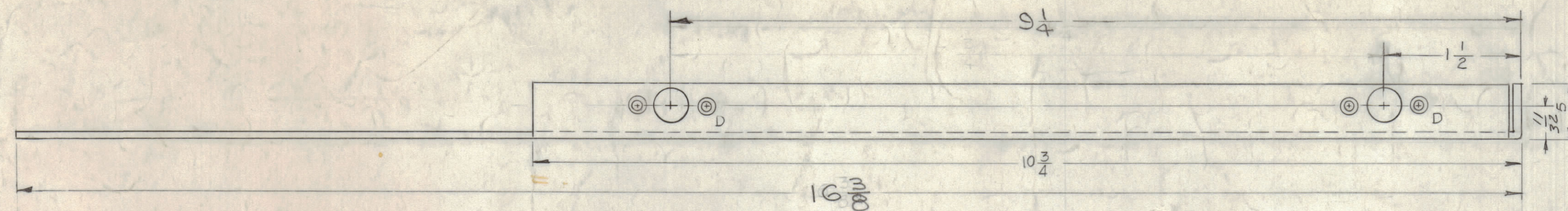


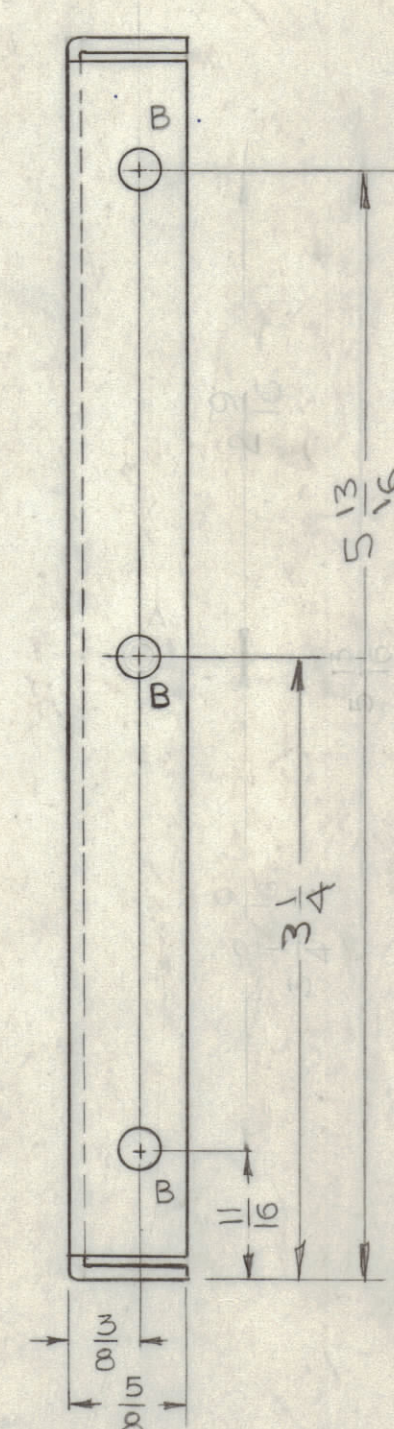
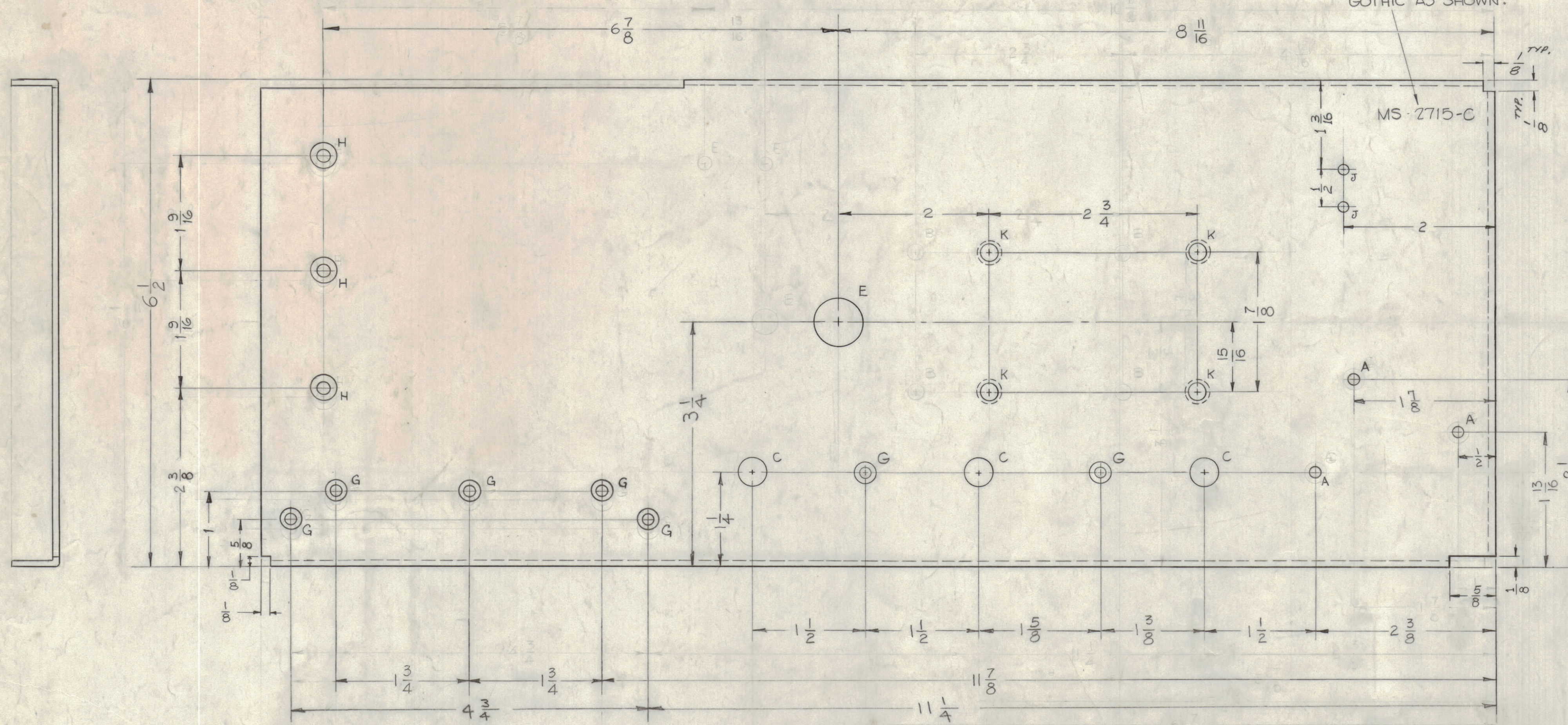
NOTICE TO PERSONS RECEIVING THIS DRAWING

THE TECHNICAL MATERIEL CORPORATION claims proprietary right in the material disclosed hereon. This drawing is issued in confidence for engineering information only and may not be reproduced or used to manufacture anything shown hereon without permission from THE TECHNICAL MATERIEL CORPORATION to the user. This drawing is loaned for mutual assistance and is subject to recall at any time.

Property of:
THE TECHNICAL MATERIEL CORPORATION
MAMARONECK, NEW YORK



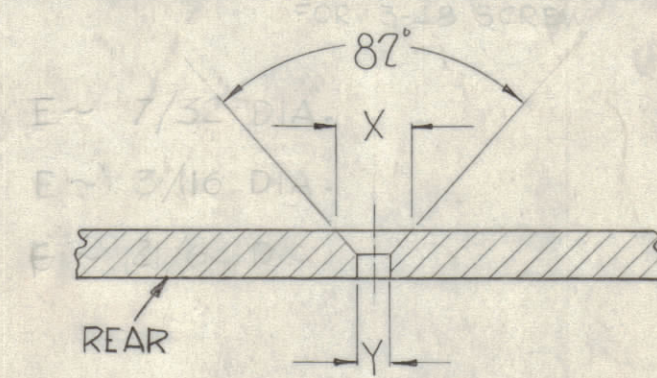
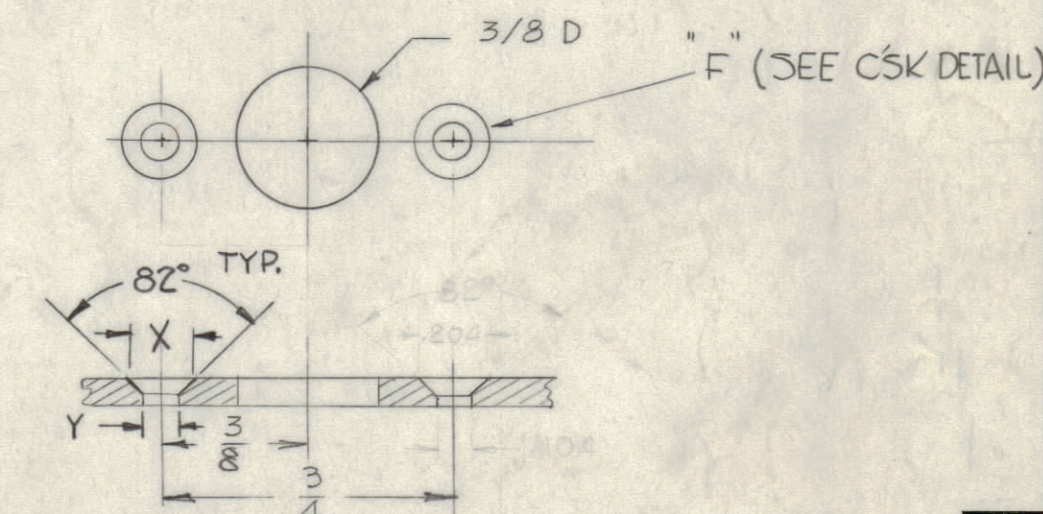
METAL STAMP TMC PART NO. 1/8" HIGH
GOTHIC AS SHOWN.



HOLES

- A - 5/32 DIA. 3 REQ.
- B - 7/32 DIA. 3 REQ.
- C - 3/8 DIA. 3 REQ.
- D - SEE DETAIL 5 REQ.
- E - 3/4 DIA. 1 REQ.
- F - P/O DETAIL "D"
- G - SEE COUNTERSINK DETAIL
- H - SEE COUNTERSINK DETAIL
- J - 1/8 DIA. 2 REQ.
- K - SEE COUNTERSINK DETAIL

"D" DETAIL



HOLE	"X"	"Y"	REQ.
F	.204	.104	10
G	.284	.144	7
H	.337	.169	3
K	.390	.196	4

COUNTERSINK DETAIL

USE MATERIAL THICKNESS FOR MAX. RADIUS
ON ALL BENDS UNLESS OTHERWISE SPECIFIED

UNLESS OTHERWISE SPECIFIED	
DIMENSIONS ARE IN INCHES AND INCLUDE CHEMICALLY APPLIED OR PLATED FINISHES	
DECIMALS	FRACTIONS
± .005	± 1/64
± .01	± 1/32
± .003	± 1/64
ANGLES ± 30°	

SYM	ZONE	DESCRIPTION	DATE	CH. NO.	DRAFTS	CHECKER	ENG. APP.
E	E4	"B" HOLE WAS AN "A" HOLE	12-2-64	13011	PZ		
D	D10	1/8 X 1/8 NOTCH ADDED	4/16/65	10152	STB		
C	EG-65	ADD HOLES WIRE (HOLE) WAS 5/8 DIA.	11-15-62	8184	IS		
B	EG-65	ADD HOLES WIRE (HOLE) WAS 5/8 DIA. CUTOUT ADD AT CORNER	12-9-61	6037	SG		
A	EG-65	DIM 3 1/16 WAS 5 1/16, 6 1/16 WAS 5 1/8 - (E) HOLE WAS 21/64 D	11-16-61	5900	G.D.L.		

UNLESS OTHERWISE SPECIFIED:
DIMENSIONS ARE IN INCHES
TOLERANCES ON
FRACTIONS ± 1/64 DECIMALS ± .005 ANGLES ± 1/2°

SCALE
MAXIMUM ALLOWABLE TOLERANCES HAVE BEEN DETERMINED AND ANY DEVIATIONS WILL BE CAUSE FOR REJECTION.
REMOVE ALL BURRS & SHARP EDGES

REQ. PER UNIT	MODEL	SECTION	ASS'Y. NO.	DATE
1	SB5-1			10-13-61

REQ. ITEM	PART NO.	DESCRIPTION	SYMBOL
	.081	THE TECHNICAL MATERIEL CORP. MAMARONECK, NEW YORK	
STOCK SIZE			
ALUMINUM		PLATE, CHASSIS MOUNTING, LEFT SIDE	
MATERIAL			
5052-H32		G.D.L.	
TYPE & TEMPER		CHECKED	
HEAT TREAT. SPEC.			
YELLOW IRIDITE			
FINISH & SPEC. NO.		ELEC. DES. APP.	
		MECH. DES. APP.	
		SHEET	OF

MS-2715