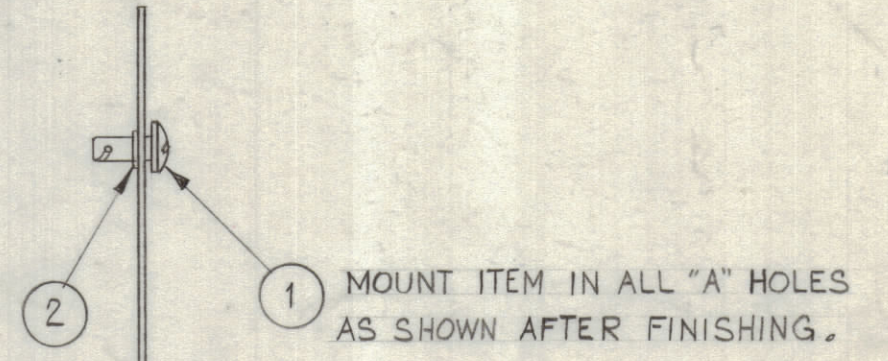
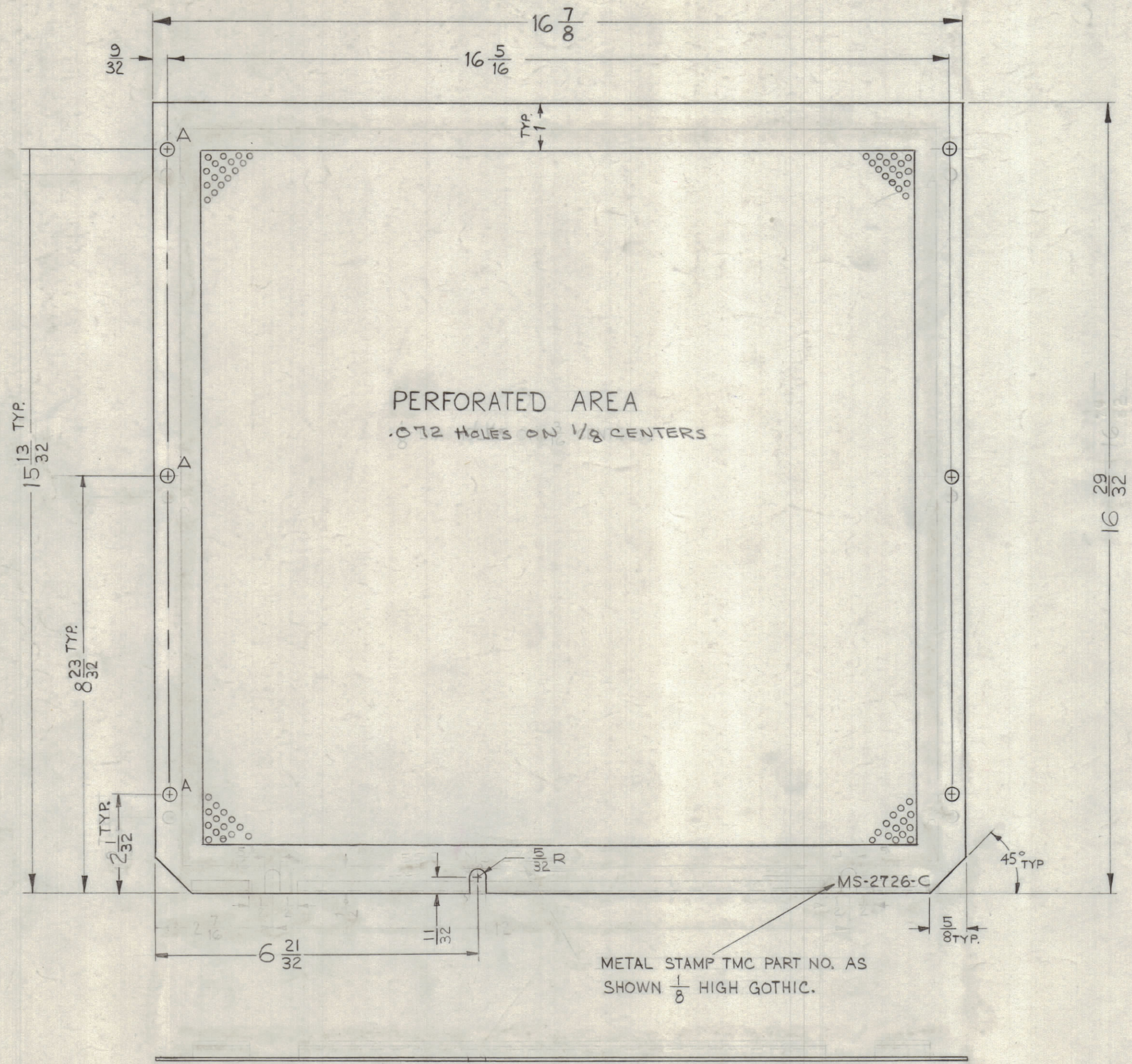


A = 1/4 DIA. 6 REQ.



METAL STAMP TMC PART NO. AS SHOWN 1/8 HIGH GOTHIC.

REF: MS-1775-24 (BLANK SIZE)

C	B2	BLANK SIZE REF: MS-1775-24, DELETED	4-25-63	8912	yes		
B	FS	On Ref. MS-1775-24 Was MS-1775-13; Hole Note Deleted	2-2-62	6326	EL		
	FB	16-29/32 Dim. Was 16-7/16					
	C2	1/4 X 3/16 Lip Deleted; (A) Holes Redimensioned	12-28-61	6118	A.A.		
SYM	ZONE	DESCRIPTION	DATE	CH. NO.	DRAFTS	CHECKER	ENG. APP.

UNLESS OTHERWISE SPECIFIED:
DIMENSIONS ARE IN INCHES
TOLERANCES ON
FRACTIONS ± 1/64 DECIMALS ± .005 ANGLES ± 1/2°

SCALE HALF (DO NOT SCALE).

MAXIMUM ALLOWABLE TOLERANCES HAVE BEEN DETERMINED AND ANY DEVIATIONS WILL BE CAUSE FOR REJECTION. REMOVE ALL BURRS & SHARP EDGES

UNLESS OTHERWISE SPECIFIED DIMENSIONS ARE IN INCHES AND INCLUDE CHEMICALLY APPLIED OR PLATED FINISHES

DECIMALS
X ± .05
.XX ± .01
.XXX ± .005

FRACTIONS
± 1/64
ANGLES
± 0° 30'

TOLERANCES

NOT HERE GUARANTEED 2-66

REQ. PER UNIT	MODEL	SECTION	ASS'Y. NO.	DATE
1	SBS-1			10-24-61

USED ON

6	2	FS-109-3	RING, STUD
6	1	FS-110-1	STUD, SLOTTED
REQ. ITEM	PART NO.		DESCRIPTION
.051		THE TECHNICAL MATERIEL CORP.	
STOCK SIZE		MAMARONECK, NEW YORK	
ALUMINUM		COVER, BOTTOM	
MATERIAL			
5052-H32		MAF	SFM
TYPE & TEMPER		DRAWN	CHECKED
HEAT TREAT. SPEC.		FINAL APPROVAL	
3404 YEL IRIDITE		MS-2726	
FINISH & SPEC. NO.		ELEC. DES. APP.	MECH. DES. APP.
		SHEET OF	