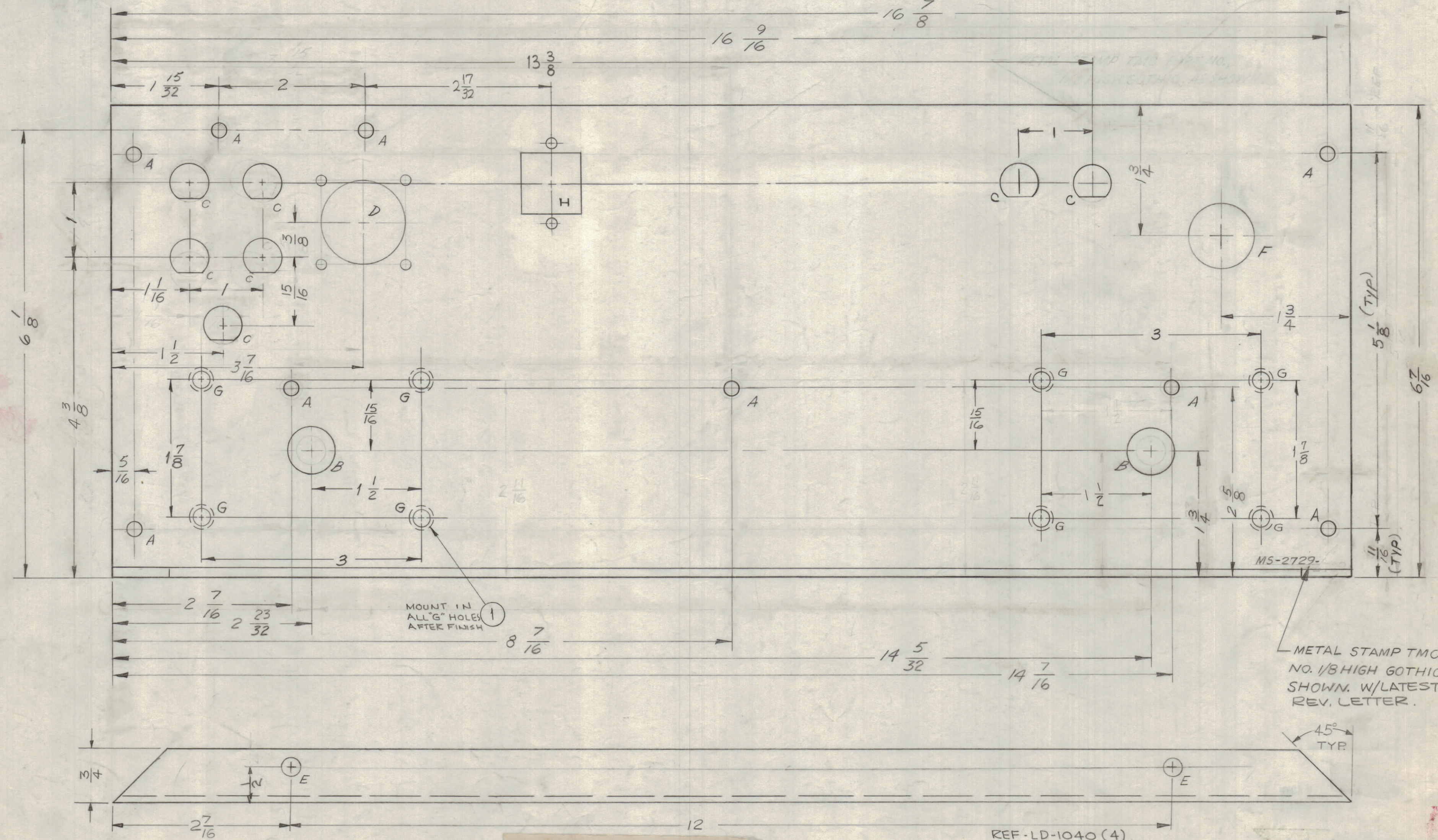
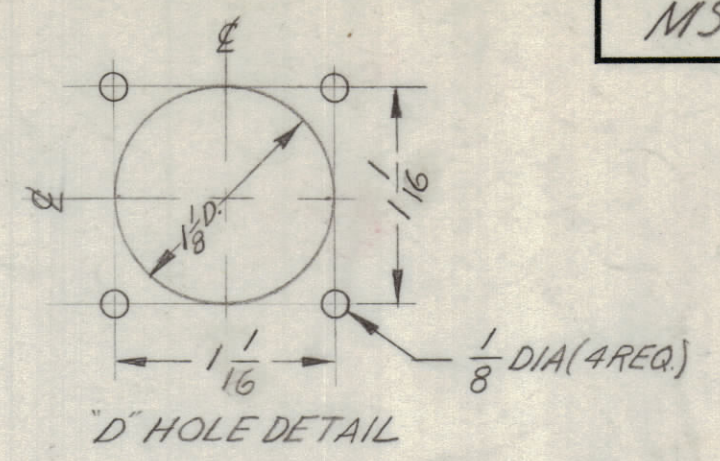
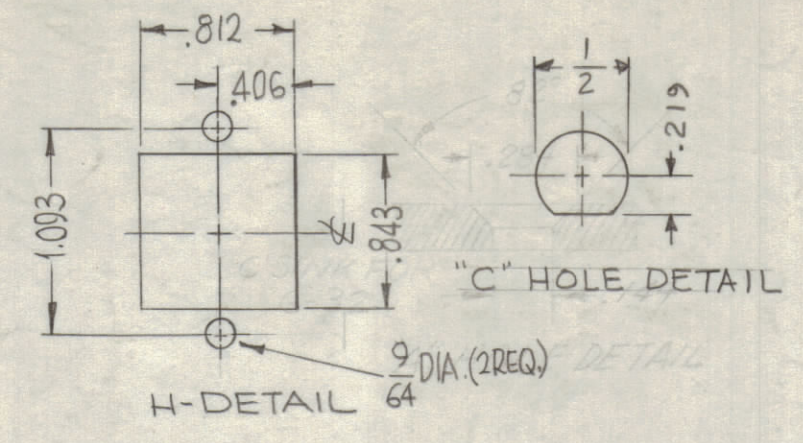


NOTICE TO PERSONS RECEIVING THIS DRAWING
 THE TECHNICAL MATERIEL CORPORATION claims proprietary right in the material disclosed hereon. This drawing is issued in confidence for engineering information only and may not be reproduced or used to manufacture anything shown hereon without permission from THE TECHNICAL MATERIEL CORPORATION to the user. This drawing is loaned for mutual assistance and is subject to recall at any time.

Property of:
 THE TECHNICAL MATERIEL CORPORATION
 MAMARONECK, NEW YORK

- HOLES:**
- A - 3/16 DIA. 9 REQ.
 - B - 5/8 DIA. 2 REQ.
 - C - SEE DETAIL 7 REQ.
 - D - (SEE DETAIL) 1 REQ.
 - E - 1/4 DIA. 2 REQ.
 - F - 7/8 DIA. 1 REQ.
 - G - .221 DIA. 8 REQ.
 - H - SEE DETAIL 1 REQ.



METAL STAMP TMC PART NO. 1/8 HIGH GOTHIC, AS SHOWN. W/LATEST REV. LETTER.

SYM	ZONE	DESCRIPTION	DATE	CH. NO.	DRAFTS	CHECKER	ENG. APP.
D	-	ONE "C" HOLE ADDED	5-14-62	14040	CJL	JL	
C	-	"H" DETAIL ADDED	7-30-64	12011	SRG		
B	-	CLARIFIED & UPDATED PNG	11/19/63	10324	SRG		
A	G1	DELETED 1/16 REF DIM	4-30-63	8911	SRG		

UNLESS OTHERWISE SPECIFIED:
 DIMENSIONS ARE IN INCHES
 TOLERANCES ON
 FRACTIONS ± 1/64 DECIMALS ± .005 ANGLES ± 1/2°

SCALE
 MAXIMUM ALLOWABLE TOLERANCES HAVE BEEN DETERMINED AND ANY DEVIATIONS WILL BE CAUSE FOR REJECTION. REMOVE ALL BURRS & SHARP EDGES

UNLESS OTHERWISE SPECIFIED DIMENSIONS ARE IN INCHES AND INCLUDE CHEMICALLY APPLIED OR PLATED FINISHES

DECIMALS: .X ± .05, .XX ± .01, .XXX ± .005
 FRACTIONS: ± 1/64, ± 0° 30'

TOLERANCES

REQ. PER UNIT	MODEL	SECTION	ASS'Y. NO.	DATE
1	HFI-1			7-26-62

REQ. ITEM	PART NO.	DESCRIPTION	SYMBOL
8	1	NT-129-832-4	NUT, SWAGE
		M. GELLMAN	
THE TECHNICAL MATERIEL CORP. MAMARONECK, NEW YORK			
		ALUMINUM	PANEL, REAR
		5052-H32	
		TYPE & TEMPER	HEAT TREAT. SPEC.
		5404 YEL. IRIDITE	
		FINISH & SPEC. NO.	
		ELEC. DES. APP.	MECH. DES. APP.
		W.H.	J.S.
		BP	
		MS-2729	D