

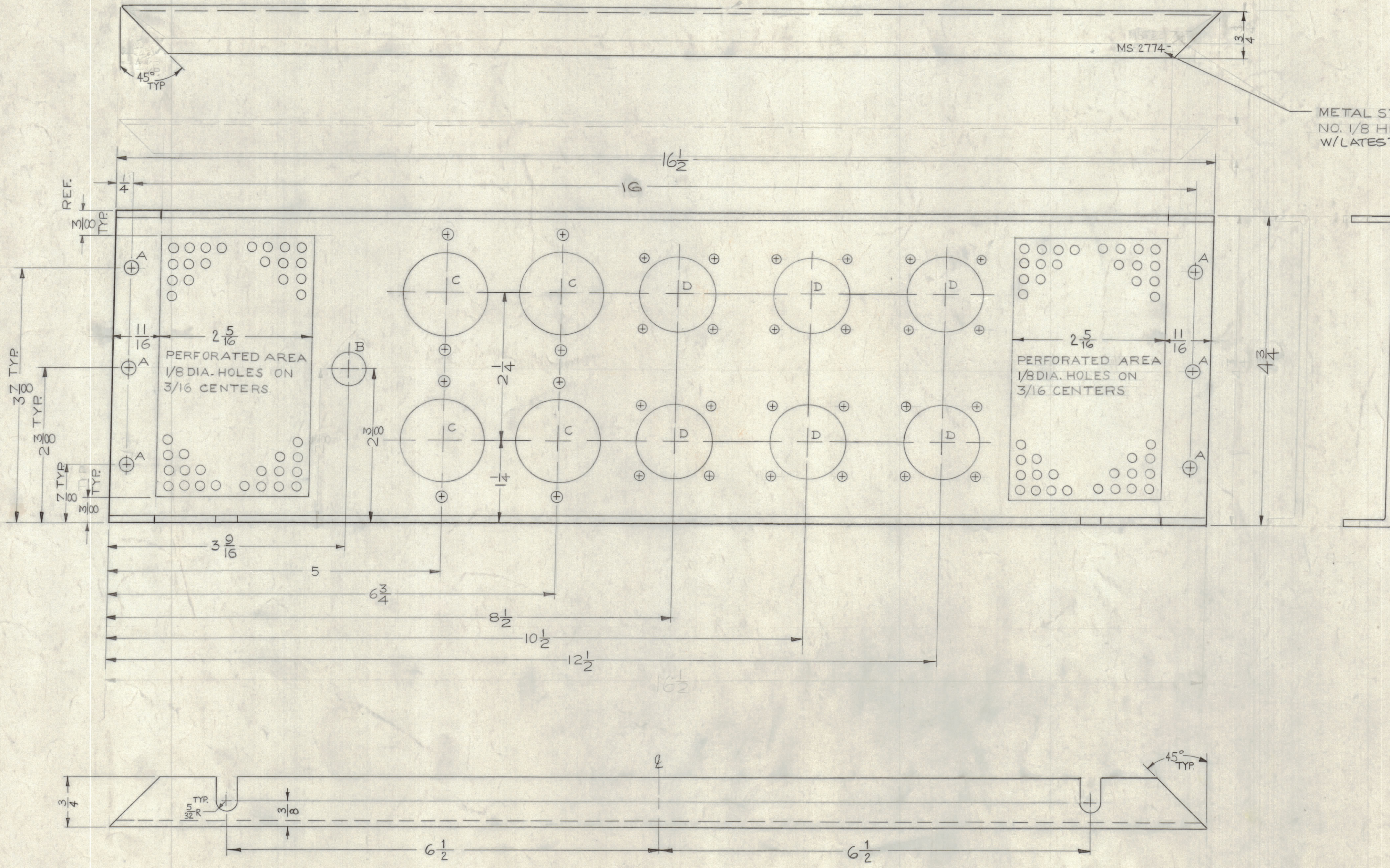
NOTICE TO PERSONS RECEIVING THIS DRAWING

THE TECHNICAL MATERIEL CORPORATION claims proprietary right in the material disclosed herein. This drawing is issued in confidence for engineering information only and may not be reproduced or used to manufacture anything shown herein without permission from THE TECHNICAL MATERIEL CORPORATION to the user. This drawing is loaned for mutual assistance and is subject to recall at any time.

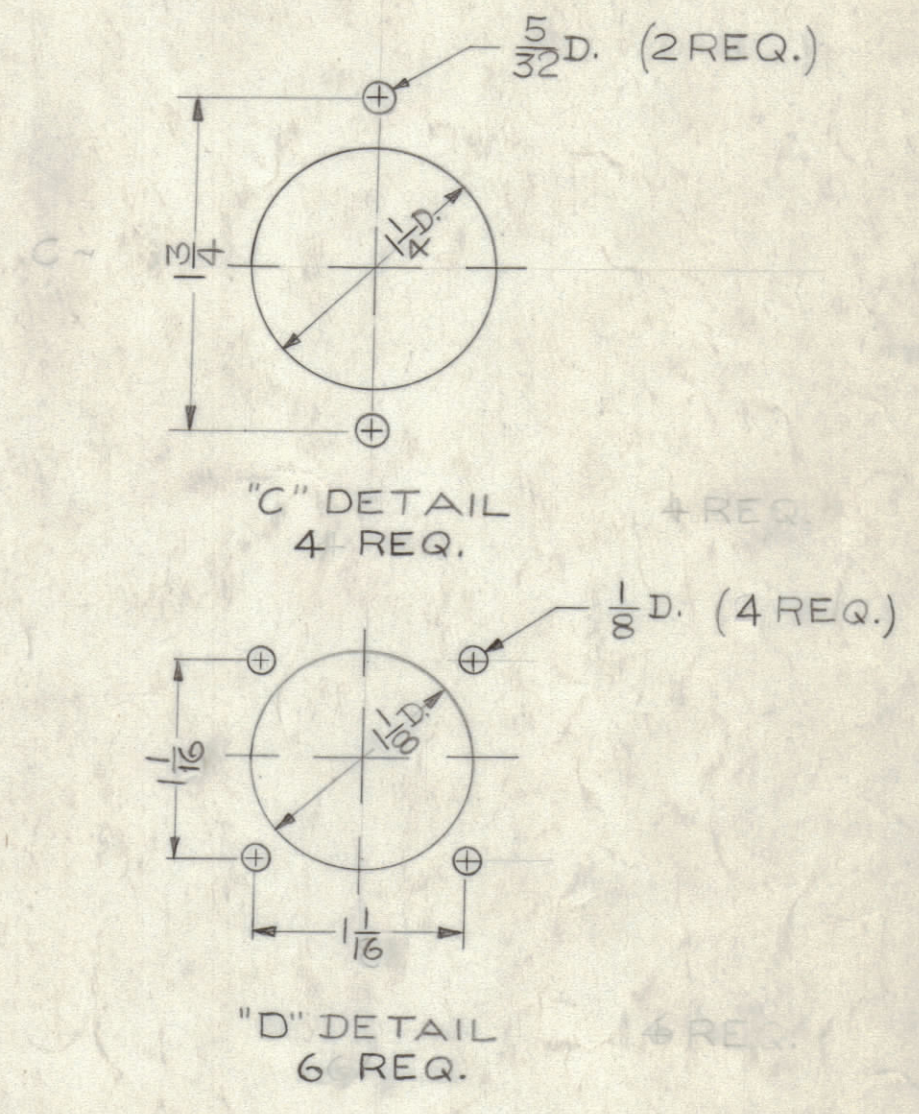
Property of:
THE TECHNICAL MATERIEL CORPORATION
MAMARONECK, NEW YORK

LEGEND		
HOLE	DESCRIPTION	REQ.
A	13/64 DIA.	6
B	1/2 DIA.	1
C	SEE DETAIL	4
D	SEE DETAIL	6

OPPOSITE SIDE IDENTICAL



METAL STAMP TMC PART NO. 1/8 HIGH GOTHIC W/LATEST REV. LETTER.



MS 2774 A

NOTE: USE MATERIAL THICKNESS FOR MAX. RADIUS ON ALL BENDS UNLESS OTHERWISE SPECIFIED.
NOTE: BLANK SIZE 16 1/2 x 6

SYM	ZONE	DESCRIPTION	DATE	CH. NO.	DRAFTS	CHECKER	ENG. APP.
A		DETAIL "D" QTY 1/8 HOLES WAS 2	10.24.66	17086	WHO		
UNLESS OTHERWISE SPECIFIED:			SCALE (DO NOT SCALE)				
DIMENSIONS ARE IN INCHES			MAXIMUM ALLOWABLE TOLERANCES HAVE BEEN DETERMINED AND ANY DEVIATIONS WILL BE CAUSE FOR REJECTION. REMOVE ALL BURRS & SHARP EDGES				
TOLERANCES ON FRACTIONS ± 1/64			DECIMALS ± .005		ANGLES ± 1/2°		

REQ. ITEM	PART NO.	DESCRIPTION	SYMBOL
.081		THE TECHNICAL MATERIEL CORP. MAMARONECK, NEW YORK	
ALUMINUM		PLATE, REAR	
MATERIAL			
5052-H32		C.A.	
TYPE & TEMPER		HEAT TREAT. SPEC.	
S4-04-YELLOW IRIDITE		RK	RK
FINISH & SPEC. NO.		ELEC. DES. APP.	
		MECH. DES. APP.	
		SHEET OF	
		MS 2774 A	

REQ. PER UNIT	MODEL	SECTION	ASBY. NO.	DATE
1	HFP-1		A-2382-6	12-4-61
USED ON				