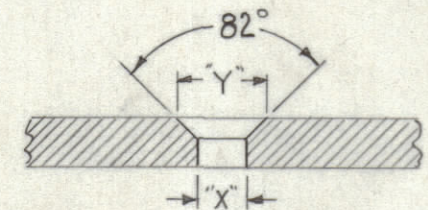


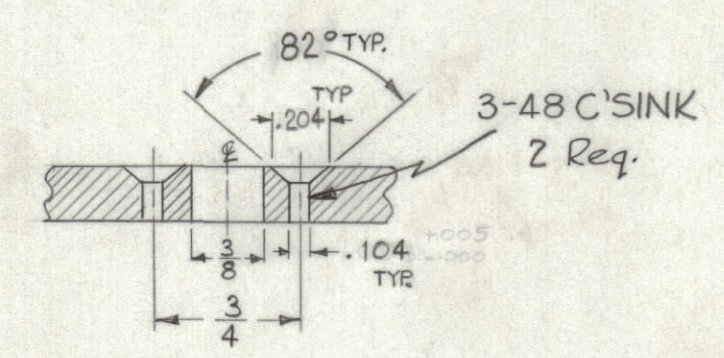
LEGEND		
HOLE	DESCRIPTION	REQ.
A	13/64 DIA.	4
B	15/64 DIA.	3
C	SEE DETAIL	5

NOTICE TO PERSONS RECEIVING THIS DRAWING
 THE TECHNICAL MATERIEL CORPORATION claims proprietary right in the material disclosed herein. This drawing is issued in confidence for engineering information only and may not be reproduced or used to manufacture anything shown herein without permission from THE TECHNICAL MATERIEL CORPORATION to the user. This drawing is loaned for mutual assistance and is subject to recall at any time.
 Property of:
 THE TECHNICAL MATERIEL CORPORATION
 MAMARONECK, NEW YORK

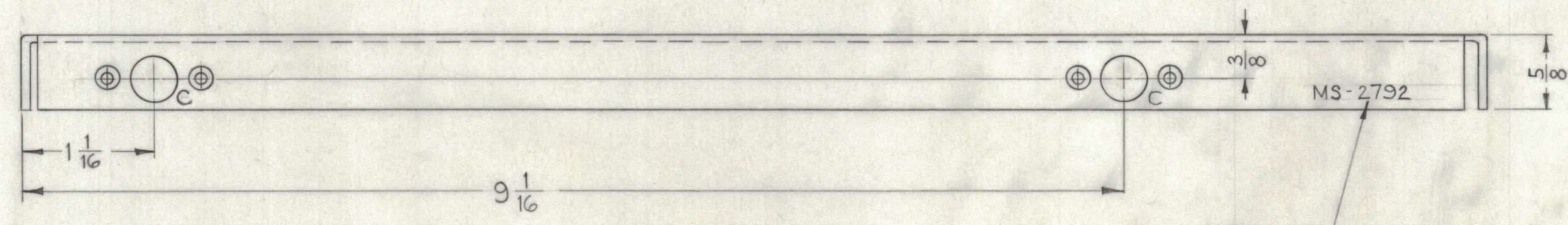
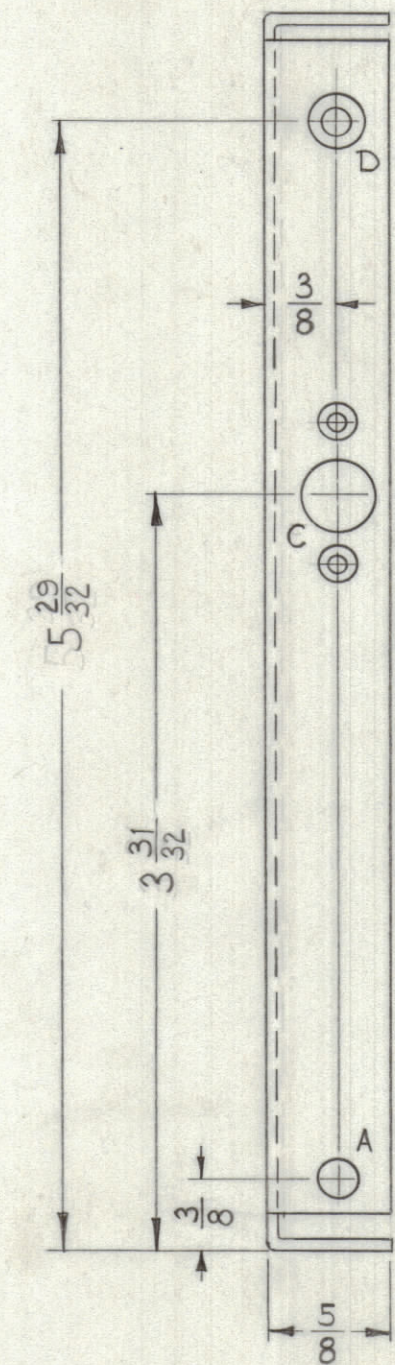
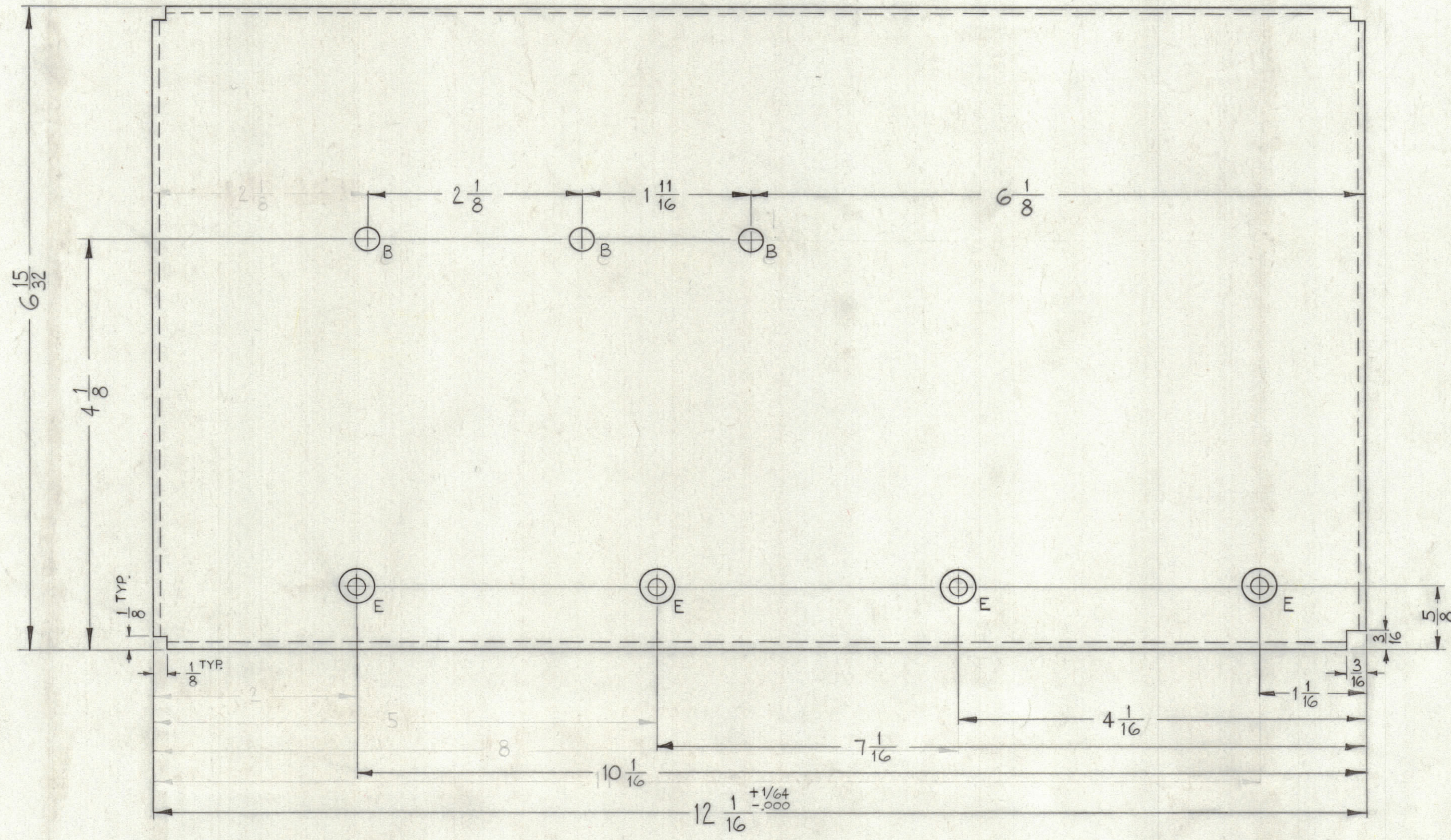
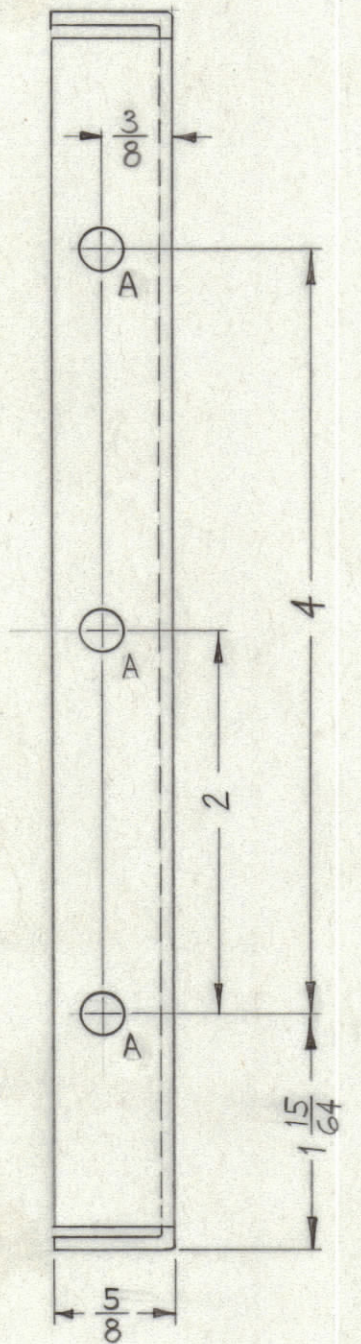
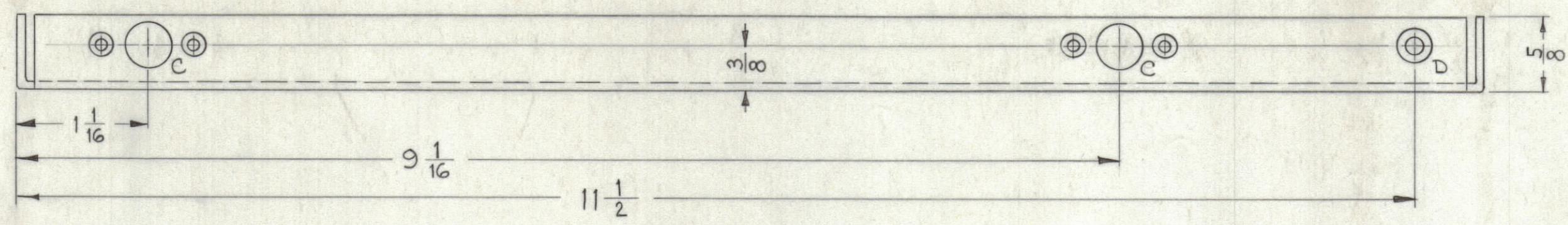


HOLE	SCREW TYPE	DIM X	DIM Y	REQ.
D	6-32	.144	.284	2
E	8-32	.165	.337	4

C'SINK DETAIL



C' DETAIL
5 REQ.



METAL STAMP TMC. PART NO. 1/8
 HIGH GOTHIC AS SHOWN.

USE MATERIAL THICKNESS FOR MAX. RADIUS
 ON ALL BENDS UNLESS OTHERWISE SPECIFIED

UNLESS OTHERWISE SPECIFIED
 DIMENSIONS ARE IN INCHES AND INCLUDE
 CHEMICALLY APPLIED OR PLATED FINISHES

DECIMALS	FRACTIONS
.X ± .05	1/64
.XX ± .01	1/32
.XXX ± .005	± 0° 30'

SYM	ZONE	DESCRIPTION	DATE	CH. NO.	DRAFTS	CHECKER	ENG. APP.
UNLESS OTHERWISE SPECIFIED: DIMENSIONS ARE IN INCHES TOLERANCES ON FRACTIONS ± 1/64 DECIMALS ± .005 ANGLES ± 1/2°			SCALE FULL (DO NOT SCALE).				
MAXIMUM ALLOWABLE TOLERANCES HAVE BEEN DETERMINED AND ANY DEVIATIONS WILL BE CAUSE FOR REJECTION. REMOVE ALL BURRS & SHARP EDGES							

REQ. ITEM	PART NO.	DESCRIPTION	SYMBOL
1	.064	THE TECHNICAL MATERIEL CORP. MAMARONECK, NEW YORK	
	ALUMINUM	SIDEPLATE, RIGHT	
MATERIAL			
5052-H32		MAF RUIZZO	SPM
TYPE & TEMPER		HEAT TREAT. SPEC.	
S404 YEL IRIDITE		MS-2792	
FINISH & SPEC. NO.		SHEET OF	

REQ. PER UNIT	MODEL	SECTION	ASS'Y. NO.	DATE
1	LFA-2			12-20-61