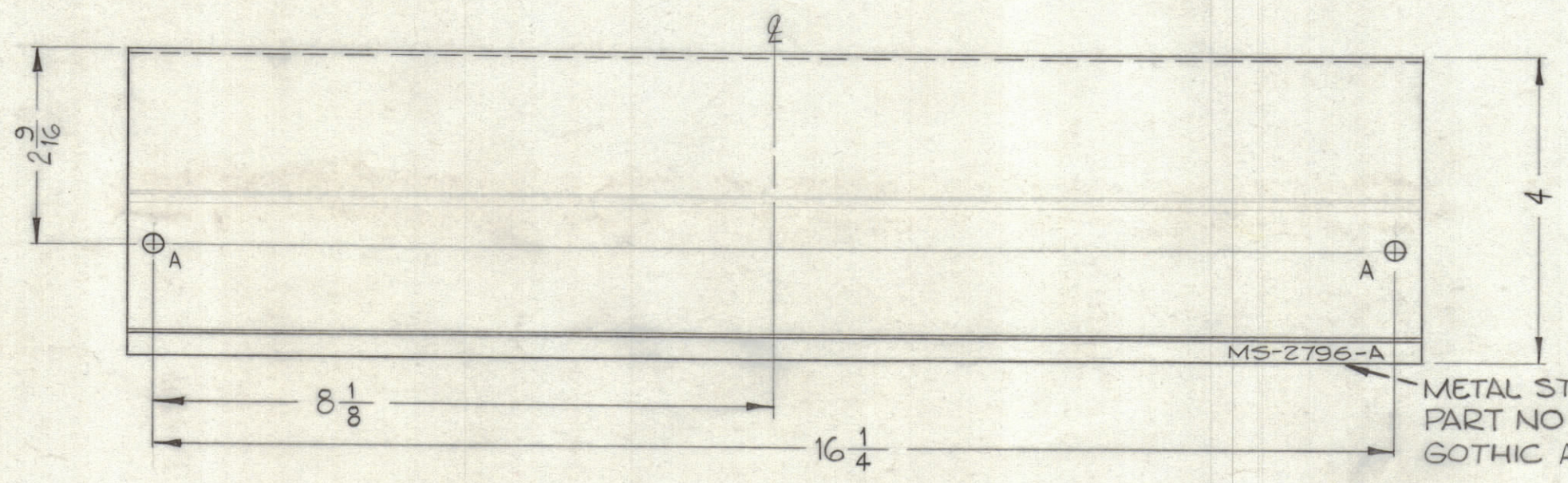
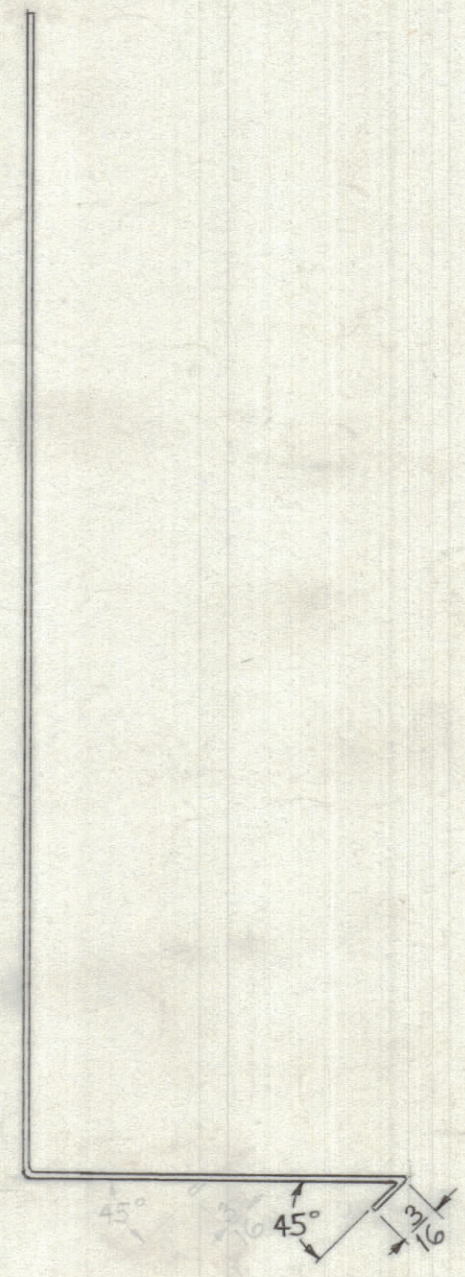
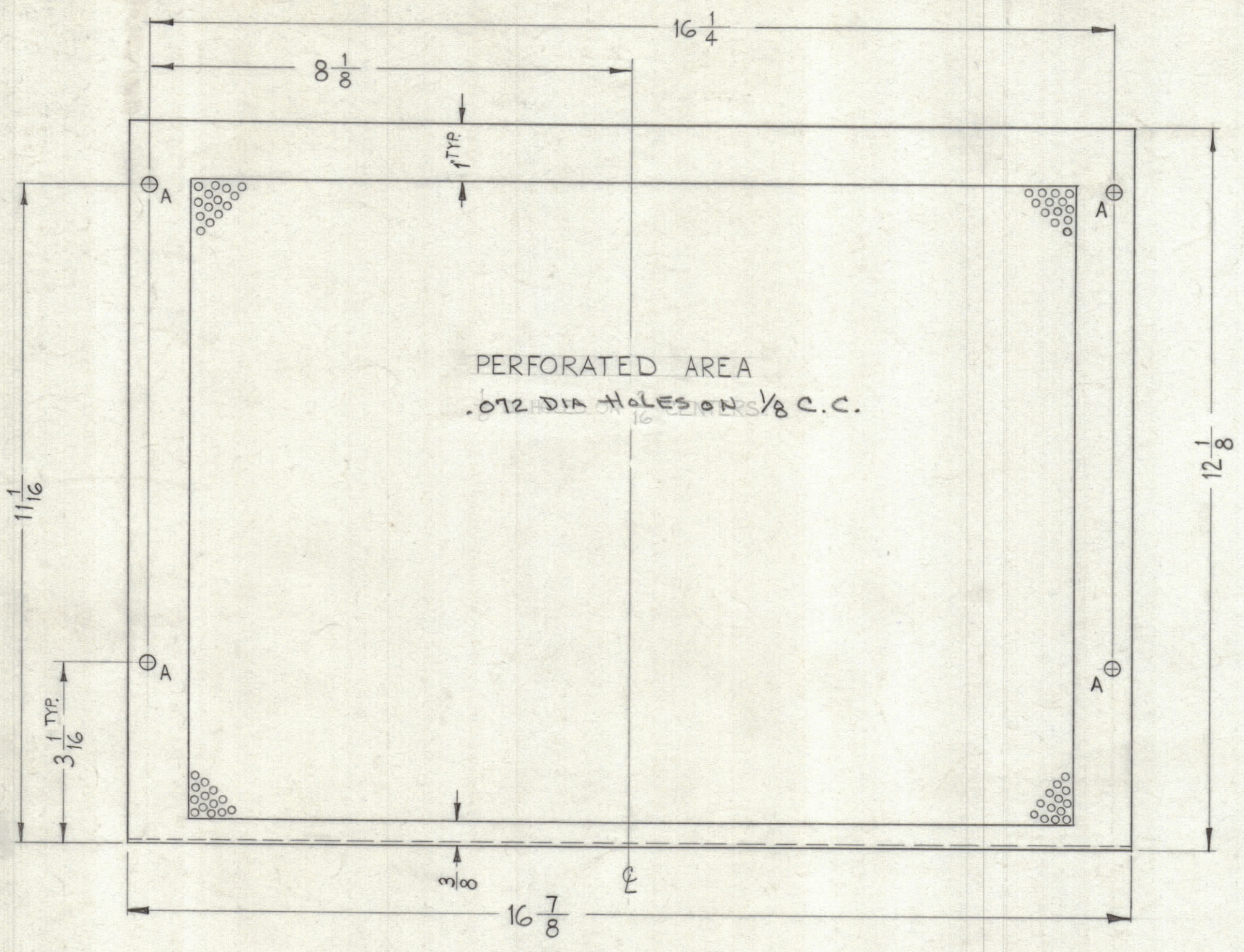


LEGEND		
HOLE	DESCRIPTION	REQ.
A	1/4 DIA.	6

NOTICE TO PERSONS RECEIVING THIS DRAWING

THE TECHNICAL MATERIEL CORPORATION claims proprietary right in the material disclosed hereon. This drawing is issued in confidence for engineering information only and may not be reproduced or used to manufacture anything shown hereon without permission from THE TECHNICAL MATERIEL CORPORATION to the user. This drawing is loaned for mutual assistance and is subject to recall at any time.

Property of:
 THE TECHNICAL MATERIEL CORPORATION
 MAMARONECK, NEW YORK



UNLESS OTHERWISE SPECIFIED
 DIMENSIONS ARE IN INCHES AND INCLUDE
 CHEMICALLY APPLIED OR PLATED FINISHES

DECIMALS	FRACTIONS
.X ± .05	± 1/64
.XX ± .01	ANGLES
.XXX ± .005	± 0° 30'

CUT HERE
 GUARANTEED
 2-68

REF: MS-1775-19 (4)

SYM	ZONE	DESCRIPTION	DATE	CH. NO.	DRAFTS	CHECKER	ENG. APP.
A	BZ	BLANK SIZE REF: MS-1775-19, DELETED	5-25-63	8912	gny	W.A.F.	SEE NOTE

UNLESS OTHERWISE SPECIFIED:
 DIMENSIONS ARE IN INCHES
 TOLERANCES ON
 FRACTIONS ± 1/64 DECIMALS ± .005 ANGLES ± 1/2°

SCALE DO NOT SCALE

MAXIMUM ALLOWABLE TOLERANCES HAVE BEEN DETERMINED AND ANY DEVIATIONS WILL BE CAUSE FOR REJECTION. REMOVE ALL BURRS & SHARP EDGES

REQ. PER UNIT	MODEL	SECTION	ASS'Y. NO.	DATE
1	LFA-2			12-21-61

USED ON

REQ. ITEM	PART NO.	DESCRIPTION	SYMBOL
.051		THE TECHNICAL MATERIEL CORP. MAMARONECK, NEW YORK	
STOCK SIZE		COVER, TOP	
MATERIAL		ALUMINUM, PERF. SEE NOTE	
TYPE & TEMPER	HEAT TREAT. SPEC.	W.A.F. RUIZZO	SEM
FINISH & SPEC. NO.		MS-2796	A

ELEC. DES. APP. MECH. DES. APP. SHEET OF