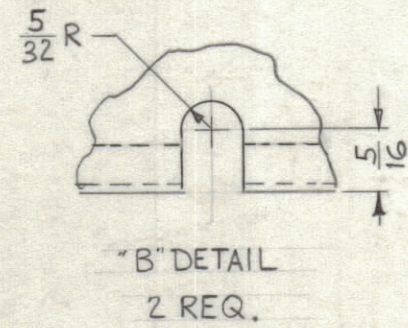
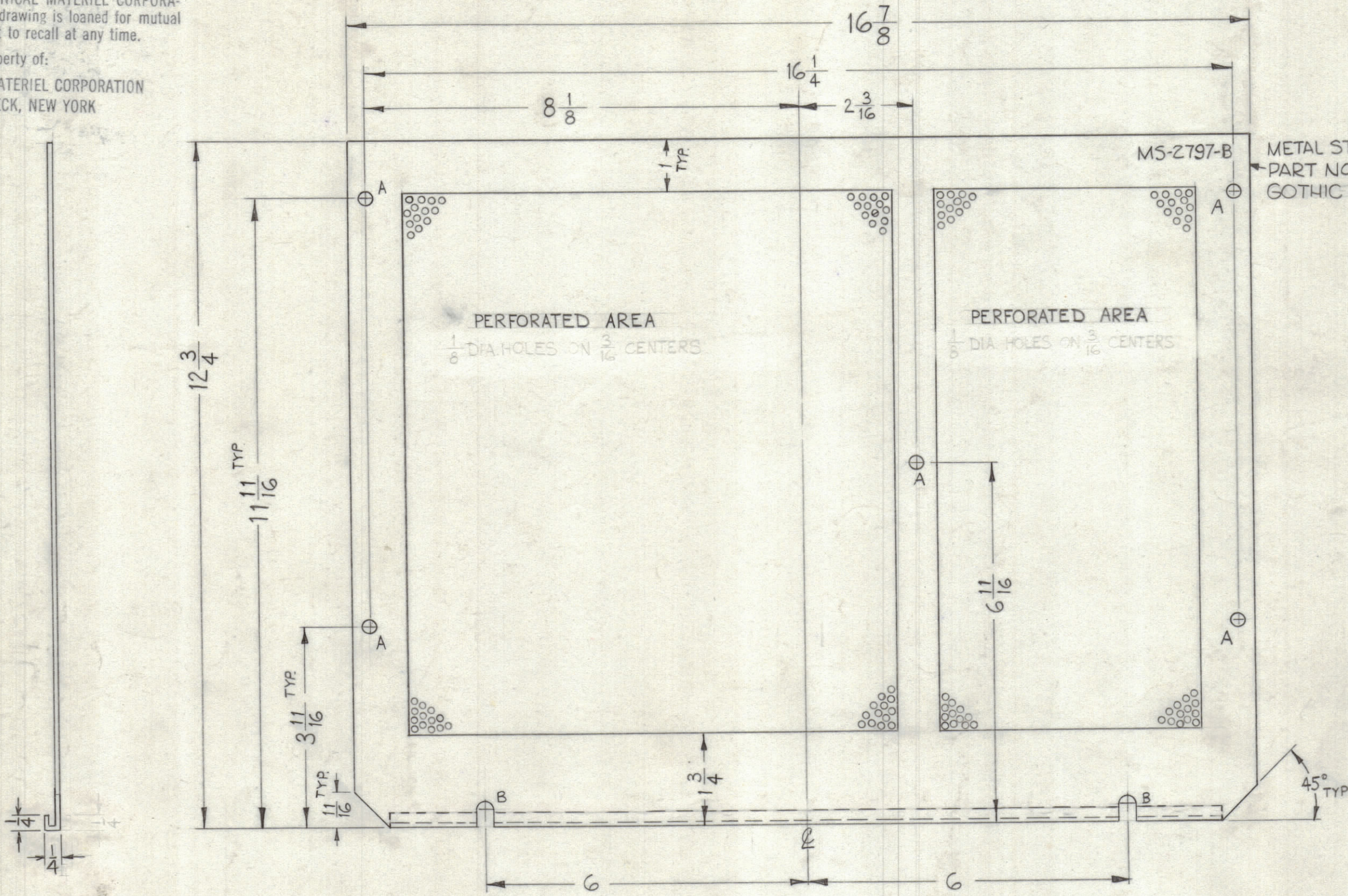


NOTICE TO PERSONS RECEIVING THIS DRAWING

THE TECHNICAL MATERIEL CORPORATION claims proprietary right in the material disclosed hereon. This drawing is issued in confidence for engineering information only and may not be reproduced or used to manufacture anything shown hereon without permission from THE TECHNICAL MATERIEL CORPORATION to the user. This drawing is loaned for mutual assistance and is subject to recall at any time.

Property of:
THE TECHNICAL MATERIEL CORPORATION
MAMARONECK, NEW YORK

LEGEND		
HOLE	DESCRIPTION	REQ.
A	1/4 DIA.	5



NOTE: PERFORATIONS:
.0072 DIA HOLES ON 1/8 C.C.

REF: MS-1784-9 (+)

SYM	ZONE	DESCRIPTION	DATE	CH. NO.	DRAFTS	CHECKER	ENG. APP.
B2		BLANK SIZE REF: MS-1784-9, DELETED	4-25-63	8912	MM		
A	D7	1/4 DIM WAS 3/32 & CHGD. SOLID LINE TO DOTTED ON UP	5-25-62	6754	BJ		

UNLESS OTHERWISE SPECIFIED:
DIMENSIONS ARE IN INCHES
TOLERANCES ON
FRACTIONS ± 1/64 DECIMALS ± .005 ANGLES ± 1/2°

SCALE HALF (DO NOT SCALE)

MAXIMUM ALLOWABLE TOLERANCES HAVE BEEN DETERMINED AND ANY DEVIATIONS WILL BE CAUSE FOR REJECTION. REMOVE ALL BURRS & SHARP EDGES

UNLESS OTHERWISE SPECIFIED
DIMENSIONS ARE IN INCHES AND INCLUDE CHEMICALLY APPLIED OR PLATED FINISHES

DECIMALS	FRACTIONS
.X ± .05	± 1/64
.XX ± .01	ANGLES ± 0° 30'
.XXX ± .005	

CUT HERE GUARANTEED 2-66

REQ. PER UNIT	MODEL	SECTION	ASS'Y. NO.	DATE
1	LFA-2			12-22-61

REQ. ITEM	PART NO.	DESCRIPTION	SYMBOL
	-051	THE TECHNICAL MATERIEL CORP. MAMARONECK, NEW YORK	
	PERFORATED ALUMINUM	COVER, BOTTOM	
	5052-H32		
		TYPE & TEMPER	HEAT TREAT. SPEC.
		FINISH & SPEC. NO.	ELEC. DES. APP. MECH. DES. APP. SHEET OF

DRAWN: WAT, RUIZZO, [Signature]
CHECKED: [Signature]
FINAL APPROVAL: [Signature]
MS-2797 B