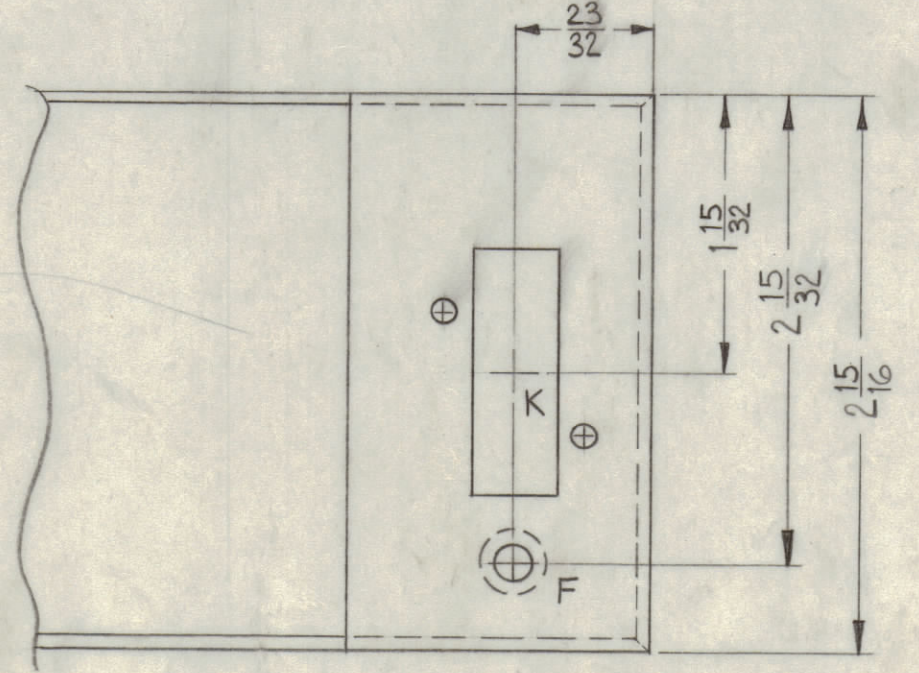
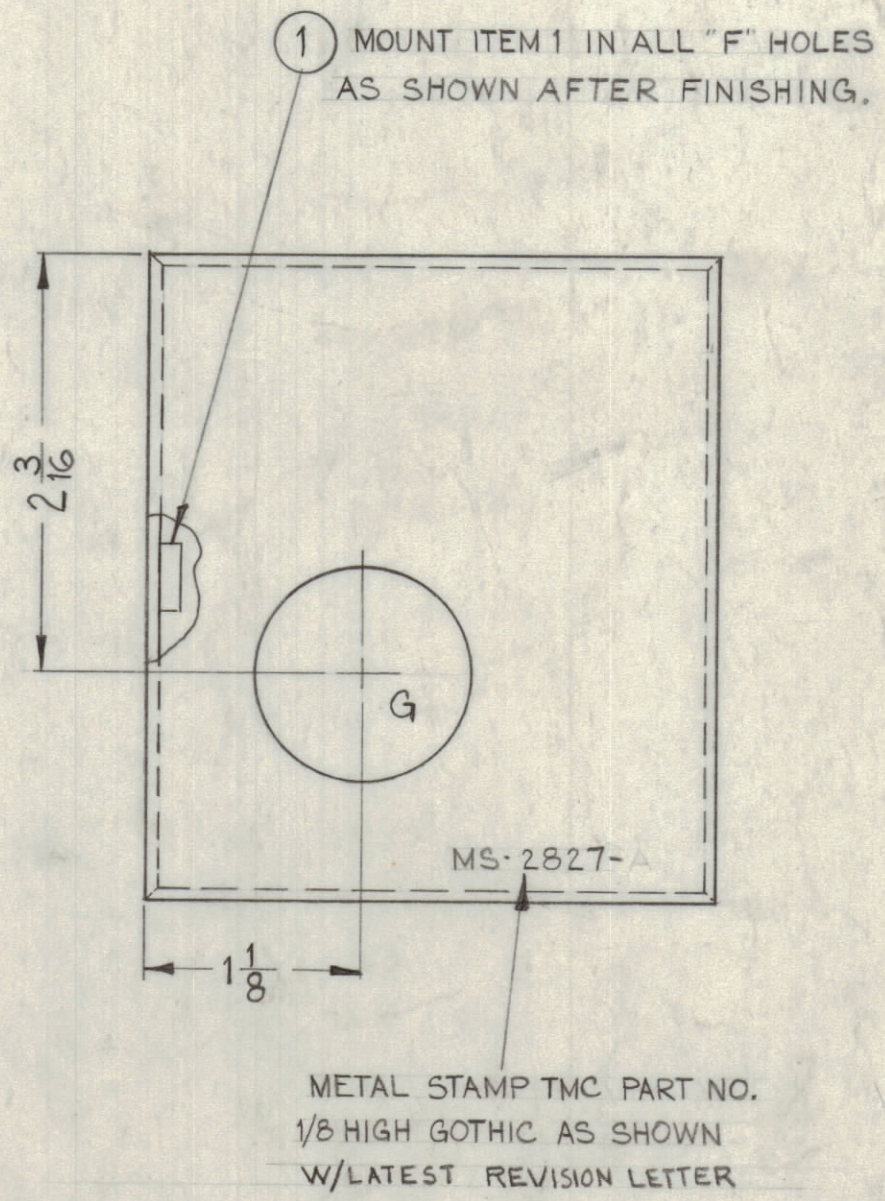
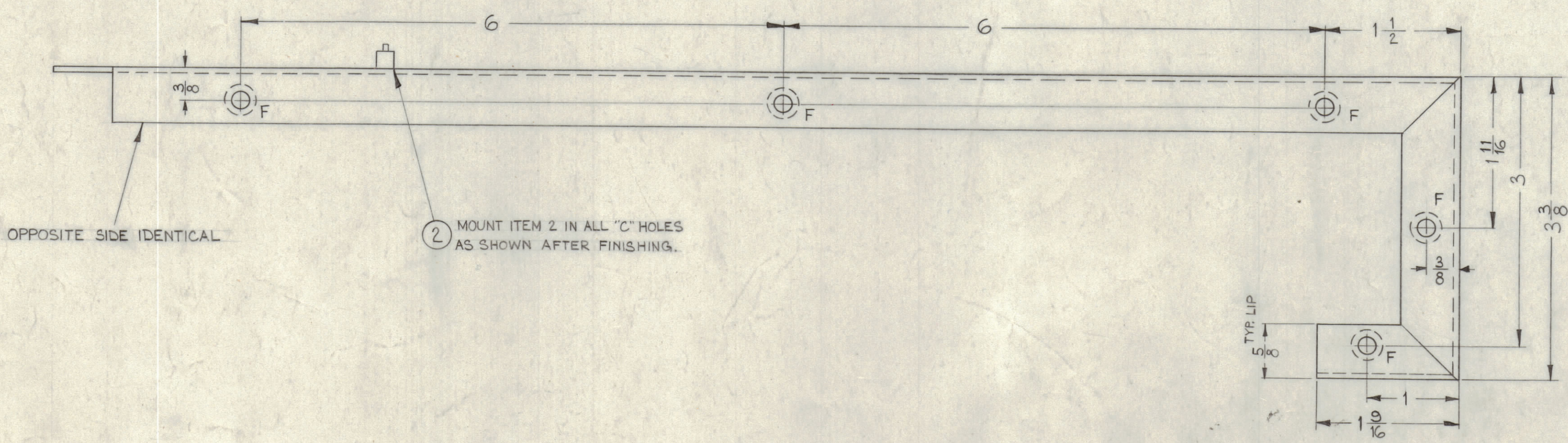
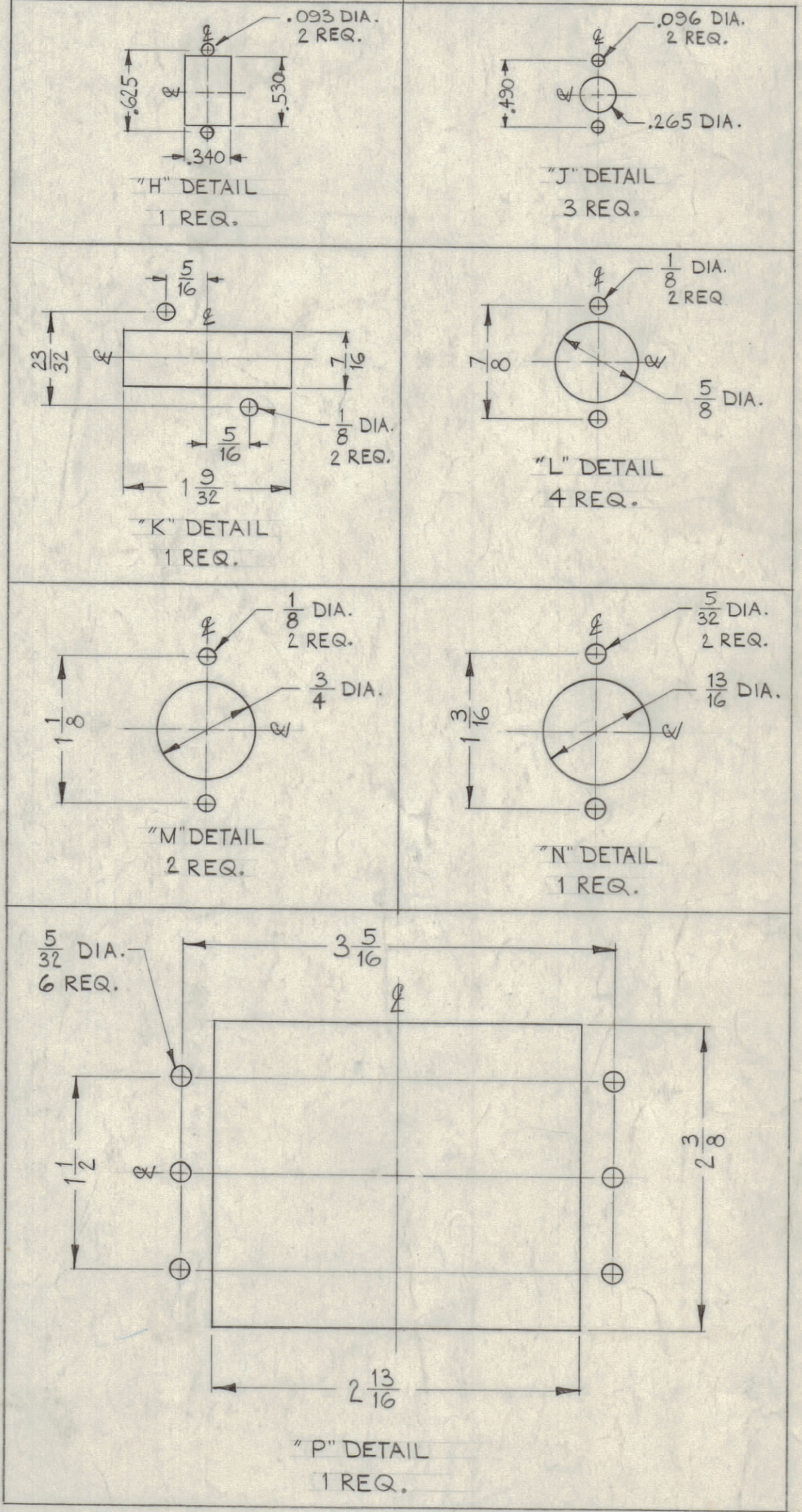


LEGEND		
HOLE	DESCRIPTION	REQ.
A	1/8 DIA.	8
B	5/32 DIA.	6
C	.158 ± .002 DIA	9
D	3/16 DIA.	41
E	5/16 DIA.	6
F	.191-.194 DIA.	11
G	1 1/8 DIA.	1
H	7/16 DIA.	1



NOTICE TO PERSONS RECEIVING THIS DRAWING

THE TECHNICAL MATERIEL CORPORATION claims proprietary right in the material disclosed herein. This drawing is issued in confidence for engineering information only and may not be reproduced or used to manufacture anything shown herein without permission from THE TECHNICAL MATERIEL CORPORATION to the user. This drawing is loaned for mutual assistance and is subject to recall at any time.

Property of:
THE TECHNICAL MATERIEL CORPORATION
 MAMARONECK, NEW YORK

UNLESS OTHERWISE SPECIFIED	
DECIMALS	FRACTIONS
± .015	± 1/64
± .005	± .005

SYM	ZONE	DESCRIPTION	DATE	CH. NO.	DRAFTS	CHECKER	ENG. APP.
C		1/2" HOLE DELETED 1" HOLE ADDED	11/4/61	12977	H.V.I.		
B		E, F10 2 .48" HOLES ADDED	4-9-65	13868	et.	J.L.	
A		G2 C HOLES WERE .166 DIA	12/13/63	10625			

REQ.	ITEM	PART NO.	DESCRIPTION	SYMBOL
8	2	TE-160-1	FEED-THRU, TEFLON	C
11	1	NT-129-632-4	NUT, ROUND, SWAGE TYPE	F

STOCK SIZE		THE TECHNICAL MATERIEL CORP.	
ALUMINUM		MAMARONECK, NEW YORK	
.064		CHASSIS, ELECTRICAL EQUIPMENT	
5052-H32		3400 DECK	
S404 YEL IRIDITE		DRAWN: JMA	
FINISH & SPEC. NO.		CHECKED: JMA	
ELEC. DES. APP.		MECH. DES. APP.	
SHEET		OF	

MS-2827 C