

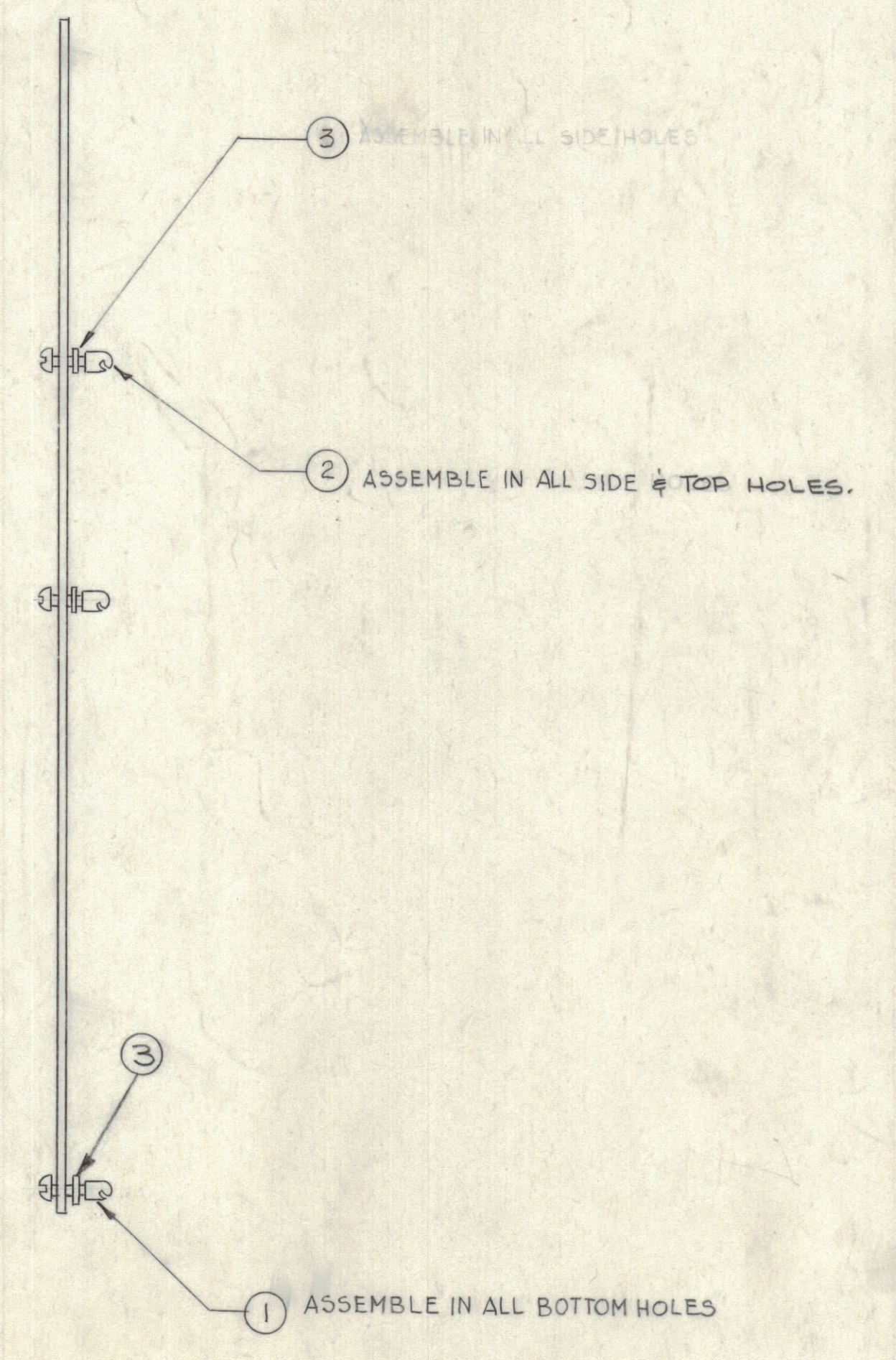
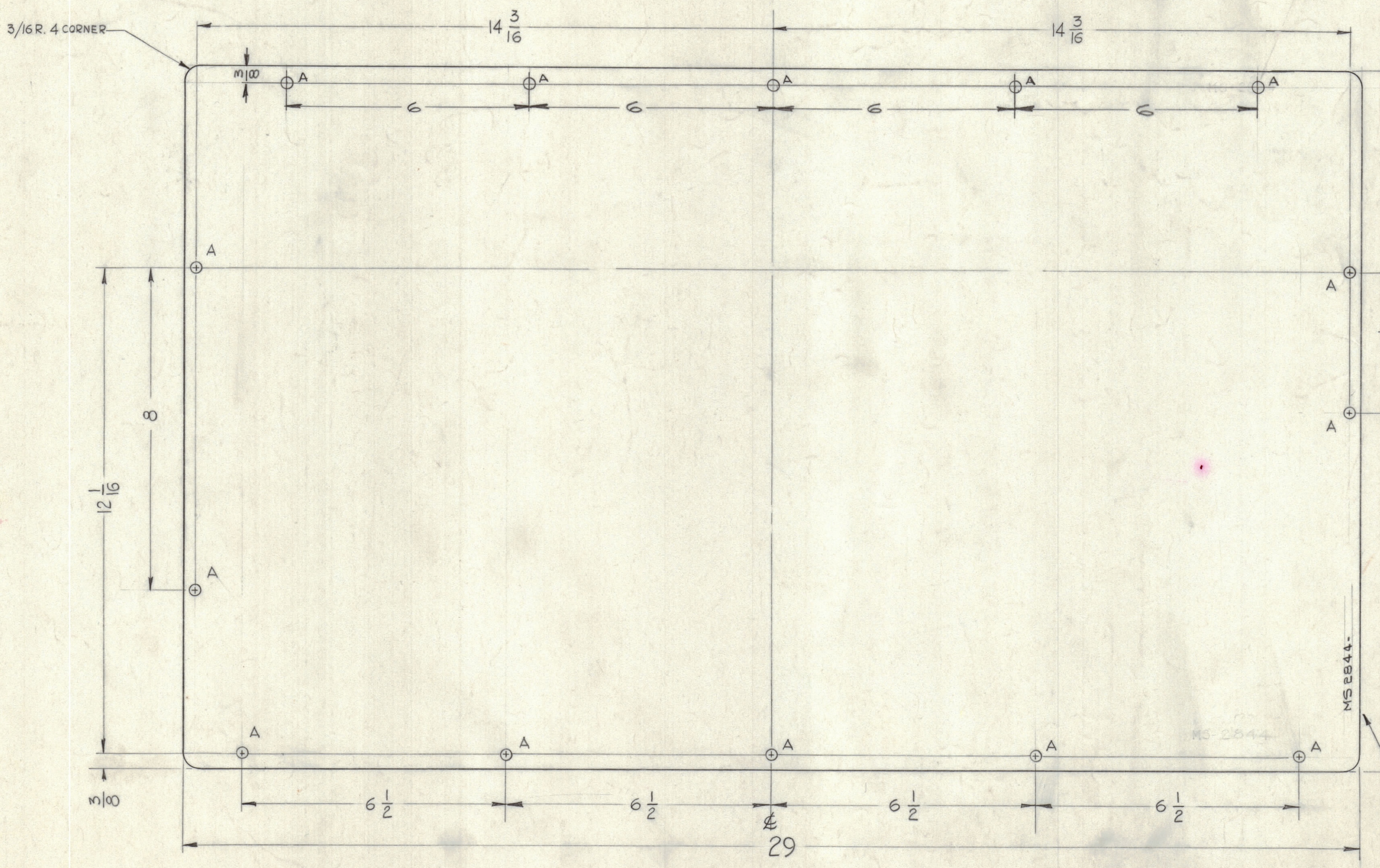
NOTICE TO PERSONS RECEIVING THIS DRAWING

THE TECHNICAL MATERIEL CORPORATION claims proprietary right in the material disclosed hereon. This drawing is issued in confidence for engineering information only and may not be reproduced or used to manufacture anything shown hereon without permission from THE TECHNICAL MATERIEL CORPORATION to the user. This drawing is loaned for mutual assistance and is subject to recall at any time.

Property of:
THE TECHNICAL MATERIEL CORPORATION
MAMARONECK, NEW YORK

HOLES ~
A ~ 1/4 DIA. 14 Req.

METAL STAMP PART NO. 1/8 HIGH GOTHIC AS SHOWN



METAL STAMP TMC PART NO. 1/8 HIGH GOTHIC, WITH LATEST REVISION LETTER.

UNLESS OTHERWISE SPECIFIED DIMENSIONS ARE IN INCHES AND INCLUDE CHEMICALLY APPLIED OR PLATED FINISHES	
DECIMALS	FRACTIONS
xx ± .05	± 1/64
xxx ± .005	± 0° 30'
TOLERANCES	

UNLESS OTHERWISE SPECIFIED:		SCALE DO NOT SCALE	
DIMENSIONS ARE IN INCHES		MAXIMUM ALLOWABLE TOLERANCES HAVE BEEN DETERMINED AND ANY DEVIATIONS WILL BE CAUSE FOR REJECTION. REMOVE ALL BURRS & SHARP EDGES	
TOLERANCES ON FRACTIONS ± 1/64		DECIMALS ± .005	
ANGLES ± 1/2°			

REF: LD-1053 (4)

14	3	FS-109-3	RING, STUD RETAINING	A
9	2	FS-110-7	STUD, SLOTTED HEAD	A
5	1	FS-110-1	STUD, SLOTTED HEAD	A
REQ. ITEM	PART NO.	DESCRIPTION		SYMBOL
.064 THK		THE TECHNICAL MATERIEL CORP. MAMARONECK, NEW YORK		
ALUMINUM		COVER, REAR MAIN FRAME SHIPBOARD		
MATERIAL		SHIPBOARD		
5032-H32		G.D.L. <i>[Signature]</i>		
TYPE & TEMPER		HEAT TREAT. SPEC.		FINAL APPROVAL
9404 YELL. IRIDITE		<i>[Signature]</i>		<i>[Signature]</i>
FINISH & SPEC. NO.		ELEC. DES. APP. <i>[Signature]</i>		MECH. DES. APP. <i>[Signature]</i>
		SHEET		OF

MS-2844 B