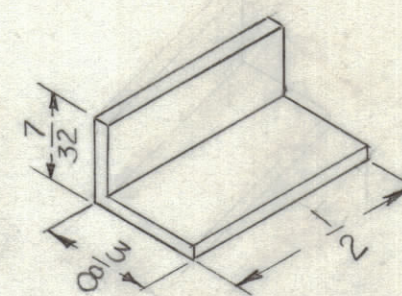


**NOTICE TO PERSONS RECEIVING THIS DRAWING**

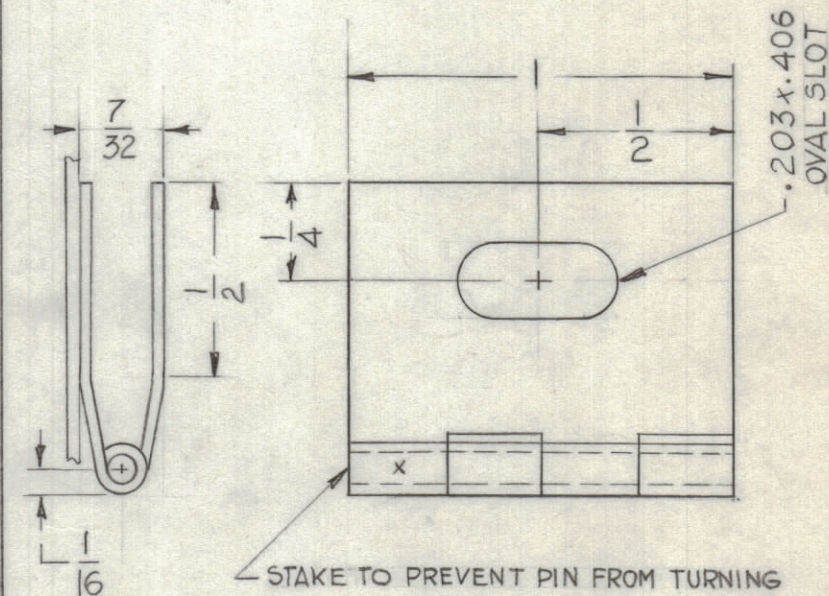
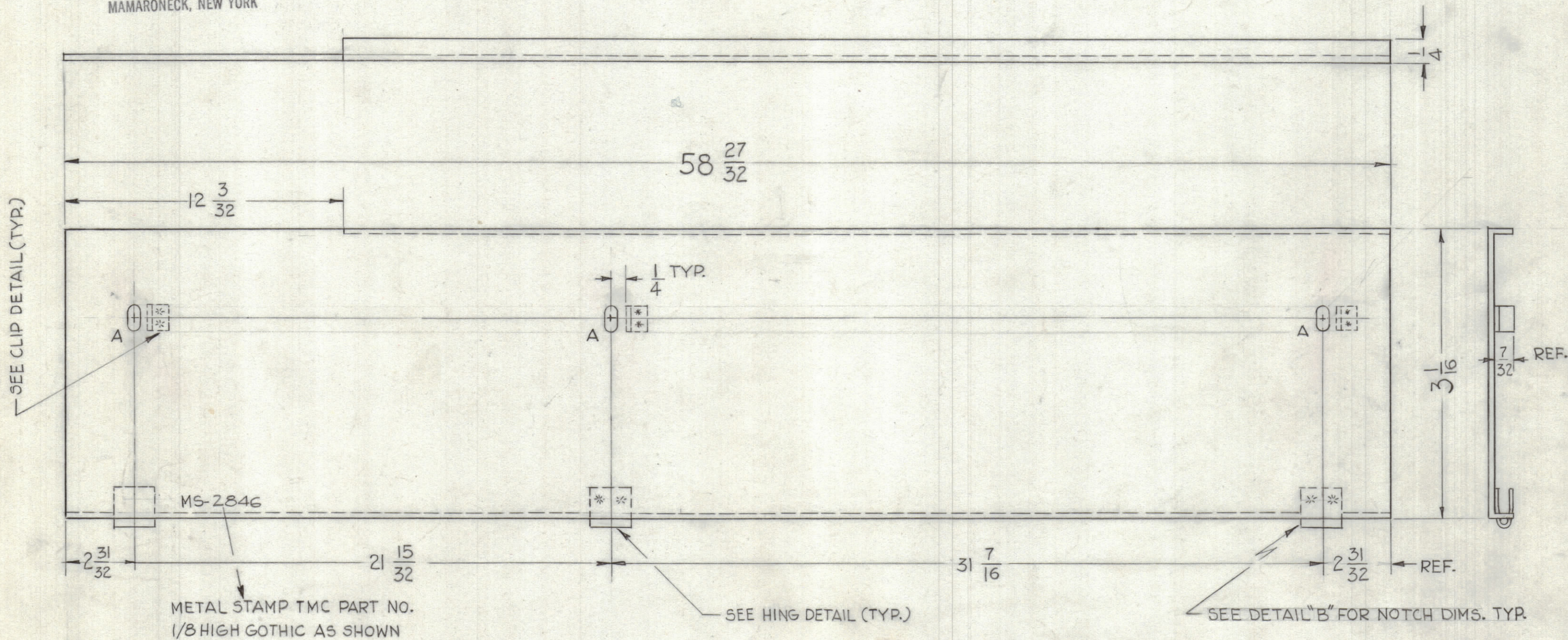
THE TECHNICAL MATERIEL CORPORATION claims proprietary right in the material disclosed hereon. This drawing is issued in confidence for engineering information only and may not be reproduced or used to manufacture anything shown hereon without permission from THE TECHNICAL MATERIEL CORPORATION to the user. This drawing is loaned for mutual assistance and is subject to recall at any time.

Property of:  
THE TECHNICAL MATERIEL CORPORATION  
MAMARONECK, NEW YORK

HOLES~  
A - .187 x .312 OVAL SLOT 3 Req.



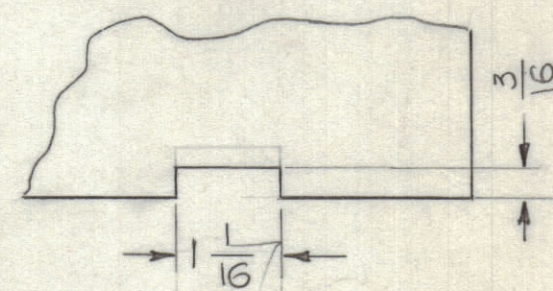
CLIP DETAIL  
3 REQ.  
20 GA. STEEL



HING DETAIL  
3 REQ.

FINISH~

- S 371 DEGREASING
- S 114 ZINC CHROMATE PRIMER
- S 115 SMOOTH GRAY ENAMEL



DETAIL "B"  
3 REQ.

SYM	ZONE	DESCRIPTION	DATE	CH. NO.	DRAFTS	CHECKER	ENG. APP.
UNLESS OTHERWISE SPECIFIED:							
DIMENSIONS ARE IN INCHES			SCALE DO NOT SCALE				
TOLERANCES ON FRACTIONS ± 1/64			MAXIMUM ALLOWABLE TOLERANCES HAVE BEEN DETERMINED AND ANY DEVIATIONS WILL BE CAUSE FOR REJECTION. REMOVE ALL BURRS & SHARP EDGES				
DECIMALS ± .005			ANGLES ± 1/2°				

REQ. PER UNIT	MODEL	SECTION	ASS'Y. NO.	DATE
1	GPT-10K(C)AC			1-19-61

REQ. ITEM	PART NO.	DESCRIPTION	SYMBOL
	20 GA.	THE TECHNICAL MATERIEL CORP.	
	STOCK SIZE	MAMARONECK, NEW YORK	
	STEEL	STRIP, TRIM, REAR, CENTER	
	MATERIAL	SHIPBOARD	
		G.D.L. DRAWN	
		12/20 CHECKED	
		J.M. FINAL APPROVAL	
		SEE NOTE	
		MS-2846	
		ELEC. DES. APP.	
		MECH. DES. APP.	
		SHEET OF	