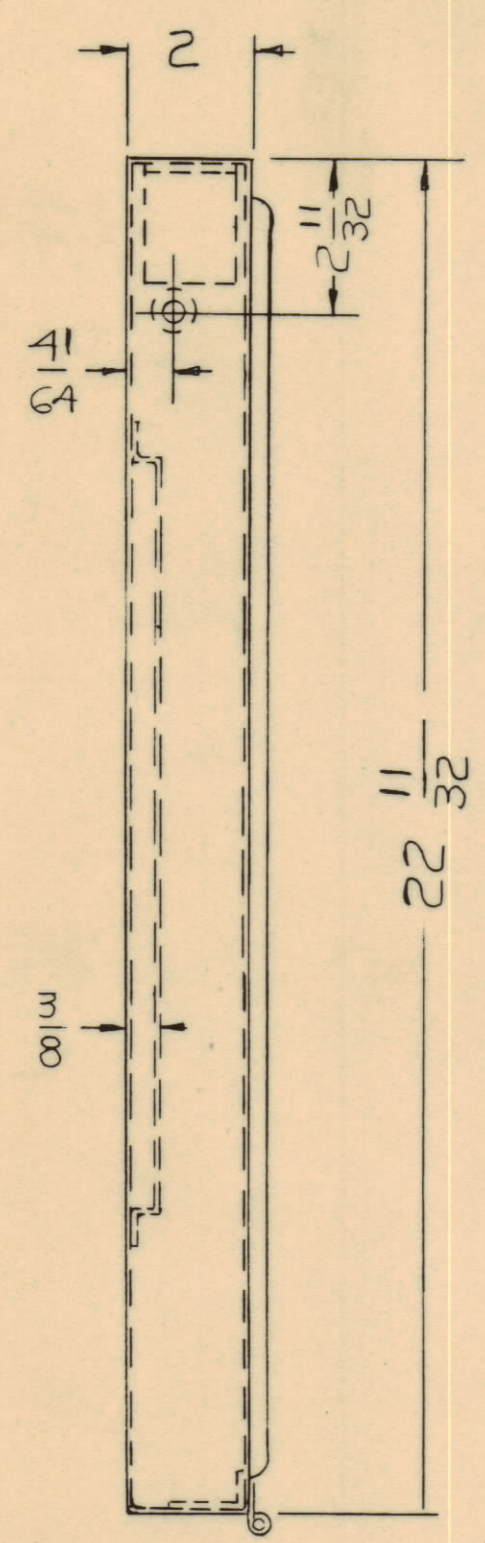
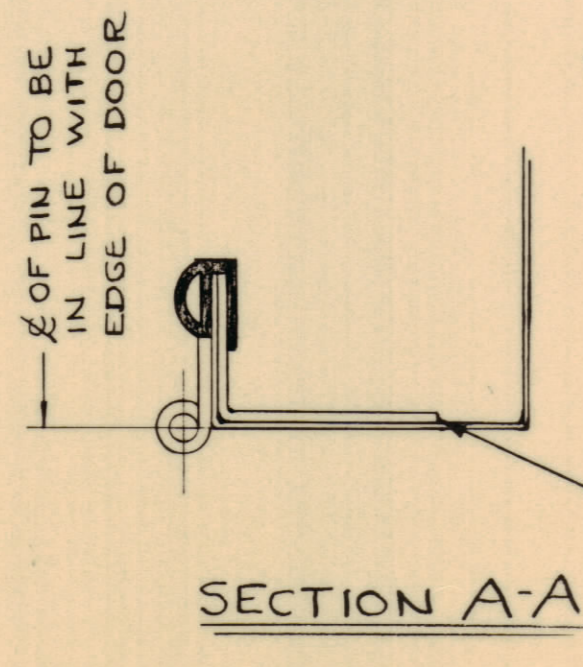
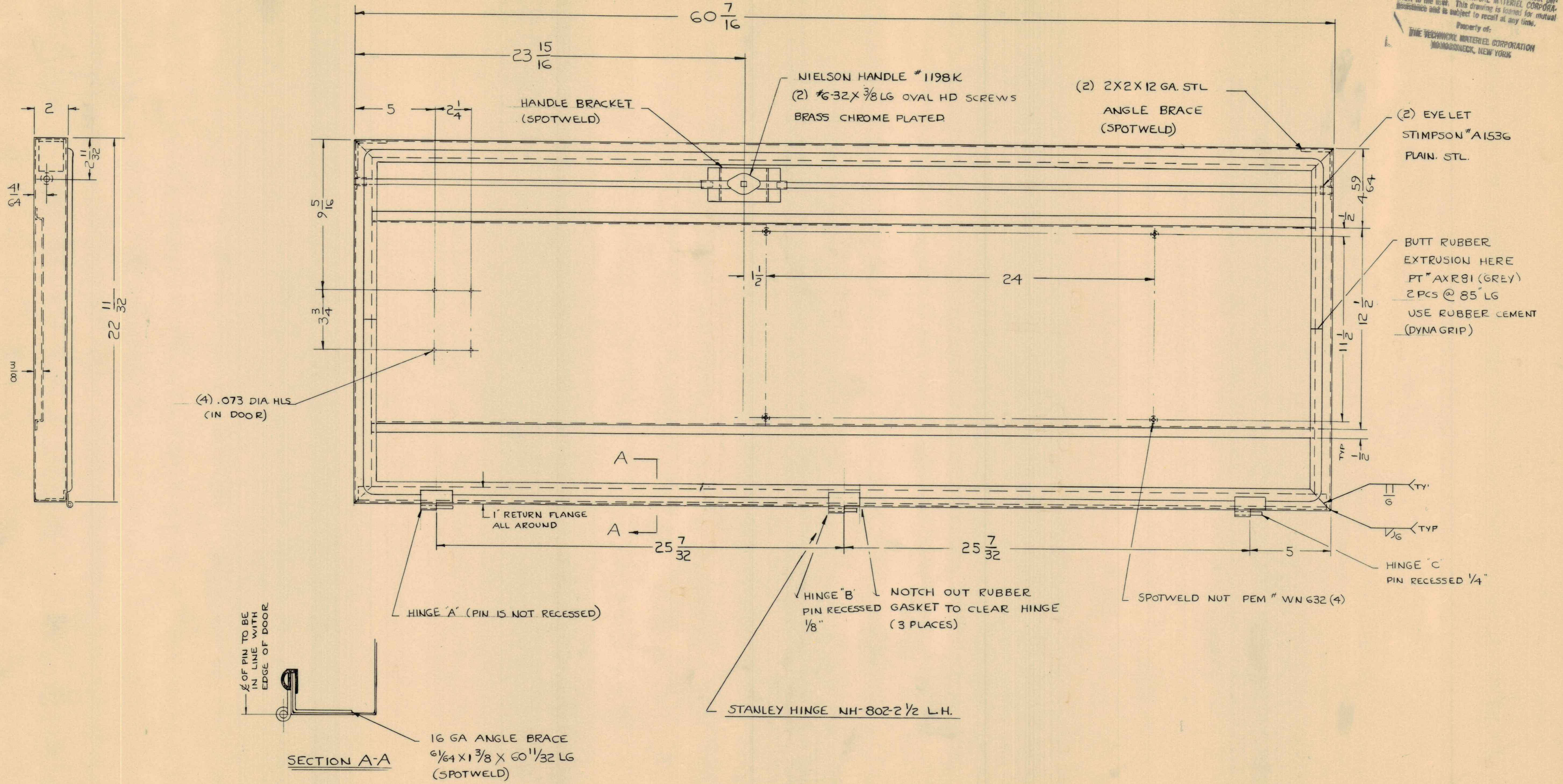


NOTICE TO PERSONS RECEIVING THIS DRAWING
 THE TECHNICAL MATERIEL CORPORATION claims
 proprietary right in the material disclosed herein.
 This drawing is issued in confidence for engineering
 information only and may not be retransmitted or used
 to manufacture anything shown hereon without per-
 mission from THE TECHNICAL MATERIEL CORPORA-
 tion to the user. This drawing is loaned for mutual
 assistance and is subject to recall at any time.
 Property of:
 THE TECHNICAL MATERIEL CORPORATION
 MAMARONECK, NEW YORK



UNLESS OTHERWISE SPECIFIED	
DIMENSIONS ARE IN INCHES AND INCLUDE CHEMICALLY APPLIED OR PLATED FINISHES	
DECIMALS	FRACTIONS
± .05	± 1/64
± .01	± .005
± .005	± 0° 30'

SYM	ZONE	DESCRIPTION	DATE	CH. NO.	DRAFTS	CHECKER	ENG. APP.
UNLESS OTHERWISE SPECIFIED:			SCALE				
DIMENSIONS ARE IN INCHES			A				
TOLERANCES ON			MAXIMUM ALLOWABLE TOLERANCES HAVE BEEN DETERMINED AND ANY DEVIATIONS WILL BE CAUSE FOR REJECTION. REMOVE ALL BURRS & SHARP EDGES				
FRACTIONS ± 1/64		DECIMALS ± .005		ANGLES ± 1/2°			

REQ. UNIT	ITEM	PART NO.	DESCRIPTION	SYMBOL
	1	GPT-10KAC	1-22-62	
MATERIAL		STEEL (MILD)		
TYPE & TEMPER		HRS		
HEAT TREAT. SPEC.		5114 - ZINC CHROMATE PRIMER		
FINISH & SPEC. NO.		5223 - RCAR BLUE GREY SMOOTH ENAMEL		
DRAWN		CHECKED		FINAL APPROVAL
ELEC. DES. APP.		MECH. DES. APP.		SHEET OF
		MS-2850		

MS-2850