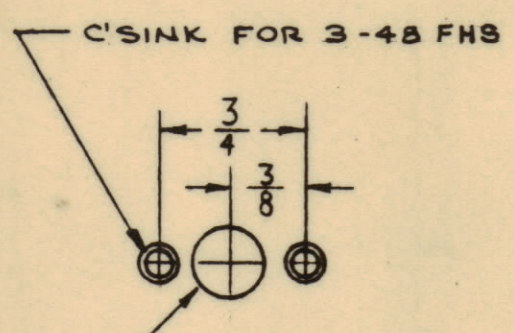
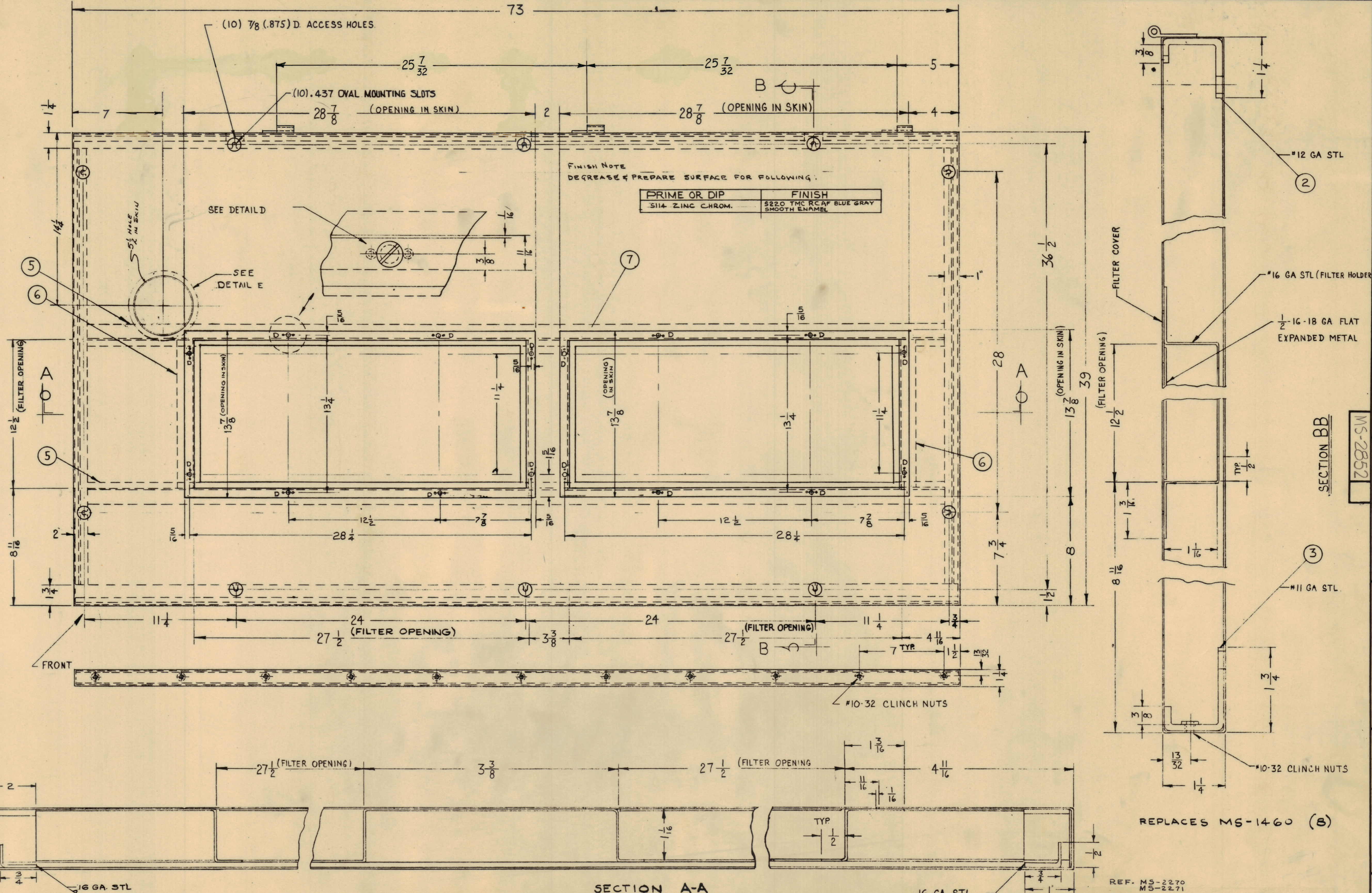


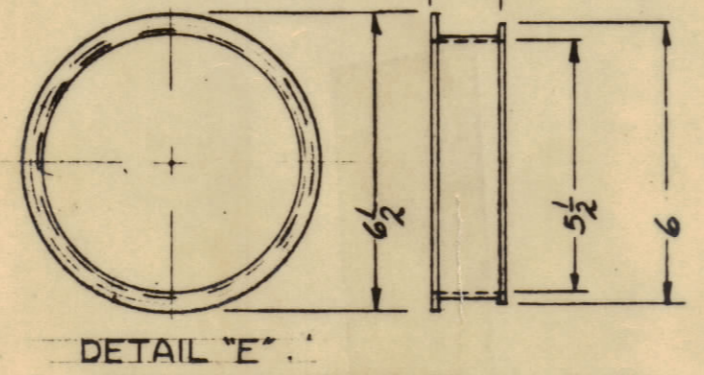
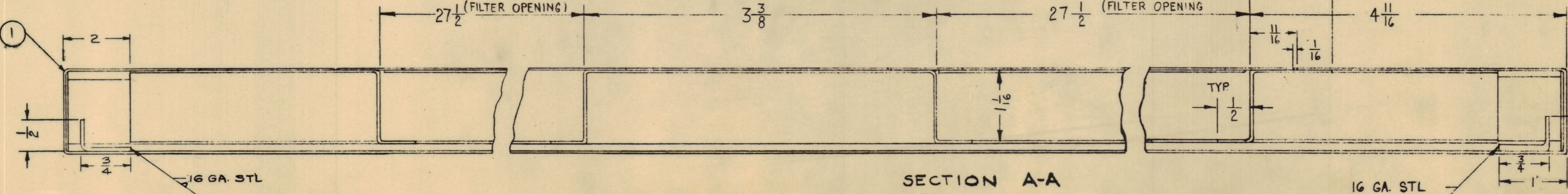
NOTICE TO PERSONS RECEIVING THIS DRAWING

THE TECHNICAL MATERIEL CORPORATION claims proprietary right in the material disclosed hereon. This drawing is issued in confidence for engineering information only and may not be reproduced or used to manufacture anything shown hereon without permission from THE TECHNICAL MATERIEL CORPORATION to the user. This drawing is loaned for mutual assistance and is subject to recall at any time.

Property of:
THE TECHNICAL MATERIEL CORPORATION
MAMARONECK, NEW YORK



"D" DETAIL
HOLE PATTERN FOR
FS-102-1 & FS-110-1
TOOL TM-1



DETAIL "E"

UNLESS OTHERWISE SPECIFIED DIMENSIONS ARE IN INCHES AND INCLUDE CHEMICALLY APPLIED OR PLATED FINISHES		TOLERANCES	
DECIMALS ± .05	FRACTIONS ± 1/64	ANGLES ± 0° 30'	
ISSUE NO.	DESCRIPTION	DATE	CH. NO. DRAFTS CHECKER ENG. APP.
1	COVER, PANEL, RIGHT SIDE SHIPBOARD	1-22-62	
TOLERANCES		SCALE:	
MAXIMUM ALLOWABLE TOLERANCES HAVE BEEN DETERMINED AND ANY DEVIATIONS WILL BE CAUSE FOR REJECTION. REMOVE ALL BURRS AND SHARP EDGES			

REQ. ITEM	PART NO.	DESCRIPTION	SYMBOL
1	20 GA.	STEEL (MILD)	
MATERIAL		HARD ROLLER	
TYPE & TEMPER		HEAT TREAT. SPEC.	
SILAZINC CHROMATE PRIMER S220TMC RCAF BLUE GRAY SMOOTH ENAMEL		FINISH & SPEC. NO.	
GPT-10K (TAC)		1-22-62	
REQ. PER UNIT	MODEL	SECTION	ASBY. NO. DATE
USED ON		DATE	
THE TECHNICAL MATERIEL CORP. MAMARONECK, NEW YORK		DRAWN	
COVER, PANEL, RIGHT SIDE SHIPBOARD		CHECKED	
		FINAL APPROVAL	
		MS-2852	
ELEC. DES. APP.		MECH. DES. APP.	
		SHEET OF	

SECTION BB

MS-2852

REPLACES MS-1460 (B)

REF. MS-2270 MS-2271