

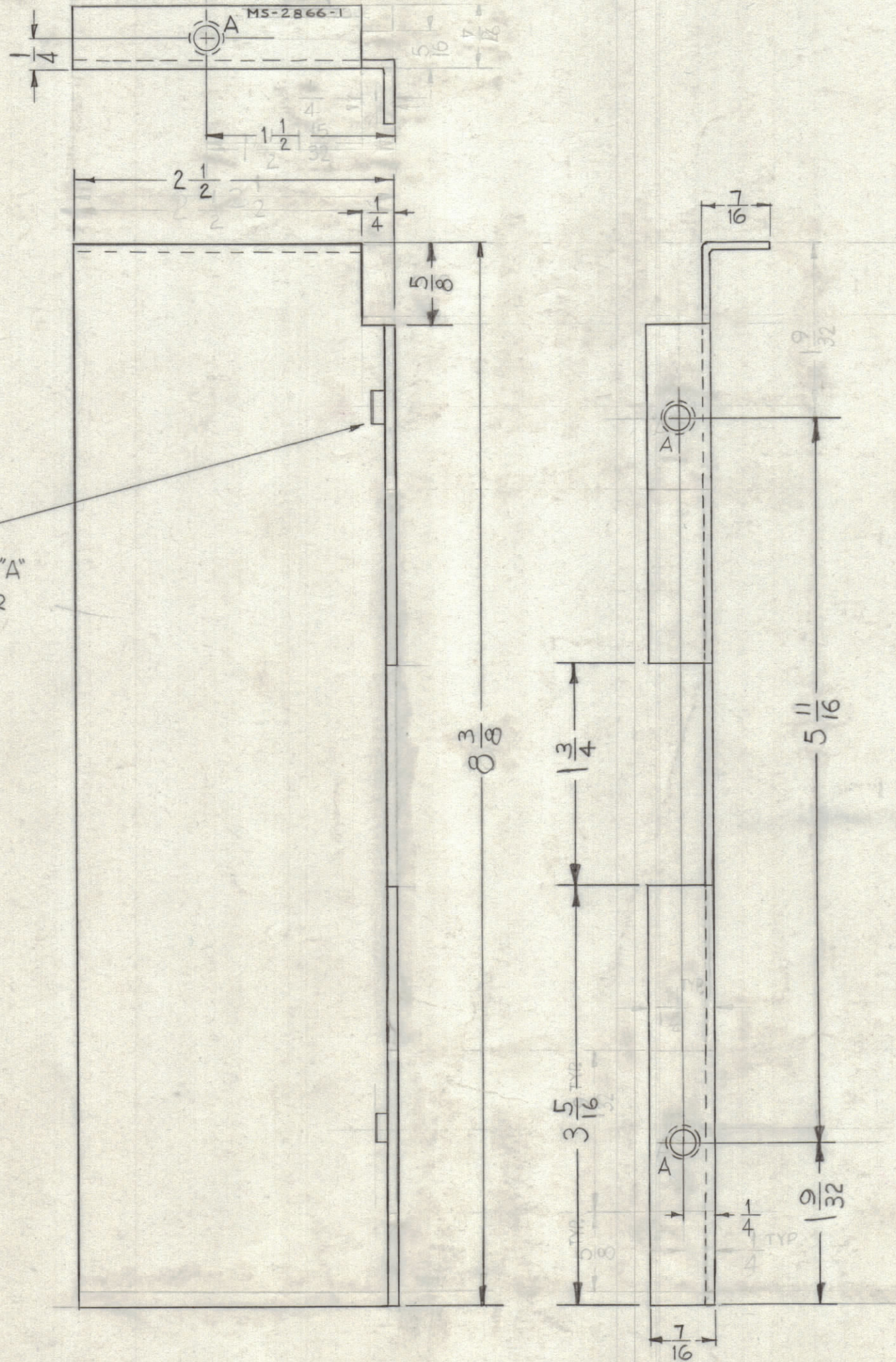
NOTICE TO PERSONS RECEIVING THIS DRAWING

THE TECHNICAL MATERIEL CORPORATION claims proprietary right in the material disclosed hereon. This drawing is issued in confidence for engineering information only and may not be reproduced or used to manufacture any thing shown hereon without permission from THE TECHNICAL MATERIEL CORPORATION to the user. This drawing is loaned for mutual assistance and is subject to recall at any time.

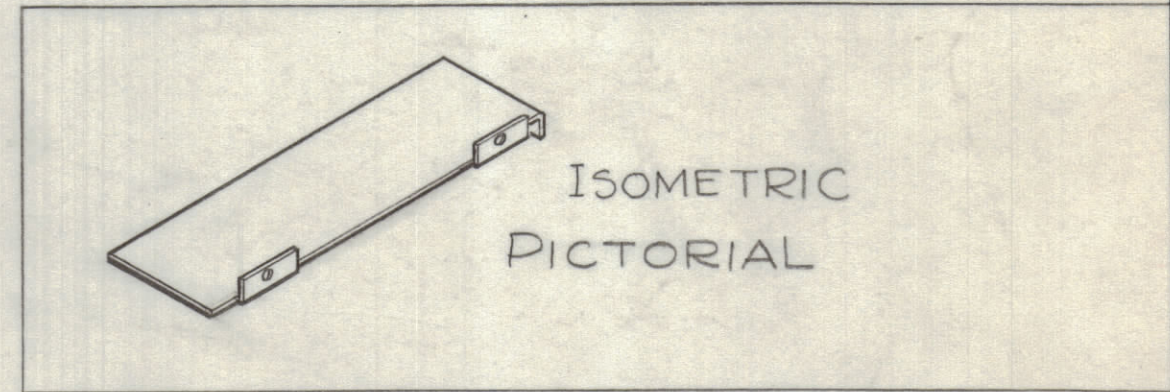
Property of:
THE TECHNICAL MATERIEL CORPORATION
MAMARONECK, NEW YORK

METAL STAMP TMC PART NO.
1/8" HIGH GOTHIC AS SHOWN.

HOLES	DESCRIPTION	REQ.
A	.191 - .194 Dia. (TO MOUNT ITEM 1)	3



①
MOUNT ITEM 1 IN ALL "A"
HOLES, AS SHOWN, AFTER
FINISHING.



USE MATERIAL THICKNESS FOR MAX. RADIUS
ON ALL BENDS UNLESS OTHERWISE SPECIFIED.

MOUNT INSERTS AFTER FINISHING

BLANK SIZE 8 23/32 X 2 27/32

SYM	ZONE	DESCRIPTION	DATE	CH. NO.	DRAFTS	CHECKER	ENG. APP.
UNLESS OTHERWISE SPECIFIED:							
DIMENSIONS ARE IN INCHES			SCALE: Do Not Scale				
TOLERANCES ON			MAXIMUM ALLOWABLE TOLERANCES HAVE BEEN DETERMINED AND ANY DEVIATIONS WILL BE CAUSE FOR REJECTION. REMOVE ALL BURRS & SHARP EDGES				
FRACTIONS ± 1/64		DECIMALS ± .005	ANGLES ± 1/2°				

REQ. PER UNIT	MODEL	SECTION	ASS'Y. NO.	DATE
1	HAF-1			7-26-62
USED ON				

REQ.	ITEM	PART NO.	DESCRIPTION	SYMBOL
3	1	NT-129-632-4	NUT, ROUND, SWAGE TYPE	A
		.064	STOCK SIZE	
		ALUMINUM	MATERIAL	
		5052-H32	TYPE & TEMPER	
		S-404-YELLOW IRIDITE	HEAT TREAT. SPEC.	
			FINISH & SPEC. NO.	
			ELEC. DES. APP.	
			MECH. DES. APP.	
			SHEET OF	
			MS-2866	