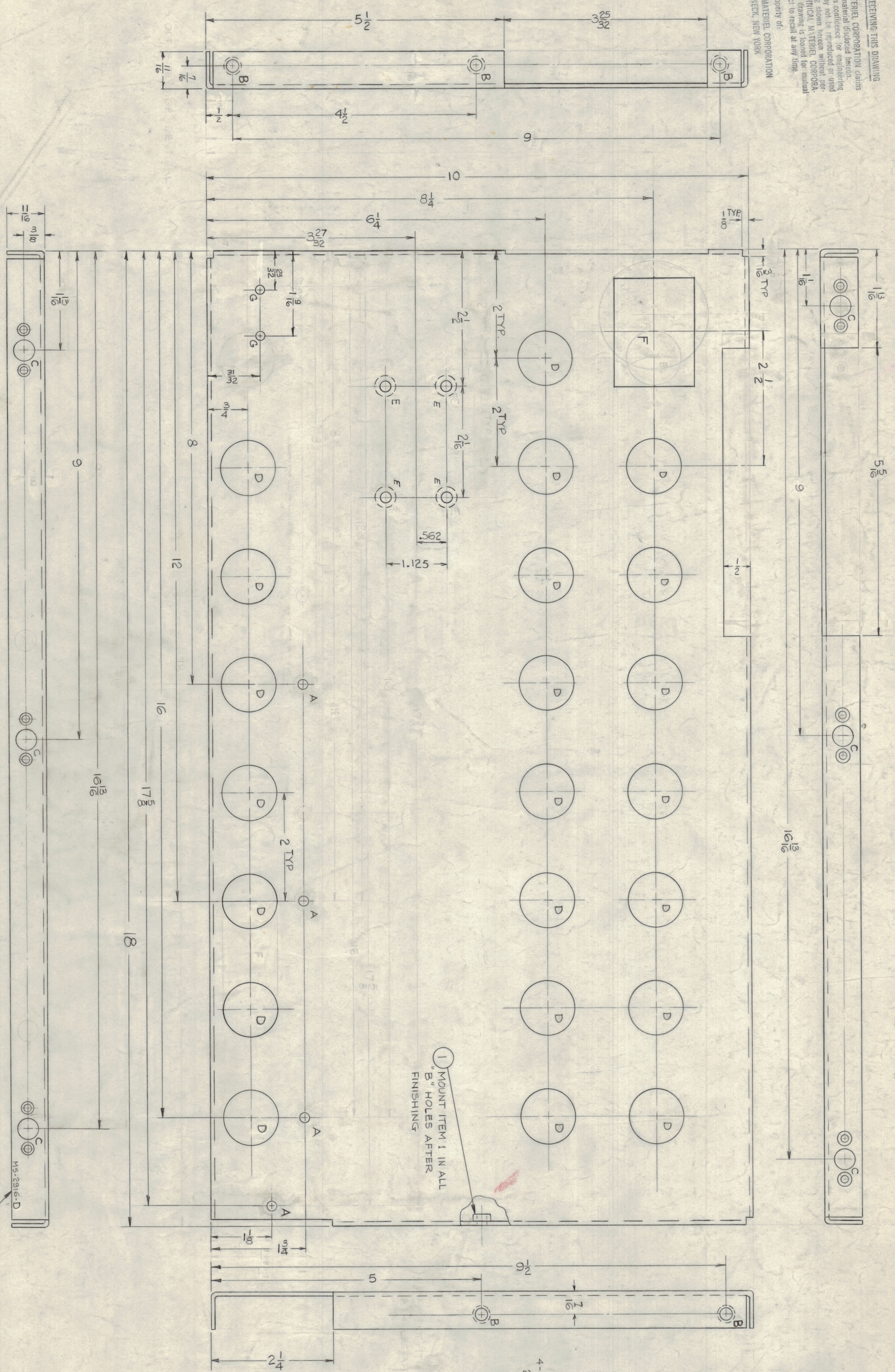
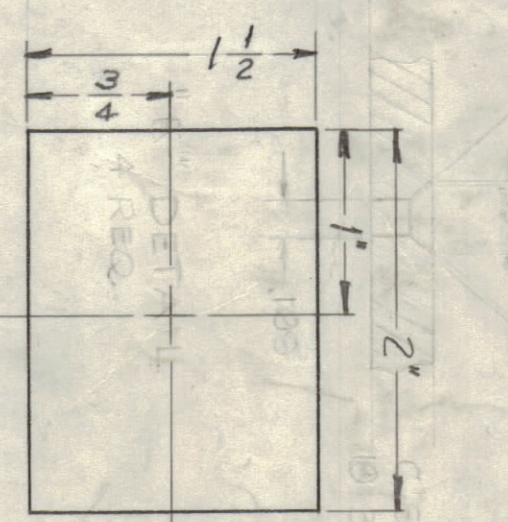
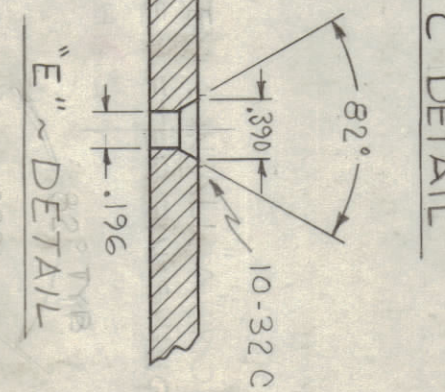
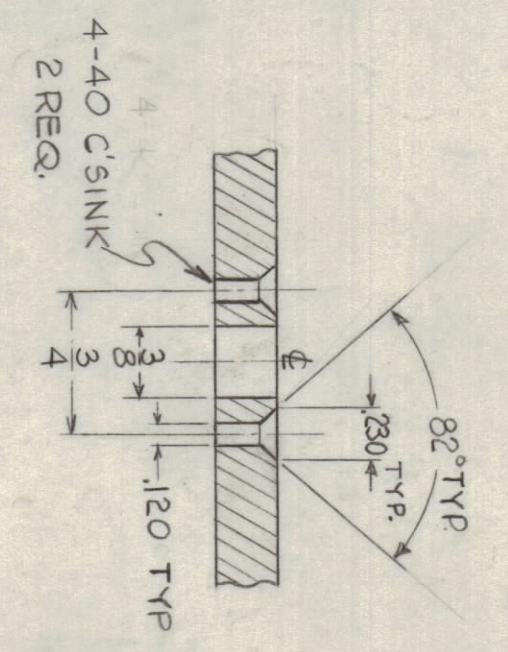


NOTICE TO PERSONS RECEIVING THIS DRAWING  
 THE TECHNICAL MATERIAL CORPORATION claims  
 proprietary right in the material disclosed herein.  
 This drawing is issued in confidence for engineering  
 information only and should not be reproduced or used  
 to manufacture or assemble without the written per-  
 mission from the TECHNICAL MATERIAL CORPORATION.  
 This drawing is loaned for mutual  
 assistance and is subject to recall at any time.

Property of:  
 THE TECHNICAL MATERIAL CORPORATION  
 MAMARONECK, NEW YORK



HOLE	DESCRIPTION	QTY
A	1/16 DIA.	4
B	.221-.224 DIA	5
C	SEE DETAIL	6
D	1" DIA.	22
E	SEE DETAIL	4
F	SEE DETAIL	1
G	0.170 DIA.	2



METAL STAMPING PART NO. 1  
 1/8" HIGH GOTHIC AS SHOWN

USE MATERIAL THICKNESS FOR MAX. RADII  
 ON ALL BENDS UNLESS OTHERWISE SPECIFIED  
 MOUNT INSERTS AFTER FINISHING

SYMBOL	DESCRIPTION	DATE	CH. NO.	BY	CHECKED	ENG. APP.
D	ADDED (2) V-GROOVES	7/31/63	9671	ALC		
C	0.7" DETAIL W/IN 2" DIA. HOLE	10/30/61	7576			
B	10" HOLE DELETED 10" HOLE PIPED	10/24/62	7487			
DB	4 (D) HOLES WERE 1/16" DIA	9/7/62	7343			

UNLESS OTHERWISE SPECIFIED	DIMENSIONS ARE IN INCHES AND INCLUDE	CHEMICALLY APPLIED OR PLATE FINISHES
TOLERANCES	FRACTIONS 1/64	DECIMALS 1.005
ANGLES	1/2°	

REQ. ITEM	PART NO.	DESCRIPTION	SYMBOL
5	NT-129-832-4	NUT, ROUND, SWAGE TYPE	B
	.081	THE TECHNICAL MATERIAL CORP.	
	ALUMINUM	MAMARONECK, NEW YORK	

REG. UNIT	MODEL	SECTION	ASSY. NO.	DATE	MATERIAL	HEAT TREAT. SPEC.	FINISH & SPEC. NO.	DRW. BY	CHECKED	FINAL APPROVAL	SHEET	OF	DIFFERENCE NO. 1003
1	HFR-1/0			7-24-62	5052-H32		5404 YEL TRIDITE	VR		MS-2916	D		