

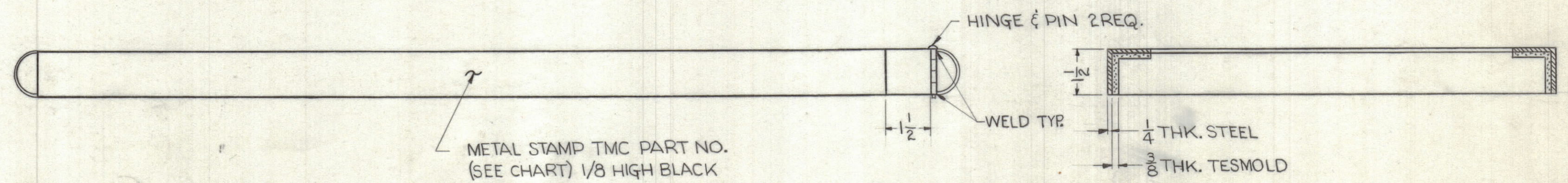
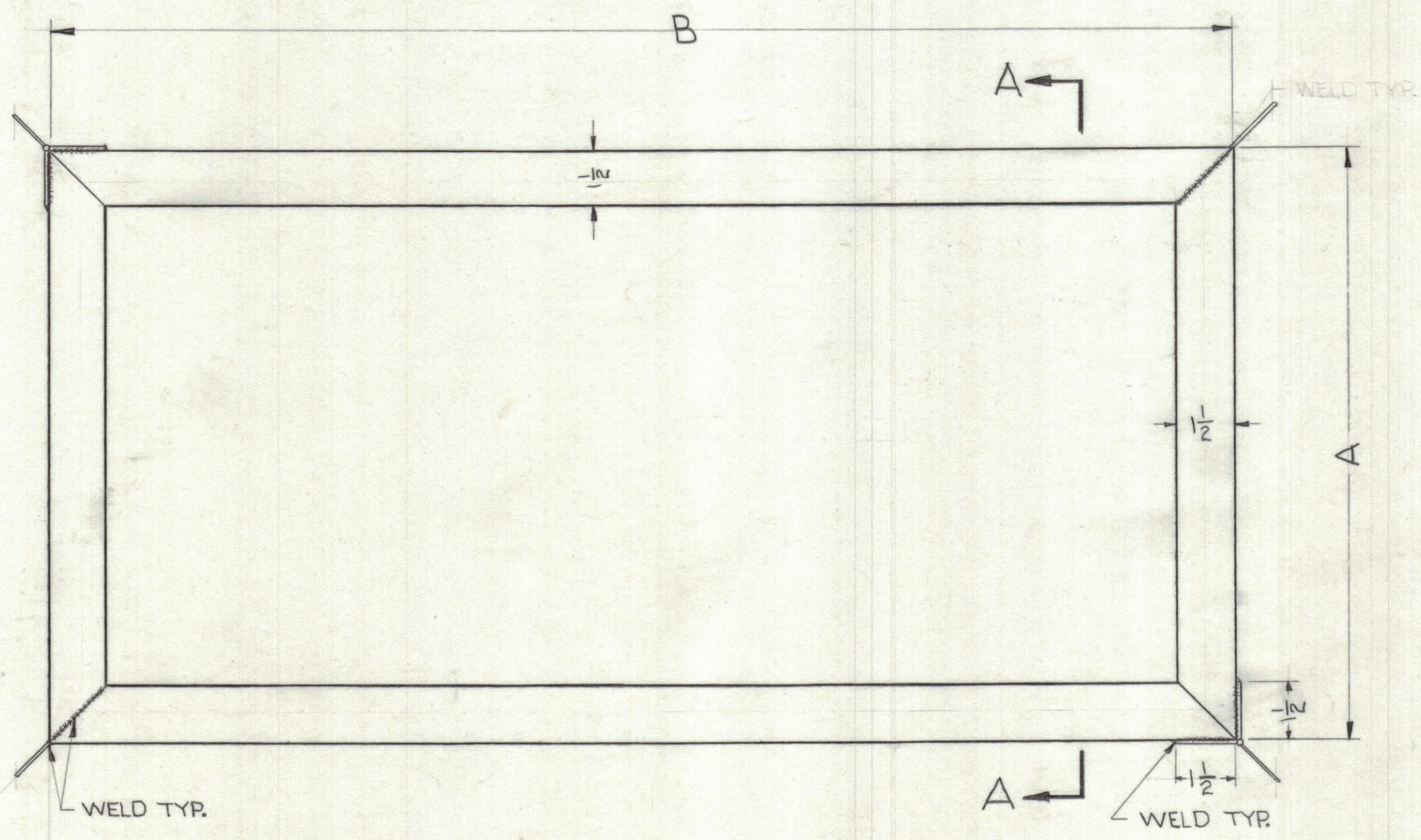
MS2924 \emptyset

NOTICE TO PERSONS RECEIVING THIS DRAWING

THE TECHNICAL MATERIEL CORPORATION claims proprietary right in the material disclosed herein. This drawing is issued in confidence for engineering information only and may not be reproduced or used to manufacture anything shown hereon without permission from THE TECHNICAL MATERIEL CORPORATION to the user. This drawing is loaned for mutual assistance and is subject to recall at any time.

Property of:
THE TECHNICAL MATERIEL CORPORATION
MAMARONECK, NEW YORK

	A	B	METAL STAMP #
10K	40"	54"	MS2924-1
40K	40"	10'-1"	MS-2924-2



METAL STAMP TMC PART NO.
(SEE CHART) 1/8 HIGH BLACK
GOTHIC ON THIS SIDE

SECTION A-A

SYM	ZONE	DESCRIPTION	DATE	CH. NO.	DRAFTS	CHECKER	ENG. APP.
\emptyset		ORIGINAL RELEASE FOR PRODUCTION	4/23/69				
UNLESS OTHERWISE SPECIFIED:			SCALE DO NOT SCALE				
DIMENSIONS ARE IN INCHES			MAXIMUM ALLOWABLE TOLERANCES HAVE BEEN DETERMINED AND ANY DEVIATIONS WILL BE CAUSE FOR REJECTION. REMOVE ALL BURRS & SHARP EDGES				
TOLERANCES ON							
FRACTIONS $\pm 1/64$			DECIMALS $\pm .005$		ANGLES $\pm 1/2^\circ$		

REQ. PER UNIT	MODEL	SECTION	ASS'Y. NO.	DATE
	SYM2002			3-23-62

REQ. ITEM	PART NO.	DESCRIPTION	SYMBOL
	SEE DWG.	THE TECHNICAL MATERIEL CORP. MAMARONECK, NEW YORK	
	STOCK SIZE		
	SEE DWG.	TIE-DOWN FRAME FOR 10K & 40K	
	MATERIAL		
		R. Furchin	4/23/69
		DRAWN	CHECKED
			FINAL APPROVAL
			MS2924 \emptyset
			SHEET OF
			DEFIANCE NO. 1020 3892