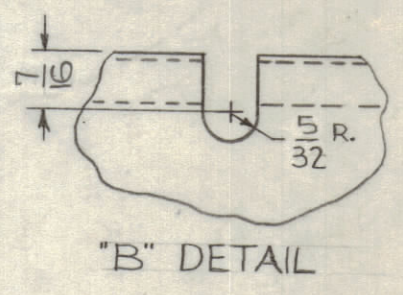


MOUNT ITEMS 1 & 2 IN ALL "A" HOLES AS SHOWN AFTER FINISHING.

LEGEND		
HOLE	DESCRIPTION	REQ
A	1/4 DIA.	6
B	SEE DETAIL	2



METAL STAMP TMC PART NO. 1/8 HIGH BLACK GOTHIC.

USE MATERIAL THICKNESS FOR MAX. RADIUS ON ALL BENDS UNLESS OTHERWISE SPECIFIED

SYM	ZONE	DESCRIPTION	DATE	CH. NO.	DRAFTS	CHECKER	ENG. APP.
D	E1	12-1/8 DIM WAS 12-3/16	10/1/63	10013	AD	JMS	JMS
	D1	IN DETAIL 7/16 WAS 3/8 & 5/32 WAS 9/64					
C	E4	PERFORATED AREA CHANGED TO STAGGERED HOLES	9-23-63	9981	G.D.L.	JMS	JMS
B	A2	ITEN#(2) WAS FS-109	7-19-63	9568	SL	JMS	JMS
A	B1	BLANK SIZE REF: MS-1748-10, DELETED	4-25-63	8912	JMS	JMS	JMS

UNLESS OTHERWISE SPECIFIED:  
 DIMENSIONS ARE IN INCHES  
 TOLERANCES ON  
 FRACTIONS ± 1/64    DECIMALS ± .005    ANGLES ± 1/2°  
 SCALE DO NOT SCALE  
 MAXIMUM ALLOWABLE TOLERANCES HAVE BEEN DETERMINED AND ANY DEVIATIONS WILL BE CAUSE FOR REJECTION. REMOVE ALL BURRS & SHARP EDGES

REQ. PER UNIT	MODEL	SECTION	ASS'Y. NO.	DATE
1	TRX-1			3-28-62

6	2	FS-109-3	RING, STUD RETAINING	A
6	1	FS-110-1	STUD, SLOTTED HEAD	A
REQ.	ITEM	PART NO.	J. STRUMER DESCRIPTION	SYMBOL
		.051	THE TECHNICAL MATERIEL CORP.	
		STOCK SIZE	MAMARONECK, NEW YORK	
		MALUM, PERF.	COVER, BOTTOM	
		MATERIAL		
		5052-H32	G. SENCEN	JMS 3/12/63
		TYPE & TEMPER	DRAWN	CHECKED
		5-404 YEL. IRIDITE	JMS	D. M... 3-12-63
		FINISH & SPEC. NO.	ELEC. DES. APP.	MECH. DES. APP.
				MS-2939 D
				SHEET OF