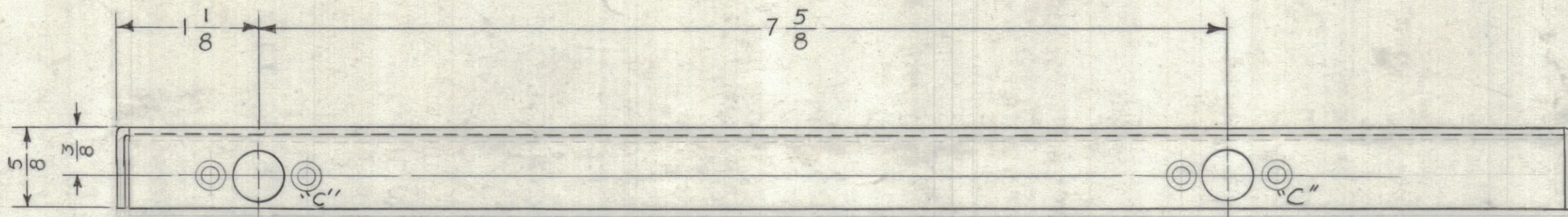


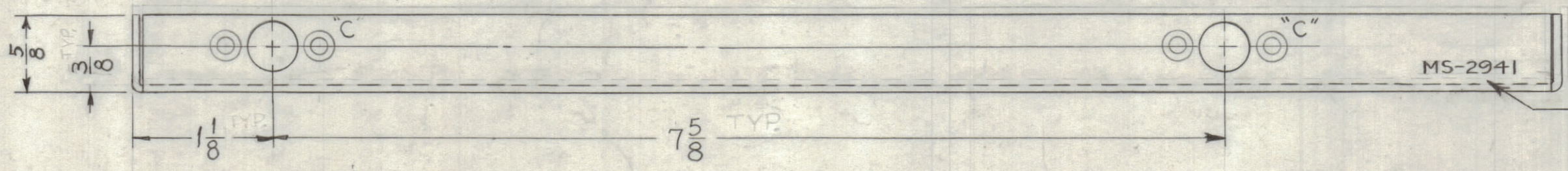
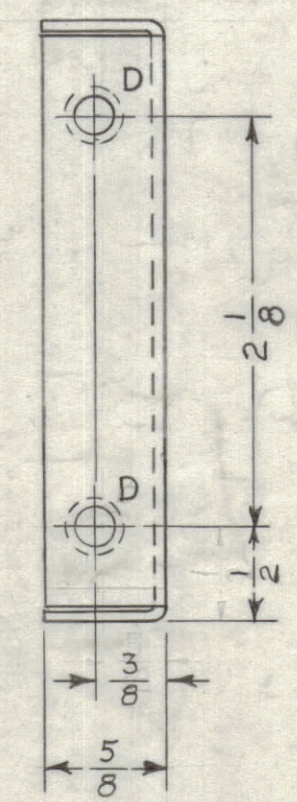
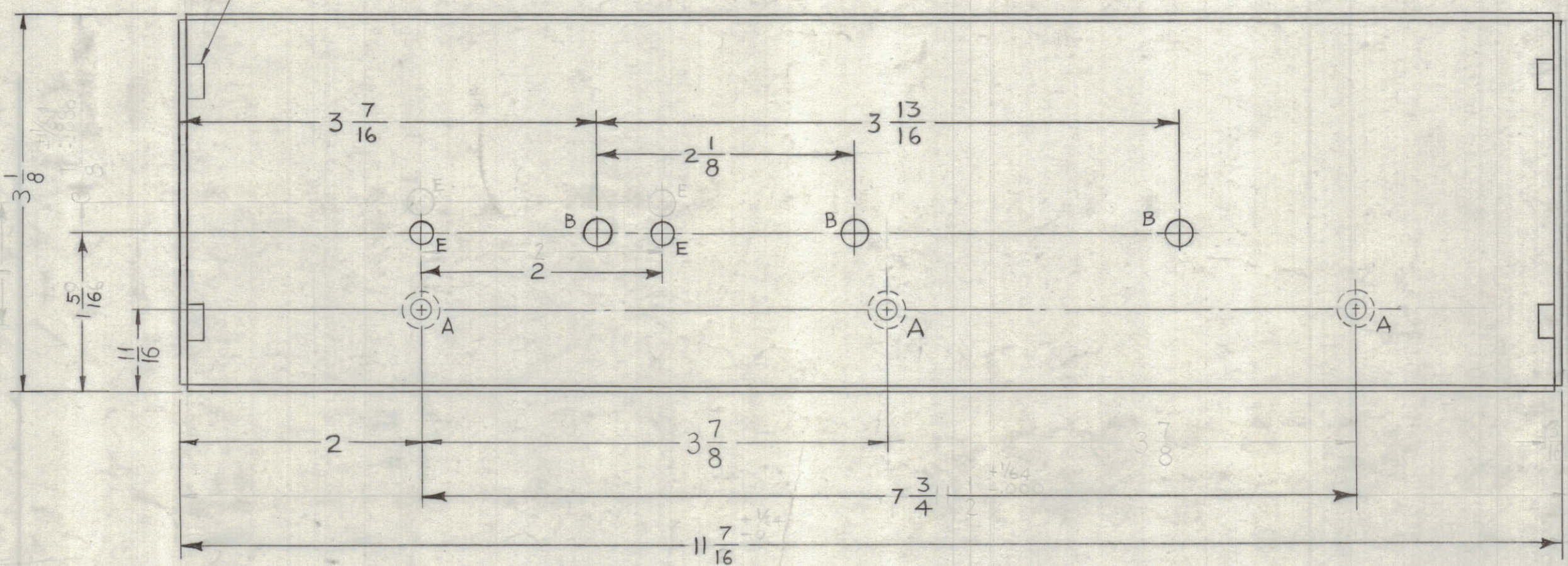
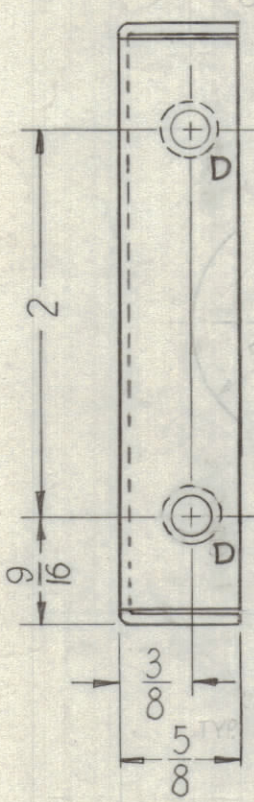
LEGEND		
HOLES	DESCRIPTION	REQ.
A	DR 5/32 & CSK 82° TO .280 DIA	3
B	7/32 DIA	3
C	SEE DETAIL	4
D	.191 - .194 DIA	4
E	13/64 DIA	2



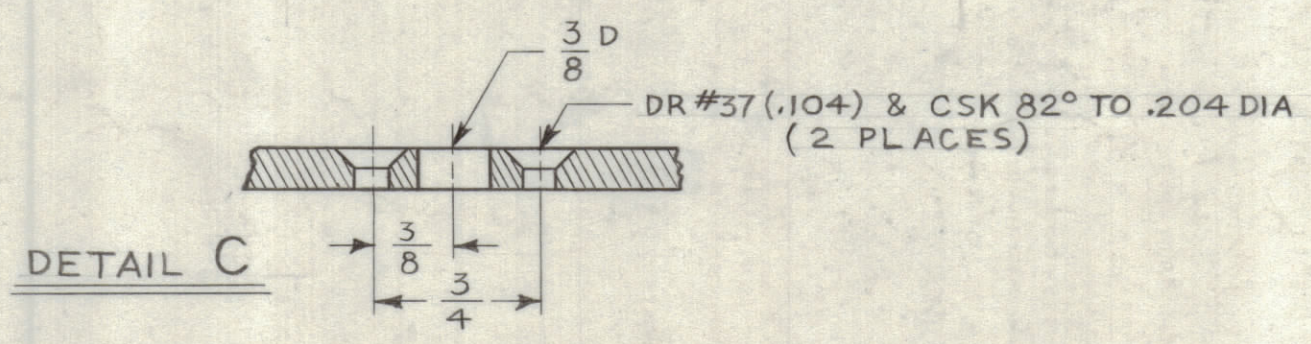
DR #CSINK FOR
-150- 3-48 EHS (2REQ)
C DETAIL

MOUNT ITEM 1 IN ALL "D" HOLES
RE-SHOW AFTER FINISHING

1 INSERT IN ALL "E" HOLES (SEE NOTE 2)



METAL STAMP TMC PART N°
1/8 HIGH GOTHIC AS SHOWN.



NOTES:
1. USE MATERIAL THICKNESS FOR MAX. RADIUS ON RADIUS
ALL BENDS UNLESS OTHERWISE SPECIFIED, WISE SPECIFIED
2. MOUNT INSERTS ITEM 1 AFTER FINISH.

SYM	ZONE	DESCRIPTION	DATE	CH. NO.	DRAFTS	CHECKER	ENG. APP.
UNLESS OTHERWISE SPECIFIED:							
DIMENSIONS ARE IN INCHES							
TOLERANCES ON							
FRACTIONS ± 1/64 DECIMALS ± .005 ANGLES ± 1/2°							
SCALE							
MAXIMUM ALLOWABLE TOLERANCES HAVE BEEN DETERMINED AND ANY DEVIATIONS WILL BE CAUSE FOR REJECTION. REMOVE ALL BURRS & SHARP EDGES							

REQ. PER UNIT	MODEL	SECTION	ASS'Y. NO.	DATE
1	TRX-1			3-28-62

4	1	NT-129-632-4	NUT, ROUND SWAGE TYPE	D
REQ. ITEM	PART NO.		J. STRUMER	DESCRIPTION
.064 THK.		THE TECHNICAL MATERIEL CORP.		
STOCK SIZE		MAMARONECK, NEW YORK		
ALUMINUM		PLATE, SIDE, LEFT		
MATERIAL				
5052-H32		DRAWN <i>JMA</i> 3/12/62		
TYPE & TEMPER		CHECKED <i>D. Hoshart</i>		
S-404 YELLOW IRIDITE		3-12-62		
FINISH & SPEC. NO.		FINAL APPROVAL <i>BSP</i>		
		MS-2941		
		SHEET OF		