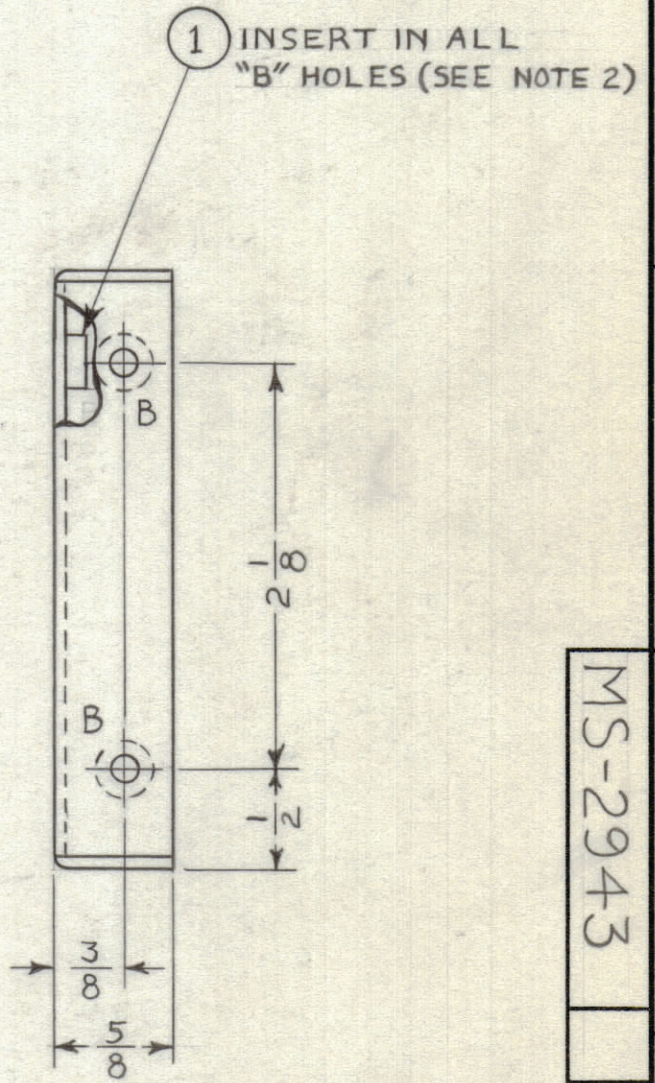
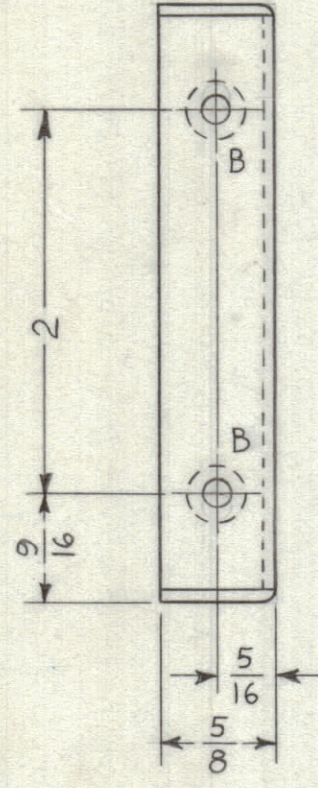
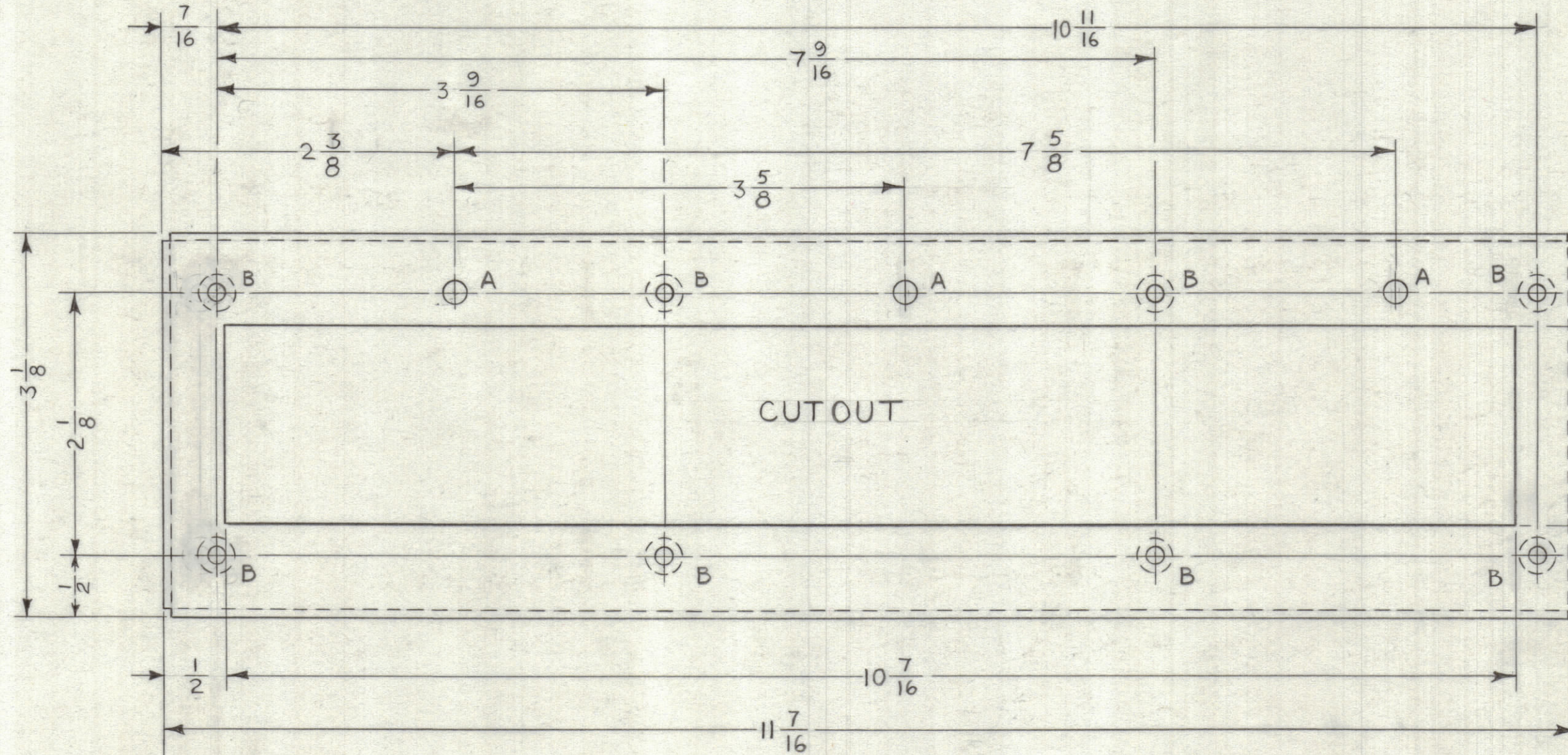
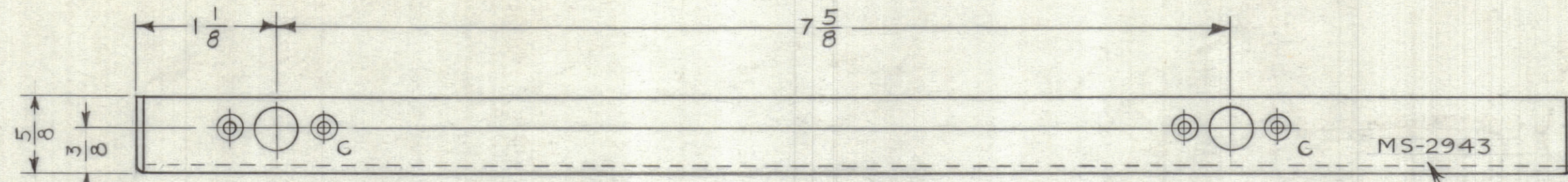
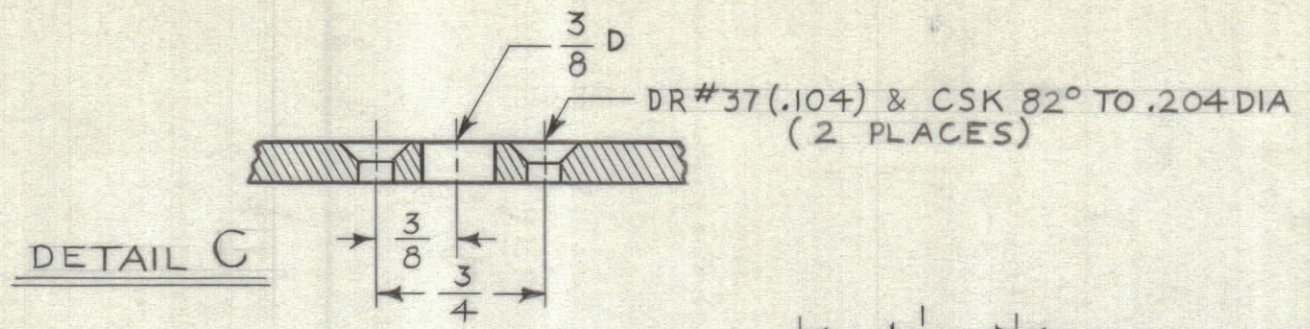


LEGEND		
HOLE	DESCRIPTION	REQ'D
A	11/64 DIA	3
B	.191-.194 DIA	12
C	SEE DETAIL	4
D	DR #27 (.144) CSK 82° TO .280 DIA	3

REVISIONS							
ZONE	SYM	DESCRIPTION	DATE	E.M.N. NO.	DRAFT	CHKD	APPD



MS-2943

METAL STAMP TMC P/N 1/8 HIGH BLACK GOTHIC

CUTOUT

NOTES:  
 1. USE MATERIAL THICKNESS FOR MAX. RADIUS ON ALL BENDS UNLESS OTHERWISE SPECIFIED.  
 2. MOUNT INSERTS ITEM ① AFTER FINISH.

UNLESS OTHERWISE SPECIFIED, MAX. RADIUS ON ALL BENDS  
 2. MOUNT INSERTS ITEM ① AFTER FINISH.

REQ'D.	ITEM	PART NUMBER	DESCRIPTION	SYMBOL
12	I	NT-129-632-4	NUT, ROUND, SWAGE TYPE	B

J. STRUMER LIST OF MATERIAL

MATERIAL	.064 ALUM. 5052-H32	THE TECHNICAL MATERIEL CORP. MAMARONECK, NEW YORK	
FINISH	YELLOW IRIDITE PER TMC SPEC S-404	TITLE CHA BRACKET, RIGHT SIDE/RIGHT SIDE	

1	TRX-1	ASS'Y. NO.	
Q'TY./UNIT	MODEL USED ON	CODE	
SCALE	FULL		

THE CONTENTS OF THIS DRAWING ARE THE EXCLUSIVE PROPERTY OF THE TECHNICAL MATERIEL CORP. ITS UNAUTHORIZED USE OR REPRODUCTION IN WHOLE OR IN PART IS STRICTLY FORBIDDEN.

DECIMALS	FRACTIONS	ELECT. DES.	DATE	FINAL APPROVAL	DATE
.X ± .05	± 1/64				
.XX ± .01	ANGLES				
.XXX ± .005	± 0° 30'				

UNLESS OTHERWISE SPECIFIED, DIMENSIONS ARE IN INCHES AND INCLUDE CHEMICALLY APPLIED OR PLATED FINISHES.

CHECKED	DATE	
MECH. DES.	DATE	

MS-2943

NOTES

MS-2943