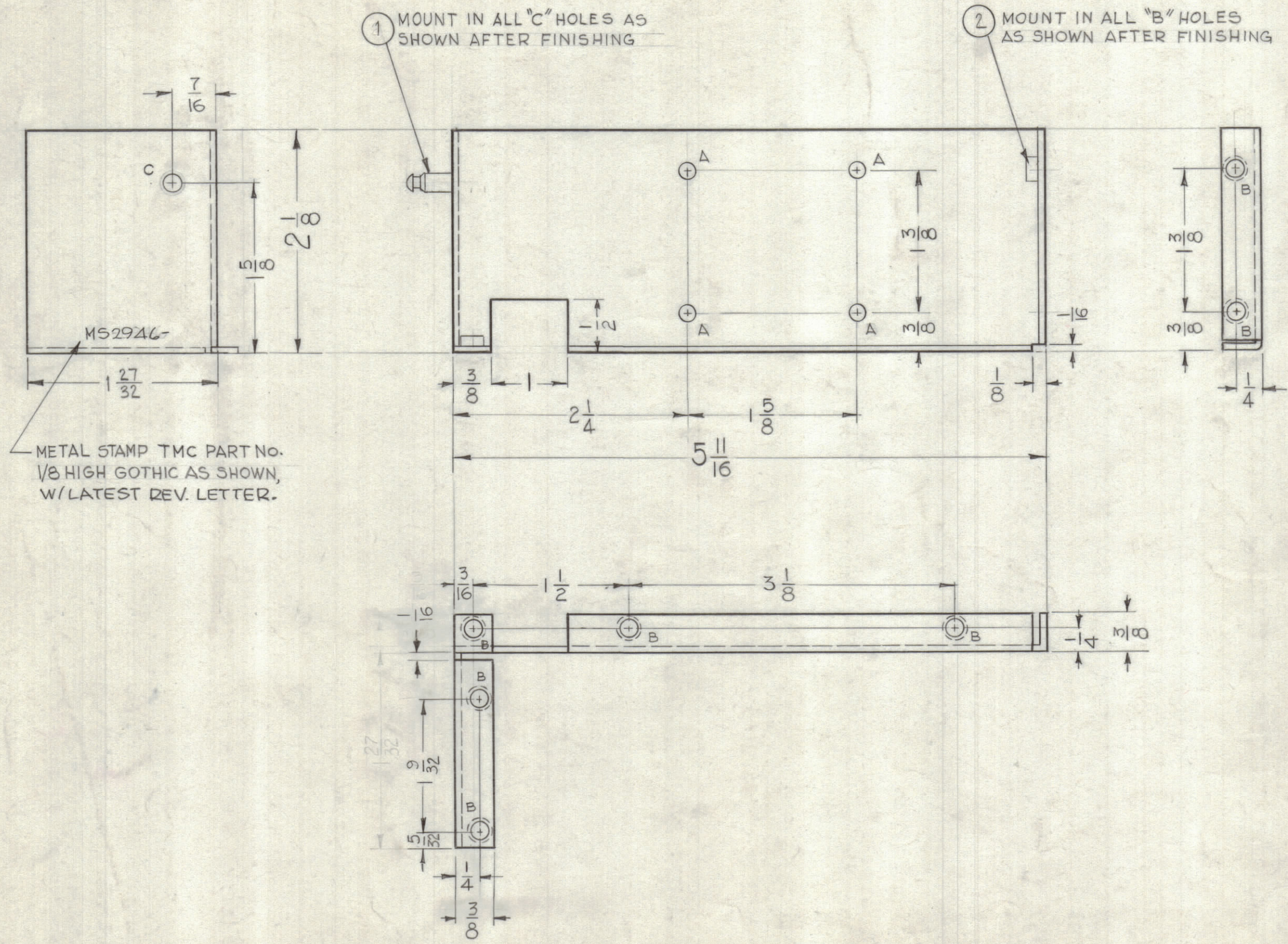


NOTICE TO PERSONS RECEIVING THIS DRAWING
 THE TECHNICAL MATERIEL CORPORATION claims proprietary right in the material disclosed hereon. This drawing is issued in confidence and is for engineering information only and may not be reproduced or used to manufacture anything shown hereon without permission from THE TECHNICAL MATERIEL CORPORATION to the user. This drawing is loaned for mutual assistance and is subject to recall at any time.
 Property of:
 THE TECHNICAL MATERIEL CORPORATION
 MAMARONECK, NEW YORK

LEGEND		
HOLE	DESCRIPTION	REQ.
A	9/64 DIA.	4
B	.161-164 DIA.	7
C	.158 DIA.	1



METAL STAMP TMC PART NO. $\sqrt{8}$ HIGH GOTHIC AS SHOWN, W/LATEST REV. LETTER.

USE MATERIAL THICKNESS FOR MAX. RADIUS ON ALL BENDS UNLESS OTHERWISE SPECIFIED

7	2	NT-129-440-3	NUT, ROUND, SWAGE TYPE	B
1	1	TE-169-1	FEED THRU, TEFLON	C
REQ.	ITEM	PART NO.	DESCRIPTION	SYMBOL
		.051	STOCK SIZE	
		ALUMINUM	MATERIAL	
		5052-H32	TYPE & TEMPER	
		3500	SECTION	
		8-15-62	DATE	
		5404 YELLOW IRIDITE	FINISH & SPEC. NO.	
			HEAT TREAT. SPEC.	

THE TECHNICAL MATERIEL CORP. MAMARONECK, NEW YORK	
SHIELD, RF #1 3500 DECK	
G.D.L. DRAWN	H.W. CHECKED
FINAL APPROVAL B.P.	
MS 2946 A	

A		"A" HOLE WAS .166, REV. TMC PT. NO.	11.28.66	17329	WHD	QC/S	97
SYM	ZONE	DESCRIPTION	DATE	CH. NO.	DRAFTS	CHECKER	ENG. APP.
UNLESS OTHERWISE SPECIFIED:			SCALE DO NOT SCALE				
DIMENSIONS ARE IN INCHES			MAXIMUM ALLOWABLE TOLERANCES HAVE BEEN DETERMINED AND ANY DEVIATIONS WILL BE CAUSE FOR REJECTION. REMOVE ALL BURRS & SHARP EDGES				
TOLERANCES ON FRACTIONS $\pm 1/64$ DECIMALS $\pm .005$ ANGLES $\pm 1/2^\circ$							

1	HF 8-1	3500		8-15-62
REQ. PER UNIT	MODEL	SECTION	ASS'Y. NO.	DATE
USED ON				