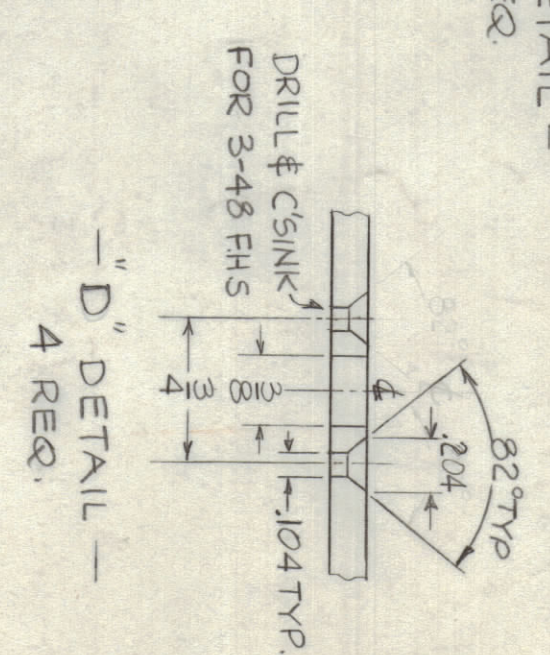
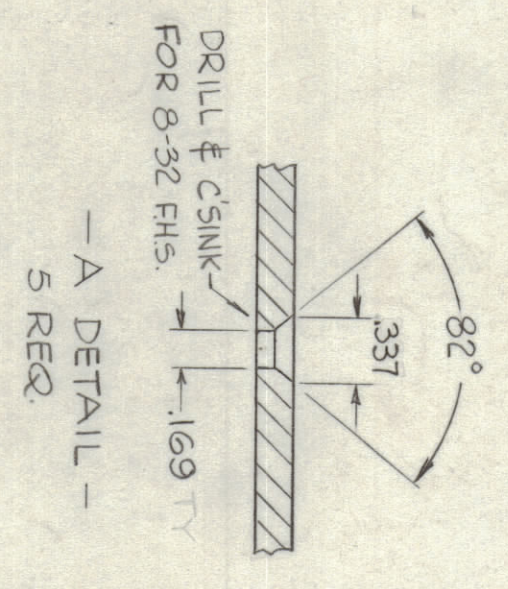
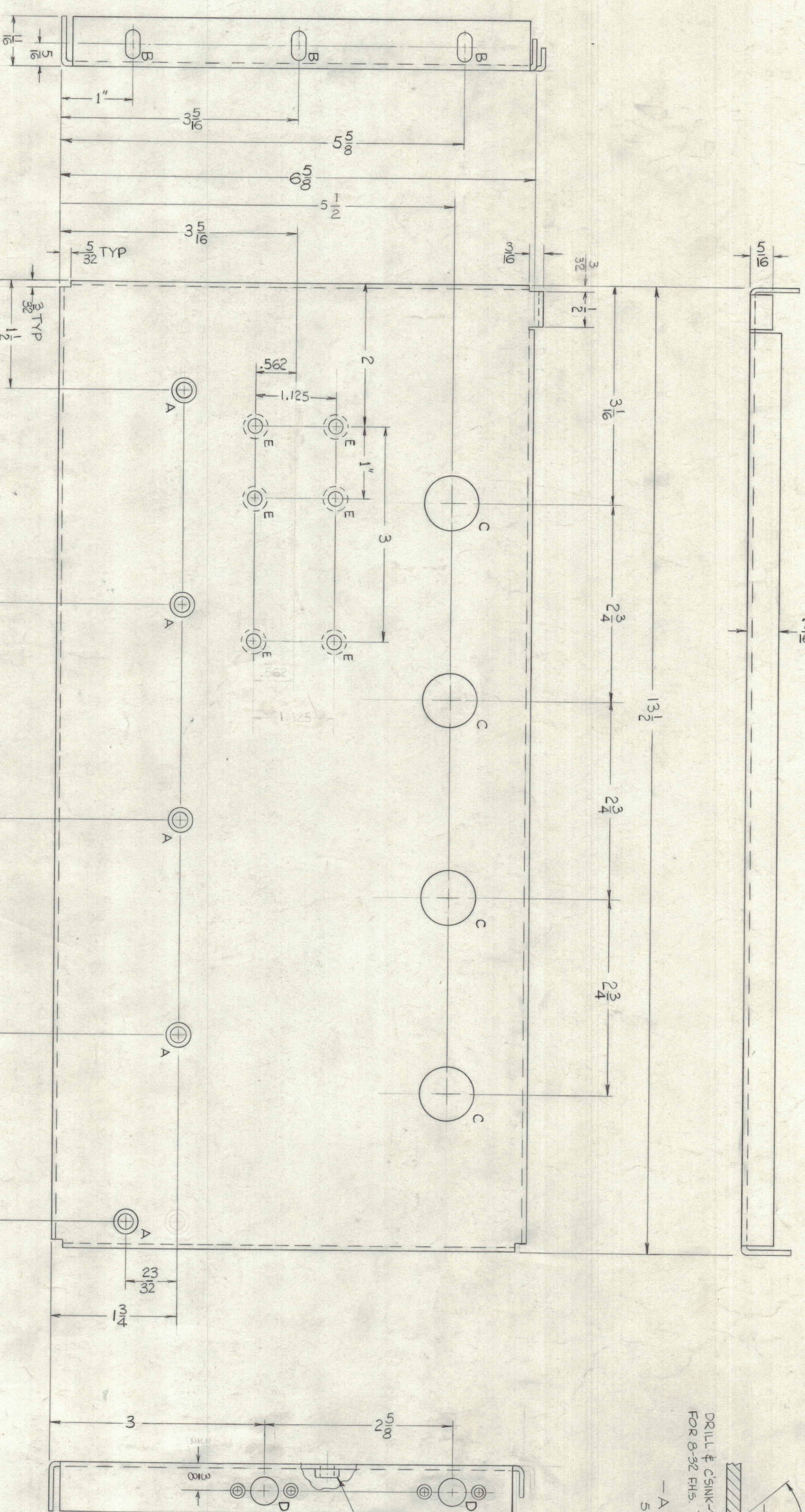


NOTE TO PERSONS RECEIVING THIS DRAWING
 THE TECHNICAL MATERIAL CORPORATION claims
 proprietary right in the material disclosed herein
 This drawing only and may not be reproduced or used
 to manufacture anything shown herein without per-
 mission from THE TECHNICAL MATERIAL CORPORA-
 TION to the user. This drawing is loaned for mutual
 assistance and is subject to recall at any time.

Property of:
 THE TECHNICAL MATERIAL CORPORATION
 MANARONCK, NEW YORK

HOLE	DESCRIPTION	REQ
A	SEE C/SINK DETAIL	5
B	1 3/4" X 1/32" SLOTS	3
C	3/4" DIA.	4
D	SEE DETAIL	4
E	.250-.253 DIA. HOLE	4



1 MOUNT ITEM 1 IN ALL 'E' HOLES AS SHOWN AFTER FINISHING.

METAL STAMP TMC
 PART NO. 8 HIGH
 GOTHIC AS SHOWN
 AFTER FINISH.

USE MATERIAL THICKNESS FOR MAX. RADIUS
 ON ALL BENDS UNLESS OTHERWISE SPECIFIED
 MOUNT INSERTS AFTER FINISHING

SYM	ZONE	DESCRIPTION	DATE	CH. NO.	DRAWN	CHECKED	ENG. APP.
		UNLESS OTHERWISE SPECIFIED: <td></td> <td></td> <td></td> <td></td> <td></td>					
DIMENSIONS ARE IN INCHES							
TOLERANCES ARE IN INCHES							
FRACTIONS 1/164							
DECIMALS 1.003							
ANGLES 1/16							
SCALE DO NOT SCALE							
MAXIMUM ALLOWABLE TOLERANCES HAVE BEEN DETERMINED AND ANY DEVIATIONS WILL BE CAUSE FOR REJECTION. REMOVE ALL BURRS & SHARP EDGES							

REQ	ITEM	PART NO.	DESCRIPTION	SYMBOL
6	1	NT-129-1032-4	NUT, ROUND/SWAGE TYPE	E
		.064	STOCK SIZE	
		ALUMINUM	MATERIAL	
		5052-H32	TYPE & TEMPER	
		S404 YEL. IRRIDITE	HEAT TREAT SPEC.	
			FINISH & SPEC. NO.	
			VAR.	
			DRAWN	
			CHECKED	
			MS-2955	FINAL APPROVAL
			MECH. DES. APP.	
			ELECT. DES. APP.	
			SHEET	
			OF	

REVISIONS NO. 1033