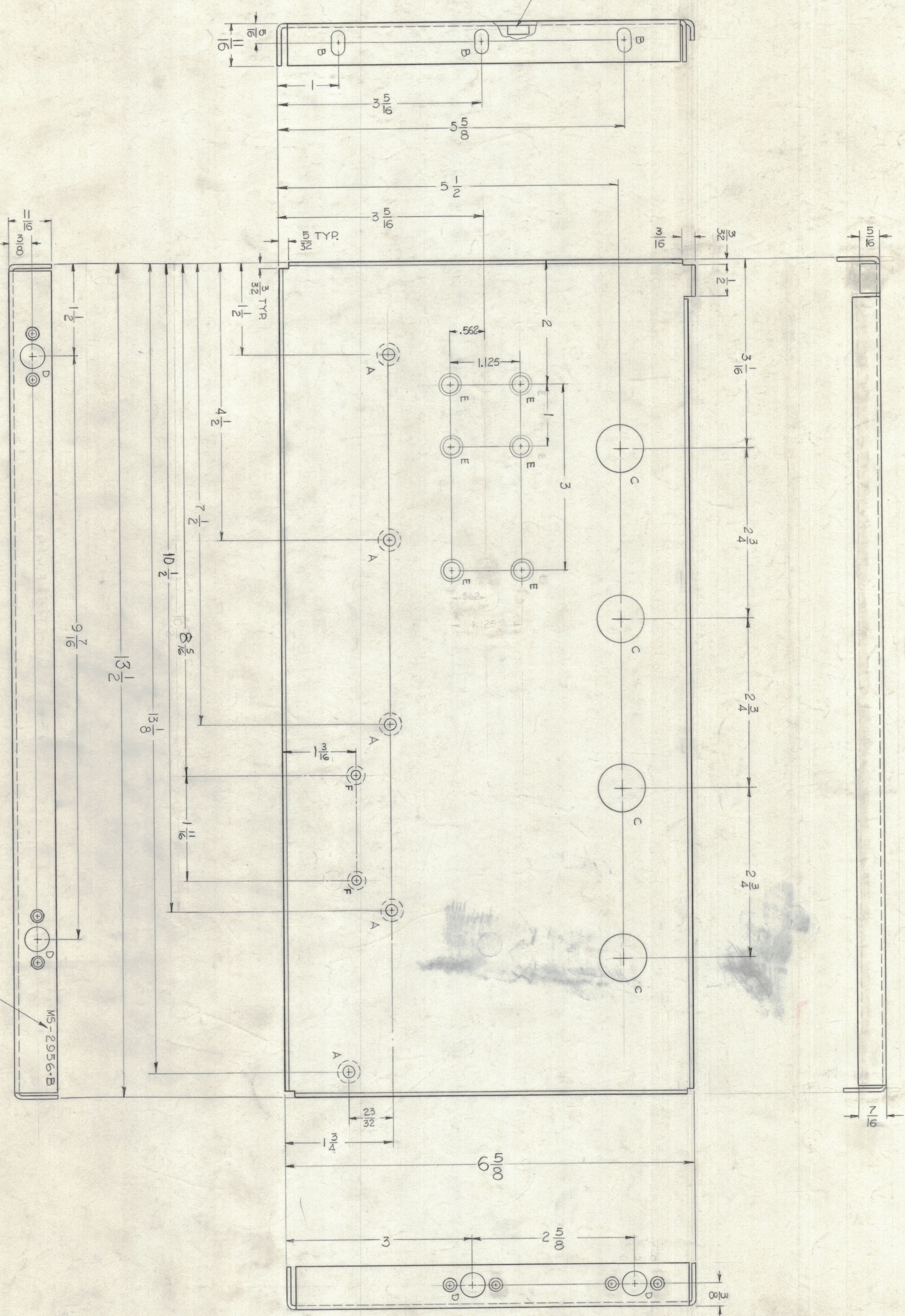


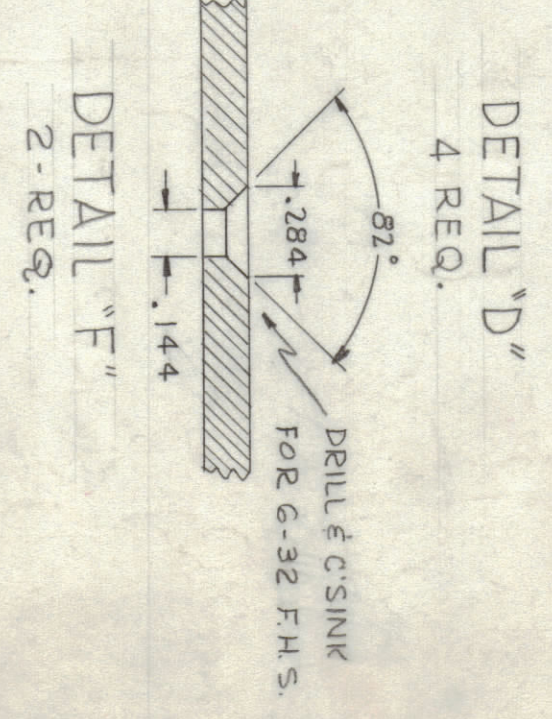
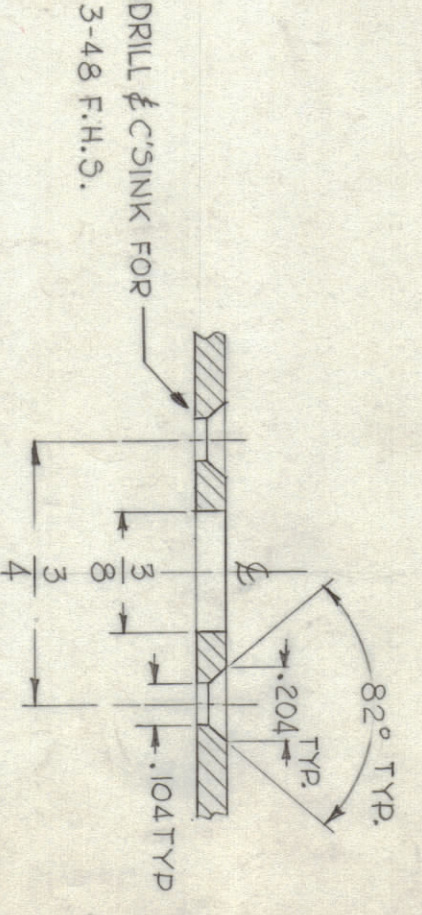
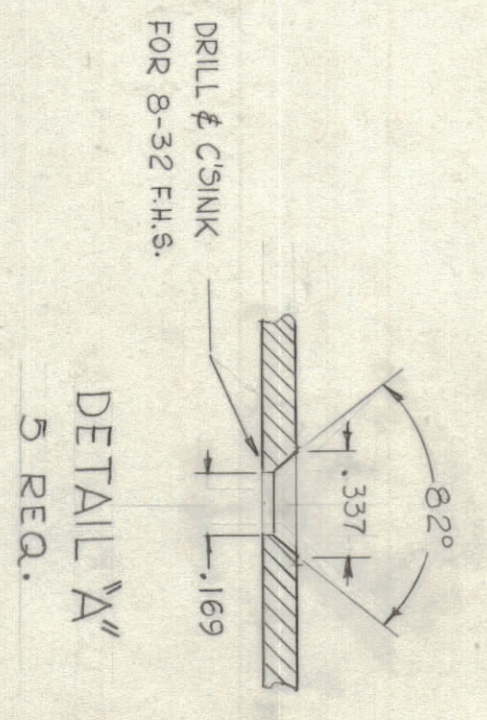
NOTICE TO PERSONS RECEIVING THIS DRAWING
 THE TECHNICAL MATERIEL CORPORATION claims
 proprietary right in the material disclosed herein.
 This drawing is issued in confidence and may be used
 for information only and may not be copied or used
 to manufacture without the express written per-
 mission from THE TECHNICAL MATERIEL CORPORA-
 TION to the user. This drawing is loaned for actual
 assistance and is subject to recall at any time.

Property of:
 THE TECHNICAL MATERIEL CORPORATION
 MANHATTAN, NEW YORK

MOUNT ITEM (1) IN ALL
 "E" HOLES AS SHOWN
 AFTER FINISH



HOLE	DESCRIPTION	REQ.
A	SEE DETAIL	5
B	13/64 x 13/32 SLOTS	3
C	3/4 DIA.	4
D	SEE DETAIL	4
E	.250" .253 DIA.	6
F	SEE DETAIL	2



USE MATERIAL THICKNESS FOR MAX. RADIUS
 ON ALL BENDS UNLESS OTHERWISE SPECIFIED

MOUNT INSERTS AFTER FINISHING

REV	DESCRIPTION	DATE	CHK. NO.	BY	CHK. BY
B	5052-H32	11-1-63	7994	WV	WV
A	5052-H32	11-1-62	7578	WV	WV

UNLESS OTHERWISE SPECIFIED:
 DIMENSIONS ARE IN INCHES
 TOLERANCES ON DECIMALS ± .005
 ANGLES ± 1/2°

MAXIMUM ALLOWABLE TOLERANCES HAVE
 BEEN DETERMINED AND ANY DEVIATIONS
 REMOVE ALL BURRS & SHARP EDGES

REQ. UNIT	MODEL	SECTION	USED ON	ASBY. NO.	DATE
1	DVM-4			4-30-62	

REQ. ITEM	PART NO.	DESCRIPTION	SYMBOL
1	NT-129-1032-4	NUT, ROUND, SWAGE TYPE	E
MATERIAL			
ALUMINUM			
STOCK SIZE			
.064 THK.			
MATERIAL			
5052-H32			
TYPE & TEMPER			
M42 T385 SPEC			
FINISH & SPEC. NO.			
S404 YEL. IRIDITE			
MATERIAL			
G.D.L.			
DRAWN			
CHECKED			
MECH. DES. APP.			
SHEET			
MS-2956			
OF			
B			

MS-2956