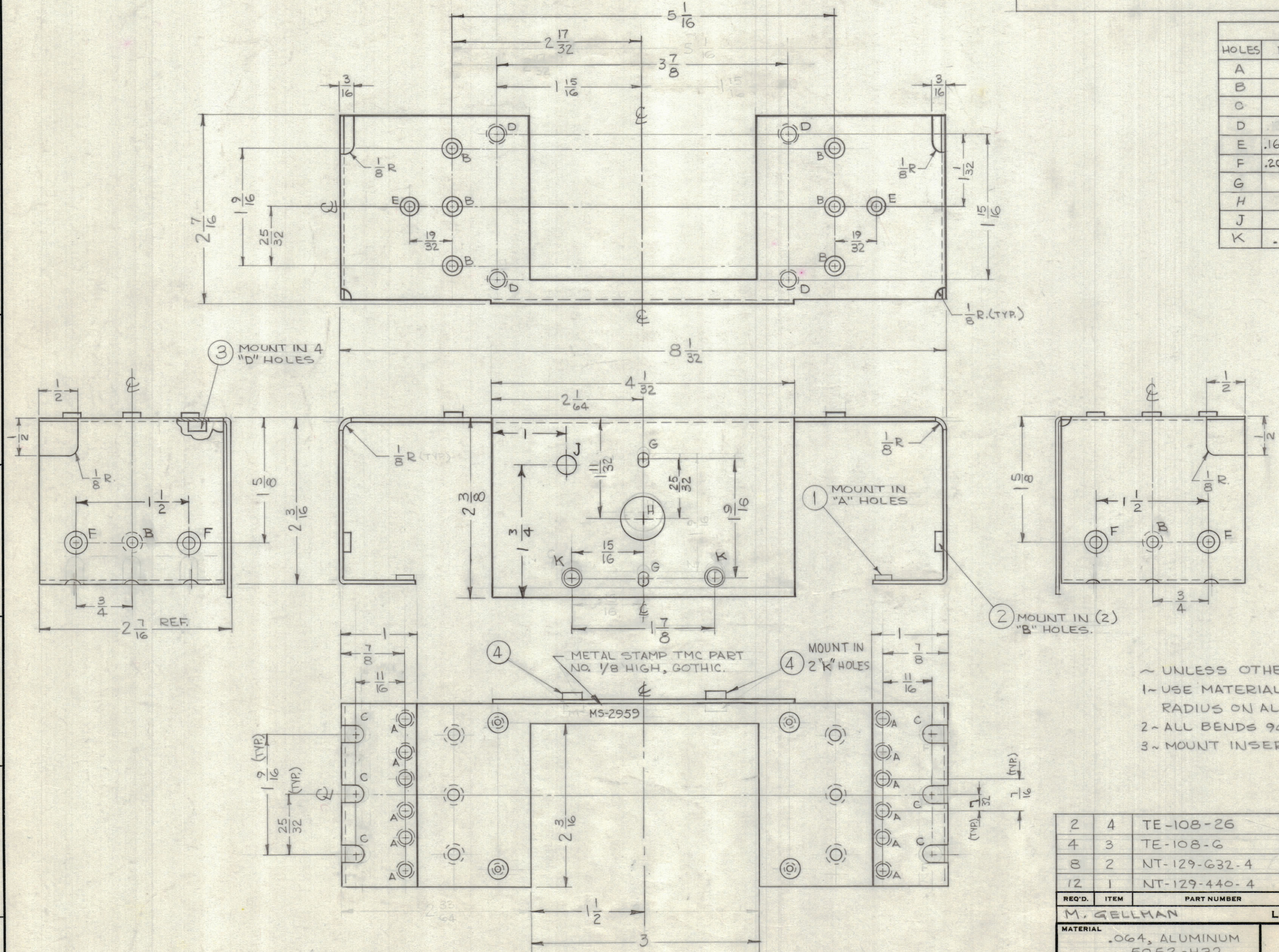


REVISIONS					
ZONE	SYM	DESCRIPTION	DATE	E.M.N. NO.	DRAFT
-	B	REVISED & REDRAWN	10/14/63	10204	MT
G2	C	HOLE LEGEND, "E" WAS .120 C'SNK 82° TO .230 DIA.	5:25:64	11448	MB
F2		HOLE LEGEND, "F" WAS .144 C'SNK 82° TO .284 DIA.			JCS

LEGEND		
HOLES	DESCRIPTION	REQ.
A	.161 - .164 DIA.	12
B	.191 - .194 DIA.	8
C	7/32 X 3/8 SLOT	6
D	.189 DIA. HOLE, C'SNK 82° TO .230 DIA.	4
E	.163 DIA. HOLE, C'SNK 82° TO .230 DIA.	2
F	.207 DIA. HOLE, C'SNK 82° TO .284 DIA.	4
G	1/8 X 3/16 SLOT	2
H	9/16 DIA.	1
J	1/4 DIA	1
K	.189 DIA	2



~ UNLESS OTHERWISE SPECIFIED ~
 1- USE MATERIAL THICKNES FOR MAX. RADIUS ON ALL BENDS.
 2- ALL BENDS 90°.
 3- MOUNT INSERTS AFTER FINISHING.

REQ'D.	ITEM	PART NUMBER	DESCRIPTION	SYMBOL
2	4	TE-108-26	STANDOFF, RIVET TYPE	K
4	3	TE-108-6	STANDOFF, RIVET TYPE	D
8	2	NT-129-G32-4	NUT, ROUND, SWAGE TYPE	B
12	1	NT-129-440-4	NUT, ROUND, SWAGE TYPE	A

M. GELLMAN		LIST OF MATERIAL	
MATERIAL		THE TECHNICAL MATERIEL CORP. MAMARONECK, NEW YORK	
.064, ALUMINUM 5052-H32		TITLE	
FINISH		6404 IRIDITE 14-2 AL-COAT	
GPR-92		CHASSIS, MIXER	
QTY./UNIT	MODEL USED ON	DATE	FINAL APPROVAL
SCALE	CODE	DATE	DATE
1:1		5-8-63	BP
THE CONTENTS OF THIS DRAWING ARE THE EXCLUSIVE PROPERTY OF THE TECHNICAL MATERIEL CORP. ITS UNAUTHORIZED USE OR REPRODUCTION IN WHOLE OR IN PART IS STRICTLY FORBIDDEN.		DATE	
UNLESS OTHERWISE SPECIFIED DIMENSIONS ARE IN INCHES AND INCLUDE CHEMICALLY APPLIED OR PLATED FINISHES		DATE	
DECIMALS	FRACTIONS	DATE	
.X ± .05	± 1/64	DATE	
.XX ± .01	ANGLES	DATE	
.XXX ± .005	± 0° 30'	DATE	
TOLERANCES		DATE	
		DATE	
		DATE	

NOTES

MS-2959
C