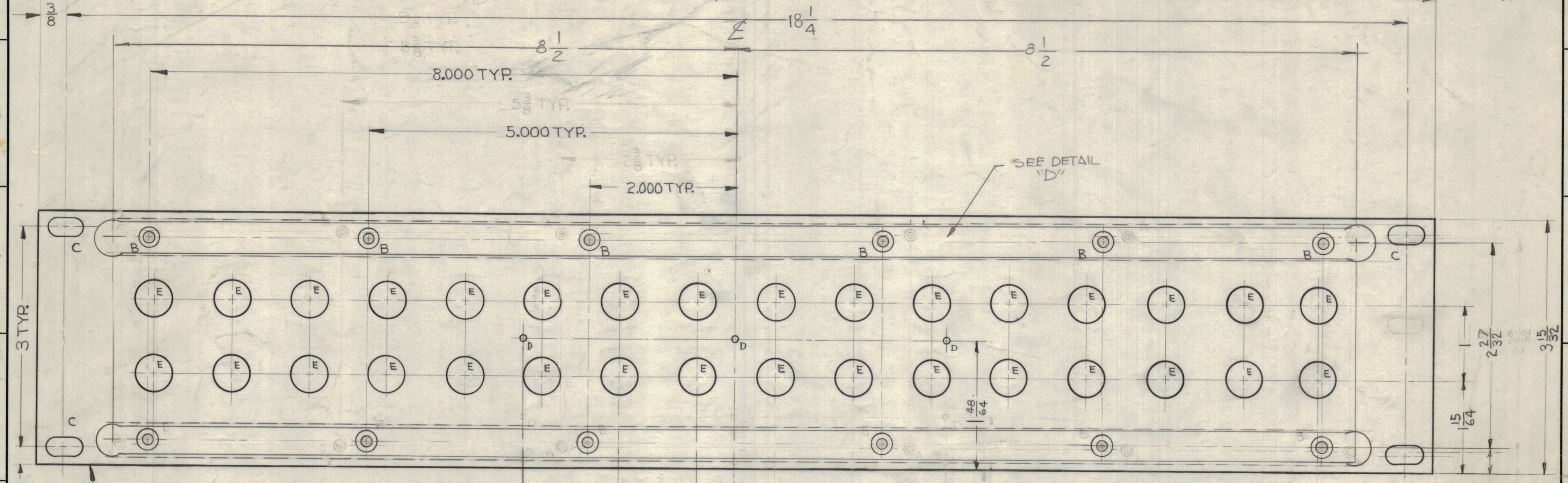
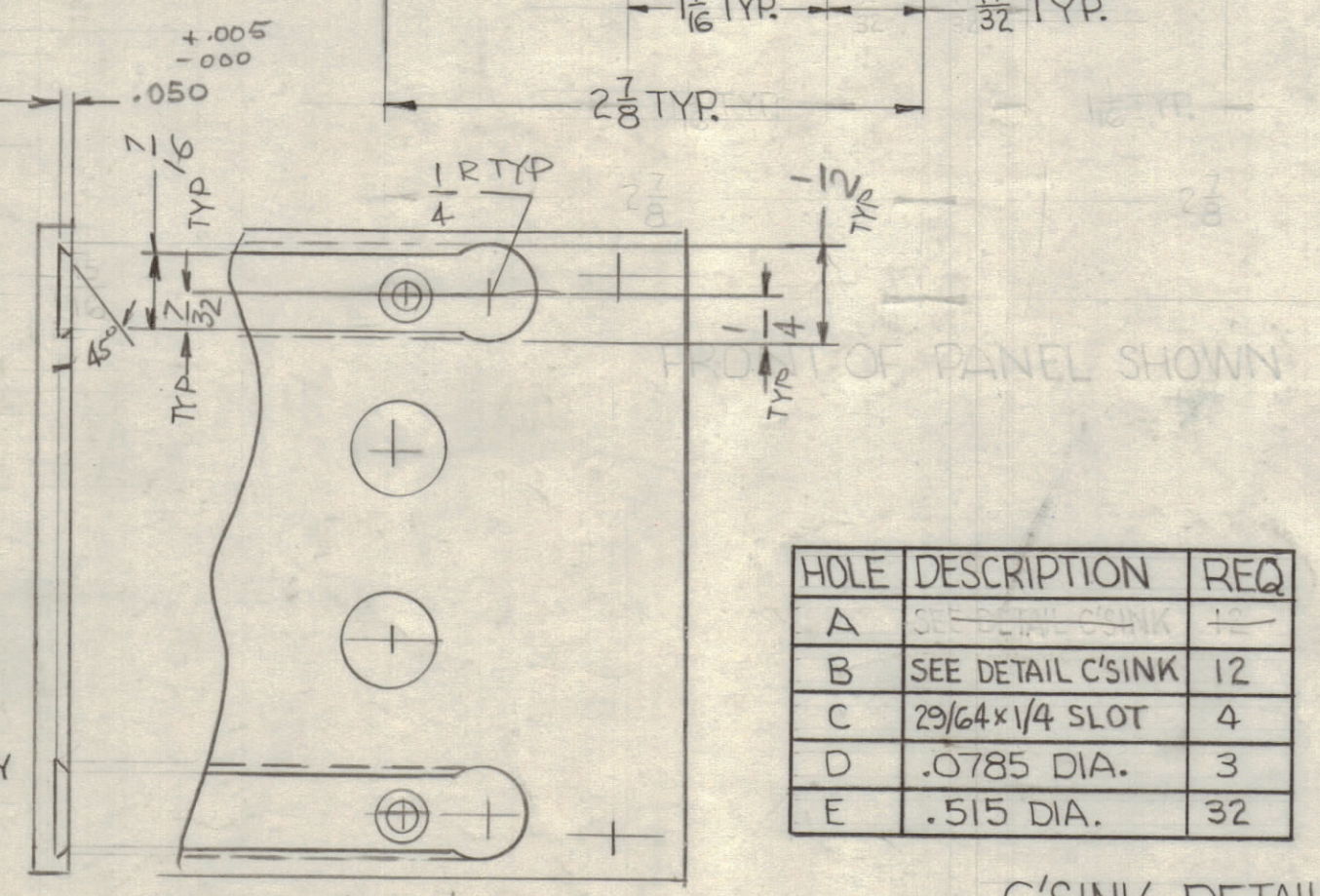


REVISIONS						
ZONE	SYM	DESCRIPTION	DATE	E.M.N. NO.	DRAFT	CHKD
E4	A	3 (D) HOLES RELOCATED	9-24-62	7381		
C3	B	MS2975-() CHART Added	8-28-81	21888	WLD	FB
	C	"B" HOLES RELOC-12" HOLES DEL. SLOT 17"x1/2"x.05 ADD	5-3-81	22063	GDL	
	D	ON "E" HOLES CHANGE C'BORE .750 DIA TO .040 DEEP TO .750 DIA TO .030 DEEP	1-24-85	2209	G.D.L	
	E	"E" HOLE WAS C'BORE .750 X .040 DEEP	3-21-85	2209	G.D.L	FB



METAL STAMP TMC PART NO.
 1/8" HIGH BLACK GOTHIC ON
 REAR OF PANEL. (MS-2975-A)



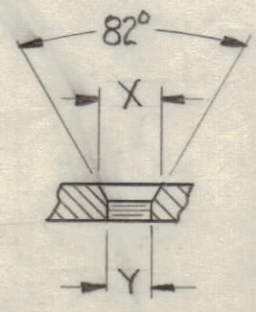
MS2975	AS IS	SPP
MS2975-2	"E" Holes to be .593 DIA. C'BORE .750 DIA TO .030 DEEP, FRONT & REAR OF PANEL	SPPN

HOLE	DESCRIPTION	REQ
A	SEE DETAIL C'SINK	12
B	29/64 x 1/4 SLOT	4
D	.0785 DIA.	3
E	.515 DIA.	32

FINISHING NOTES:
 S404 IRIDITE
 S114 ZINC CHROMATE PRIMER
 S115 TMC SMOOTH GREY ENAMEL
 OR PRIME & PAINT TO CUST. SPEC. FRONT & EDGES ONLY

MACHINING NOTES:
 1- LATERAL BOW OF PANEL MUST BE KEPT .031 TOL.
 2- MILL ALL EDGES.
 3- HOLES MUST BE DRILLED.
 4- HOLES MUST BE FREE OF ALL MACHINING MARKS, GOUGES & SCRATCHES. IF NECESSARY, SAND FRONT OF PANEL WITH NO. 120 GRIT SANDPAPER.

HOLE	TYPE	X	Y
A	G-32	.284	.144



1	SPP-40416	
Q'TY./UNIT	MODEL USED ON	ASS'Y. NO.
SCALE	CODE	
DO NOT SCALE		

THE CONTENTS OF THIS DRAWING ARE THE EXCLUSIVE PROPERTY OF THE TECHNICAL MATERIEL CORP. ITS UNAUTHORIZED USE OR REPRODUCTION IN WHOLE OR IN PART IS STRICTLY FORBIDDEN.

REQ'D.	ITEM	PART NUMBER	DESCRIPTION	SYMBOL
PRITCHARD LIST OF MATERIAL				
MATERIAL		THE TECHNICAL MATERIEL CORP.		
3/16 ALUMINUM 2024 T3		MAMARONECK, NEW YORK		
FINISH		TITLE		
SEE FINISHING NOTES		PANEL, FRONT MACHINING		
UNLESS OTHERWISE SPECIFIED DIMENSIONS ARE IN INCHES AND INCLUDE CHEMICALLY APPLIED OR PLATED FINISHES		DRAWN R. Luchini DATE 5-16-62		
DECIMALS .X ± .05 .XX ± .01 .XXX ± .005		CHECKED Hde DATE 5-25-62		
FRACTIONS ± 1/64 ± 0° 30'		ELECT. DES. DATE		
TOLERANCES		MECH. DES. DATE 5/29/62		
		FINAL APPROVAL MS-2975 E		
		SHEET 1		
		REV. LTR.		

NOTES

MS2975 E