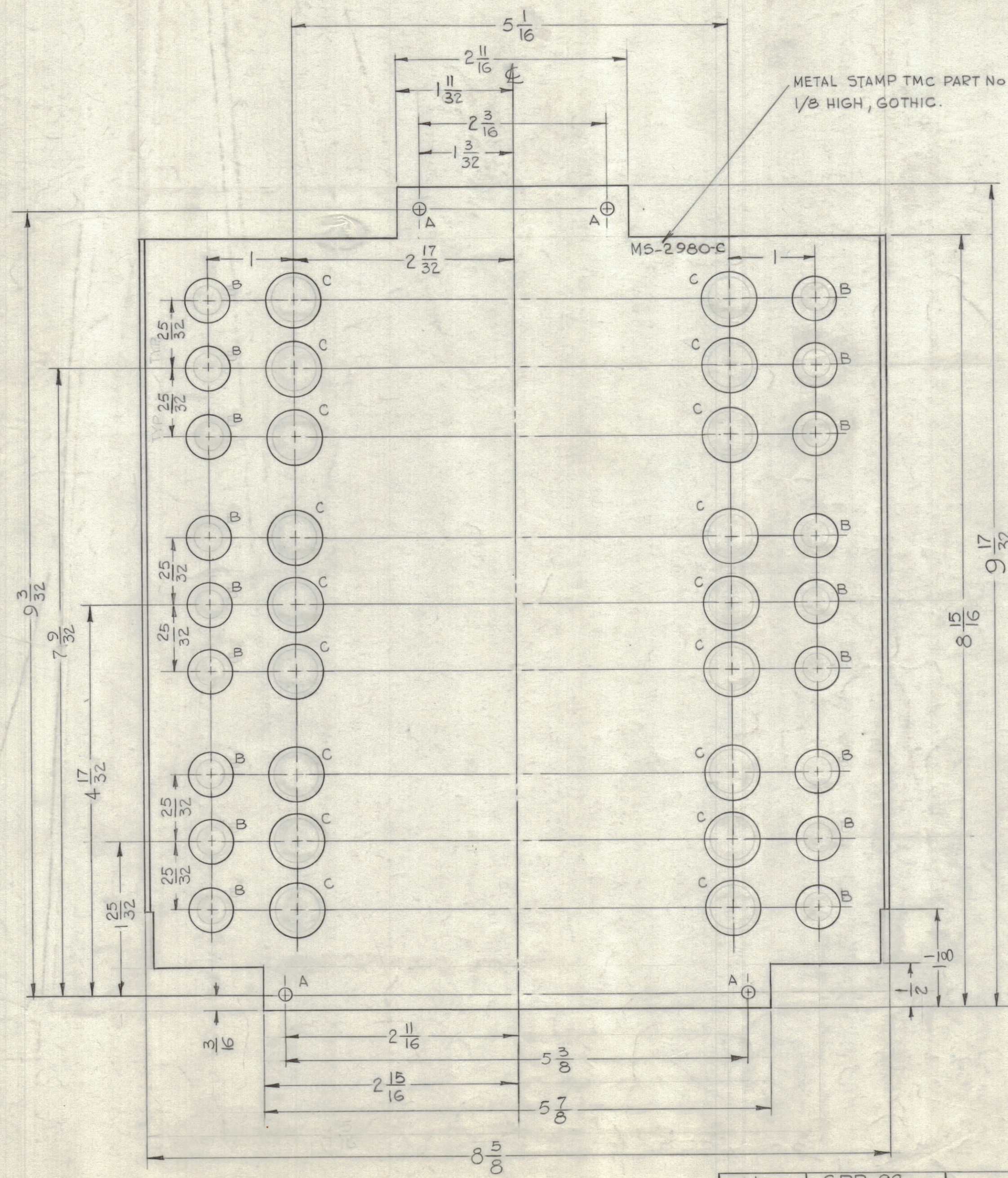
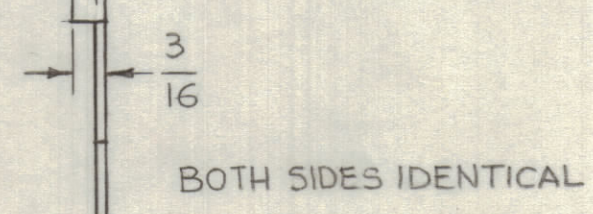


REVISIONS							
ZONE	SYM	DESCRIPTION	DATE	E.M.N. NO.	DRAFT	CHKD	APPD
	B	REVISED & REDRAWN	6-13-63	935B	G.D.L.		
C, D, E, F, 4, 6.	C	B-HOLE 1/2 WAS 5/16 DIA., C-HOLE 5/8 WAS 1/2 DIA.	3.17.64	11049	WB		



HOLE	DESCRIPTION	REQ'D
A	9/64 DIA.	4
B	1/2 DIA.	18
C	5/8 DIA.	18

- NOTES:
1. USE MATERIAL THICKNESS FOR MAX RADIUS ON ALL BENDS.
 2. ALL ANGULAR BENDS 90°.
 3. REMOVE ALL BURRS & SHARP EDGES.
 4. FINISH IRIDITE 14-2 AL-COAT (YEL) PER TMC SPEL S-404.



REF: LD-1150-E

REQ'D	ITEM	PART NUMBER	DESCRIPTION	SYMBOL
STRUMER LIST OF MATERIAL				
MATERIAL		THE TECHNICAL MATERIEL CORP. MAMARONECK, NEW YORK		
.051 THK. ALUMINUM 5052-H32				
FINISH		TITLE		
S-404 YEL IRIDITE		CASTING, BOTTOM COVER		
UNLESS OTHERWISE SPECIFIED DIMENSIONS ARE IN INCHES AND INCLUDE CHEMICALLY APPLIED OR PLATED FINISHES		DRAWN	DATE	FINAL APPROVAL
		G.D.L.	6-13-63	Y.F.H.
		CHECKED	DATE	DATE
			6-27-63	6-29-63
		ELECT. DES.	DATE	
			6-28-63	
		MECH. DES.	DATE	
		D. Kashani	6-28-63	
		SHEET		REV. LTR.
		MS-2980		C

QTY./UNIT	MODEL USED ON	ASSY. NO.
1	GPR-92	
SCALE	CODE	
1:1		

THE CONTENTS OF THIS DRAWING ARE THE EXCLUSIVE PROPERTY OF THE TECHNICAL MATERIEL CORP. ITS UNAUTHORIZED USE OR REPRODUCTION IN WHOLE OR IN PART IS STRICTLY FORBIDDEN.