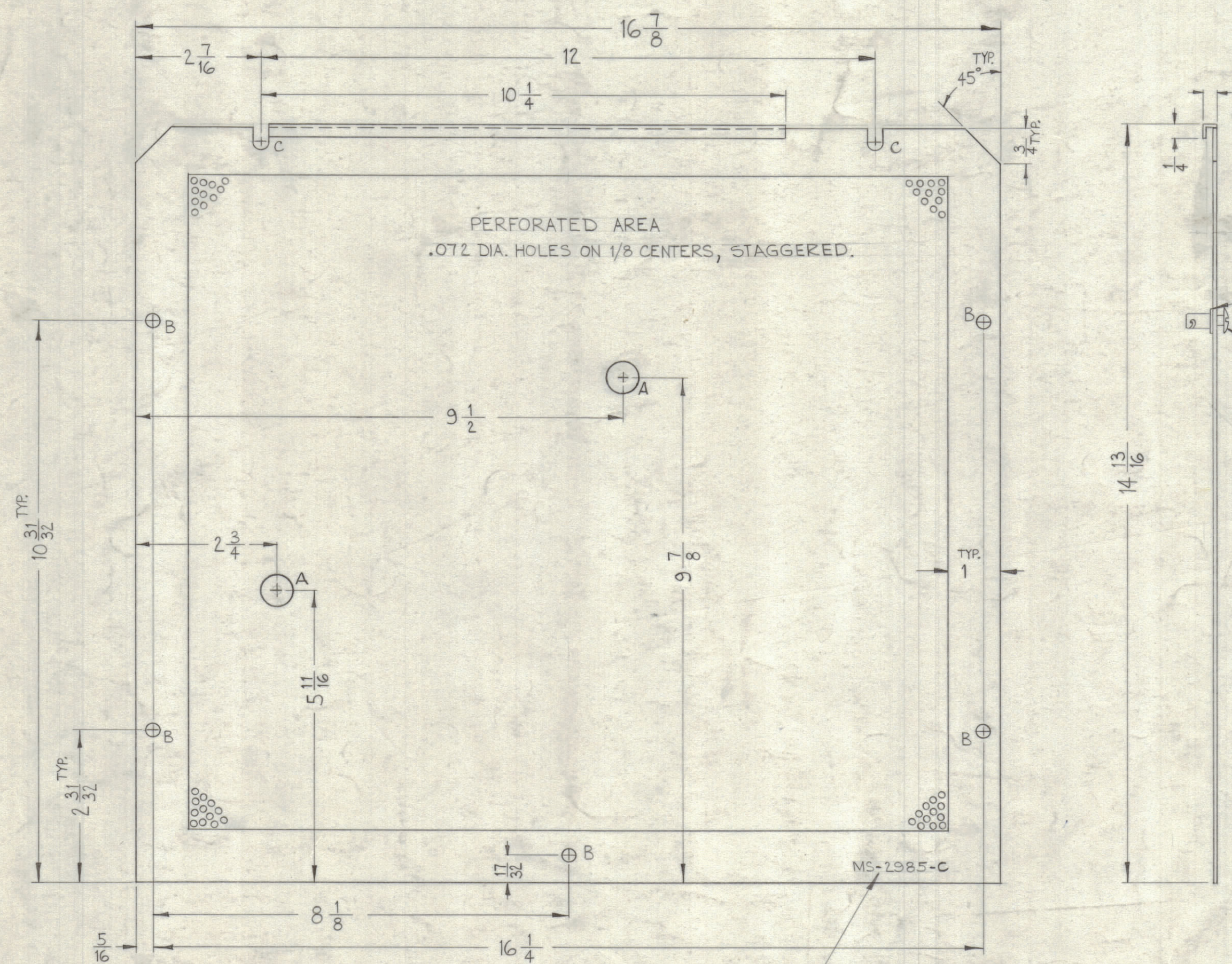


**NOTICE TO PERSONS RECEIVING THIS DRAWING**

THE TECHNICAL MATERIEL CORPORATION claims proprietary right in the material disclosed hereon. This drawing is issued in confidence for engineering information only and may not be reproduced or used to manufacture anything shown hereon without permission from THE TECHNICAL MATERIEL CORPORATION to the user. This drawing is loaned for mutual assistance and is subject to recall at any time.

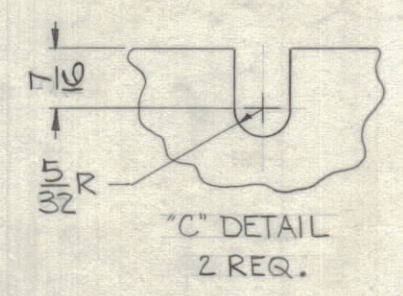
Property of:  
THE TECHNICAL MATERIEL CORPORATION  
MAMARONECK, NEW YORK

REVISIONS					
ZONE	SYM	DESCRIPTION	DATE	E.M.N. NO.	APPD.
E2	A	(2) "A" HOLES WERE 5/32 DIA.	10-26-62	7530	[Signature]
B2	B	BLANK SIZE REF. MS-1775-20, DELETED	4-25-63	8912	[Signature]
F5	C	ON PICTORIAL, ADDED "STAGGERED"			
CZ		IN "C" DET. 7/16 WAS 5/16 & 5/32 R WAS 9/16 R	4-23-63	10,014	[Signature]



MOUNT ITEMS 1 & 2 IN ALL "B" HOLES AS SHOWN AFTER FINISHING.

LEGEND		
HOLE	DESCRIPTION	REQ.
A	5/16 DIA.	2
B	1/4 DIA.	5



METAL STAMP TMC PART NO. 1/8 HIGH GOTHIC AS SHOWN.

REF: BLANK SIZE, TMC DWG. MS-1775-20

REQ'D.	ITEM	PART NUMBER	DESCRIPTION	SYMBOL
5	2	FS-110-1	STUD, SLOTTED HEAD	
5	1	FS-109-3	RING, STUD RETAINING	

LIST OF MATERIAL			
MATERIAL	.051 ALUMINUM 5052-H32		
FINISH	S404 YELLOW IRIDITE		
THE TECHNICAL MATERIEL CORP. MAMARONECK, NEW YORK		TITLE: COVER, BOTTOM	
DRAWN	DATE	FINAL APPROVAL	DATE
W.A.F.	5-21-62	[Signature]	
CHECKED	DATE		
[Signature]	5-22-62		
ELECT. DES.	DATE		
[Signature]		MS-2985	
MECH. DES.	DATE		
		SHEET	REV. LTR.

Q'TY./UNIT	MODEL USED ON	ASS'Y. NO.
1	AFC-382A	
SCALE	CODE	

THE CONTENTS OF THIS DRAWING ARE THE EXCLUSIVE PROPERTY OF THE TECHNICAL MATERIEL CORP. ITS UNAUTHORIZED USE OR REPRODUCTION IN WHOLE OR IN PART IS STRICTLY FORBIDDEN.

**NOTES**

MS-2985 C