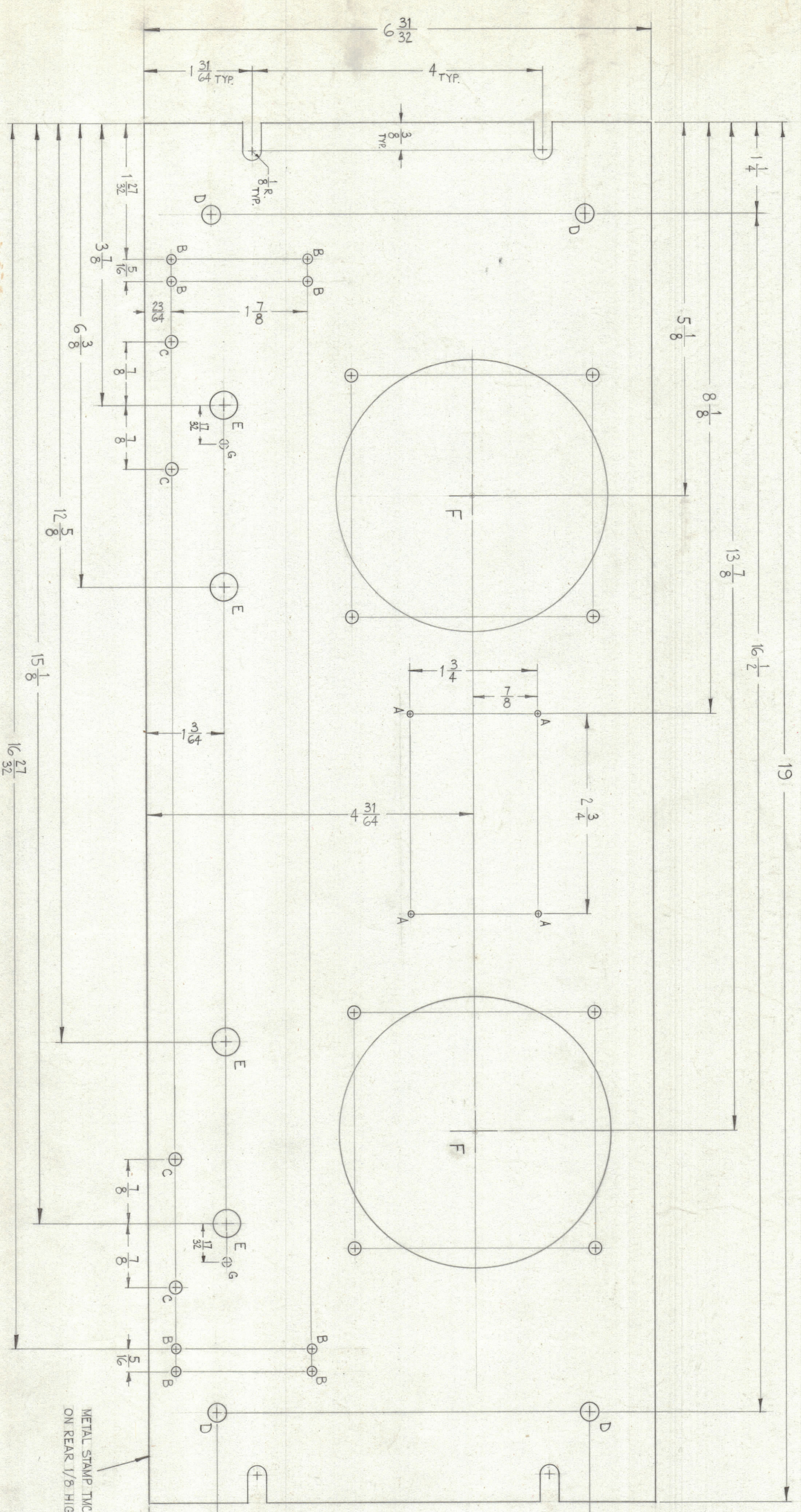


NOTICE TO PERSONS RECEIVING THIS DRAWING
 THE TECHNICAL MATERIEL CORPORATION claims proprietary right in the material disclosed herein. This drawing is issued in confidence for engineering information only and may not be reproduced or used in manufacturing anything shown herein without permission from THE TECHNICAL MATERIEL CORPORATION to the user. This drawing is loaned for individual assistance and is subject to recall at any time.
 Property of:
 THE TECHNICAL MATERIEL CORPORATION
 MAMARONECK, NEW YORK

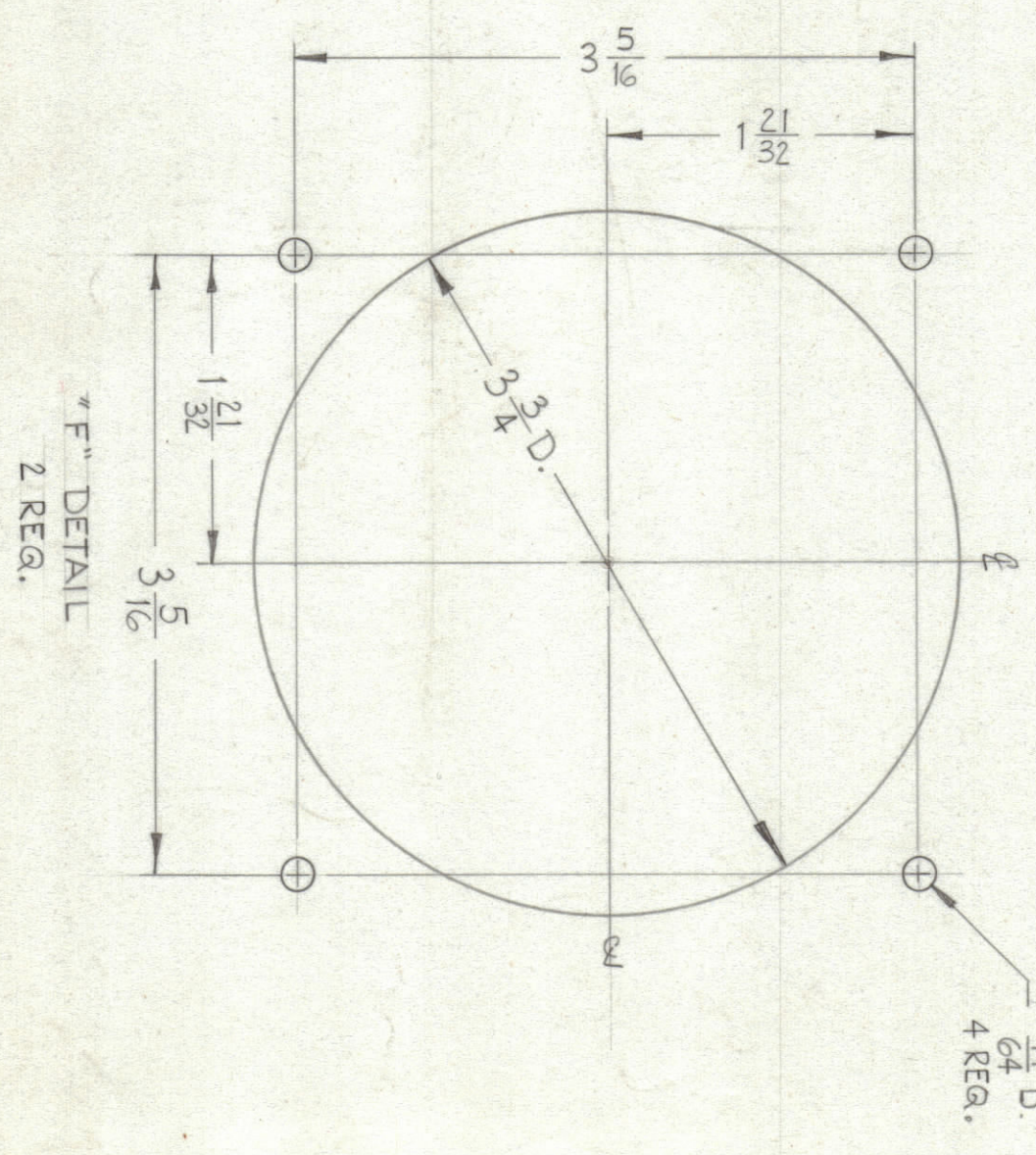


MACHINING -
 1- LATERAL BOW OF PANEL MUST BE KEPT TO .031 TOLERANCE.
 2- MILL ALL EDGES.
 3- HOLES MUST BE DRILLED UNLESS OTHERWISE SPECIFIED.
 4- PANEL MUST BE FREE OF ALL MACHINING MARKS, GOUGES & SCRATCHES.
 IF NECESSARY SAND FRONT OF PANEL WITH NO. 120 GRIT SANDPAPER.

FINISH -
 S404 YELLOW IRIDITE.
 S114 ZINC CHROMATE PRIMER. FRONT & EDGES ONLY.
 S115 TMC SMOOTH GREY ENAMEL. EDGES ONLY.

METAL STAMP TMC PART NO. MS-3010
 ON REAR 1/8 HIGH GOTHIC.

HOLE	DESCRIPTION	REQ.
A	.070 DIA.	4
B	1/8 DIA.	8
C	11/64 DIA.	4
D	1/4 DIA.	4
E	3/8 DIA.	4
G	1/8 DIA X 1/8 DEP. ON REAR	2



REF: LD-1141 (8) 2 SHEETS

NO.	ITEM	PART NUMBER	DESCRIPTION	SYMBOL
1	5 De Marco		THE TECHNICAL MATERIEL CORP. MAMARONECK, NEW YORK	

NO.	ITEM	PART NUMBER	DESCRIPTION	SYMBOL
1	3/16 THK ALUMINUM 2024-T3		MACHINING, FRONT PANEL	

SCALE	AS SHOWN
FILL (Do Not Seal)	
CITY/UNIT	NEW YORK, N.Y.
DESIGNER	
DATE	
CHECKED	
ELECT. DES.	
MACH. DES.	

UNLESS OTHERWISE SPECIFIED	
DIMENSIONS ARE IN INCHES AND INCLUDE DIMENSIONS OF ALL PARTS AND FINISHES	
TOLERANCES	± .005
	± .010
	± .015
	± .030
	± .060
	± .125
	± .250
	± .500
	± 1.000
	± 2.000
	± 3.000
	± 4.000
	± 5.000
	± 6.000
	± 7.000
	± 8.000
	± 9.000
	± 10.000
	± 12.000
	± 15.000
	± 20.000
	± 25.000
	± 30.000
	± 36.000
	± 42.000
	± 48.000
	± 54.000
	± 60.000
	± 66.000
	± 72.000
	± 78.000
	± 84.000
	± 90.000
	± 96.000
	± 102.000
	± 108.000
	± 114.000
	± 120.000
	± 126.000
	± 132.000
	± 138.000
	± 144.000
	± 150.000
	± 156.000
	± 162.000
	± 168.000
	± 174.000
	± 180.000
	± 186.000
	± 192.000
	± 198.000
	± 204.000
	± 210.000
	± 216.000
	± 222.000
	± 228.000
	± 234.000
	± 240.000
	± 246.000
	± 252.000
	± 258.000
	± 264.000
	± 270.000
	± 276.000
	± 282.000
	± 288.000
	± 294.000
	± 300.000
	± 306.000
	± 312.000
	± 318.000
	± 324.000
	± 330.000
	± 336.000
	± 342.000
	± 348.000
	± 354.000
	± 360.000
	± 366.000
	± 372.000
	± 378.000
	± 384.000
	± 390.000
	± 396.000
	± 402.000
	± 408.000
	± 414.000
	± 420.000
	± 426.000
	± 432.000
	± 438.000
	± 444.000
	± 450.000
	± 456.000
	± 462.000
	± 468.000
	± 474.000
	± 480.000
	± 486.000
	± 492.000
	± 498.000
	± 504.000
	± 510.000
	± 516.000
	± 522.000
	± 528.000
	± 534.000
	± 540.000
	± 546.000
	± 552.000
	± 558.000
	± 564.000
	± 570.000
	± 576.000
	± 582.000
	± 588.000
	± 594.000
	± 600.000
	± 606.000
	± 612.000
	± 618.000
	± 624.000
	± 630.000
	± 636.000
	± 642.000
	± 648.000
	± 654.000
	± 660.000
	± 666.000
	± 672.000
	± 678.000
	± 684.000
	± 690.000
	± 696.000
	± 702.000
	± 708.000
	± 714.000
	± 720.000
	± 726.000
	± 732.000
	± 738.000
	± 744.000
	± 750.000
	± 756.000
	± 762.000
	± 768.000
	± 774.000
	± 780.000
	± 786.000
	± 792.000
	± 798.000
	± 804.000
	± 810.000
	± 816.000
	± 822.000
	± 828.000
	± 834.000
	± 840.000
	± 846.000
	± 852.000
	± 858.000
	± 864.000
	± 870.000
	± 876.000
	± 882.000
	± 888.000
	± 894.000
	± 900.000
	± 906.000
	± 912.000
	± 918.000
	± 924.000
	± 930.000
	± 936.000
	± 942.000
	± 948.000
	± 954.000
	± 960.000
	± 966.000
	± 972.000
	± 978.000
	± 984.000
	± 990.000
	± 996.000
	± 1000.000

NOTES

THE CONTENTS OF THIS DRAWING ARE THE EXCLUSIVE PROPERTY OF THE TECHNICAL MATERIEL CORPORATION. ANY REPRODUCTION IN WHOLE OR IN PART IS STRICTLY FORBIDDEN.

MS-3010