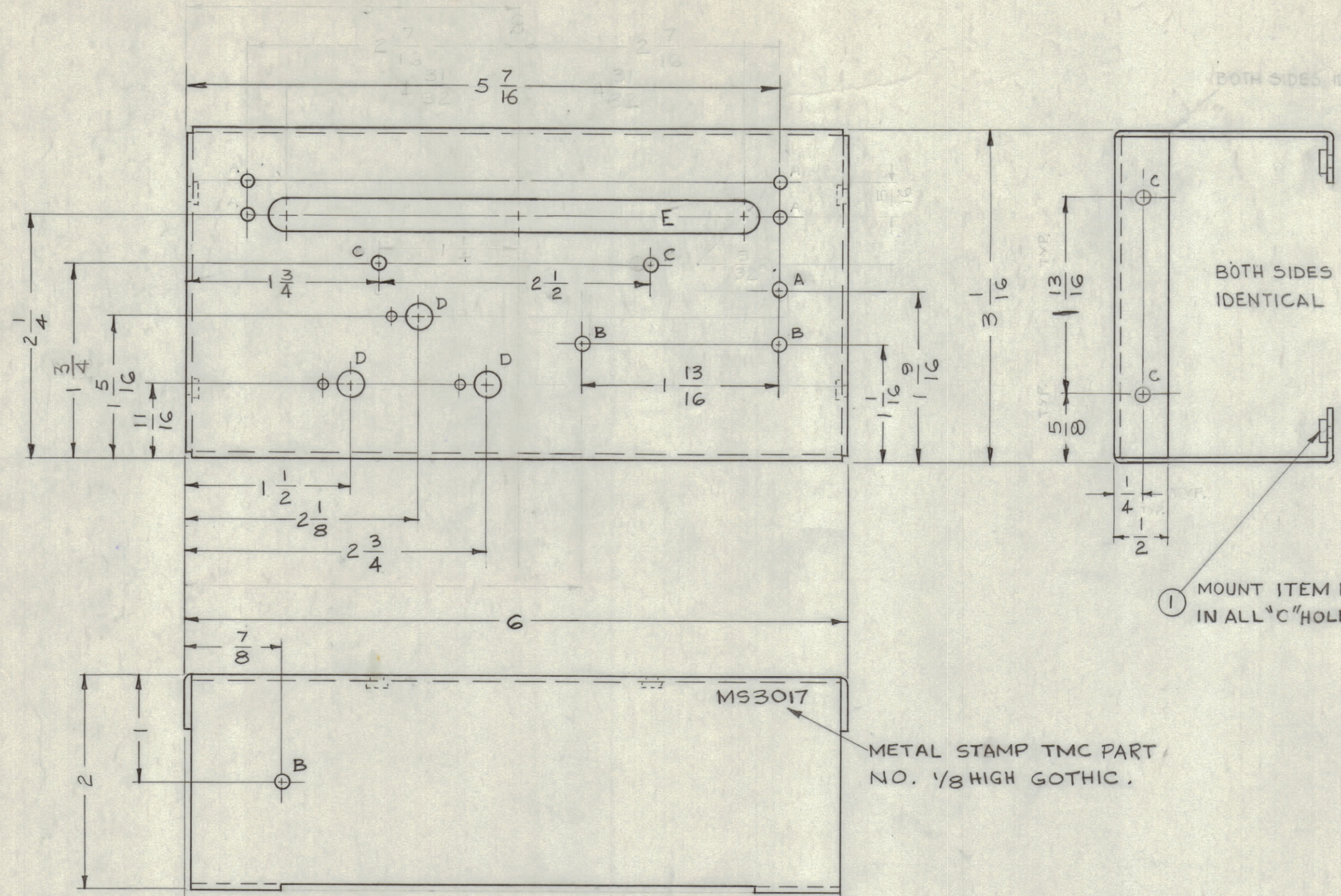
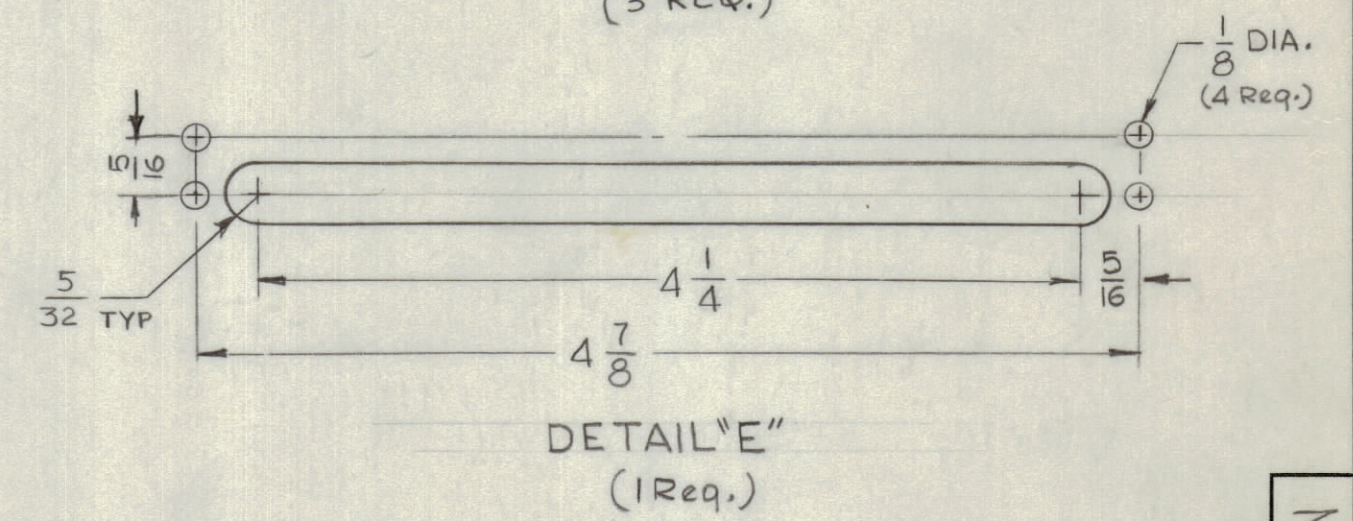
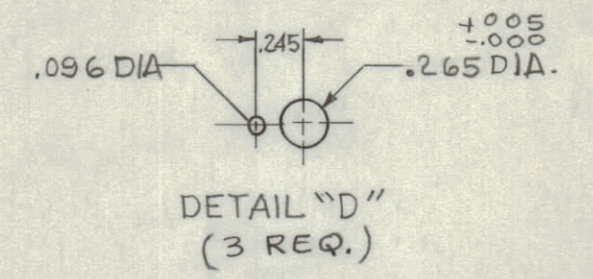


REVISIONS							
ZONE	SYM	DESCRIPTION	DATE	E.M.N. NO.	DRAFT	CHKD	APPD
F2	A	ON DETAIL "D" DIA .096 WAS .265 & DIA .265 WAS .096	826-64	12202	W.S.	J.M.A.	

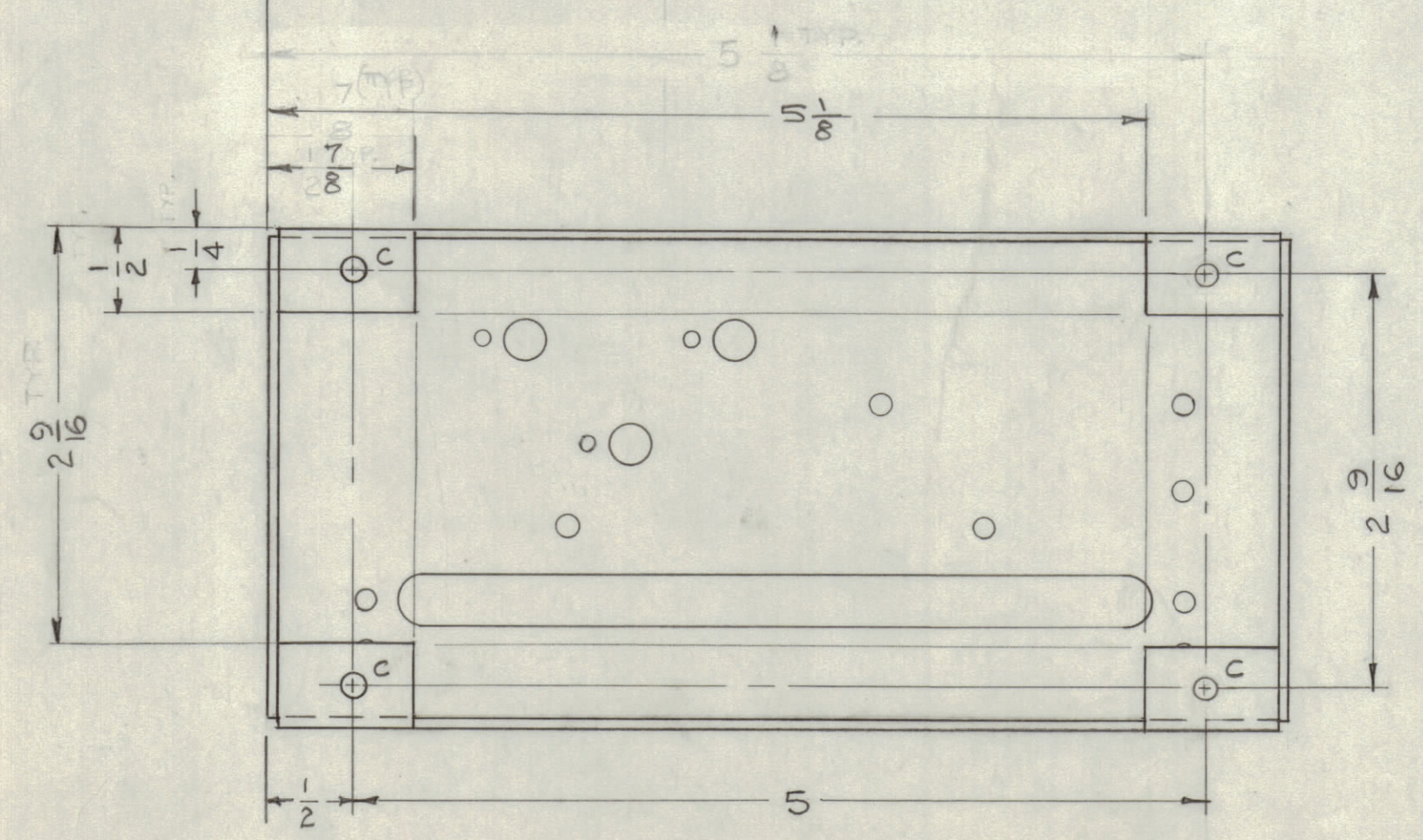


LEGEND		
HOLE	DESCRIPTION	REQ.
A	1/8 DIA.	1
B	5/32 DIA.	3
C	.167-.165 DIA.	10
D	SEE DETAIL	3
E	SEE DETAIL	1



MS3017  
METAL STAMP TMC PART NO. 1/8 HIGH GOTHIC.

NOTES:  
USE MATERIAL THICKNESS FOR MAX. RADIUS ON ALL BENDS UNLESS OTHERWISE SPECIFIED  
MOUNT INSERTS AFTER FINISHING



REF - LD-1197				
10	1	NT-129-440-4	NUT ROUND SWAGE TYPE	C
REQ'D.	ITEM	PART NUMBER	DESCRIPTION	SYMBOL
J. STRUMER LIST OF MATERIAL				
MATERIAL		THE TECHNICAL MATERIEL CORP.		
.064 THICK 5052-H32 ALUMINUM		MAMARONECK, NEW YORK		
FINISH		TITLE		
S404-YEL, IRIDITE		CHASSIS MAIN		
UNLESS OTHERWISE SPECIFIED DIMENSIONS ARE IN INCHES AND INCLUDE CHEMICALLY APPLIED OR PLATED FINISHES		DRAWN	DATE	FINAL APPROVAL
		W.S.	9/25/63	BP
		CHECKED	DATE	
		J.M.A.	4/1/63	
		ELECT. DES.	DATE	
		J.M.A.	4-1-63	
		MECH. DES.	DATE	
		J.M.A.	4-1-63	
		MS-3017		A
		SHEET		REV. LTR.

1	KIT-155	A-3139
Q'TY./UNIT	MODEL USED ON	ASS'Y. NO.
SCALE	CODE	
THE CONTENTS OF THIS DRAWING ARE THE EXCLUSIVE PROPERTY OF THE TECHNICAL MATERIEL CORP. ITS UNAUTHORIZED USE OR REPRODUCTION IN WHOLE OR IN PART IS STRICTLY FORBIDDEN.		
DECIMALS	FRACTIONS	TOLERANCES
.X ± .05	± 1/64	± .005
.XX ± .01	ANGLES	± 0° 30'
.XXX ± .005		

NOTES

MS-3017/A