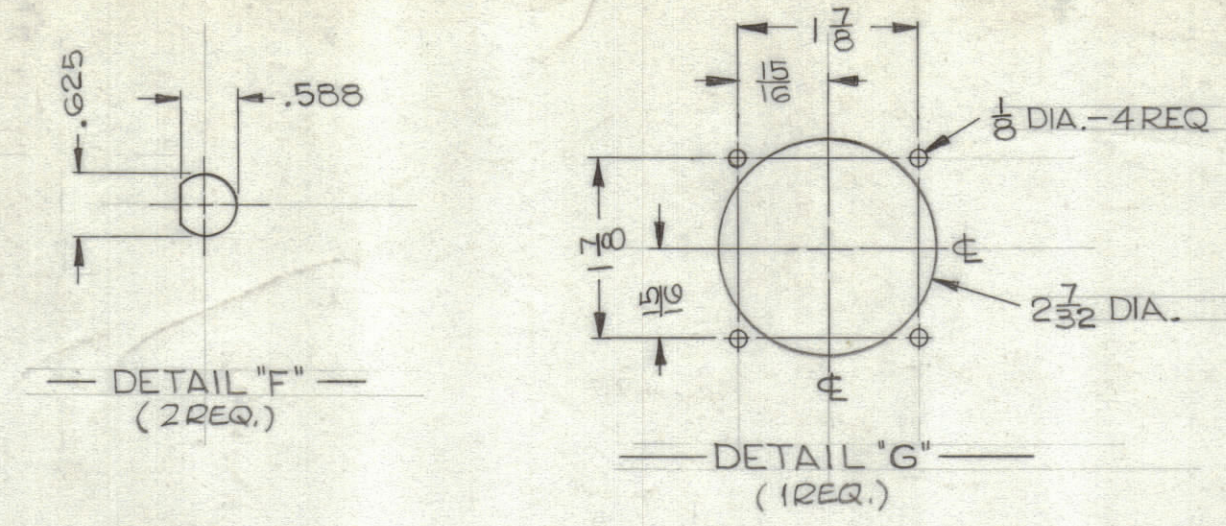
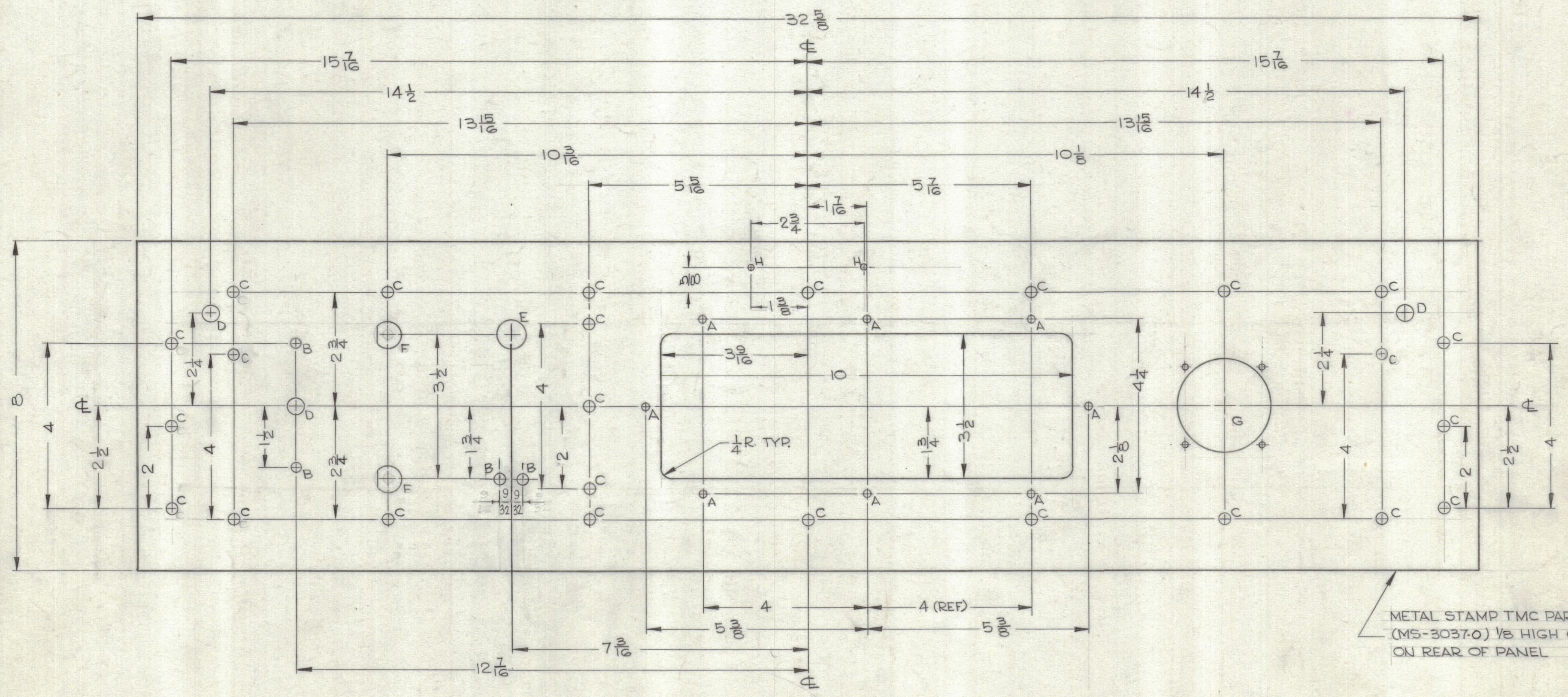


LEGEND		
HOLE	DESCRIPTION	REQ
A	11/64 DIA	8
B	13/64 DIA	4
C	15/64 DIA	25
D	3/8 DIA	3
E	1/16 DIA	1
F	SEE DETAIL	2
G	SEE DETAIL	1
H	.078 DIA	2



REVISIONS						
ZONE	SYM	DESCRIPTION	DATE	E.M.N. NO.	DRAFT	CHKD
		ORIGINAL RELEASE FOR PRODUCTION	3-3-64		A.M.	
DS	A	DELE ONE "D" HOLE, ADD (2) 1/8" HOLES	6-11-64	12149		



METAL STAMP TMC PART No. (MS-3037-0) 1/8 HIGH GOTHIC ON REAR OF PANEL

MS-3037
A

FINISH NOTES:

- S404 - IRIDITE 14-2 AL-COAT.
- S114 - ZINC CHROMATE PRIMER) FRONT AND
- S115 - SMOOTH GRAY ENAMEL) EDGES ONLY

MACHINING:

- MILL ALL EDGES.
- HOLES MUST BE DRILLED, UNLESS OTHERWISE SPECIFIED.
- LATERAL BOW OF PANEL MUST BE KEPT TO .031 TOLERANCE.
- PANEL MUST BE FREE OF ALL MACHINING MARKS, GOUGES AND SCRATCHES. IF NECESSARY, SAND FRONT OF PANEL WITH NO. 120 GRIT SANDPAPER.

REF: LD-1157, PX-

REQ'D.	ITEM	PART NUMBER	DESCRIPTION	SYMBOL
F. BUDETTI LIST OF MATERIAL				
MATERIAL		ALUMINUM, 2024-T-3 3/16 THICK		
FINISH		SEE NOTES		
THE TECHNICAL MATERIEL CORP.		MAMARONECK, NEW YORK		
TITLE		PANEL, FRONT		
DRAWN	DATE	FINAL APPROVAL	DATE	
9075	2-17-63	RDC		
CHECKED	DATE			
9075	2/10/64			
ELECS. DES.	DATE	MS-3037		
MECH. DES.	DATE	A		
	2/10/64	SHEET		
DECIMALS		FRACTIONS		REV. LTR.
.X ± .05		± 1/64		
.XX ± .01		ANGLES		
.XXX ± .005		± 0° 30'		

Q'TY./UNIT	MODEL USED ON	ASS'Y. NO.
1	GPT-200K	AX-398
SCALE	CODE	
1:2	A	

THE CONTENTS OF THIS DRAWING ARE THE EXCLUSIVE PROPERTY OF THE TECHNICAL MATERIEL CORP. ITS UNAUTHORIZED USE OR REPRODUCTION IN WHOLE OR IN PART IS STRICTLY FORBIDDEN.

NOTES