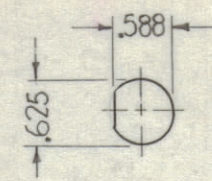
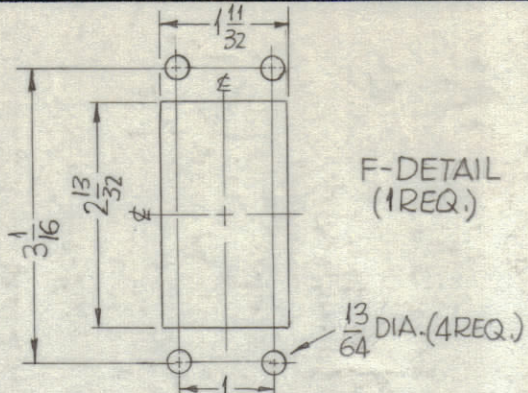


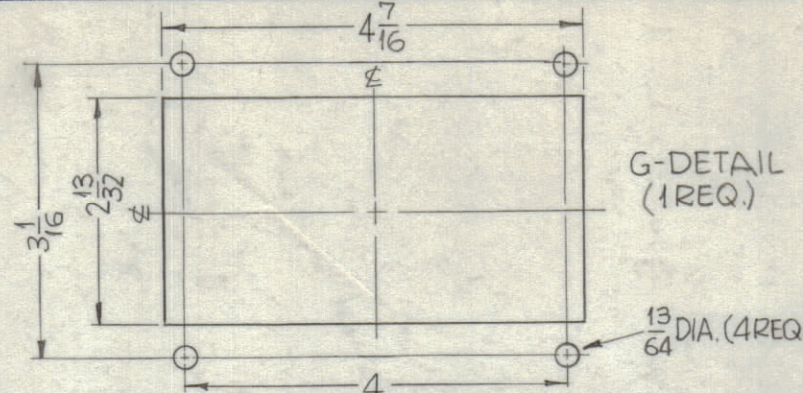
HOLES:  
 A~ NO. 50 DRILL — 2 REQ.  
 B~ .191-.194 DIA — 2 REQ.  
 C~ 13/64 DIA. — 9 REQ.  
 D~ 11/16 DIA. — 2 REQ.  
 H~ 11/64 DIA. — 2 REQ.



E-DETAIL  
(6 REQ.)

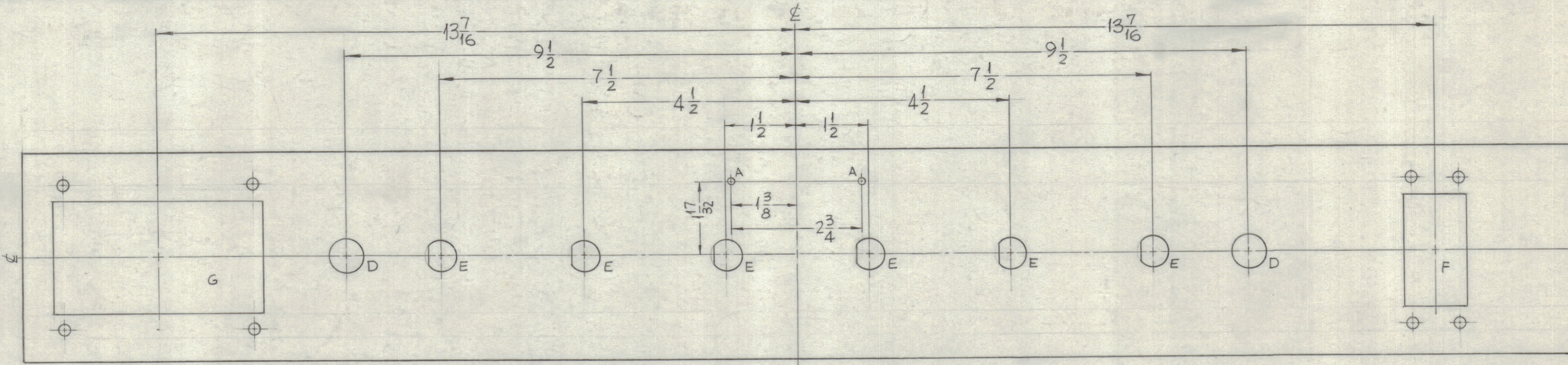


F-DETAIL  
(1 REQ.)

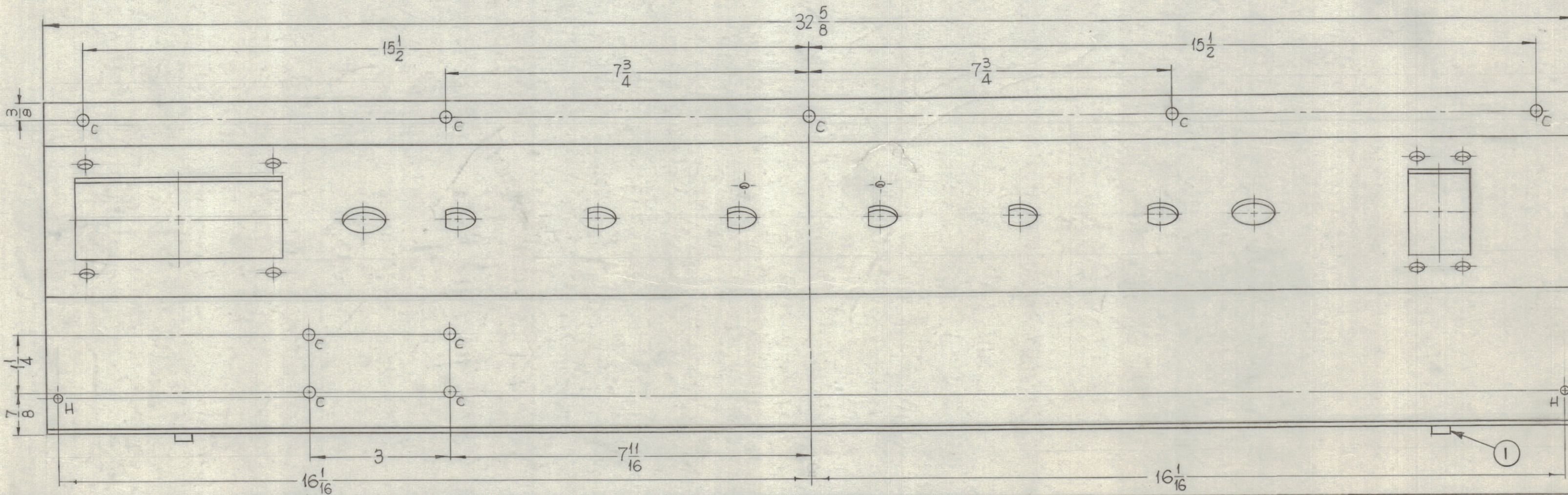


G-DETAIL  
(1 REQ.)

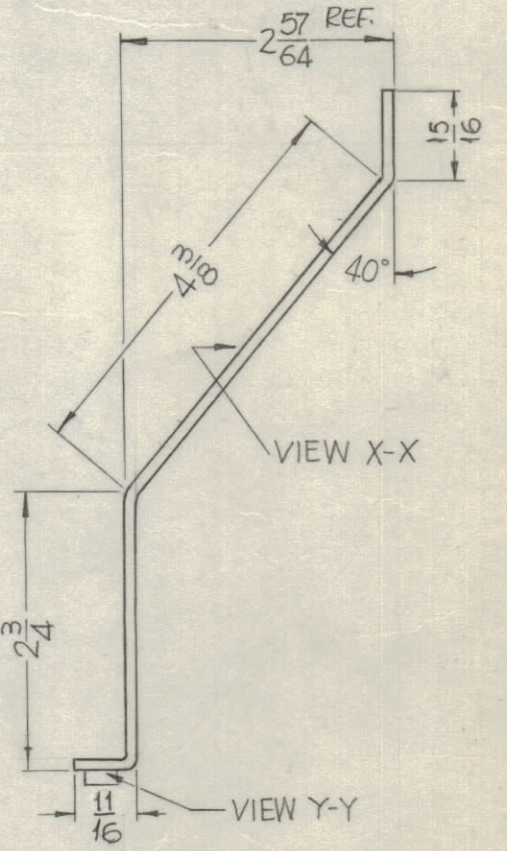
REVISIONS							
ZONE	SYM	DESCRIPTION	DATE	E.M.N. NO.	DRAFT	CHKD	APPD
	0	ORIGINAL RELEASE FOR PRODUCTION	3-26-64		A.M.		
	A	"B" HOLE WAS 3/16 DIA., IT. I ADDED	7.14.64	11771	LSB	903	202



VIEW X-X



VIEW Y-Y



VIEW X-X

VIEW Y-Y

MS-3065  
A

METAL STAMP TMC PART NO.  
 1/8 HIGH GOTHIC, WITH LATEST  
 REVISION LETTER.

**MACHINING:**

- MILL ALL EDGES.
- HOLES MUST BE DRILLED, UNLESS OTHERWISE SPECIFIED.
- LATERAL BOW OF PANEL MUST BE KEPT TO .031 TOLERANCE.
- PANEL MUST BE FREE OF ALL MACHINING MARKS, GOUGES AND SCRATCHES. IF NECESSARY, SAND FRONT OF PANEL WITH NO. 120 GRIT SANDPAPER.

**UNLESS OTHERWISE SPECIFIED:**

- USE MATERIAL THICKNESS FOR MAXIMUM RADIUS ON ALL BENDS.
- ALL ANGULAR BENDS 90°.
- REMOVE ALL BURRS AND SHARP EDGES.

**FINISH NOTES:**

- S404 - IRIDITE 14-2 AL-COAT.
- S114 - ZINC CHROMATE PRIMER, FRONT AND
- S115 - SMOOTH GRAY ENAMEL ) EDGES ONLY

NOTES

REF: LD-1173

1	GPT-200K	AX-399
Q'TY./UNIT	MODEL USED ON	ASS'Y. NO.
SCALE 1/2	CODE A	

THE CONTENTS OF THIS DRAWING ARE THE EXCLUSIVE PROPERTY OF THE TECHNICAL MATERIEL CORP. ITS UNAUTHORIZED USE OR REPRODUCTION IN WHOLE OR IN PART IS STRICTLY FORBIDDEN.

2	1	NT129-632-6	NUT, ROUND, SWAGE TYPE
REQ'D.	ITEM	PART NUMBER	DESCRIPTION
F. BUDETTI LIST OF MATERIAL			
MATERIAL		THE TECHNICAL MATERIEL CORP.	
1/8 THICK ALUMINUM		MAMARONECK, NEW YORK	
5052-H32		TITLE	
FINISH		PANEL FRONT, CONTROL PS.	
SEE NOTE		DRAWN SRG	
		DATE 7-19-63	
		CHECKED 903	
		DATE 2/19/64	
		ELECT. DES. 203 JB	
		DATE 7/14/64	
		MECH. DES. LSB	
		DATE 2/14/64	
		SHEET	
		REV. LTR.	