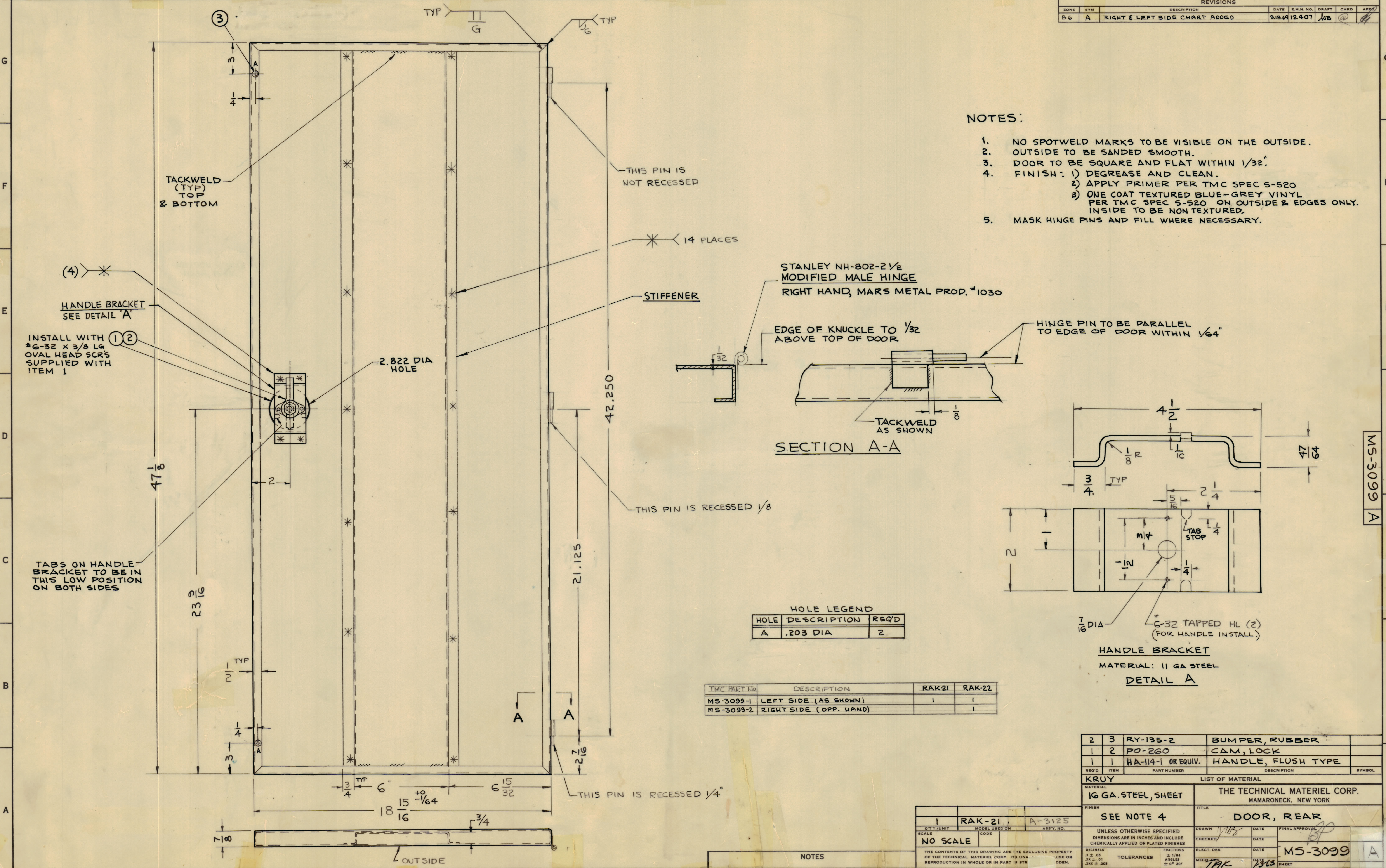


ZONE		SYM		DESCRIPTION	DATE	E.M.N. NO.	DRAFT	CHKD	APPROV
B6	A			RIGHT & LEFT SIDE CHART ADDED	9.18.69	12.407	JTB		

NOTES:

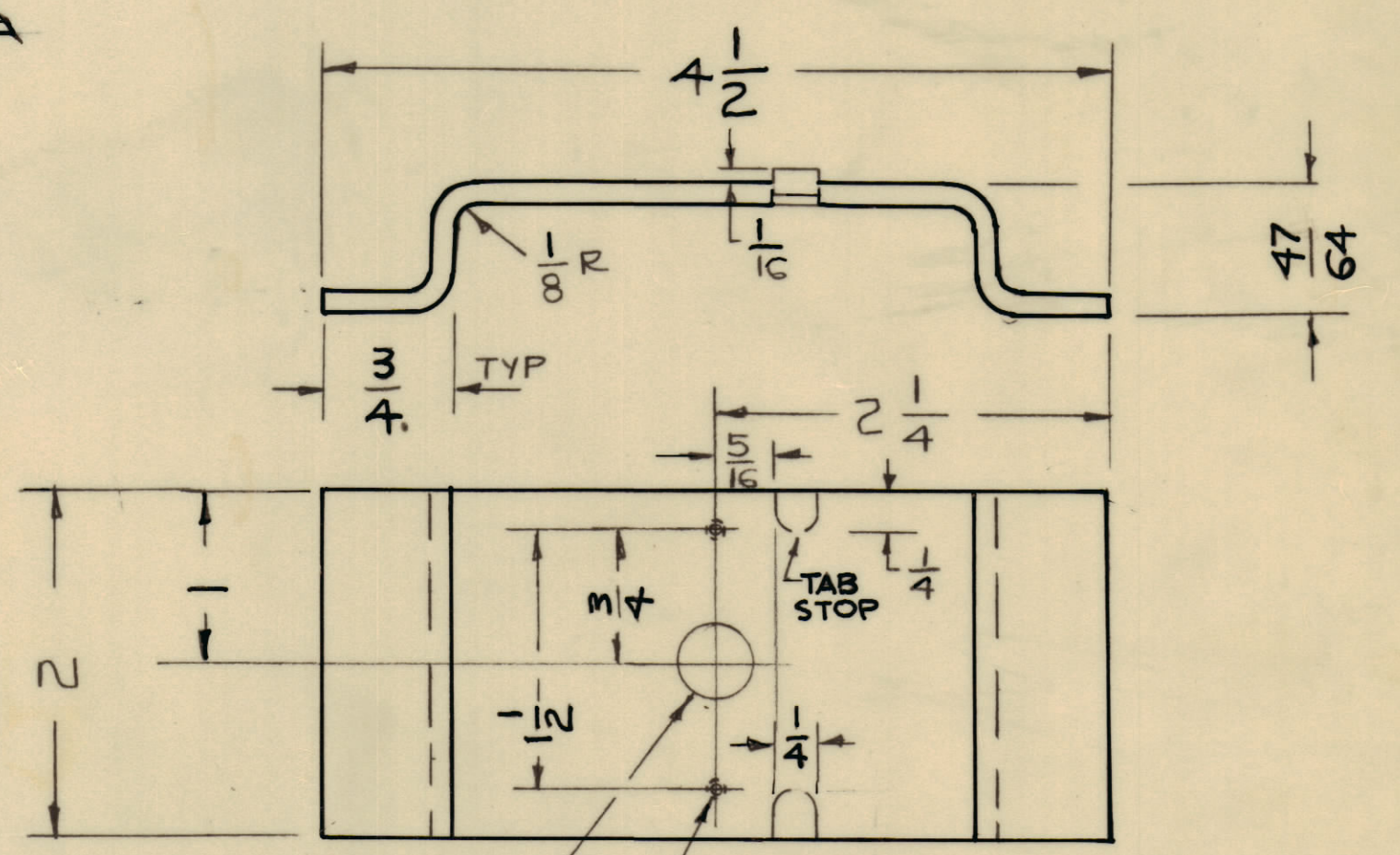
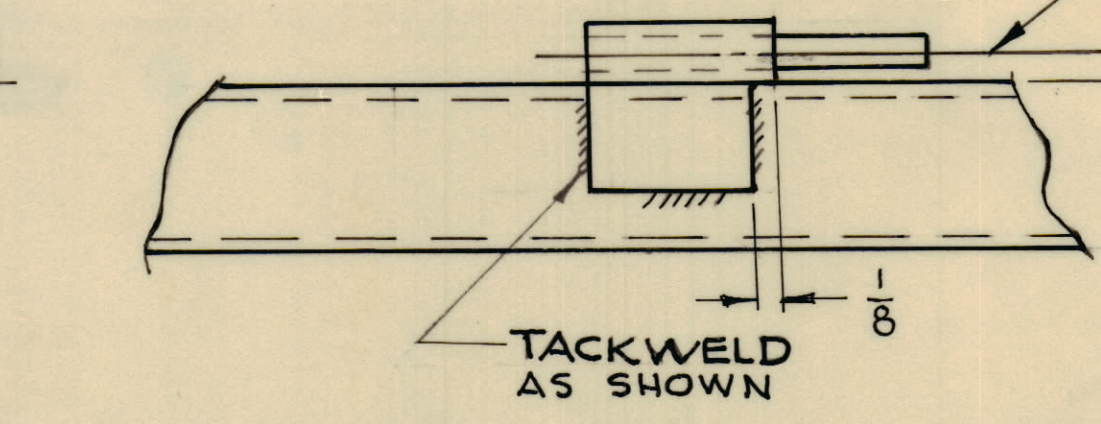
1. NO SPOTWELD MARKS TO BE VISIBLE ON THE OUTSIDE. OUTSIDE TO BE SANDED SMOOTH.
2. DOOR TO BE SQUARE AND FLAT WITHIN 1/32".
3. FINISH: 1) DEGREASE AND CLEAN. 2) APPLY PRIMER PER TMC SPEC S-520 PER TMC SPEC S-520 ON OUTSIDE & EDGES ONLY. INSIDE TO BE NON TEXTURED.
4. MASK HINGE PINS AND FILL WHERE NECESSARY.



STANLEY NH-802-2 1/2
MODIFIED MALE HINGE
RIGHT HAND, MARS METAL PROD. #1030

EDGE OF KNUCKLE TO 1/32
ABOVE TOP OF DOOR

HINGE PIN TO BE PARALLEL
TO EDGE OF DOOR WITHIN 1/64"



HOLE LEGEND

HOLE	DESCRIPTION	REQ'D
A	.203 DIA	2

TMC PART No	DESCRIPTION	RAK-21	RAK-22
MS-3099-1	LEFT SIDE (AS SHOWN)	1	1
MS-3099-2	RIGHT SIDE (OPP. HAND)		1

REQ'D	ITEM	PART NUMBER	DESCRIPTION	SYMBOL
2	3	RY-135-2	BUMPER, RUBBER	
1	2	PO-260	CAM, LOCK	
1	1	HA-114-1 OR EQUIV.	HANDLE, FLUSH TYPE	

MATERIAL: 16 GA. STEEL, SHEET

THE TECHNICAL MATERIEL CORP.
MAMARONECK, NEW YORK

Q'TY./UNIT	MODEL USED ON	ASSY. NO.	FINISH	TITLE
1	RAK-21	A-3125	SEE NOTE 4	DOOR, REAR

UNLESS OTHERWISE SPECIFIED
DIMENSIONS ARE IN INCHES AND INCLUDE
CHEMICALLY APPLIED OR PLATED FINISHES

DECIMALS: X ± .05, XX ± .01, XXX ± .005
FRACTIONS: ± 1/64, ANGLES: ± 0° 30'

THE CONTENTS OF THIS DRAWING ARE THE EXCLUSIVE PROPERTY
OF THE TECHNICAL MATERIEL CORP. ITS USE OR
REPRODUCTION IN WHOLE OR IN PART IS STR
LAW PROHIBITED.

DRAWN: JTB, DATE: 9/18/69, FINAL APPROVAL: JTB
CHECKED: JTB, DATE: 9/18/69
ELECT. DES. DATE: 9/18/69
MECH. DES. DATE: 9/18/69

MS-3099 A

NOTES