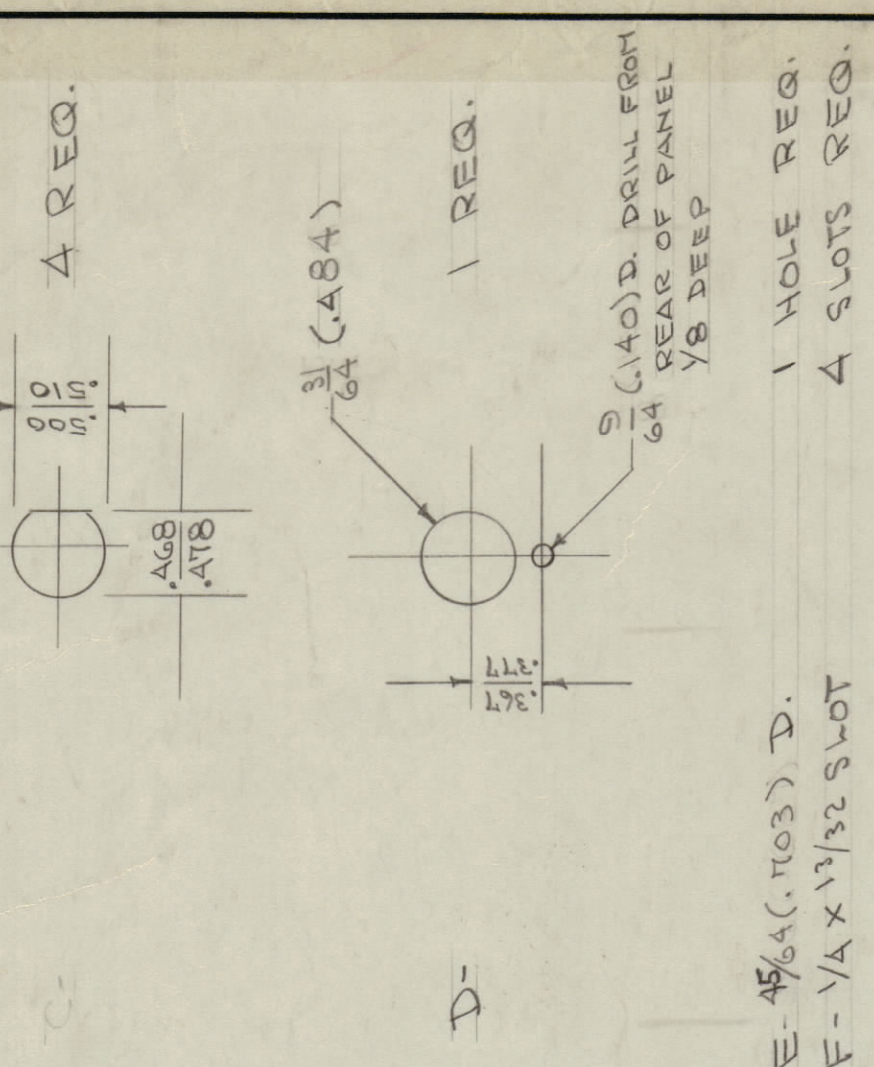
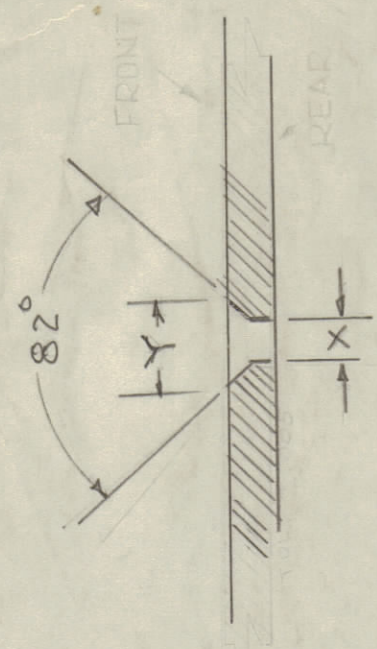


IF IT IS FOUND DESIRABLE TO CHANGE ANY TOLERANCE OR DIMENSION ON THIS DRAWING NOTIFY THE PURCHASER PROMPTLY.
MAXIMUM ALLOWABLE TOLERANCES HAVE BEEN DETERMINED AND DEVIATIONS WILL BE CAUSE FOR REJECTION. REMOVE ALL BURRS AND SHARP EDGES.

- A- NO. 47 (OTS) DRILL 4 HOLES REQ.
- B- DRILL & C'SINK FROM FRONT FOR 8-32 F.H.S.
- C- DRILL & C'SINK FROM REAR FOR 10-32 F.H.S.
- A- REQ.
- 1 REQ.
- 1 HOLE REQ.
- 4 SLOTS REQ.



DIM	#	F.H.S.	#	10F.H.S.
X	#18	(169)	#9	(196)
Y		.337		.390

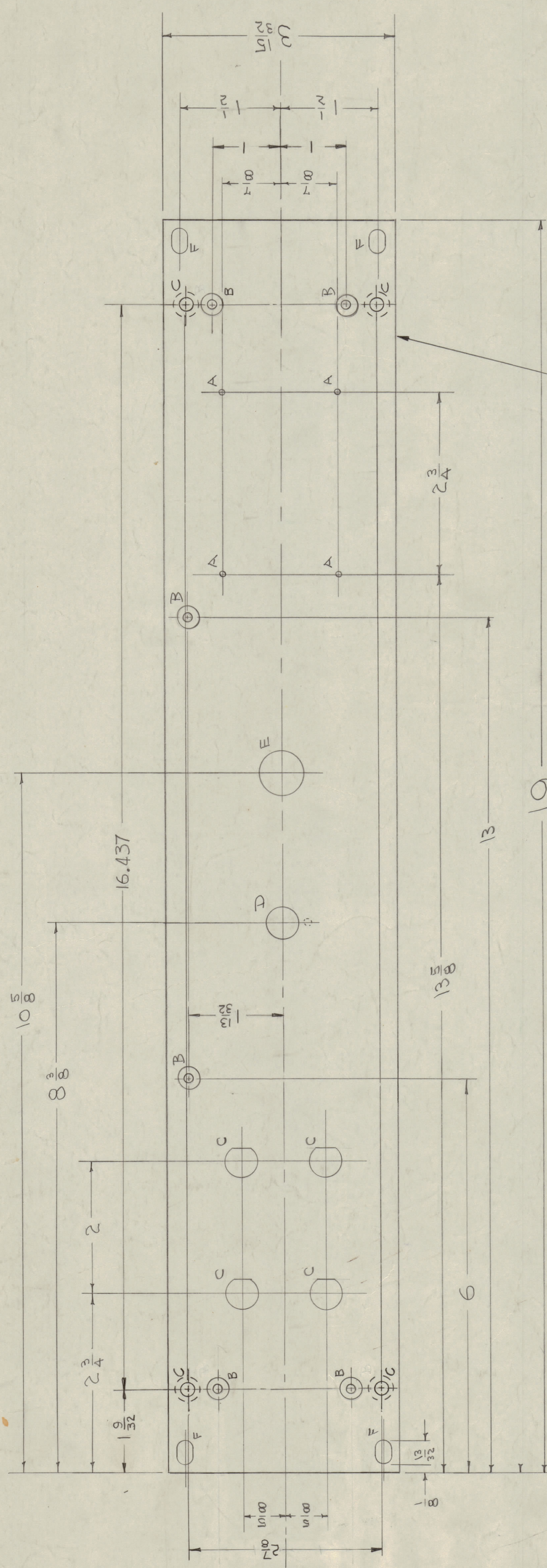


DRILLING DETAIL FOR "B" & "C" HOLES. DIMENSIONS APPLY AFTER PAINTING FOR "B" HOLES ONLY.

NOTE - FINISH
S-404 IRIDITE
S-114 ZINC CHROMATE PRIMER
S-115 T.M.C. SMOOTH GRAY ENAMEL
OR
PRIMER & PAINT TO CUSTOMER'S SPECIFICATION.
PAINT ONLY FRONT & EDGES OF PANEL

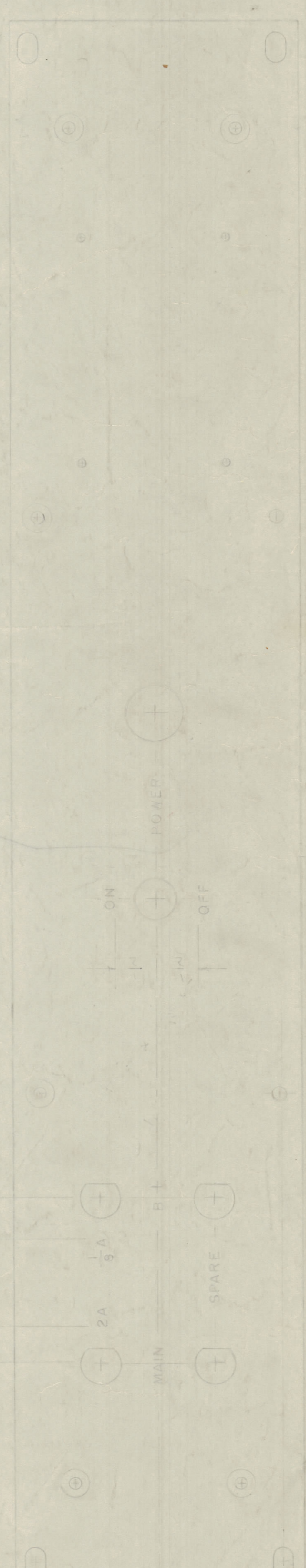
REF. LD-918

REQ. ITEM	PART NO.	DESCRIPTION	SYMBOL
316 THK. <td></td> <td>THE TECHNICAL MATERIEL CORP. MAMARONECK, NEW YORK</td> <td></td>		THE TECHNICAL MATERIEL CORP. MAMARONECK, NEW YORK	
ALUMINUM		PANEL, FRONT	
MATERIAL WEIGHT PART C		RSP	
TYPE & TEMPER			
HEAT TREAT SPEC.			
FINISH & SPEC. NO.			



FRONT OF PANEL SHOWN

METAL STAMP TMC PART NO. (MS-374-L)
1/8 HIGH GOTHIC ON REAR OF PANEL WITH
LATEST REVISION LETTER.



ENGRAVING DETAIL
LEFT SIDE TO FACE OF PANEL
UNLESS OTHERWISE SPECIFIED
DEPTH OF ENGRAVING .010
WIDTH OF ENGRAVING .005

NOTICE TO PERSONS RECEIVING THIS DRAWING
THE TECHNICAL MATERIEL CORPORATION claims
proprietary right in the material disclosed herein.
This drawing is loaned in confidence for engineering
information only and may not be copied or used
to manufacture anything shown herein without cer-
tification from THE TECHNICAL MATERIEL CORPORA-
TION to the user. This guarantee is loaned for mutual
assistance and is subject to recall at any time.

Property of:
THE TECHNICAL MATERIEL CORPORATION
MAMARONECK, NEW YORK

ISSUE ITEM	CHANGED FROM	DATE	CN. NO.	DRAWN	CHECKER	ENG. APP.
L	1 B-HOLE WAS FROM REAR	10/24/41	12581	JMB		
K	2 RSP-3 REF ADDED	2/02/50	2906	JMB		
J	4 C HOLES ADDED	2/02/50	2906	JMB		
I	ENGRAVING DET.	5/11/50	4780	HJA		
H	DELETED, ADD TO LD-918	5/11/50	4780	HJA		
G	S-404 IRIDITE WAS	5/11/50	4780	HJA		
F	1 S-101 CAUSTIC DIP	5/11/50	4780	HJA		
E	1 DETAIL FOR B HOLES	5/11/50	4780	HJA		
D	1 ENG. INFO. ADDED	5/11/50	4780	HJA		
C	1 E WAS 1/16	5/11/50	4780	HJA		
B	1 D WAS 1/8	5/11/50	4780	HJA		
A	1 C WAS 1/16	5/11/50	4780	HJA		