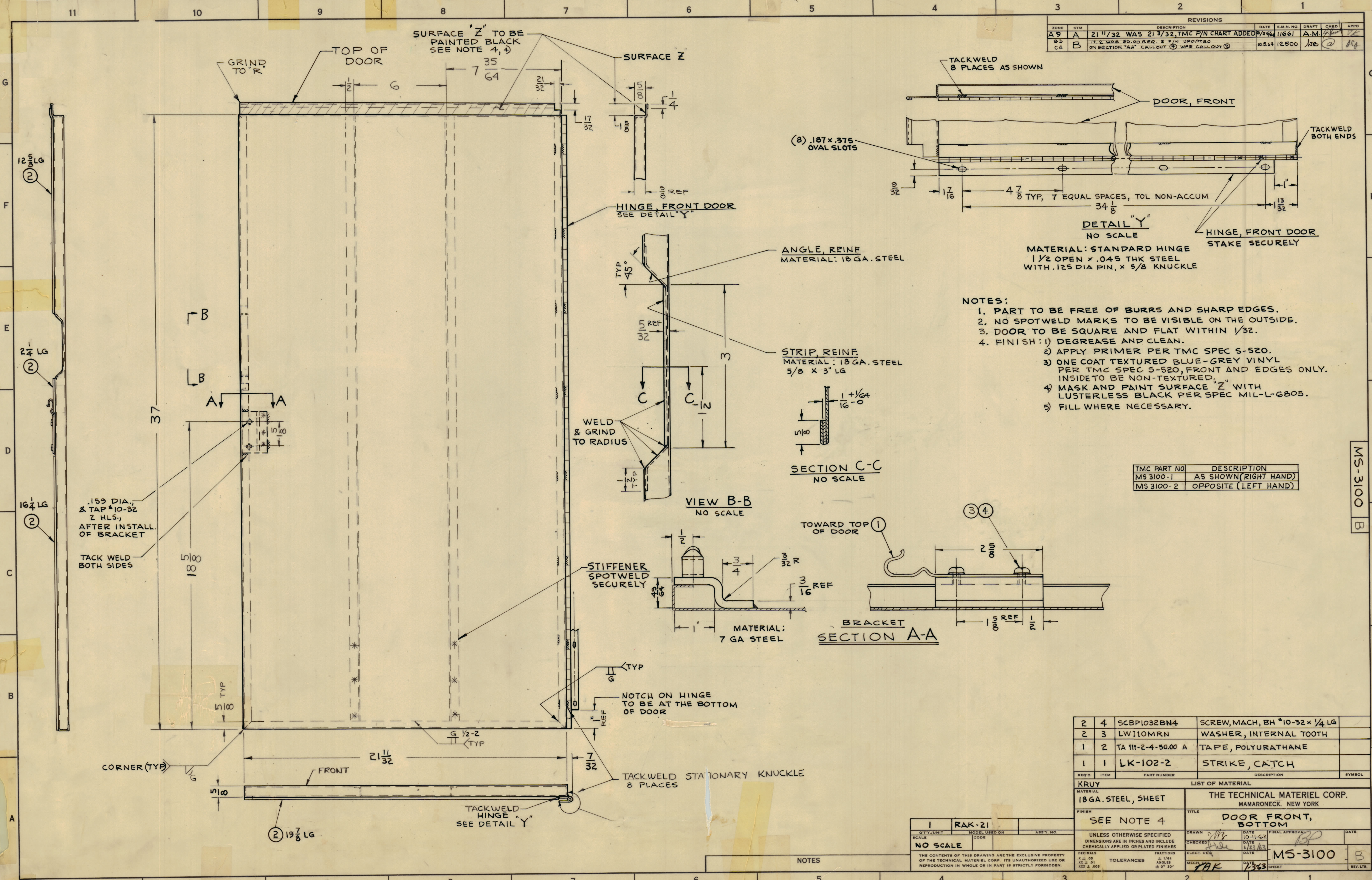


ZONE		SYM		DESCRIPTION		DATE	E.M.N. NO.	DRAFT	CHKD	APPD
A	9	A	21 11/32	WAS	21 3/32	TMC P/N CHART ADDED	10/25/62	11661	A.M.	
B	3	B				IT.2 WAS 50.00 REQ. E P/N UPDATED				
C	4	B				ON SECTION "AA" CALLOUT (1) WAS CALLOUT (2)	10.5.64	12.500		



- NOTES:**
- PART TO BE FREE OF BURRS AND SHARP EDGES.
 - NO SPOTWELD MARKS TO BE VISIBLE ON THE OUTSIDE.
 - DOOR TO BE SQUARE AND FLAT WITHIN 1/32.
 - FINISH: 1) DEGREASE AND CLEAN. 2) APPLY PRIMER PER TMC SPEC S-520. 3) ONE COAT TEXTURED BLUE-GREY VINYL PER TMC SPEC S-520, FRONT AND EDGES ONLY. INSIDE TO BE NON-TEXTURED. 4) MASK AND PAINT SURFACE "Z" WITH LUSTERLESS BLACK PER SPEC MIL-L-6805. 5) FILL WHERE NECESSARY.

TMC PART NO	DESCRIPTION
MS 3100-1	AS SHOWN (RIGHT HAND)
MS 3100-2	OPPOSITE (LEFT HAND)

QTY	UNIT	PART NUMBER	DESCRIPTION	SYMBOL
2	4	SCBP1032BN4	SCREW, MACH, BH #10-32 x 1/4 LG	
2	3	LW110MRN	WASHER, INTERNAL TOOTH	
1	2	TA 111-2-4-50.00 A	TAPE, POLYURATHANE	
1	1	LK-102-2	STRIKE, CATCH	

MATERIAL		THE TECHNICAL MATERIEL CORP. MAMARONECK, NEW YORK	
18 GA. STEEL, SHEET	SEE NOTE 4	DOOR FRONT, BOTTOM	
UNLESS OTHERWISE SPECIFIED DIMENSIONS ARE IN INCHES AND INCLUDE CHEMICALLY APPLIED OR PLATED FINISHES		DRAWN: JMK	DATE: 10-11-62
DECIMALS: .XX ± .005, .XXX ± .005		CHECKED: JMK	DATE: 1/23/63
FRACTIONS: 1/64 ± 1/64, 1/32 ± 1/32, 1/16 ± 1/16, 3/16 ± 1/16		ELECT. DES: JMK	DATE: 1/23/63
TOLERANCES: ± 1/64, ± 1/32, ± 1/16, ± 30°		MECH. DES: JMK	DATE: 1/23/63
THE CONTENTS OF THIS DRAWING ARE THE EXCLUSIVE PROPERTY OF THE TECHNICAL MATERIEL CORP. ITS UNAUTHORIZED USE OR REPRODUCTION IN WHOLE OR IN PART IS STRICTLY FORBIDDEN.		DATE: 1/23/63	

NO	SCALE	DATE	REV
1	NO SCALE		

NOTES

MS-3100 B