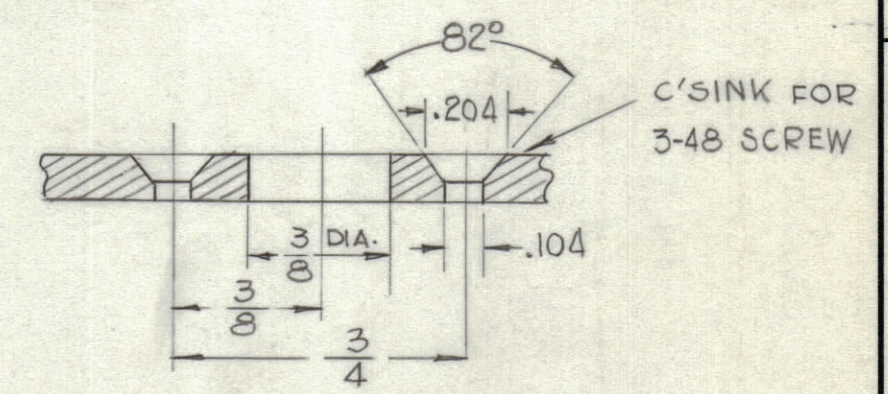
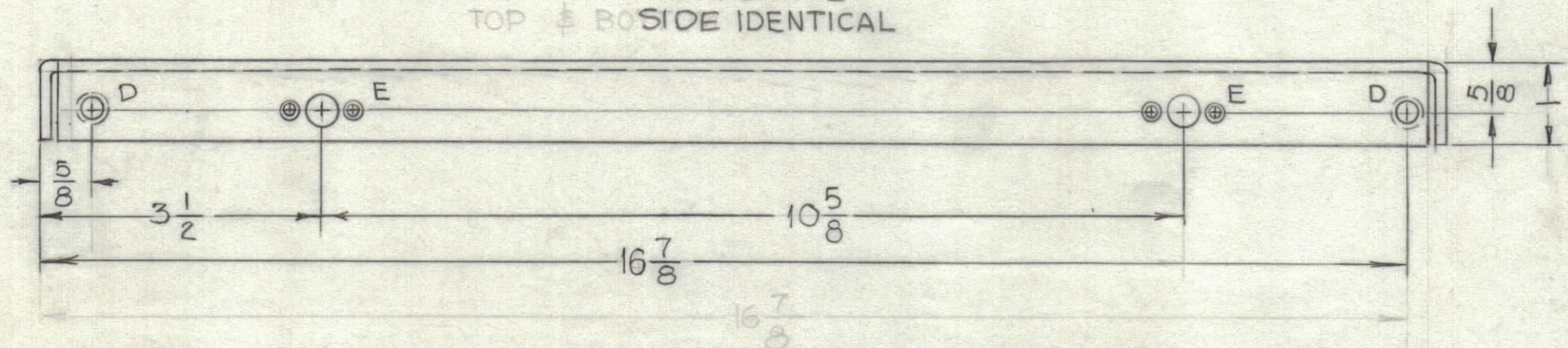


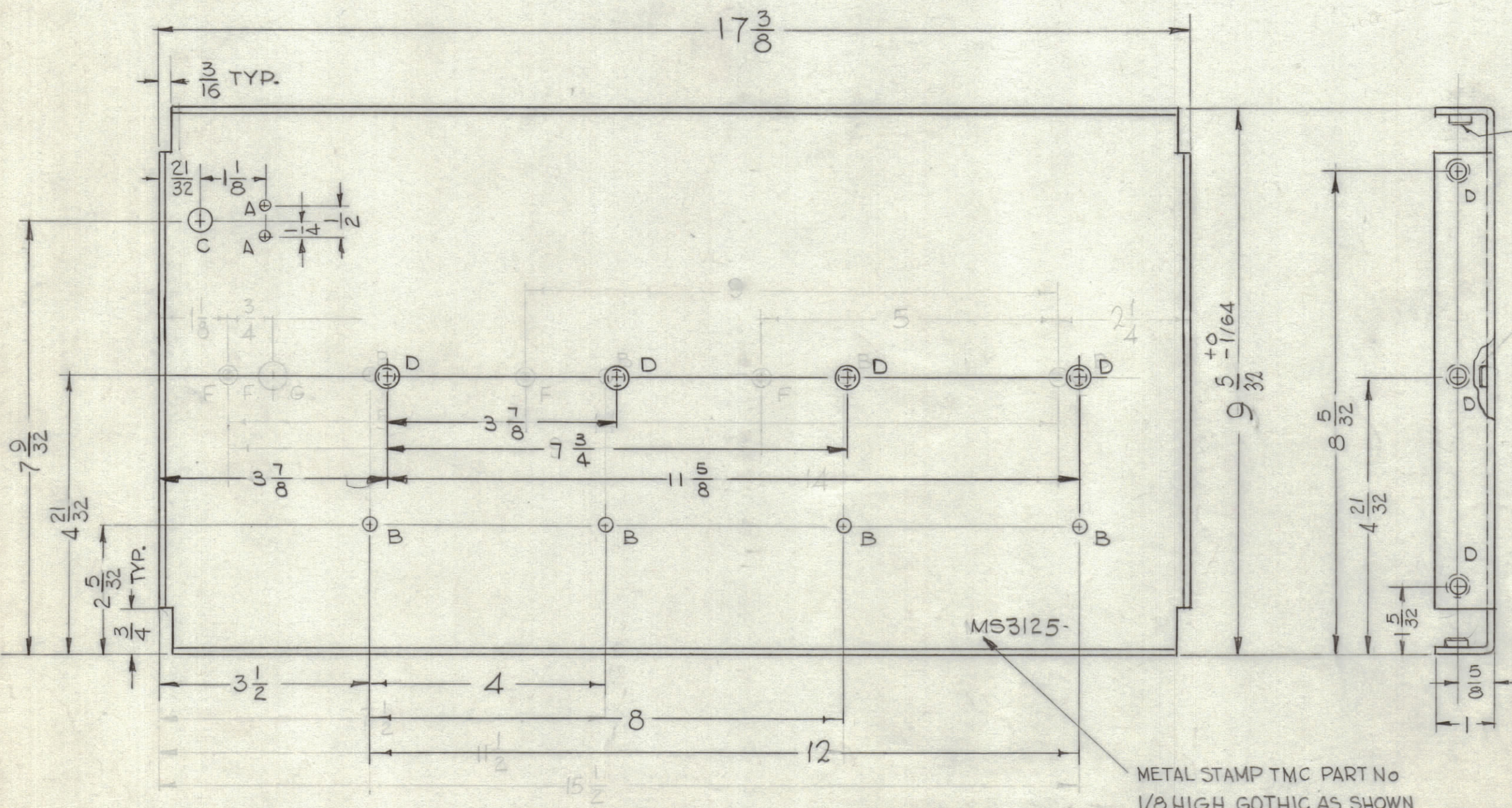
HOLE	DESCRIPTION	REQ'D.
A	11/64 DIA.	2
B	15/64 DIA.	4
C	3/8 DIA.	1
D	.253 - .250 DIA.	14
E	SEE DETAIL "E"	4
F	.221 - .224 DIA.	4
G	1/2 DIA.	1

REVISIONS						
ZONE	SYM	DESCRIPTION	DATE	E.M.N. NO.	DRAFT	CHKD
	X	EXP. RELEASE	4/1/63		GDL	
	X1	COMPLETELY REVISED	2/9/65		JL	
	X2	14 1/8 DIM DELETED, 10 5/8 DIM ADDED	11/22/65		Jc	
	Ø	ORIGINAL RELEASE	11/29/65			Jc

OPPOSITE TOP & BOTTOM SIDE IDENTICAL



DETAIL "E"
(2 Req)



1 MOUNT IN ALL "D" HOLES ITEM (1) AS SHOWN AFTER FINISHING

OPPOSITE BOTH SSIDE IDENTICAL

METAL STAMP TMC PART No 1/8 HIGH, GOTHIC AS SHOWN WITH LATEST REVISION LETTER.

UNLESS OTHERWISE SPECIFIED - MOUNT INSERTS AFTER FINISHING USE MATERIAL THICKNESS FOR MAX. RADIUS ON ALL BENDS UNLESS OTHERWISE SPECIFIED ALL ANGULAR BENDS 90°

NOTES

1	VLLA-10K1F	
QTY./UNIT	MODEL USED ON	ASS'Y. NO.
SCALE 1/2	CODE A	
THE CONTENTS OF THIS DRAWING ARE THE EXCLUSIVE PROPERTY OF THE TECHNICAL MATERIEL CORP. ITS UNAUTHORIZED USE OR REPRODUCTION IN WHOLE OR IN PART IS STRICTLY FORBIDDEN.		

4	2	NT-129-892-6	NUT, ROUND, SWAGE TYPE	F
14	1	NT-129-1032-6	NUT, ROUND, SWAGE TYPE	D
REQ'D.	ITEM	PART NUMBER	DESCRIPTION	SYMBOL
O. POSE LIST OF MATERIAL				
MATERIAL 1/8 THK. ALUMINUM 5052 - H32			THE TECHNICAL MATERIEL CORP. MAMARONECK, NEW YORK	
FINISH 3404 YEL. IRIDITE			TITLE PLATE, SIDE, LEFT IPA DRIVER DRAWER	
UNLESS OTHERWISE SPECIFIED DIMENSIONS ARE IN INCHES AND INCLUDE CHEMICALLY APPLIED OR PLATED FINISHES		DECIMALS .X ± .05 .XX ± .01 .XXX ± .005	FRACTIONS ± 1/64 ANGLES ± 0° 30'	TOLERANCES
DRAWN G.D.L.	DATE 4-1-63	FINAL APPROVAL	DATE 11/29/65	
CHECKED JCB	DATE 6-24-65			
ELECT. DES.	DATE	MS3125		
MECH. DES.	DATE	SHEET		REV. LTR.

MS3125