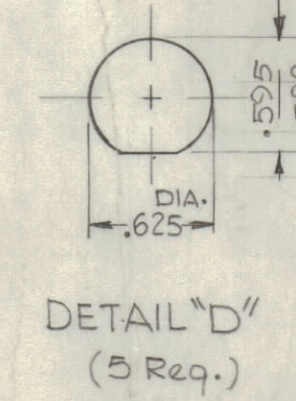
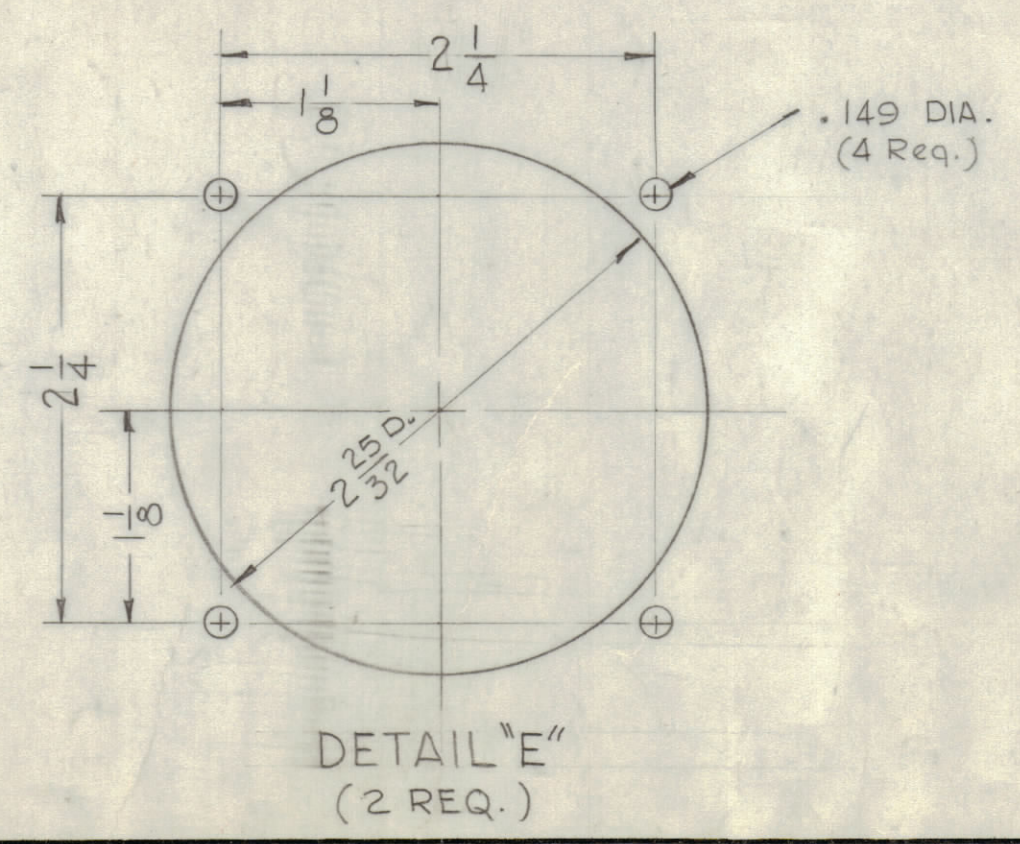


FRONT VIEW SHOWN

MS3134 - METAL STAMP TMC PART NO. 1/8 HIGH GOTHIC ON REAR OF PANEL WITH LATEST REVISION LETTER.

MACHINING:
 1. MILL ALL EDGES.
 2. HOLES MUST BE DRILLED, UNLESS OTHERWISE SPECIFIED.
 3. LATERAL BOW OF PANEL MUST BE KEPT TO .031 TOLERANCE.
 4. PANEL MUST BE FREE OF ALL MACHINING MARKS, GOUGES AND SCRATCHES. IF NECESSARY, SAND FRONT OF PANEL WITH NO. 120 GRIT SANDPAPER.



* NOTE ORIENTATION OF FLAT

HOLE	DESCRIPTION	REQ'D
A	15/64 DIA.	24
B	3/8 DIA.	6
C	NO. 48 DRILL	4
D	SEE DETAIL "D"	5
E	SEE DETAIL "E"	2
F	1/8 DIA. X 1/8 DEEP FROM REAR	2
G	DR. 1/16 DIA. C-SINK .02" TO .390 DIA FROM REAR OF PANEL	1

— FINISH NOTE —
 S404 YELLOW IRIDITE
 S114 ZINC CHROMATE PRIMER
 S115 TMC SMOOTH GREY ENAMEL } ON FRONT & EDGES ONLY

REF: LD-1198

ZONE	SYM	DESCRIPTION	DATE	E.M.N. No	DRAFT	CHKD	APPD
		ORIGINAL RELEASE FOR PRODUCTION	11-65		JVL		
	X2	G HOLE ADDED, D HOLE ORIENTED	11-11-65	X2	JVL		
	X1	2 B HOLES ADDED, 2 F HOLES ADDED	1-21-65	X1	SEC		

QTY/UNIT	MODEL USED ON	ASSY. NO.
1	GPT-10KLF	

REQ'D	ITEM	PART NUMBER	DESCRIPTION	SYMBOL
	O. POSE		LIST OF MATERIAL	
	MATERIAL	3/16 THK. ALUMINUM 2024 - T3	THE TECHNICAL MATERIEL CORP. MAMARONECK, NEW YORK	
	FINISH	SEE NOTE	TITLE	
			FRONT PANEL	

NOTES

UNLESS OTHERWISE SPECIFIED DIMENSIONS ARE IN INCHES AND INCLUDE CHEMICALLY APPLIED OR PLATED FINISHES	DRAWN	DATE	FINAL APPROVAL	DATE
DECIMALS ± .05 XX ± .01 XXX ± .005	G.D.L.	3-28-65	[Signature]	11/24/65
FRACTIONS ± 1/64 ANGLES ± 0° 30'	CHECKED	1-24-65		
	ELECT. DES. I.			
	MECH. DES. I.			