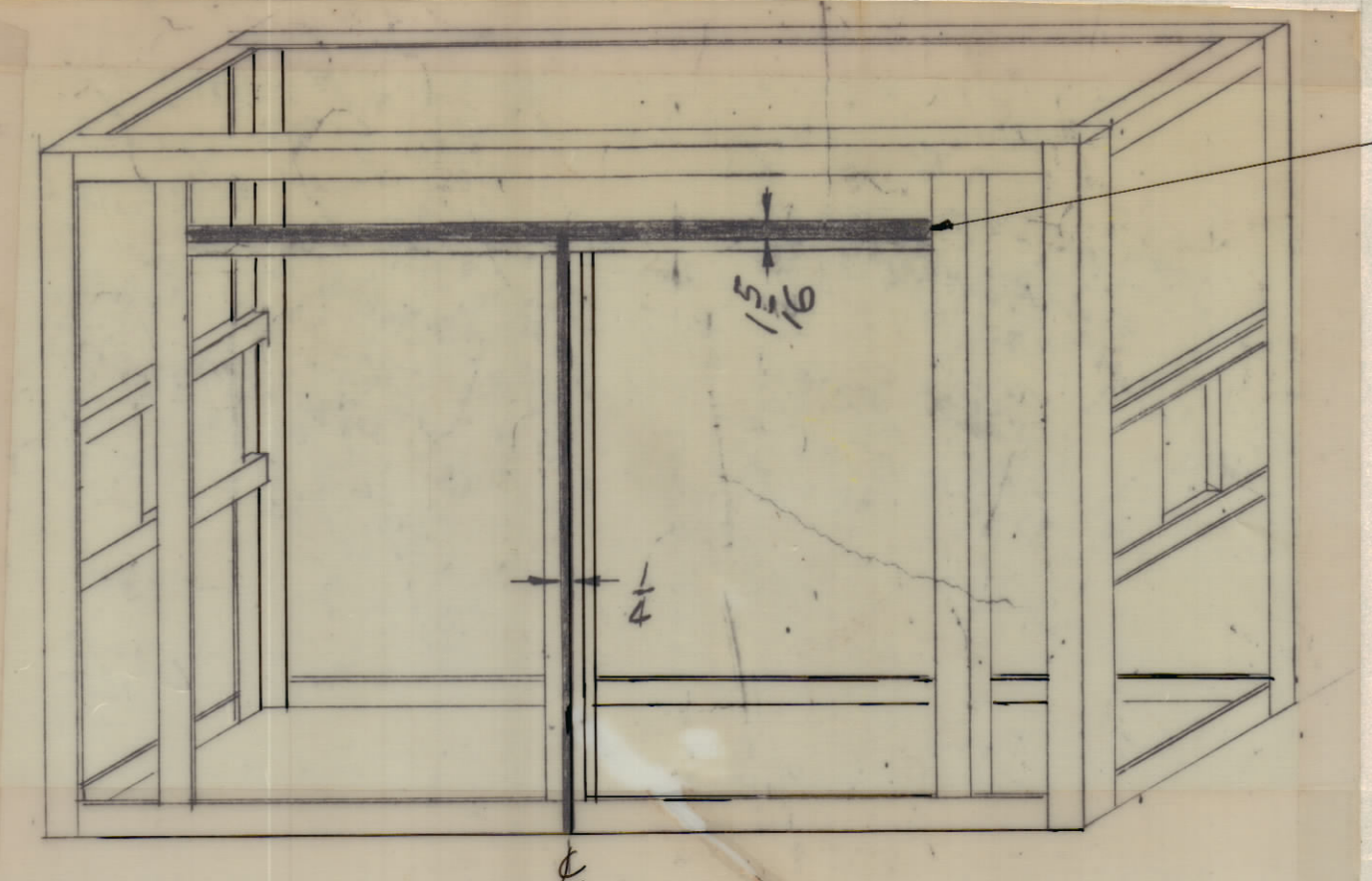
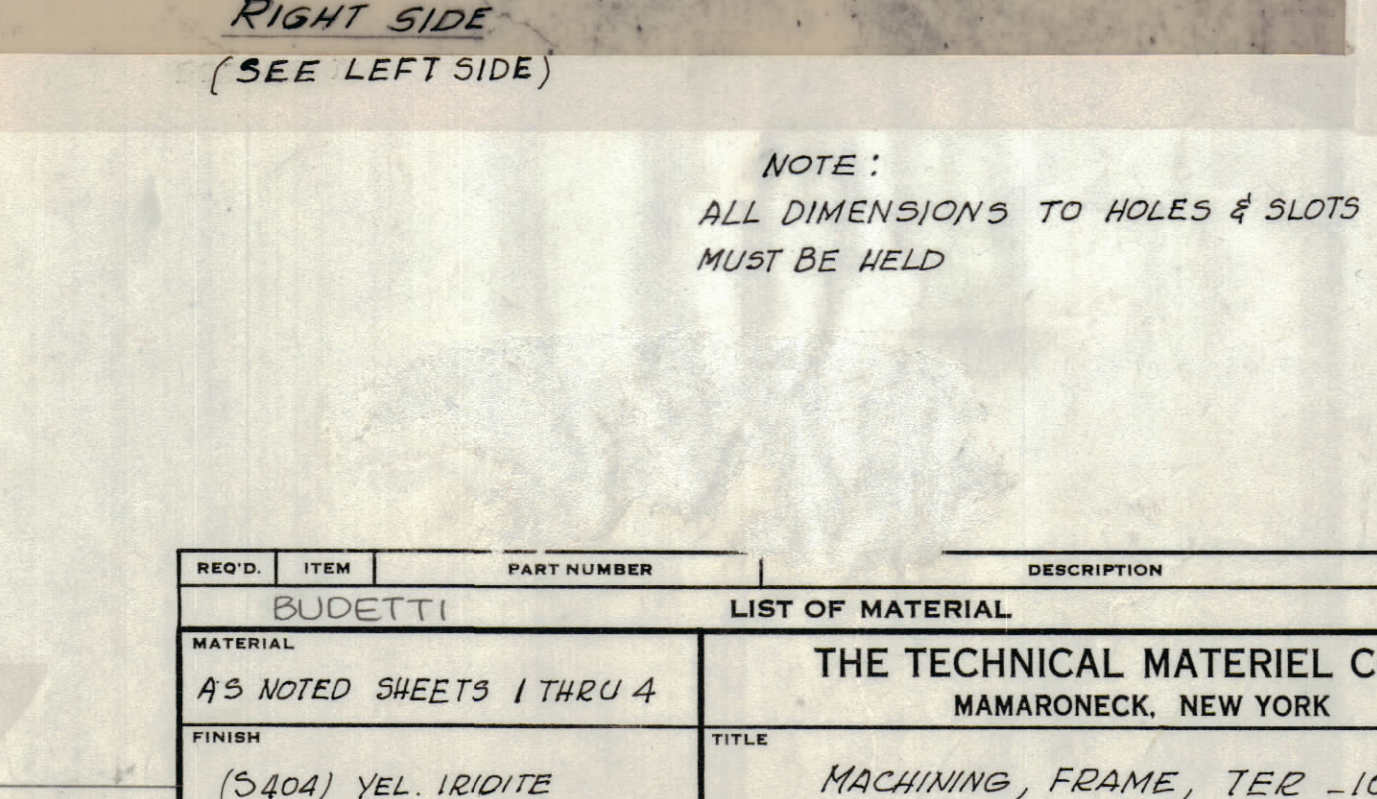
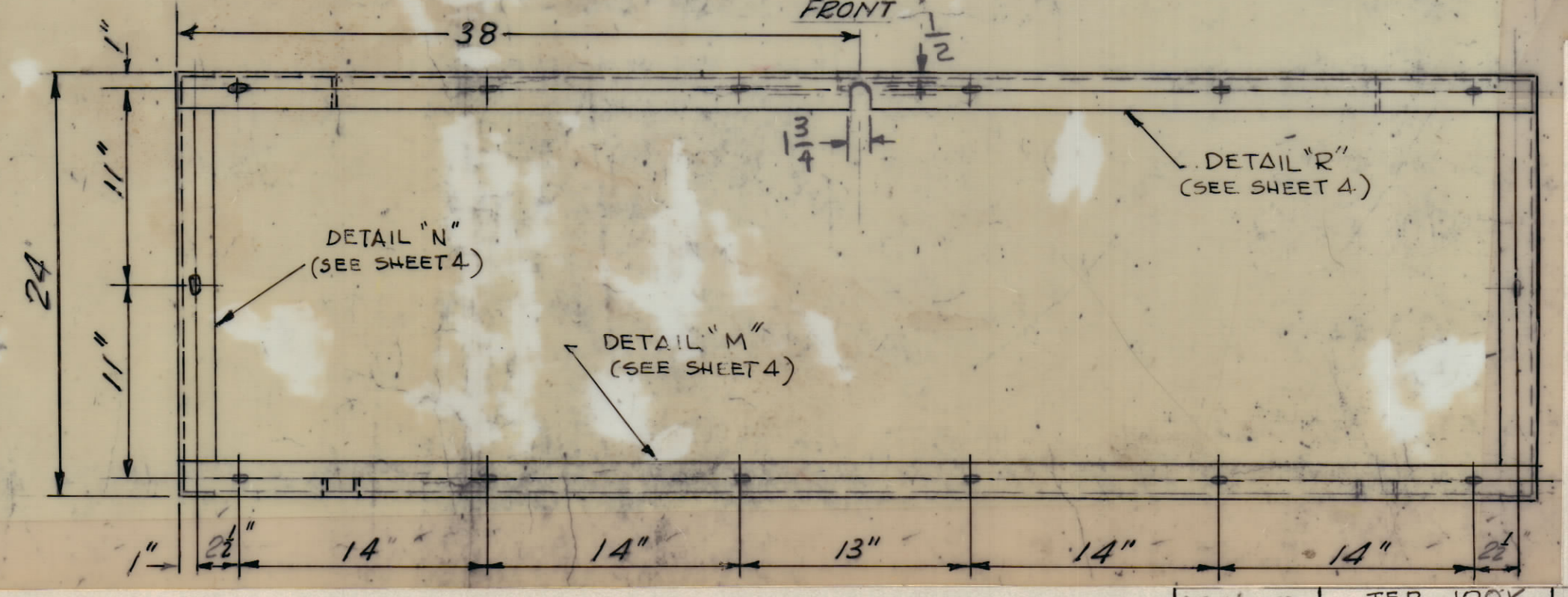
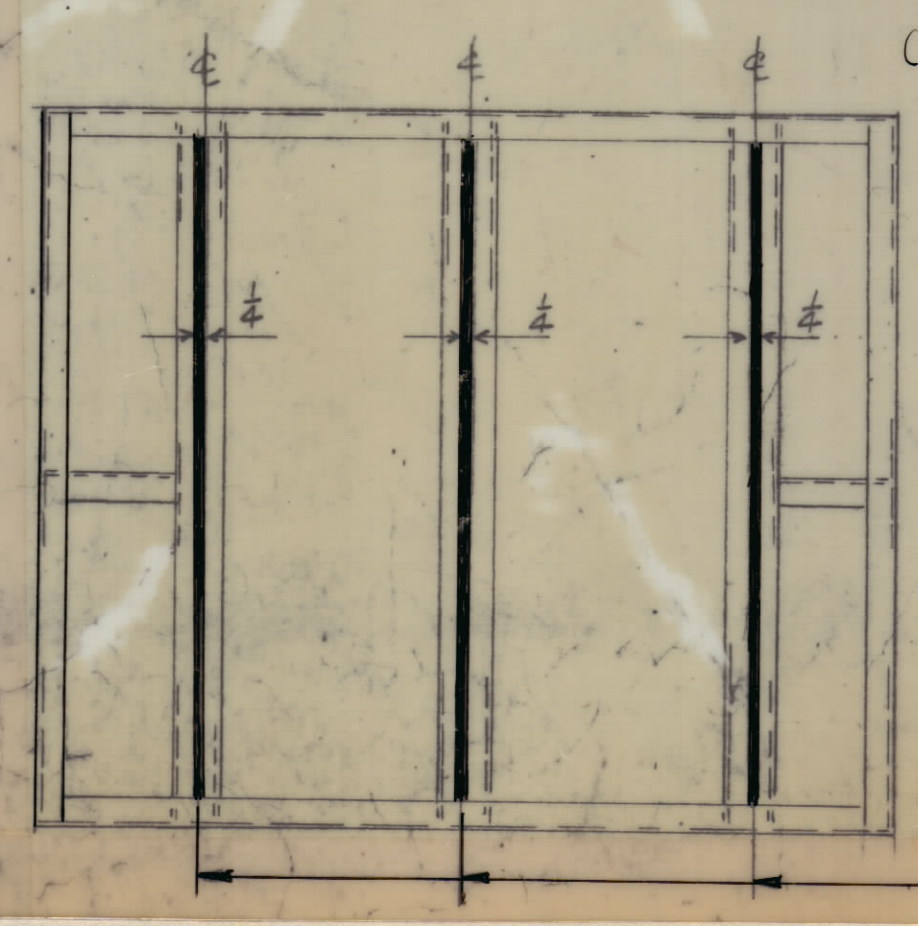
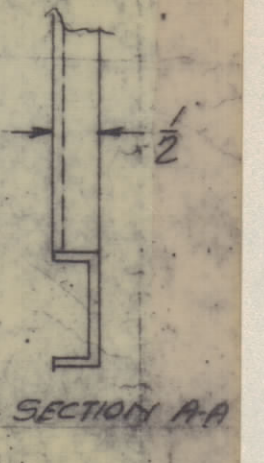
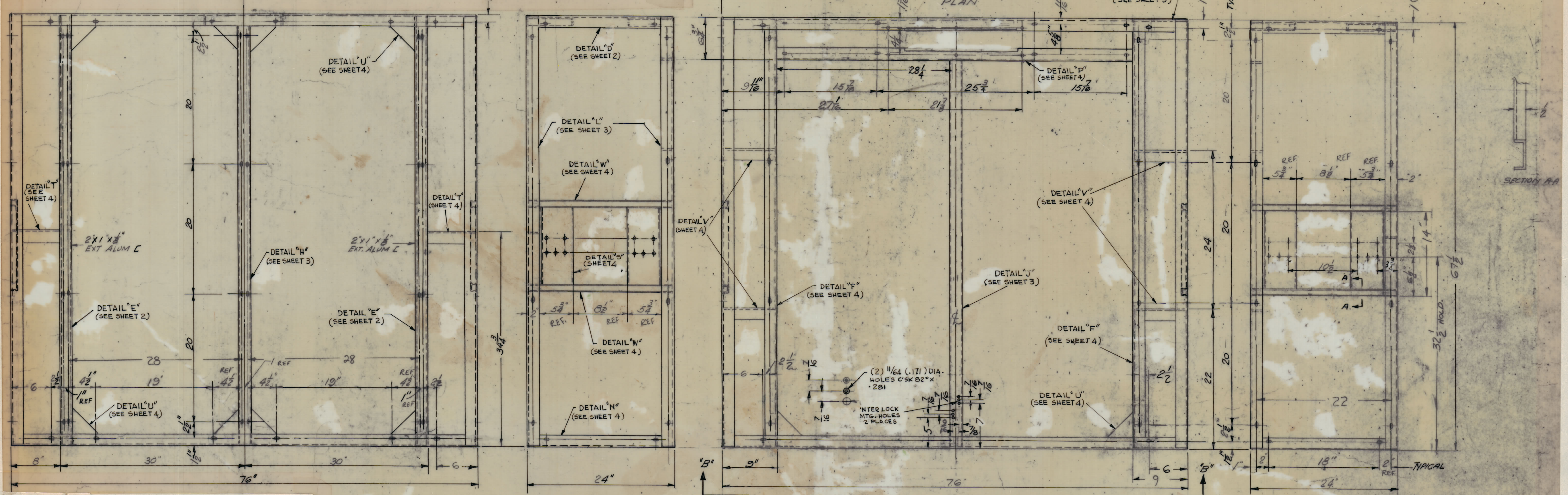
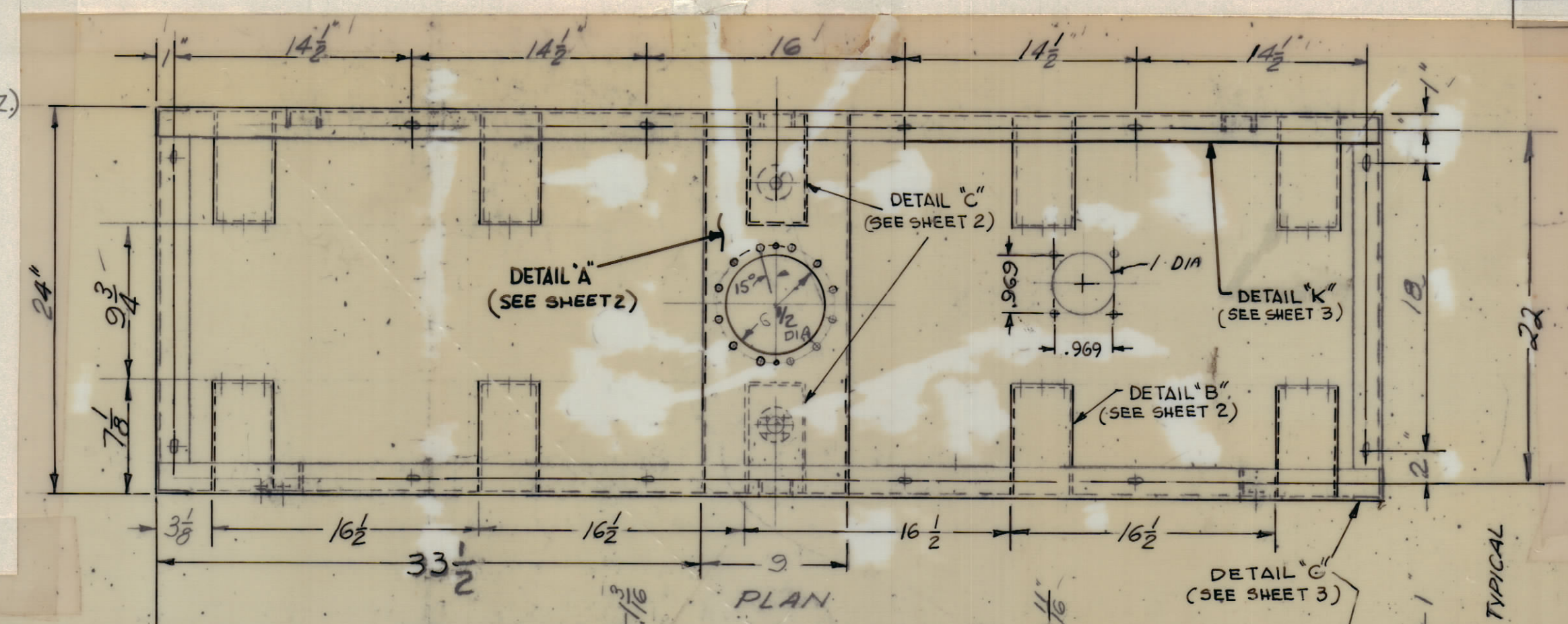


| ZONE | | SYM | DESCRIPTION | REVISIONS | | | | |
|------|------------|-----|---------------------------------|-----------|------|------|--|--|
| DATE | E.M.N. NO. | | | DRAFT | CHKD | APPD | | |
| X2 | | | SHEET 2, 3, 4 ADDED | 10-7-61 | | | | |
| Ø | | | ORIGINAL RELEASE FOR PRODUCTION | 12/1/65 | | | | |



BLUE TEXTURED TO BE APPLIED AS SHOWN.
1/4" WIDE STRIP (RUNNING VERT.)
1-5/16" WIDE STRIP (RUNNING HORIZ.)



- UNLESS OTHERWISE SPECIFIED
1. X CONSTRUCTION 2 X 1 X 1/8 THICK ALUM. EXTRUDED, 6063-T5
 2. MOUNT ALL INSERTS AFTER FINISHING.
 3. ALL WELD JOINTS TO BE VEE'D OUT PRIOR TO WELDING.
 4. WELDING TO BE PER MIL-T-5021C, TUNGSTEN INERT GAS PROCESS.
 5. ALL JOINTS SHOULD BE WELDED INSIDE AND OUTSIDE.
 6. ALL OUTSIDE WELDS TO BE GROUND FLUSH
 7. OUTSIDE SURFACES TO BE REASONABLY FREE OF SCRATCHES AND TOOL MARKS AND HAVE A SURFACE ROUGHNESS NOT TO EXCEED .25

PAINT 1/4" STRIP AT REAR AS SHOWN

NOTE:
ALL DIMENSIONS TO HOLES & SLOTS MUST BE HELD

| REQ'D. | ITEM | PART NUMBER | DESCRIPTION | SYMBOL |
|--------------------------|------|-------------|------------------------------|--------|
| BUDETTI LIST OF MATERIAL | | | | |
| MATERIAL | | | THE TECHNICAL MATERIEL CORP. | |
| AS NOTED SHEETS 1 THRU 4 | | | MAMARONECK, NEW YORK | |
| FINISH | | | TITLE | |
| (S404) YEL. IRIDITE | | | MACHINING, FRAME, TER-100K | |

| AS NOTED | TER-100K | ASSY. NO. |
|---|------------|-----------------|
| SCALE | CODE | |
| DO NOT SCALE | S401-189 | |
| THE CONTENTS OF THIS DRAWING ARE THE EXCLUSIVE PROPERTY OF THE TECHNICAL MATERIEL CORP. ITS UNAUTHORIZED USE OR REPRODUCTION IN WHOLE OR IN PART IS STRICTLY FORBIDDEN. | | |
| DECIMALS | TOLERANCES | FRACTIONS |
| X ± .05 | | ± 1/64 |
| XX ± .01 | | ANGLES ± 0° 30' |
| XXX ± .005 | | |

| DRAWN | DATE | FINAL APPROVAL | DATE |
|-------------|---------|----------------|---------|
| G.D.L. | 7-265 | | |
| CHECKED | DATE | | |
| | 10/3/65 | | 12/1/65 |
| ELECT. DES. | DATE | | |
| | | | |
| MECH. DES. | DATE | | |
| | | | |

NOTES

MS 3140